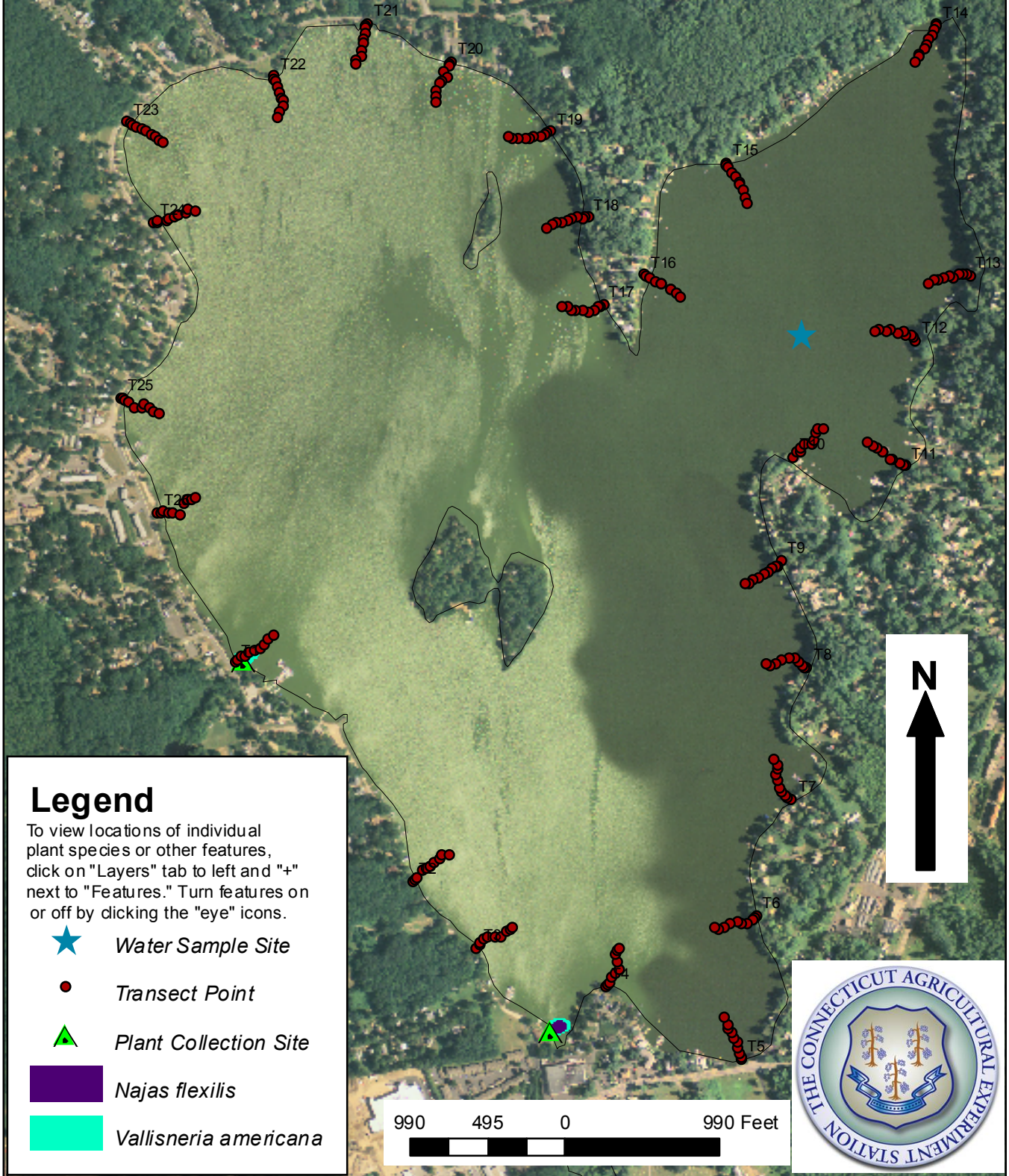







Lake Pocotopaug, East Hampton 511 Acres

Invasive Aquatic Plant Program
Survey August 14, 2006
David Bridgewater and Emily Pysh



Legend

To view locations of individual plant species or other features, click on "Layers" tab to left and "+" next to "Features." Turn features on or off by clicking the "eye" icons.

-  Water Sample Site
-  Transect Point
-  Plant Collection Site
-  *Najas flexilis*
-  *Vallisneria americana*

990 495 0 990 Feet

