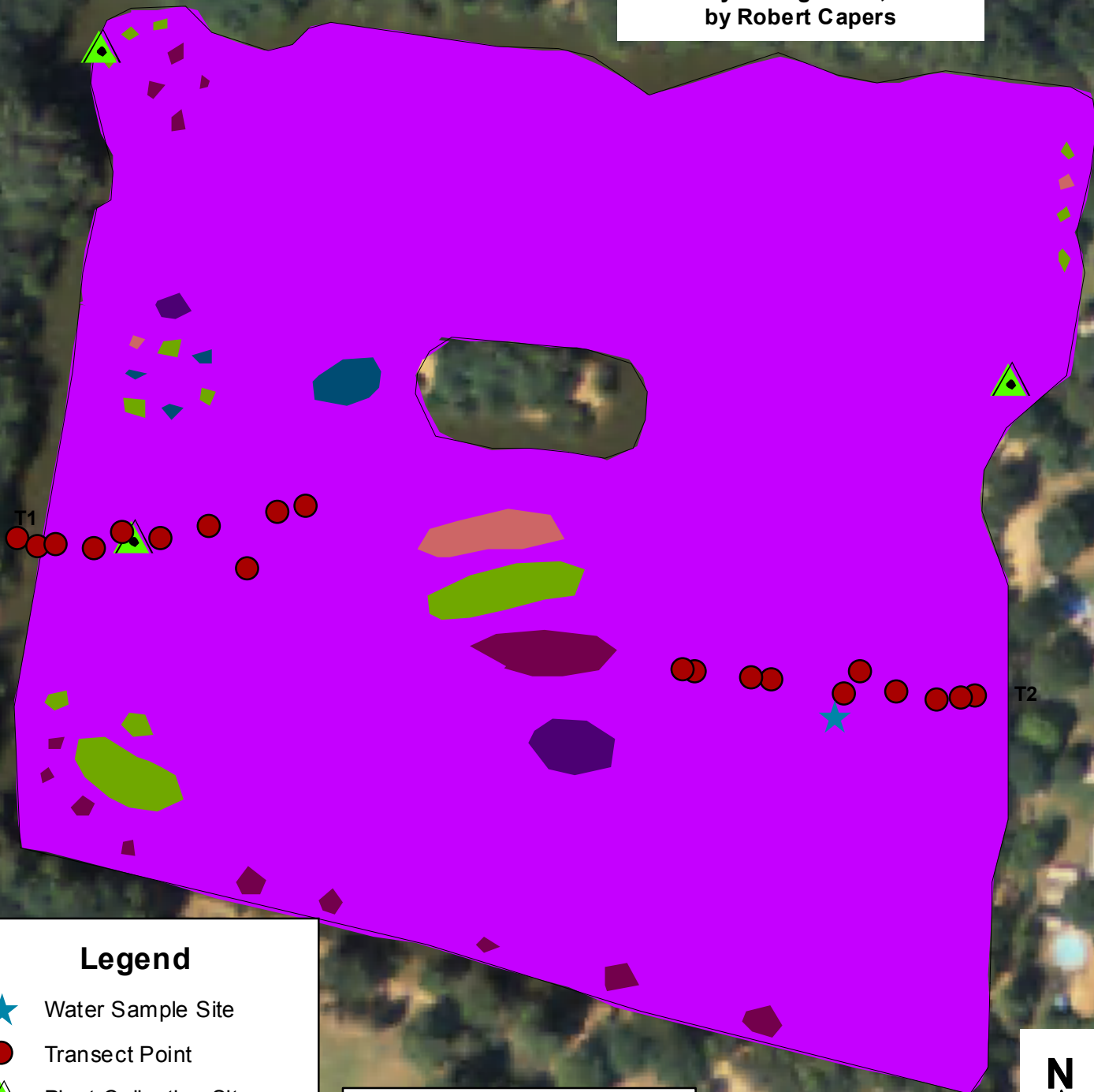


Paderewski Park Pond, Plainville

15.8 Acres

Invasive Aquatic Plant Program
Surveyed August 24, 2005
by Robert Capers



Legend

- ★ Water Sample Site
- Transect Point
- ▲ Plant Collection Site
- *Myriophyllum spicatum**
- *Potamogeton amplifolius*
- *Potamogeton foliosus*
- *Najas minor*
- *Najas flexilis*
- *Elodea nuttallii* *Invasive

To view locations of individual plant species or other features, click on "Layers" tab to left and "+" next to "Features." Turn features on or off by clicking the "eye" icons.

