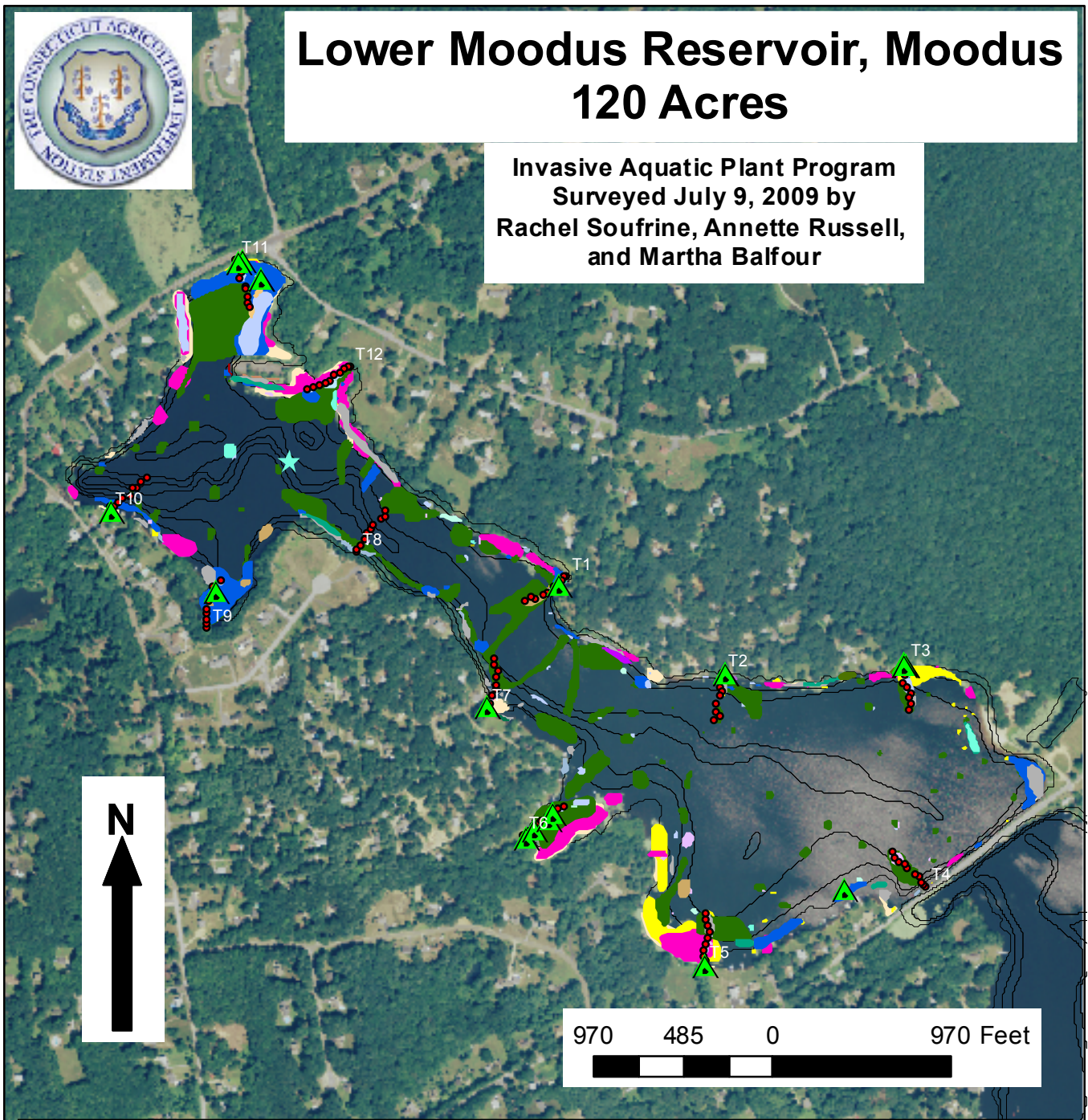




Lower Moodus Reservoir, Moodus 120 Acres

Invasive Aquatic Plant Program
Surveyed July 9, 2009 by
Rachel Soufrine, Annette Russell,
and Martha Balfour



Legend

To view locations of individual plant species or other features, click on "Layers" tab to left and "+" next to "Layers File". Turn features on or off by clicking the "Eye" icons.

- | | | | |
|--------------------------------|-------------------------------|--------------------------------|--------------------------------------|
| Collection Point | <i>Ceratophyllum demersum</i> | <i>Potamogeton bicupulatus</i> | <i>Utricularia purpurea</i> |
| Transect Point | <i>Potamogeton crispus</i> ** | <i>Elodea nuttallii</i> | <i>Myriophyllum heterophyllum</i> ** |
| Water Data | <i>Potamogeton pulcher</i> | <i>Eleocharis sp.</i> | <i>Cabomba caroliniana</i> ** |
| <i>Vallisneria americana</i> | <i>Stuckenia pectinata</i> | <i>Utricularia vulgaris</i> | <i>Nymphaea odorata</i> |
| <i>Callitriche sp.</i> | <i>Eriocaulon aquaticum</i> | <i>Gratida aurea</i> | <i>Nuphar variegata</i> |
| <i>Myriophyllum humile</i> | <i>Elatine sp.</i> | <i>Utricularia gibba</i> | <i>Brasenia schreberi</i> |
| <i>Sparganium sp.</i> | <i>Potamogeton epihydrus</i> | <i>Utricularia radiata</i> | |
| <i>Ceratophyllum echinatum</i> | <i>Pontederia cordata</i> | <i>Potamogeton pusillus</i> | ** Invasive |