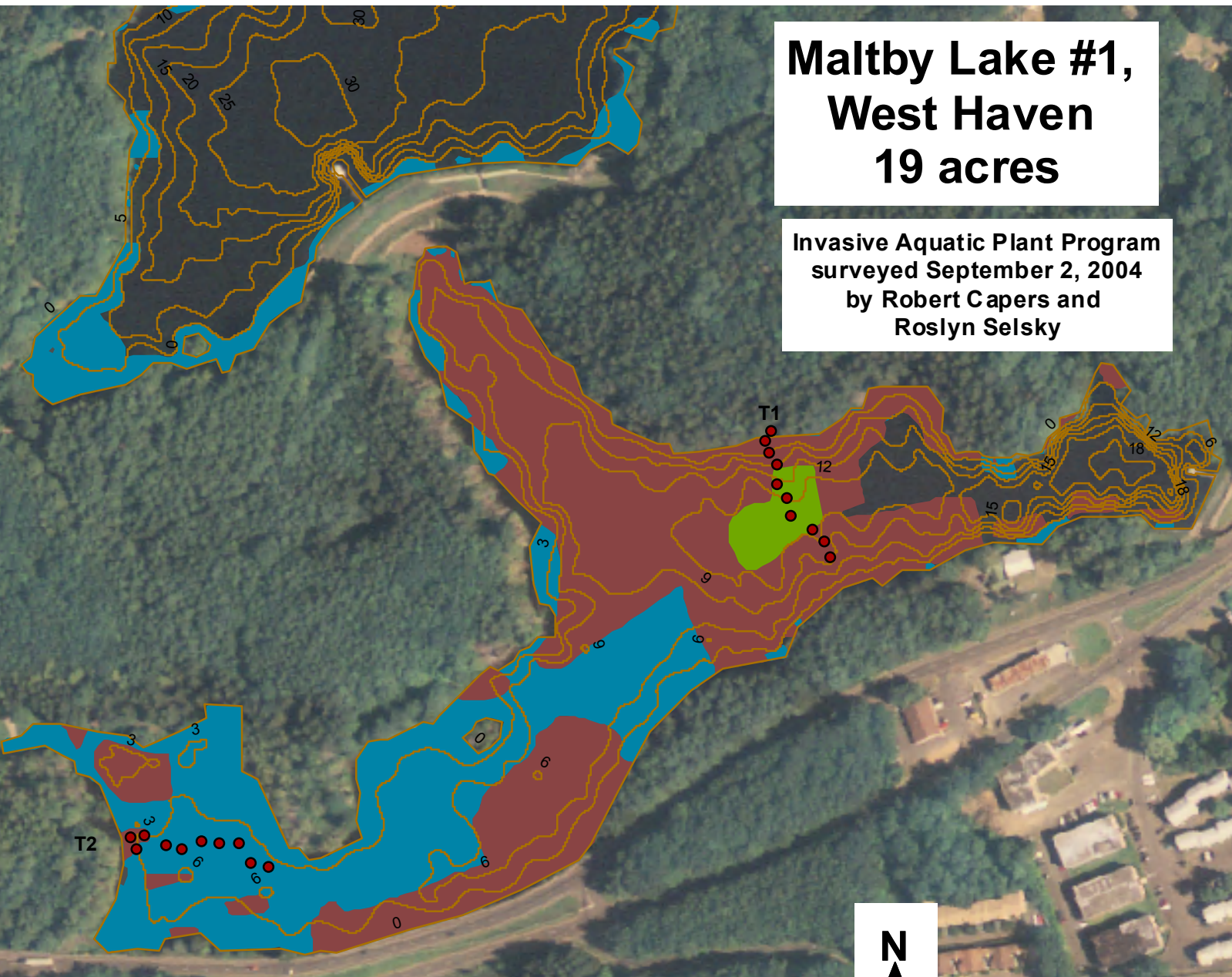








Maltby Lake #1, West Haven 19 acres

Invasive Aquatic Plant Program
surveyed September 2, 2004
by Robert Capers and
Roslyn Selsky



Legend

To view locations of individual plant species or other features, click on "Layers" tab to left. Turn features on or off by clicking the "Eye" icons.

-  *Transect Point*
-  *Bathymetry*
-  *Eleocharis acicularis*
-  *Potamogeton foliosus*
-  *Najas gracillima*
-  *Potamogeton gramineus*

