

# Gorton Pond East Lyme

52 acres

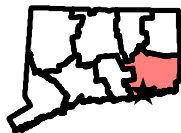
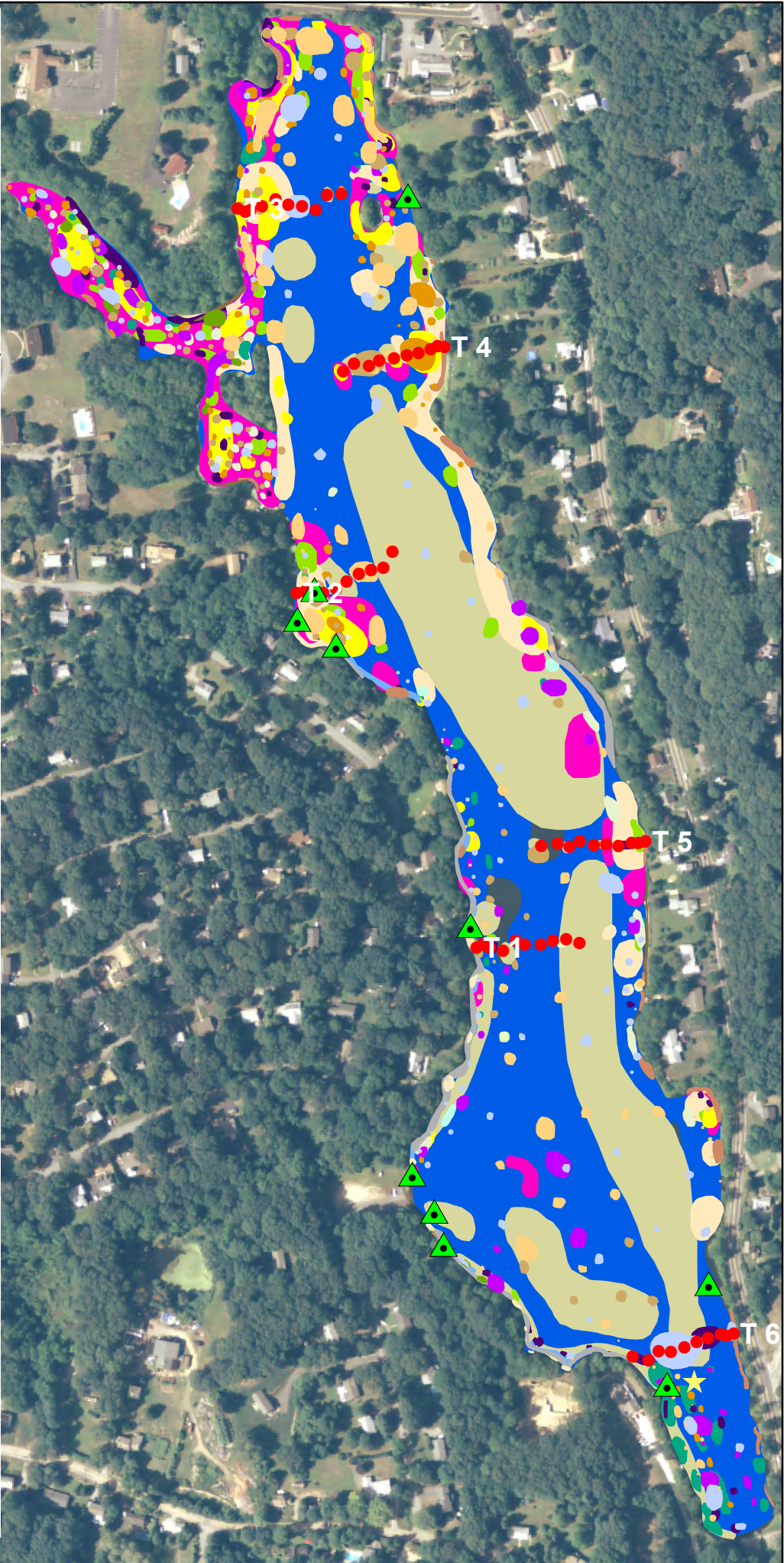
Invasive Aquatic Plant Program  
Surveyed July 8-9, 2015

by Greg Bugbee, Jennifer Fanzutti,  
Jesse Schock, and Summer Stebbins

## Legend

To view locations of individual plant species or other features download the .pdg file and click on the "Layers" tab. Turn features on or off by clicking the "Eye" icon.

-  Collection Point
-  Transect Point
-  Water Data
-  *Brasenia schreberi*
-  *Ceratophyllum demersum*
-  *Elatine species*
-  *Eleocharis species*
-  *Elodea nuttallii*
-  *Ludwigia species*
-  *Myriophyllum heterophyllum\**
-  *Najas flexilis*
-  *Najas guadalupensis*
-  *Nuphar variegata*
-  *Nymphaea odorata*
-  *Pontederia cordata*
-  *Potamogeton bicupulatus*
-  *Potamogeton epihydrus*
-  *Potamogeton foliosus*
-  *Potamogeton natans*
-  *Potamogeton pusillus*
-  *Potamogeton robbinsii*
-  *Sagittaria species*
-  *Typha species*
-  *Utricularia gibba*
-  *Utricularia macrorhiza*
-  *Utricularia radiata* \* Invasive



0 162.5 325 650 Feet

