



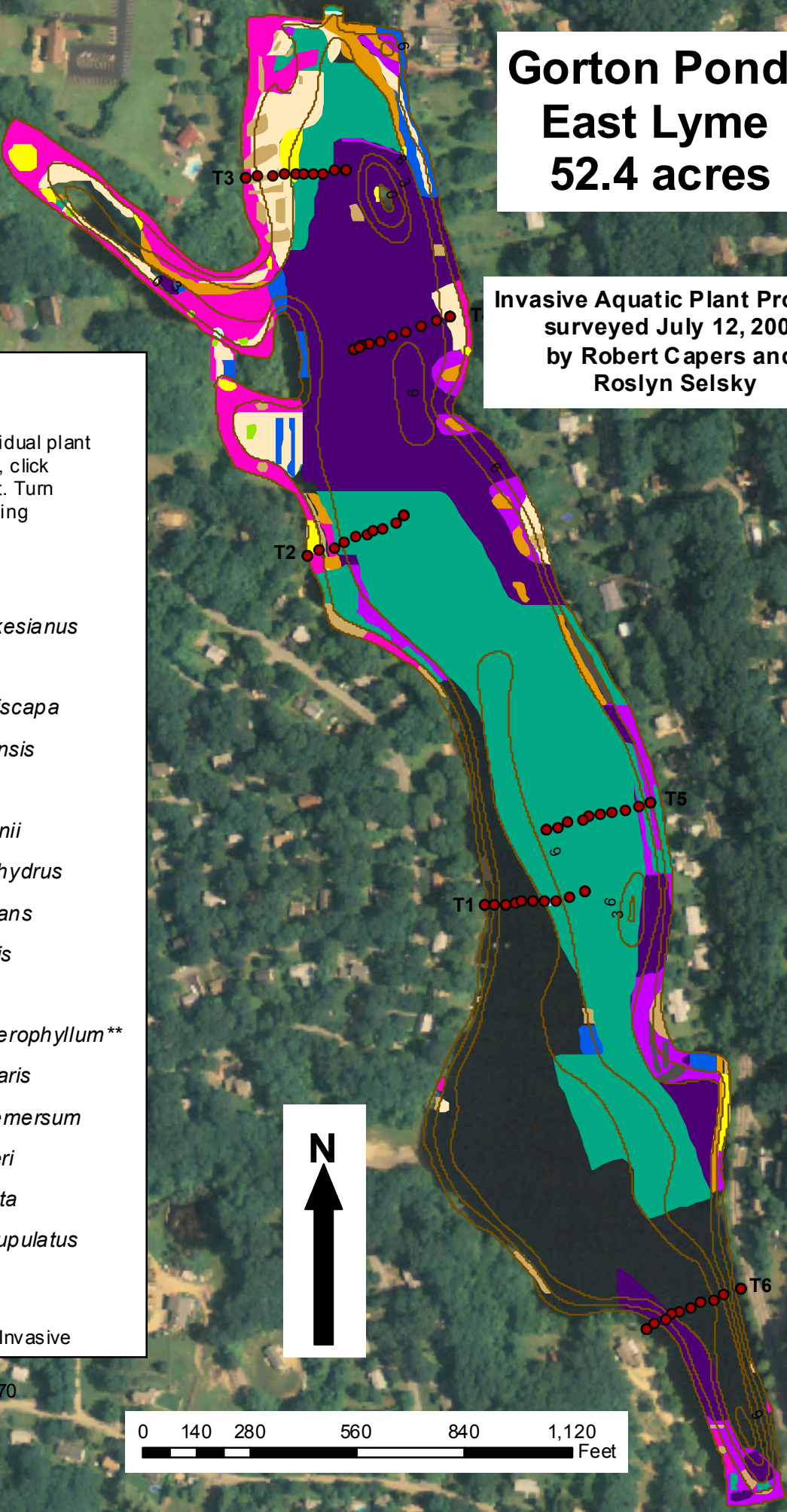
Gorton Pond, East Lyme 52.4 acres

Invasive Aquatic Plant Program
surveyed July 12, 2004
by Robert Capers and
Roslyn Selsky

Legend*

To view locations of individual plant species or other features, click on the "Layers" tab to left. Turn features on or off by clicking the "Eye" icons.

- *Transect Points*
- *Potamogeton oakesianus*
- *Utricularia gibba*
- *Utricularia geminiscapa*
- *Najas guadalupensis*
- *Eleocharis sp.*
- *Isoetes tuckermanii*
- *Potamogeton epihydrus*
- *Potamogeton natans*
- *Utricularia vulgaris*
- *Nuphar variegata*
- *Myriophyllum heterophyllum***
- *Eleocharis acicularis*
- *Ceratophyllum demersum*
- *Brasenia schreberi*
- *Nymphaea odorata*
- *Potamogeton bicupulatus*
- *Najas flexilis*
- *Elodea nuttallii* **Invasive



*Transect points from 5 to 70 meters are interpolated.

