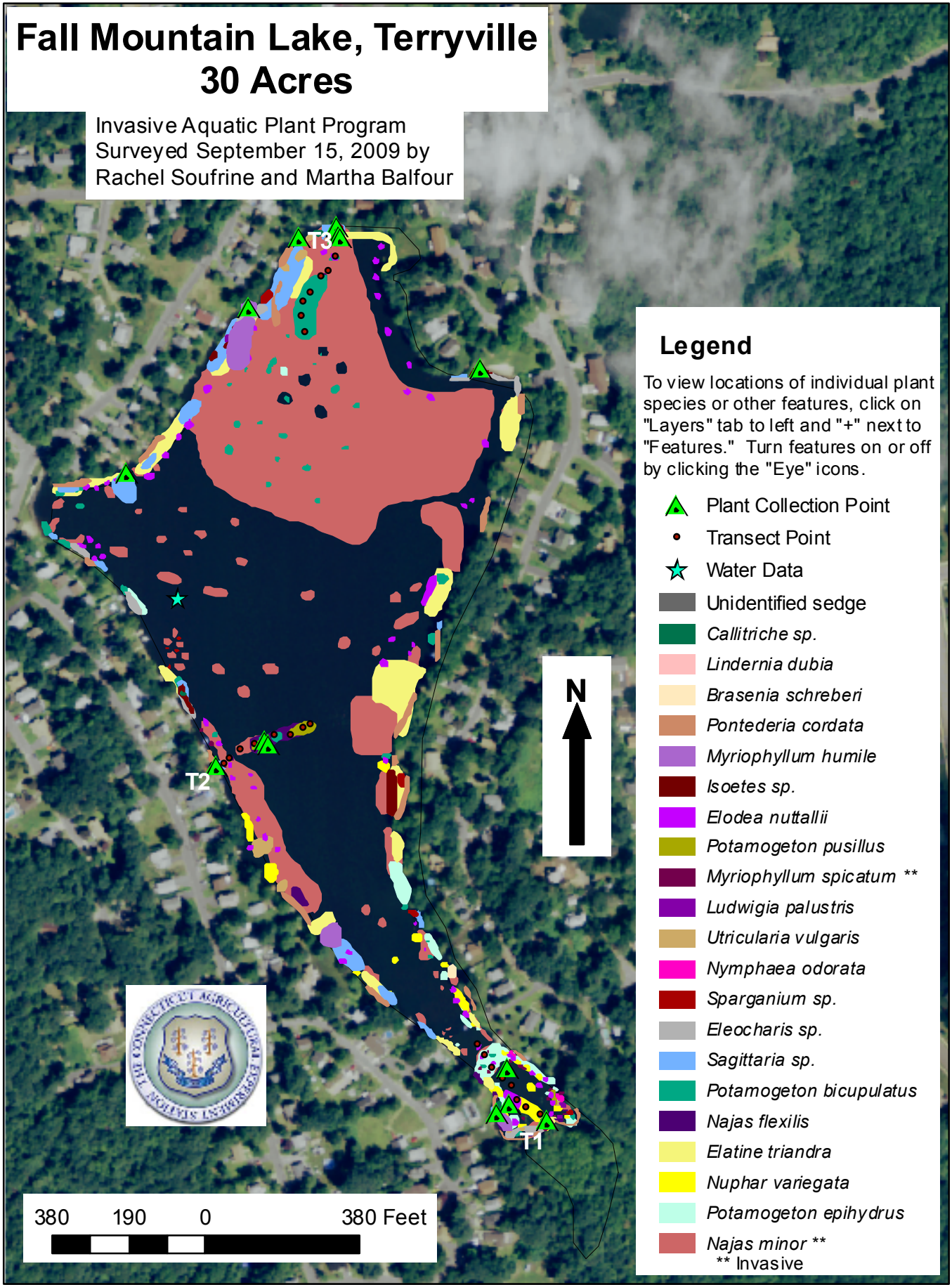


Fall Mountain Lake, Terryville 30 Acres

Invasive Aquatic Plant Program
 Surveyed September 15, 2009 by
 Rachel Soufrine and Martha Balfour



Legend

To view locations of individual plant species or other features, click on "Layers" tab to left and "+" next to "Features." Turn features on or off by clicking the "Eye" icons.

- Plant Collection Point
 - Transect Point
 - Water Data
 - Unidentified sedge
 - Callitriche* sp.
 - Lindernia dubia*
 - Brasenia schreberi*
 - Pontederia cordata*
 - Myriophyllum humile*
 - Isoetes* sp.
 - Elodea nuttallii*
 - Potamogeton pusillus*
 - Myriophyllum spicatum* **
 - Ludwigia palustris*
 - Utricularia vulgaris*
 - Nymphaea odorata*
 - Sparganium* sp.
 - Eleocharis* sp.
 - Sagittaria* sp.
 - Potamogeton bicupulatus*
 - Najas flexilis*
 - Elatine triandra*
 - Nuphar variegata*
 - Potamogeton epihydrus*
 - Najas minor* **
- ** Invasive

