

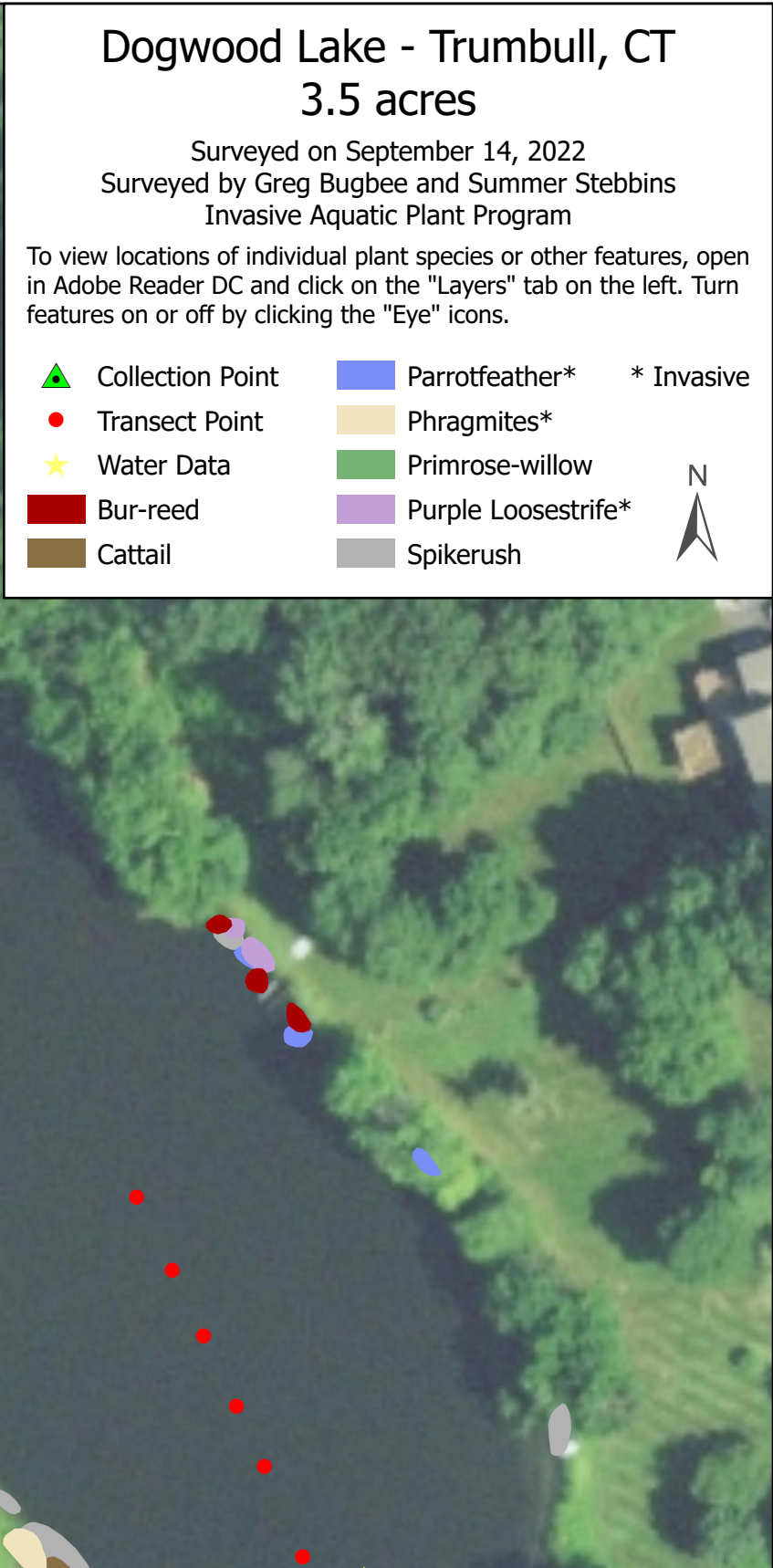
# Dogwood Lake - Trumbull, CT

## 3.5 acres

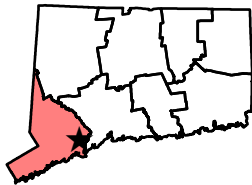
Surveyed on September 14, 2022  
Surveyed by Greg Bugbee and Summer Stebbins  
Invasive Aquatic Plant Program

To view locations of individual plant species or other features, open in Adobe Reader DC and click on the "Layers" tab on the left. Turn features on or off by clicking the "Eye" icons.

- |   |                  |   |                     |            |
|---|------------------|---|---------------------|------------|
|  | Collection Point |  | Parrotfeather*      | * Invasive |
|  | Transect Point   |  | Phragmites*         |            |
|  | Water Data       |  | Primrose-willow     |            |
|  | Bur-reed         |  | Purple Loosestrife* |            |
|  | Cattail          |  | Spikerush           |            |



**CAES**  
The Connecticut Agricultural Experiment Station  
Putting Science to Work for Society since 1875



0 50 100 200 Feet