



Deer Lake, Killingworth 32 Acres

Invasive Aquatic Plant Program
Surveyed September 10, 2009 by
Rachel Soufrine and Martha Balfour




Legend

To view locations of individual plant species or other features, click on "Layers" tab to left and "+" next to "Layers File". Turn features on or off by clicking the "Eye" icons.

 Plant Collection Point

 Transect Point

 Water Data

 *Myriophyllum humile*

 *Najas gracillima*

 *Eriocaulon aquaticum*

 *Eleocharis sp.*

 *Isoetes sp.*


 *Potamogeton amplifolius*

 *Nuphar variegata*

 *Utricularia vulgaris*

 *Potamogeton bicupulatus*

 *Utricularia purpurea*

 *Utricularia gibba*

 *Gratiola aurea*

 *Utricularia radiata*


 *Potamogeton natans*

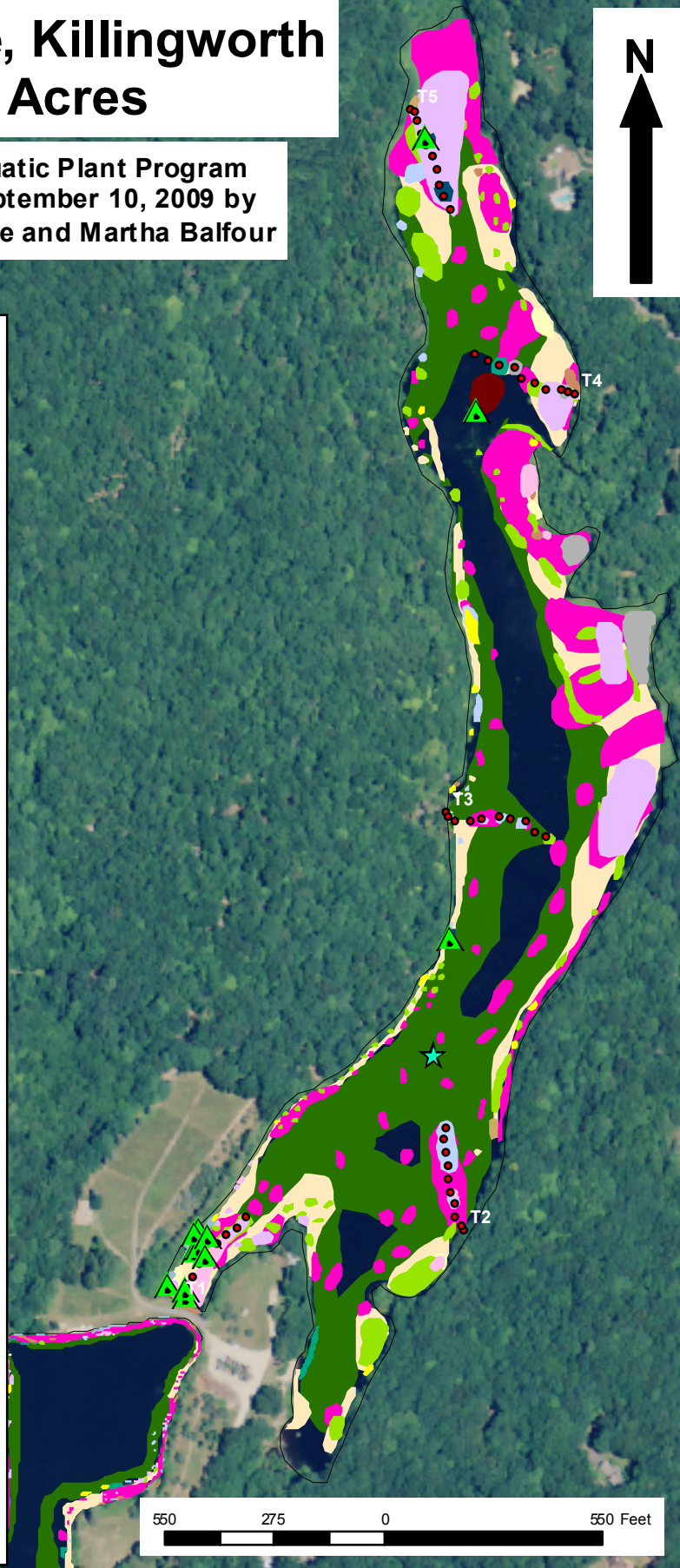
 *Pontederia cordata*

 *Utricularia intermedia*

 *Nymphaea odorata*

 *Brasenia schreberi*

 *Cabomba caroliniana* **
**Invasive



550 275 0 550 Feet