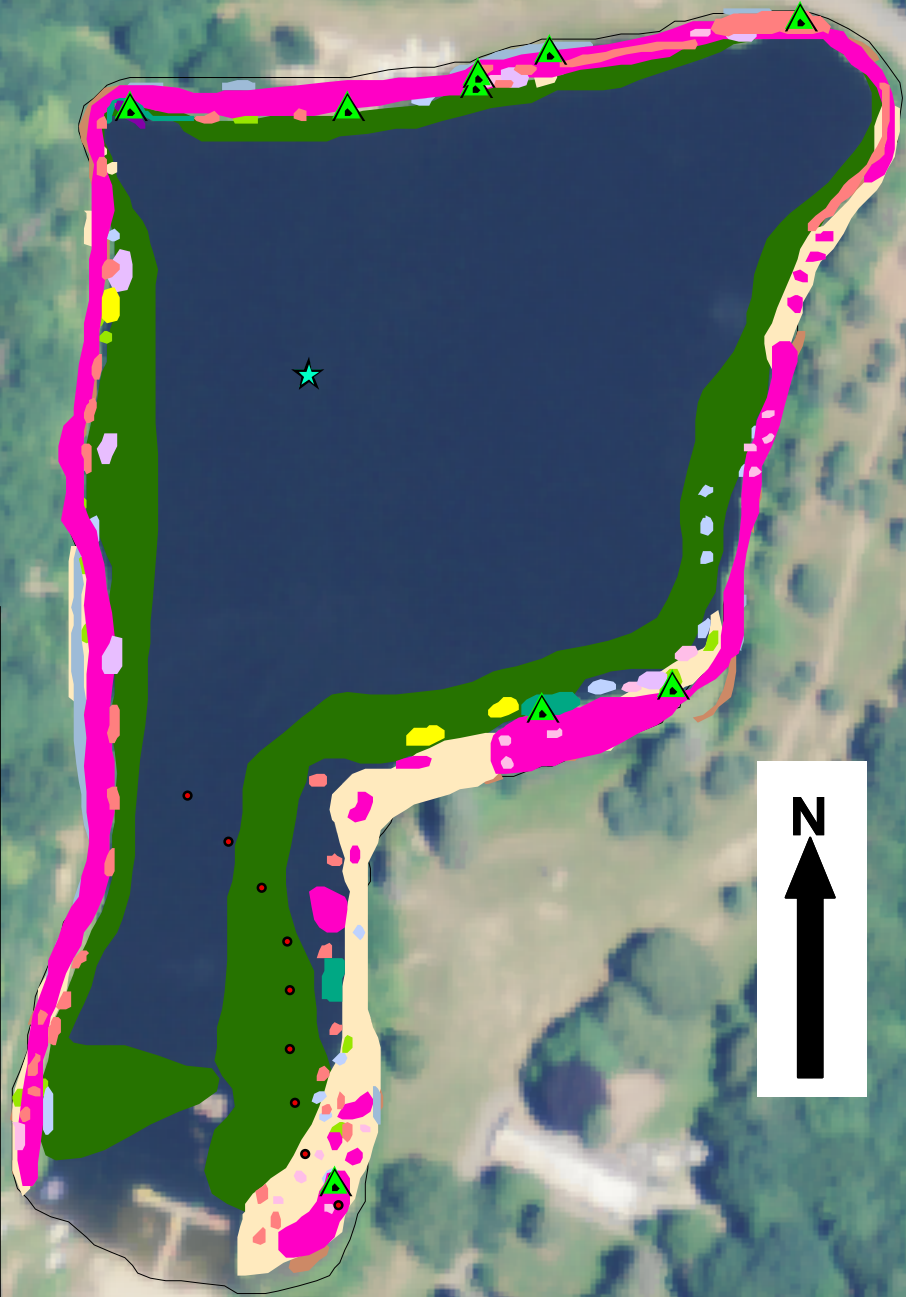


# Deer Lake Reservoir, Killingworth 6 Acres



Invasive Aquatic Plant Program  
 Surveyed September 14, 2009 by  
 Rachel Soufrine and Martha Balfour



## Legend

To view locations of individual plant species or other features, click on "layers" tab to left and "+" next to "Layers File". Turn features on or off by clicking the "Eye" icons.

-  Plant Collection Site
  -  Water Data
  -  Transect Point
  -  *Ludwigia palustris*
  -  *Nuphar variegata*
  -  *Potamogeton bicupulatus*
  -  *Nymphaoides cordata*
  -  *Utricularia purpurea*
  -  *Utricularia gibba*
  -  *Nymphaea odorata*
  -  *Gratiola aurea*
  -  *Utricularia radiata*
  -  *Potamogeton natans*
  -  *Brasenia schreberi*
  -  *Cabomba caroliniana* \*\*
  -  *Pontederia cordata*
- \*\*Invasive

140 70 0 140 Feet

