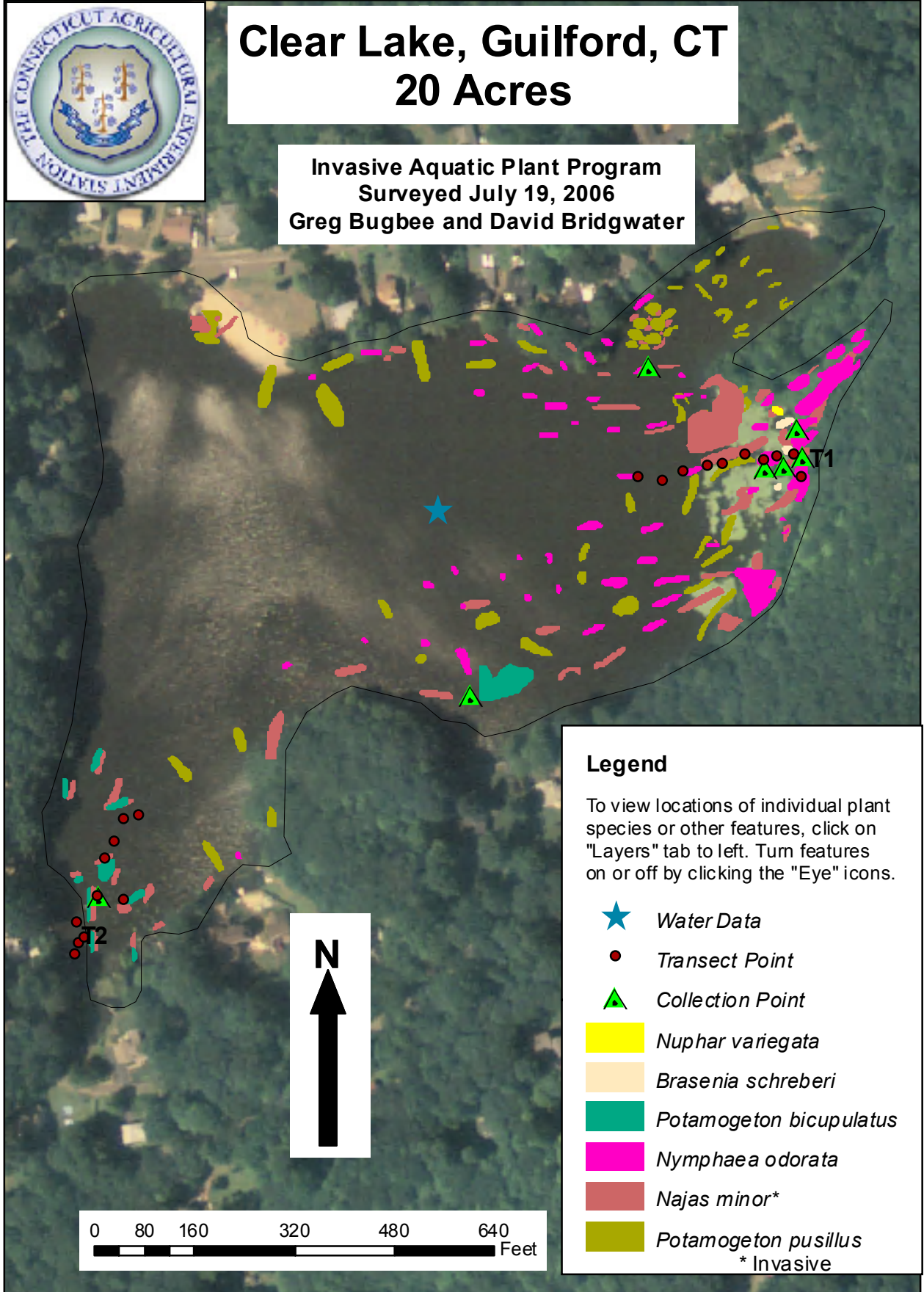













Clear Lake, Guilford, CT 20 Acres

Invasive Aquatic Plant Program
Surveyed July 19, 2006
Greg Bugbee and David Bridgwater



Legend

To view locations of individual plant species or other features, click on "Layers" tab to left. Turn features on or off by clicking the "Eye" icons.

-  *Water Data*
-  *Transect Point*
-  *Collection Point*
-  *Nuphar variegata*
-  *Brasenia schreberi*
-  *Potamogeton bicupulatus*
-  *Nymphaea odorata*
-  *Najas minor**
-  *Potamogeton pusillus*
* Invasive

