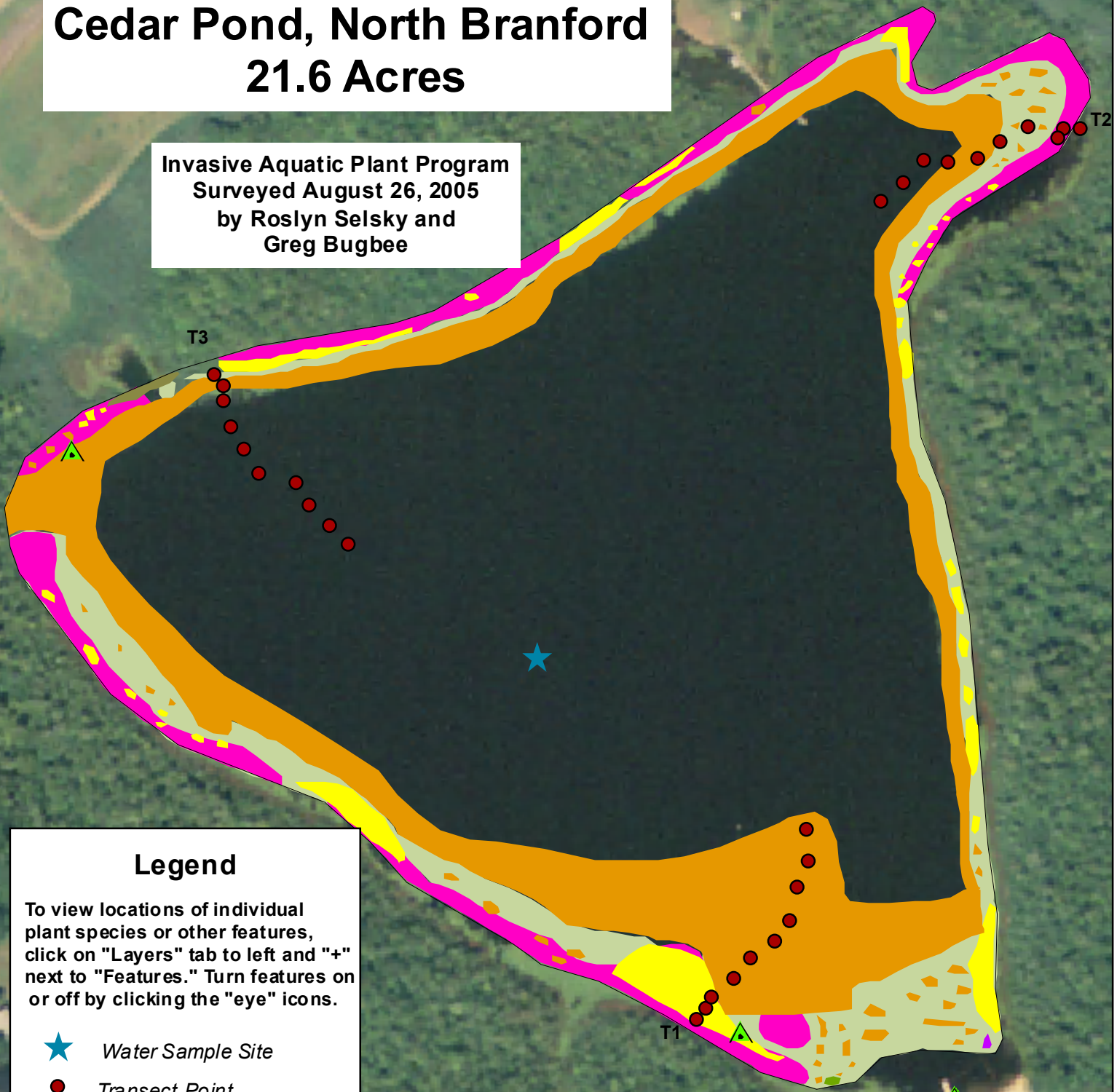


Cedar Pond, North Branford

21.6 Acres

Invasive Aquatic Plant Program
Surveyed August 26, 2005
by Roslyn Selsky and
Greg Bugbee



Legend

To view locations of individual plant species or other features, click on "Layers" tab to left and "+" next to "Features." Turn features on or off by clicking the "eye" icons.

- ★ Water Sample Site
- Transect Point
- ▲ Plant Collection Site
- Lemna minor*
- Elodea nuttallii*
- Potamogeton foliosus*
- Ceratophyllum demersum*
- Nuphar variegata*
- Nymphaea odorata*
- Zosterella dubia*

