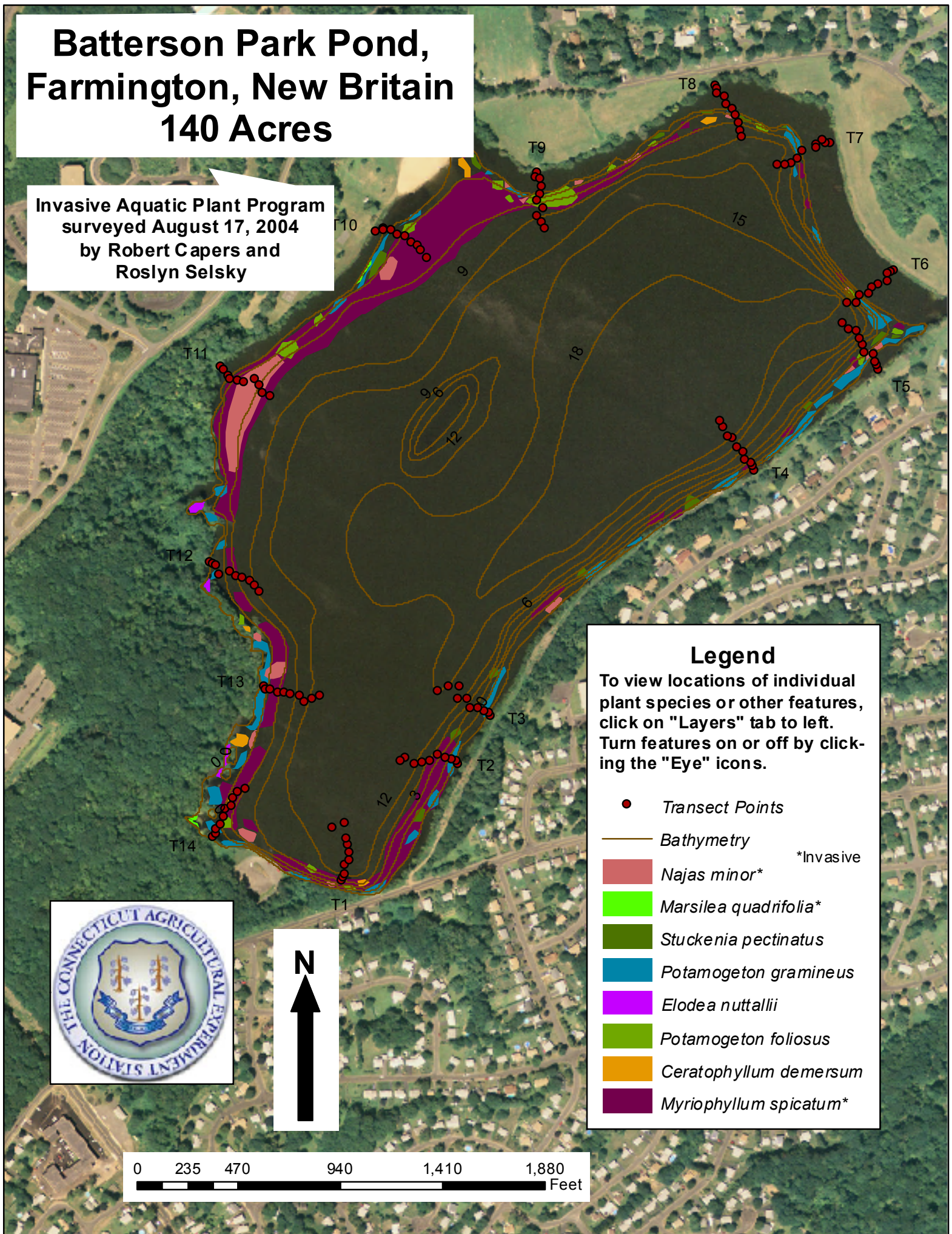


Batterson Park Pond, Farmington, New Britain 140 Acres

Invasive Aquatic Plant Program
surveyed August 17, 2004
by Robert Capers and
Roslyn Selsky



Legend

To view locations of individual plant species or other features, click on "Layers" tab to left. Turn features on or off by clicking the "Eye" icons.

- *Transect Points*
- *Bathymetry*
- *Najas minor** *Invasive
- *Marsilea quadrifolia**
- *Stuckenia pectinatus*
- *Potamogeton gramineus*
- *Elodea nuttallii*
- *Potamogeton foliosus*
- *Ceratophyllum demersum*
- *Myriophyllum spicatum**

