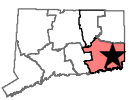
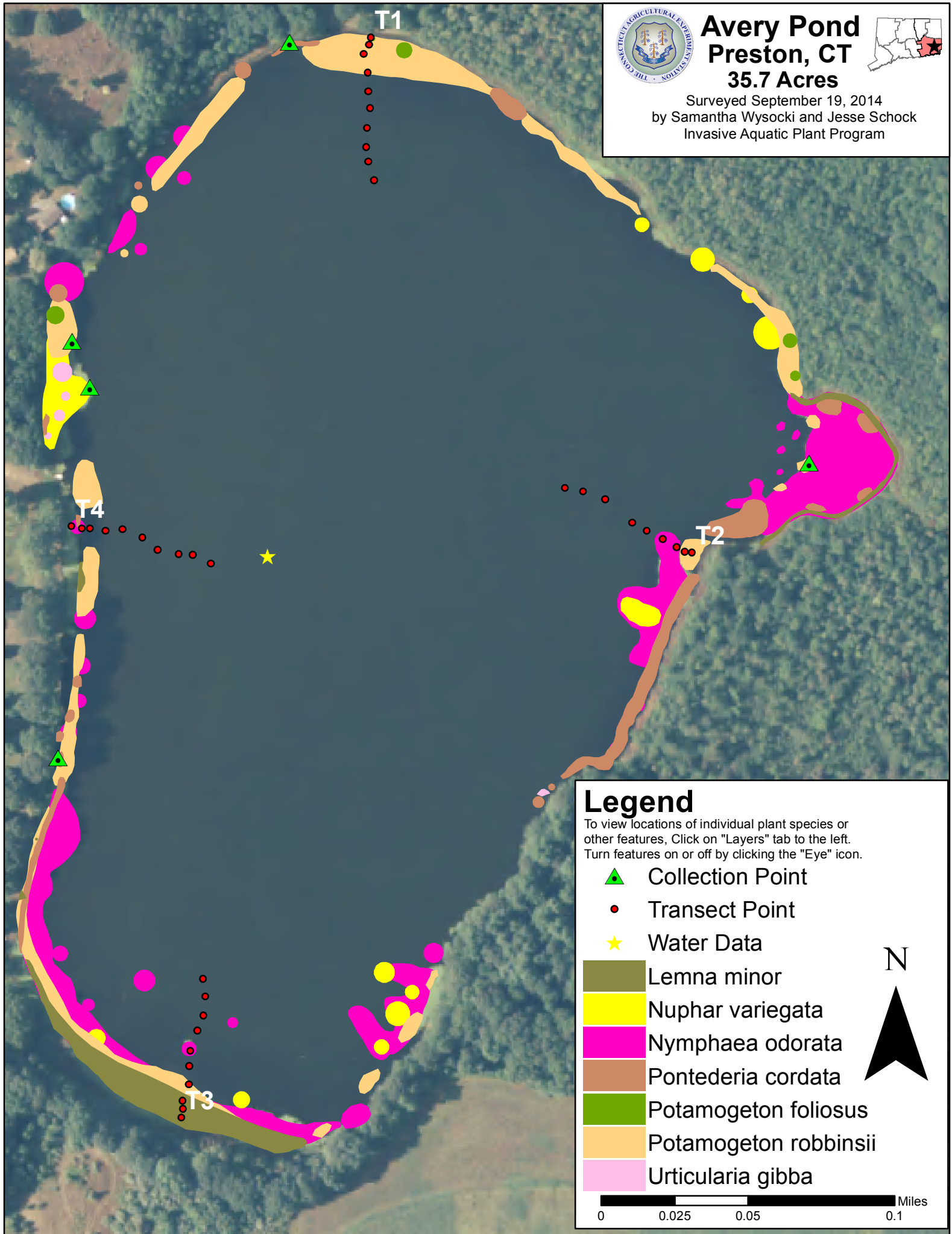




# Avery Pond Preston, CT 35.7 Acres



Surveyed September 19, 2014  
by Samantha Wysocki and Jesse Schock  
Invasive Aquatic Plant Program



## Legend

To view locations of individual plant species or other features, Click on "Layers" tab to the left. Turn features on or off by clicking the "Eye" icon.

Collection Point

Transect Point

Water Data

*Lemna minor*

*Nuphar variegata*

*Nymphaea odorata*

*Pontederia cordata*

*Potamogeton foliosus*

*Potamogeton robbinsii*

*Urticularia gibba*

N



0 0.025 0.05 0.1 Miles