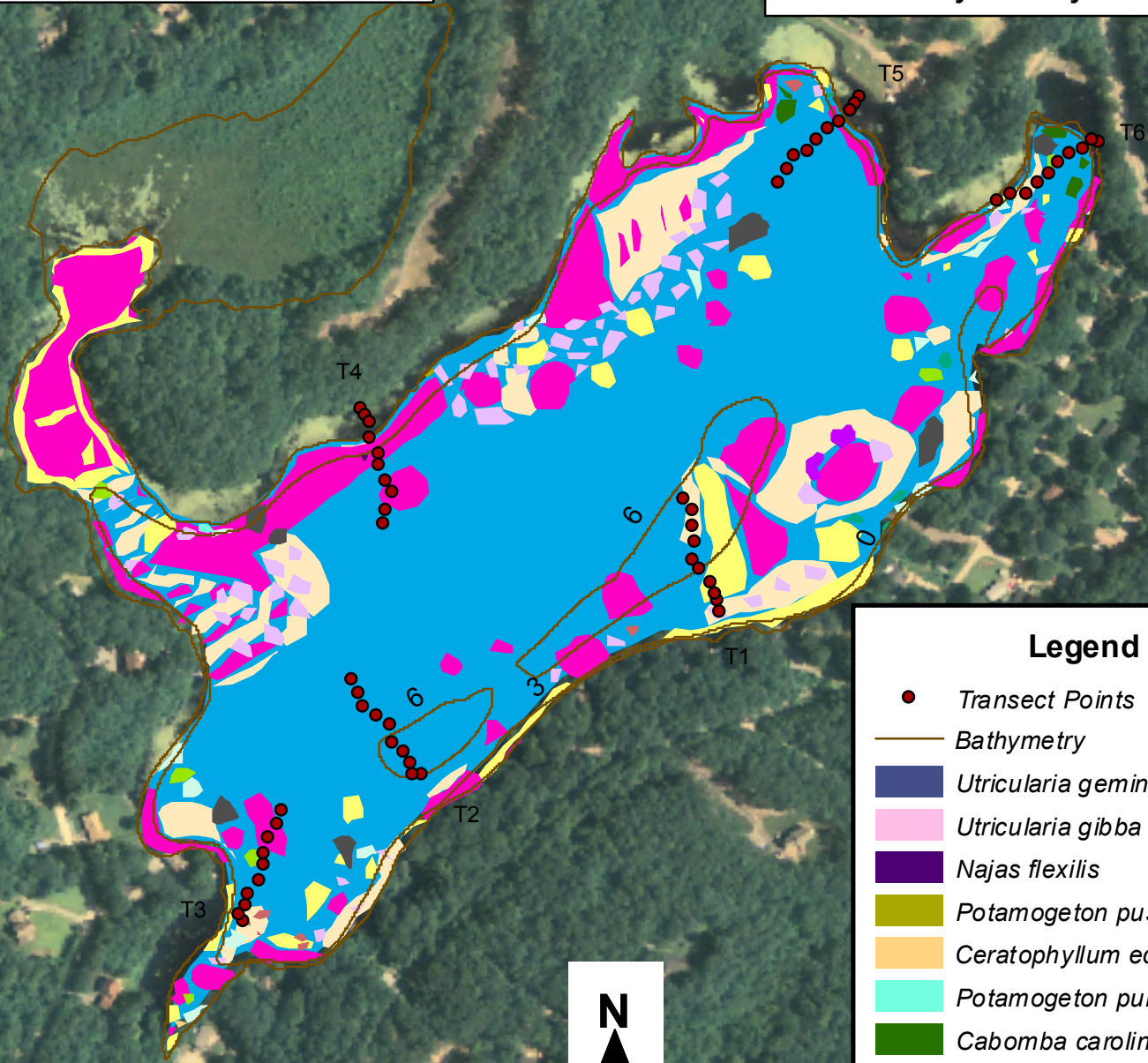
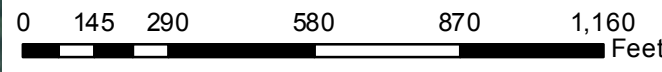
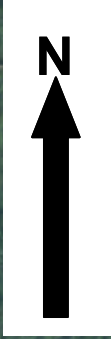


Anderson Pond North Stonington 56.6 acres

Invasive Aquatic Plant Program
surveyed August 12, 2004
by Robert Capers and
Roslyn Selsky



To view locations of individual plant species or other features, click on "Layers" tab to left and "+" next to "Features." Turn features on or off by clicking the "eye" icons.



Legend

- Transect Points
- Bathymetry
- *Utricularia geminiscapa*
- *Utricularia gibba*
- *Najas flexilis*
- *Potamogeton pusillus*
- *Ceratophyllum echinatum*
- *Potamogeton pulcher*
- *Cabomba caroliniana**
- *Potamogeton natans*
- *Elodea nuttallii*
- *Eleocharis acicularis*
- *Potamogeton bicupulatus*
- *Nymphoides cordata*
- *Potamogeton epihydrus*
- *Utricularia purpurea*
- *Nuphar variegata*
- *Nymphaea odorata*
- *Brasenia schreberi*
- *Myriophyllum heterophyllum**

*Invasive