

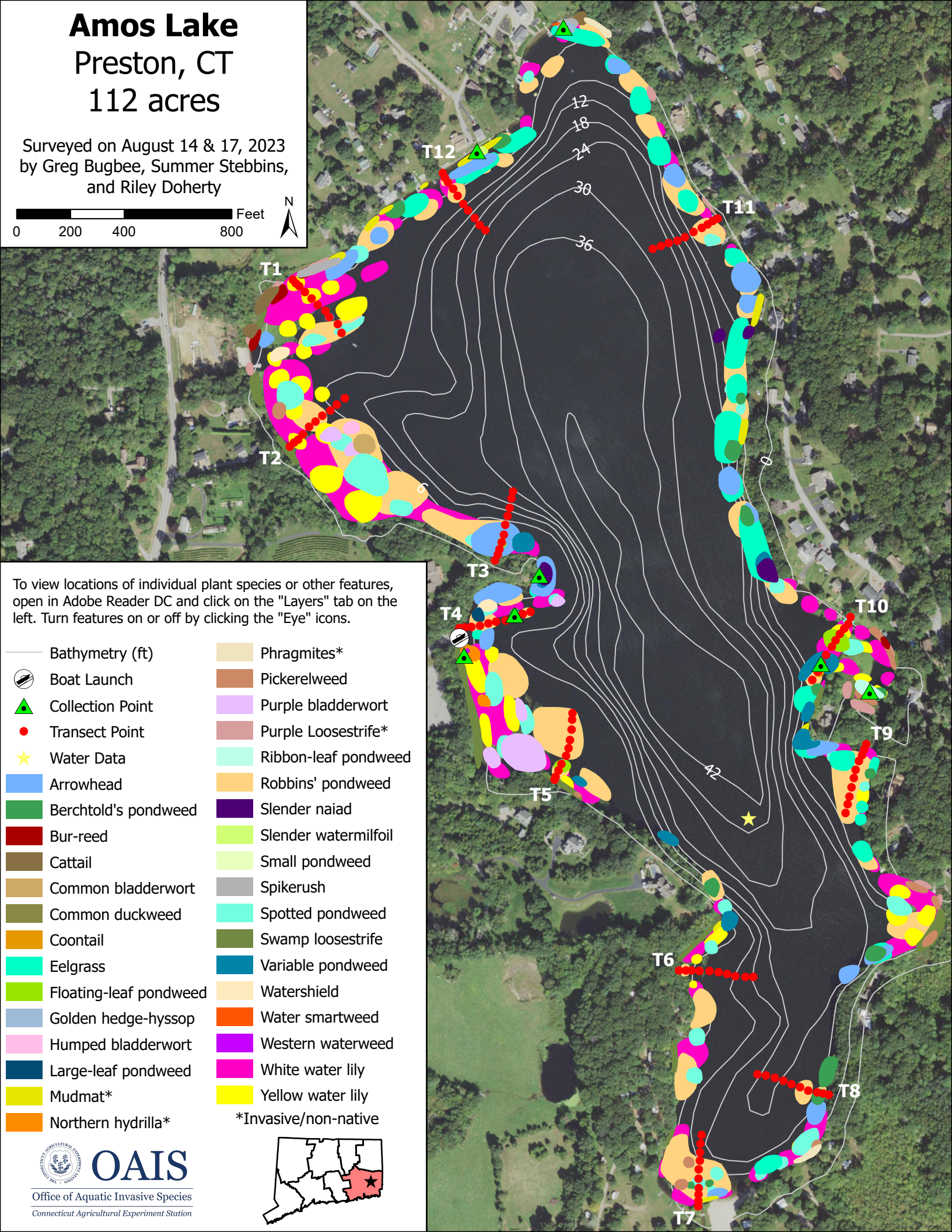
# Amos Lake

## Preston, CT

### 112 acres

Surveyed on August 14 & 17, 2023  
by Greg Bugbee, Summer Stebbins,  
and Riley Doherty

0 200 400 800 Feet



To view locations of individual plant species or other features,  
open in Adobe Reader DC and click on the "Layers" tab on the  
left. Turn features on or off by clicking the "Eye" icons.

- |                        |                      |
|------------------------|----------------------|
| — Bathymetry (ft)      | Phragmites*          |
| ⊘ Boat Launch          | Pickerelweed         |
| ▲ Collection Point     | Purple bladderwort   |
| ● Transect Point       | Purple Loosestrife*  |
| ★ Water Data           | Ribbon-leaf pondweed |
| Arrowhead              | Robbins' pondweed    |
| Berchtold's pondweed   | Slender naiad        |
| Bur-reed               | Slender watermilfoil |
| Cattail                | Small pondweed       |
| Common bladderwort     | Spikerush            |
| Common duckweed        | Spotted pondweed     |
| Coontail               | Swamp loosestrife    |
| Eelgrass               | Variable pondweed    |
| Floating-leaf pondweed | Watershield          |
| Golden hedge-hyssop    | Water smartweed      |
| Humped bladderwort     | Western waterweed    |
| Large-leaf pondweed    | White water lily     |
| Mudmat*                | Yellow water lily    |
| Northern hydrilla*     |                      |

\*Invasive/non-native

