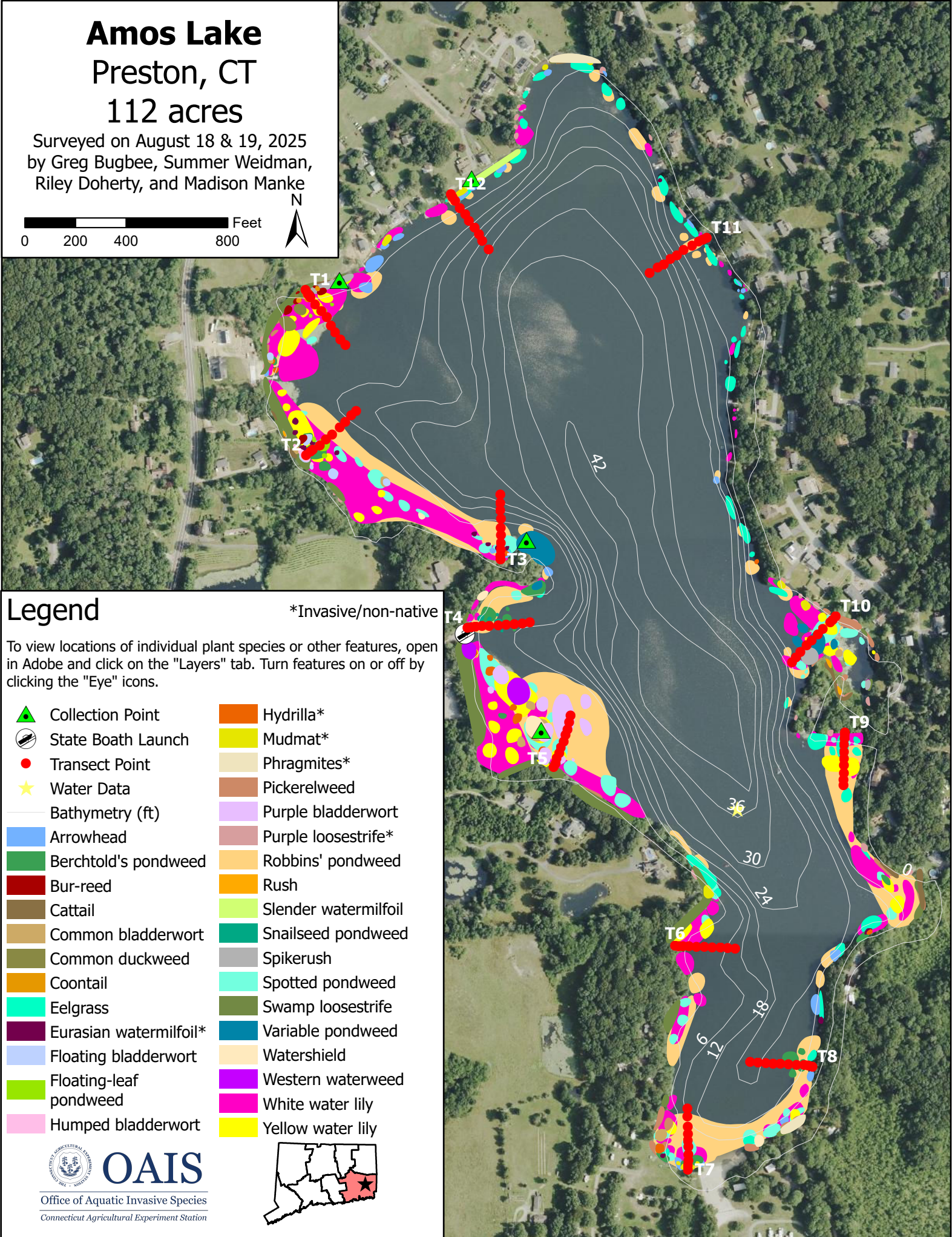
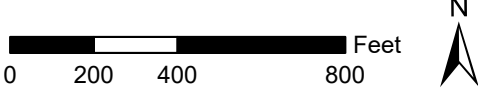


Amos Lake

Preston, CT

112 acres

Surveyed on August 18 & 19, 2025
 by Greg Bugbee, Summer Weidman,
 Riley Doherty, and Madison Manke



Legend

*Invasive/non-native

To view locations of individual plant species or other features, open in Adobe and click on the "Layers" tab. Turn features on or off by clicking the "Eye" icons.

- | | |
|------------------------|----------------------|
| Collection Point | Hydrilla* |
| State Boath Launch | Mudmat* |
| Transect Point | Phragmites* |
| Water Data | Pickerelweed |
| Bathymetry (ft) | Purple bladderwort |
| Arrowhead | Purple loosestrife* |
| Berchtold's pondweed | Robbins' pondweed |
| Bur-reed | Rush |
| Cattail | Slender watermilfoil |
| Common bladderwort | Snailseed pondweed |
| Common duckweed | Spikerush |
| Coontail | Spotted pondweed |
| Eelgrass | Swamp loosestrife |
| Eurasian watermilfoil* | Variable pondweed |
| Floating bladderwort | Watershield |
| Floating-leaf pondweed | Western waterweed |
| Humped bladderwort | White water lily |
| | Yellow water lily |



OAIS

Office of Aquatic Invasive Species
 Connecticut Agricultural Experiment Station

