

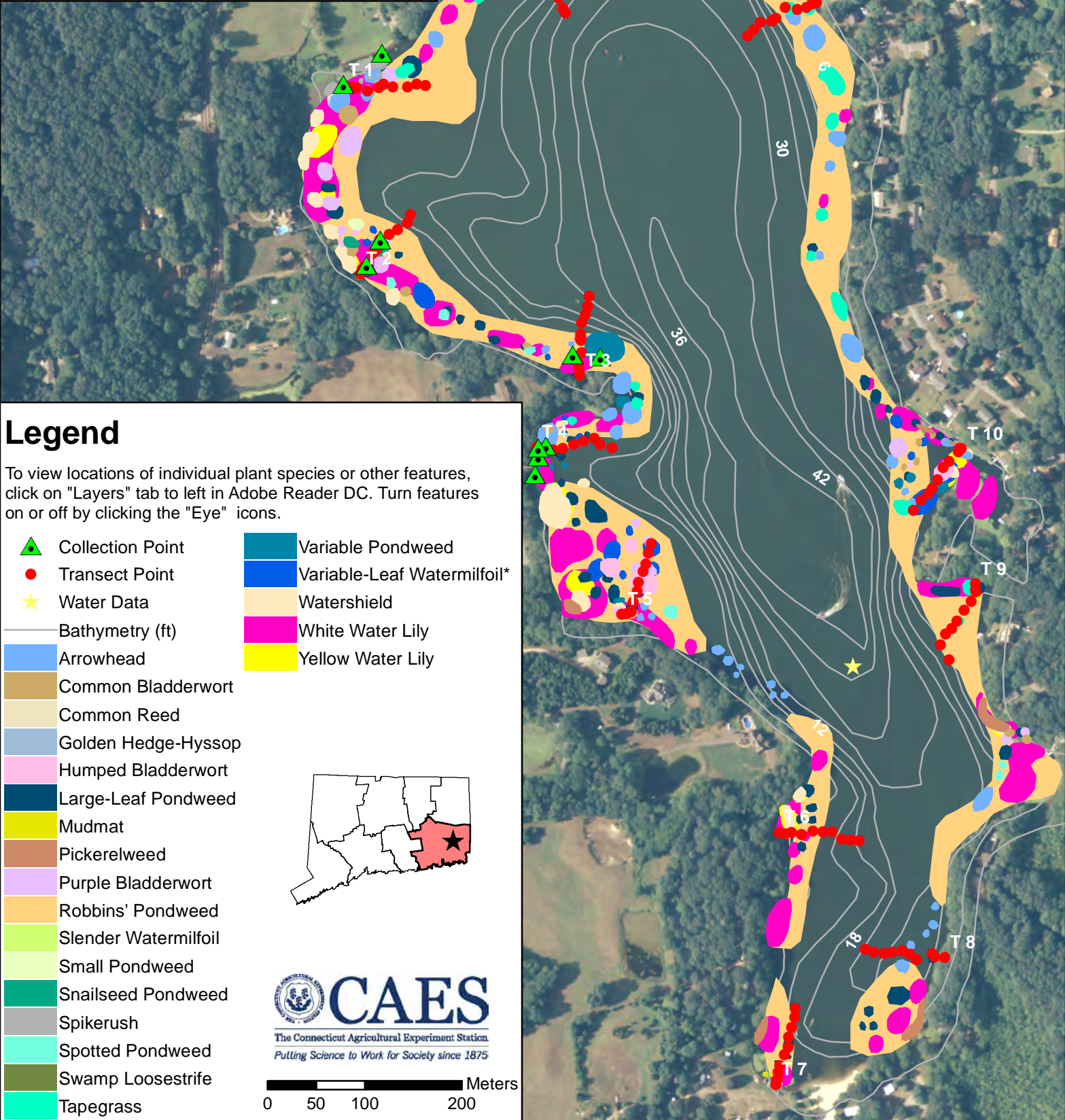


# Amos Lake Preston, CT 112.4 acres

Surveyed August 24, 28 & 29, 2018

by Summer Stebbins  
and Riley Doherty

Invasive Aquatic Plant Program



## Legend

To view locations of individual plant species or other features, click on "Layers" tab to left in Adobe Reader DC. Turn features on or off by clicking the "Eye" icons.

- |                      |                             |
|----------------------|-----------------------------|
| Collection Point     | Variable Pondweed           |
| Transect Point       | Variable-Leaf Watermilfoil* |
| Water Data           | Watershield                 |
| Bathymetry (ft)      | White Water Lily            |
| Arrowhead            | Yellow Water Lily           |
| Common Bladderwort   |                             |
| Common Reed          |                             |
| Golden Hedge-Hyssop  |                             |
| Humped Bladderwort   |                             |
| Large-Leaf Pondweed  |                             |
| Mudmat               |                             |
| Pickerelweed         |                             |
| Purple Bladderwort   |                             |
| Robbins' Pondweed    |                             |
| Slender Watermilfoil |                             |
| Small Pondweed       |                             |
| Snailseed Pondweed   |                             |
| Spikerush            |                             |
| Spotted Pondweed     |                             |
| Swamp Loosestrife    |                             |
| Tapegrass            |                             |

