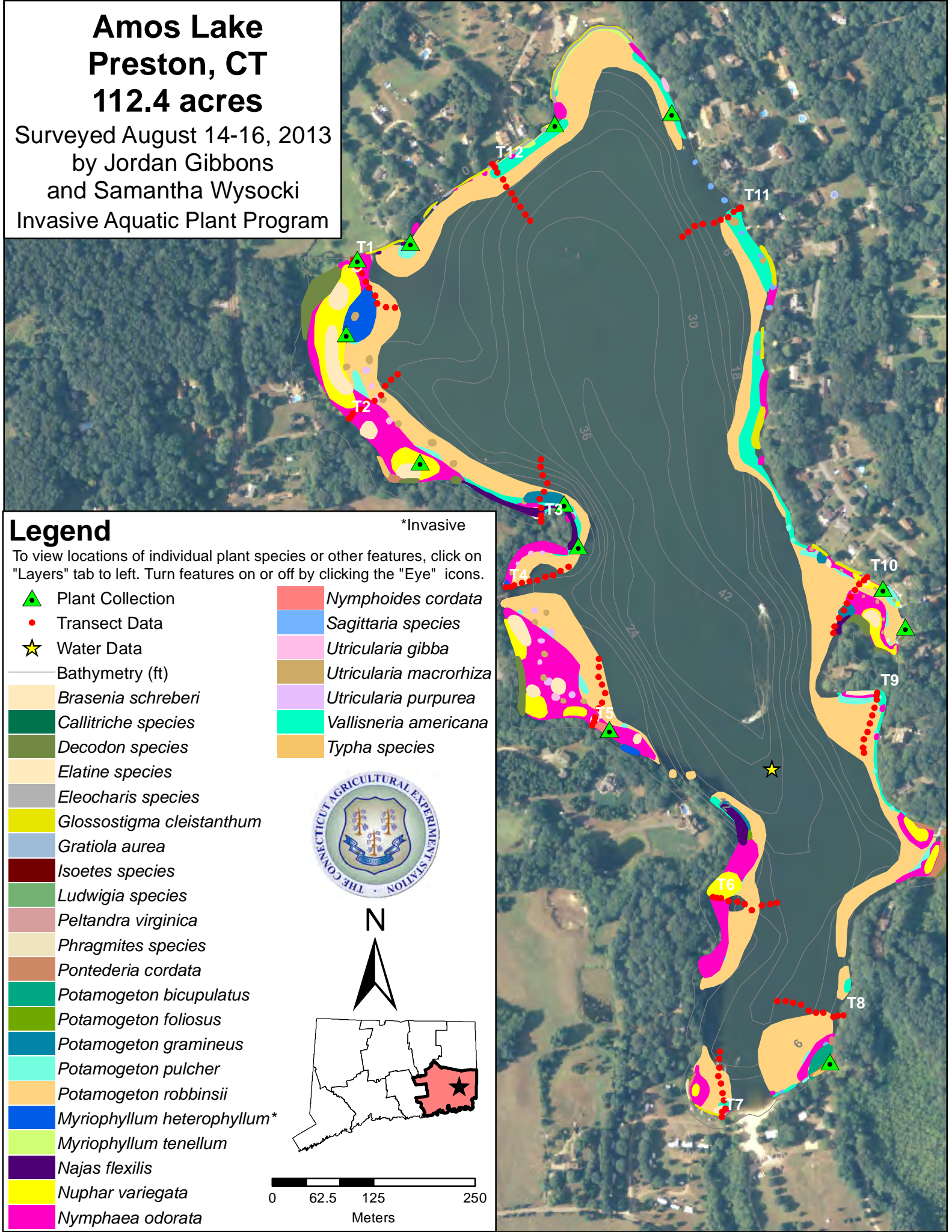


Amos Lake Preston, CT 112.4 acres

Surveyed August 14-16, 2013
by Jordan Gibbons
and Samantha Wysocki
Invasive Aquatic Plant Program



Legend

To view locations of individual plant species or other features, click on "Layers" tab to left. Turn features on or off by clicking the "Eye" icons.

- Plant Collection
- Transect Data
- Water Data
- Bathymetry (ft)
- Brasenia schreberi*
- Callitriche species*
- Decodon species*
- Elatine species*
- Eleocharis species*
- Glossostigma cleistanthum*
- Gratiola aurea*
- Isoetes species*
- Ludwigia species*
- Peltandra virginica*
- Phragmites species*
- Pontederia cordata*
- Potamogeton bicupulatus*
- Potamogeton foliosus*
- Potamogeton gramineus*
- Potamogeton pulcher*
- Potamogeton robbinsii*
- Myriophyllum heterophyllum**
- Myriophyllum tenellum*
- Najas flexilis*
- Nuphar variegata*
- Nymphaea odorata*
- Nymphoides cordata*
- Sagittaria species*
- Utricularia gibba*
- Utricularia macrorhiza*
- Utricularia purpurea*
- Vallisneria americana*
- Typha species*

*Invasive

