





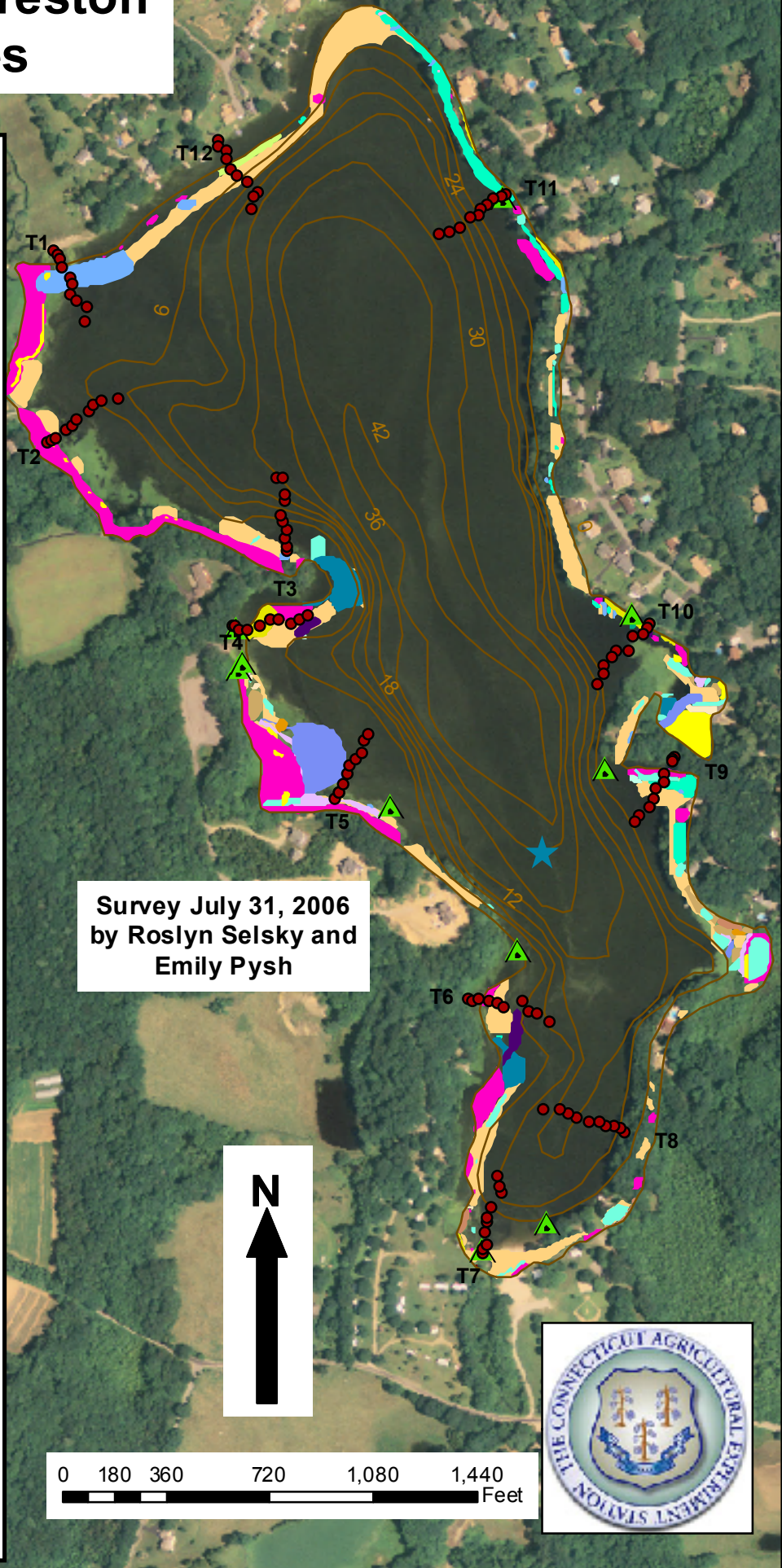


Amos Lake, Preston 113 Acres

Legend

To view locations of individual plant species or other features, click on "Layers" tab to left and "+" next to "Features." Turn features on or off by clicking the "eye" icons.

-  Water Sample Site
-  Transect Points
-  Plant Collection Site
-  Bathymetry
-  *Decodon verticillatus*
-  *Brasenia schreberi*
-  *Ceratophyllum demersum*
-  *Isoetes* sp.
-  *Myriophyllum heterophyllum* X *laxum**
-  *Myriophyllum tenellum*
-  *Najas flexilis*
-  *Nuphar variegata*
-  *Potamogeton bicupulatus*
-  *Potamogeton epihydrus*
-  *Potamogeton gramineus*
-  *Potamogeton pulcher*
-  *Pontederia cordata*
-  *Sagittaria* sp.
-  *Utricularia gibba*
-  *Utricularia purpurea*
-  *Utricularia radiata*
-  *Utricularia vulgaris*
-  *Vallisneria americana*
-  *Glossostigma cleistanthum**
-  *Nymphaea odorata*
-  *Potamogeton robbinsii* *Invasive



Survey July 31, 2006
by Roslyn Selsky and
Emily Pysh

