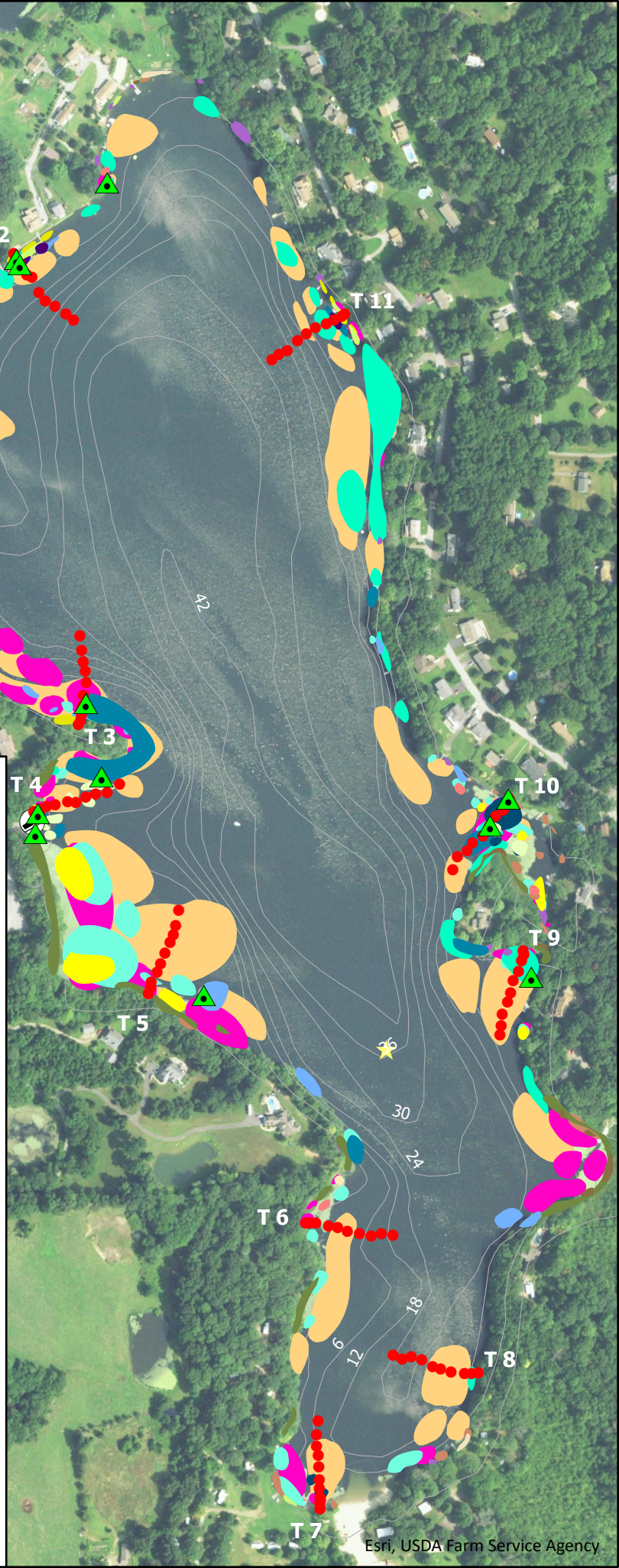
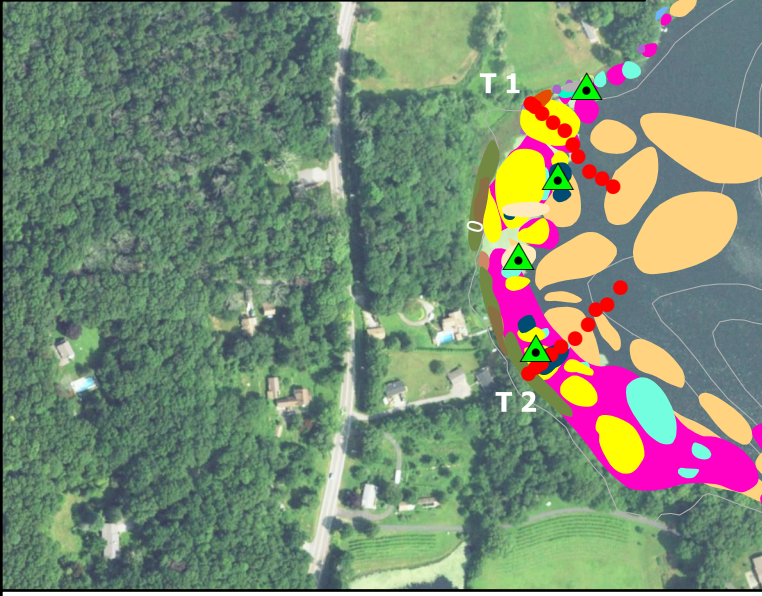


Amos Lake Preston, CT 112.4 acres

Surveyed August 23 & 24, 2022
by Greg Bugbee, Summer Stebbins,
and Eva Ramey

Invasive Aquatic Plant Program



Legend

To view locations of individual plant species or other features, open in Adobe Reader DC and click on the "Layers" tab on the left. Turn features on or off by clicking the "Eye" icons.

*Invasive

- | | |
|------------------------|-----------------------|
| Collection Point | Little floating heart |
| Transect Point | Mudmat |
| Water Data | Phragmites* |
| State Boat Launch | Pickerelweed |
| Bathymetry (ft) | Purple loosestrife* |
| Arrowhead | Robbins' pondweed |
| Berchtold's pondweed | Slender naiad |
| Bur-reed | Slender watermilfoil |
| Cattail | Spikerush |
| Coontail | Spotted pondweed |
| Eelgrass | Swamp Loosestrife |
| Eurasian watermilfoil* | Variable pondweed |
| Grassy arrowhead | Watershield |
| Great duckweed | White water lily |
| Large-leaf pondweed | Yellow water lily |

