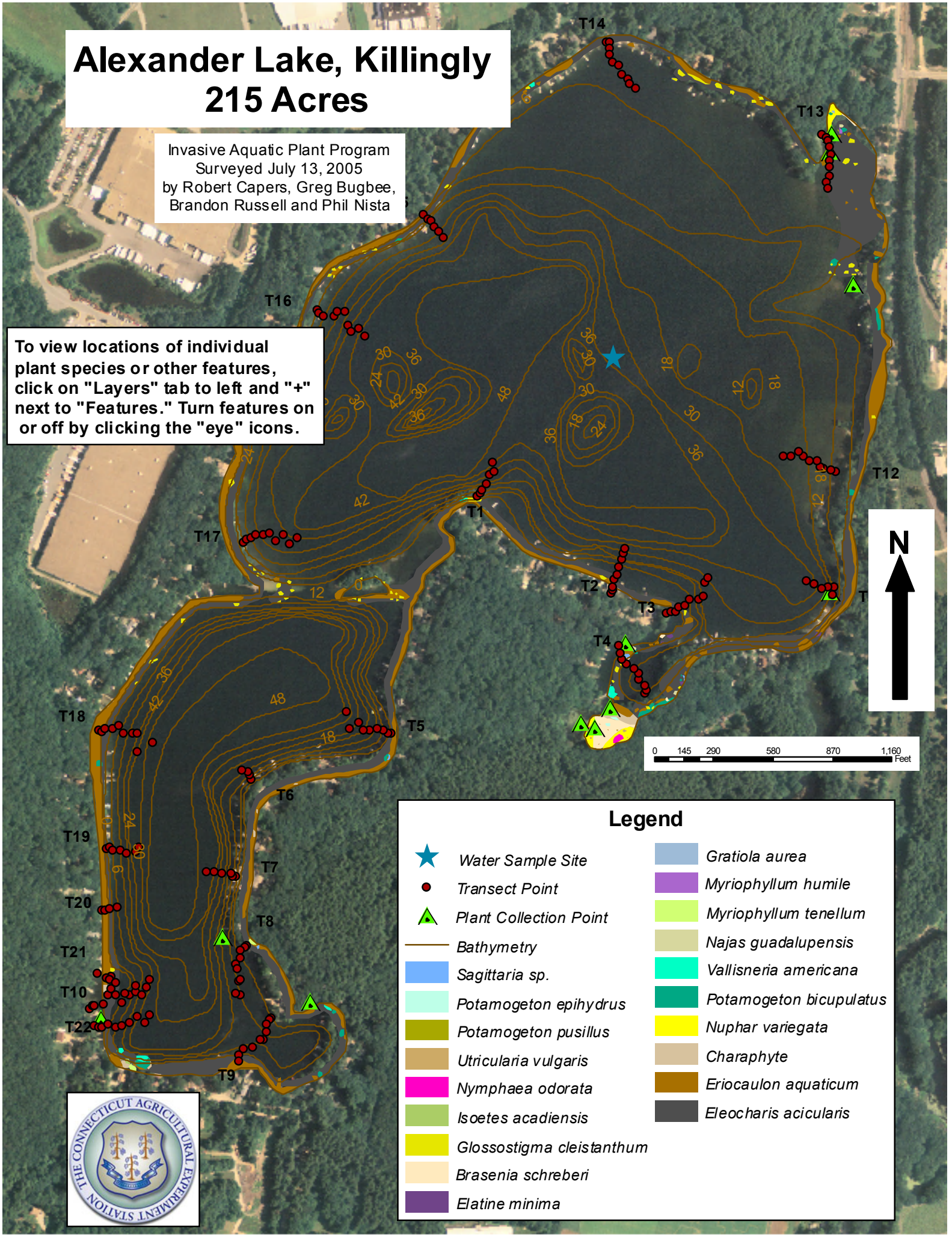


Alexander Lake, Killingly

215 Acres

Invasive Aquatic Plant Program
 Surveyed July 13, 2005
 by Robert Capers, Greg Bugbee,
 Brandon Russell and Phil Nista

To view locations of individual
 plant species or other features,
 click on "Layers" tab to left and "+"
 next to "Features." Turn features on
 or off by clicking the "eye" icons.



Legend

- | | |
|----------------------------------|--------------------------------|
| Water Sample Site | <i>Gratiola aurea</i> |
| Transect Point | <i>Myriophyllum humile</i> |
| Plant Collection Point | <i>Myriophyllum tenellum</i> |
| Bathymetry | <i>Najas guadalupensis</i> |
| <i>Sagittaria sp.</i> | <i>Vallisneria americana</i> |
| <i>Potamogeton epihydrus</i> | <i>Potamogeton bicipulatus</i> |
| <i>Potamogeton pusillus</i> | <i>Nuphar variegata</i> |
| <i>Utricularia vulgaris</i> | Charophyte |
| <i>Nymphaea odorata</i> | <i>Eriocaulon aquaticum</i> |
| <i>Isoetes acadensis</i> | <i>Eleocharis acicularis</i> |
| <i>Glossostigma cleistanthum</i> | |
| <i>Brasenia schreberi</i> | |
| <i>Elatine minima</i> | |

