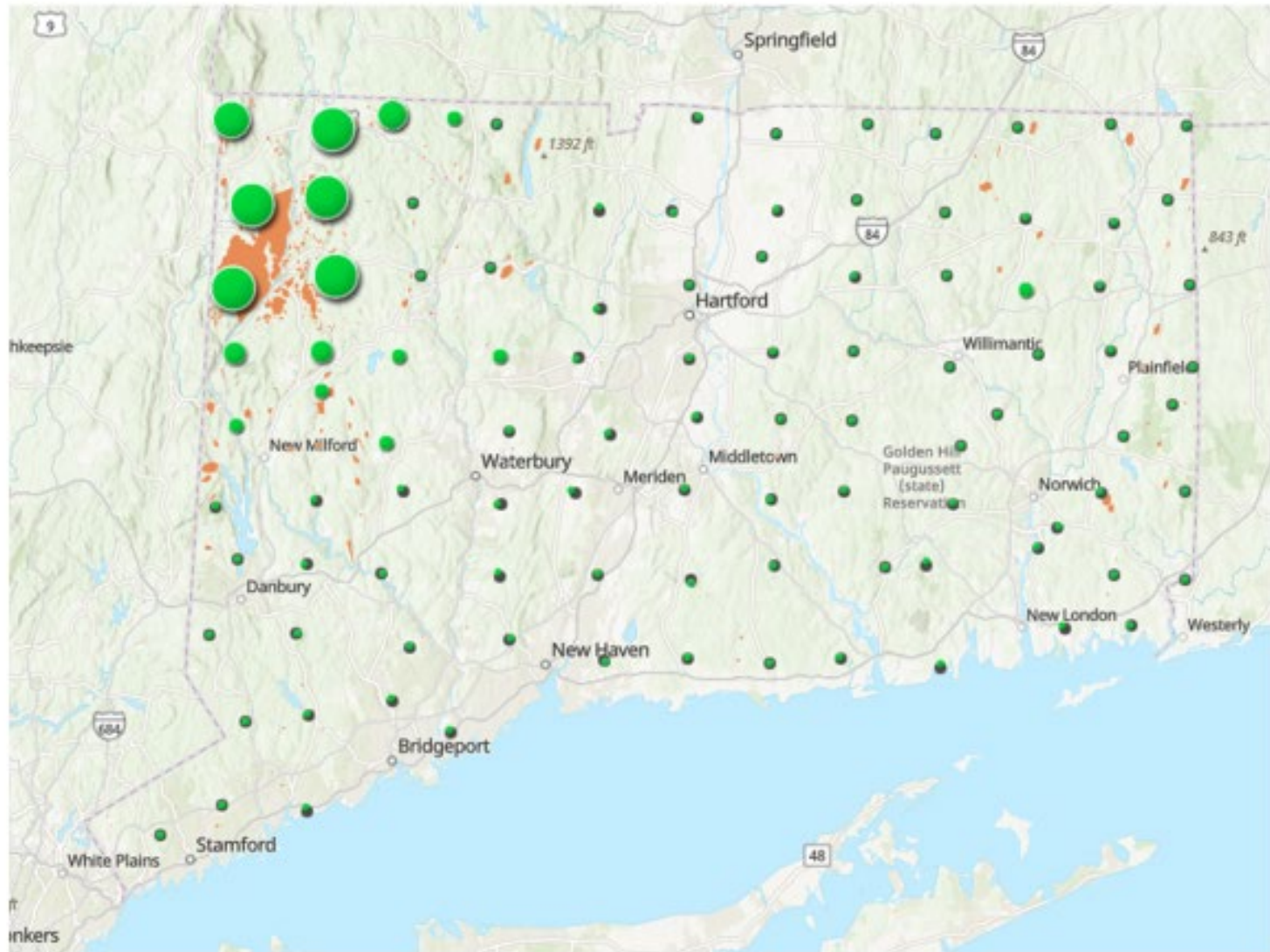


LDD and SLF: Alphabet Soup

Vicki Smith
CT Agricultural Experiment Station
New Haven, CT
Portal.ct.gov/caes

Aerial Survey 2022:

- **6 missions completed within one week.**
- **46,072 acres LDD: Litchfield County.**
- **1,622 acres BLD: Fairfield County.**



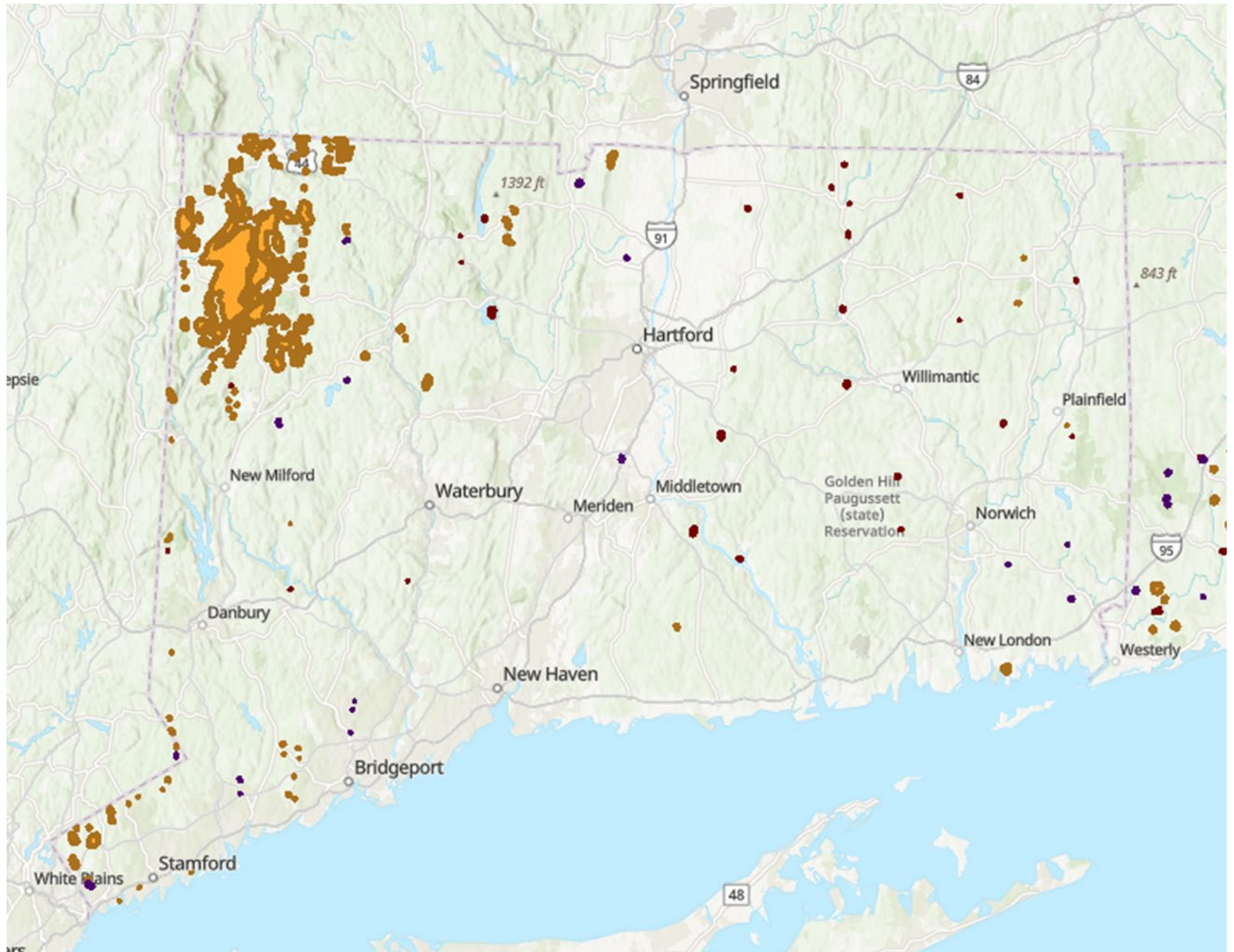


CAES
The Connecticut Agricultural Experiment Station
Putting Science to Work for Society since 1875



CAES
The Connecticut Agricultural Experiment Station
Putting Science to Work for Society since 1875





Expectations for 2023:

- **Lots of egg masses.**
- **Easy winter (so far), not too cold or snowy.**
- **Hope for a wet spring!**

★★★
WANTED

DEAD OR ALIVE



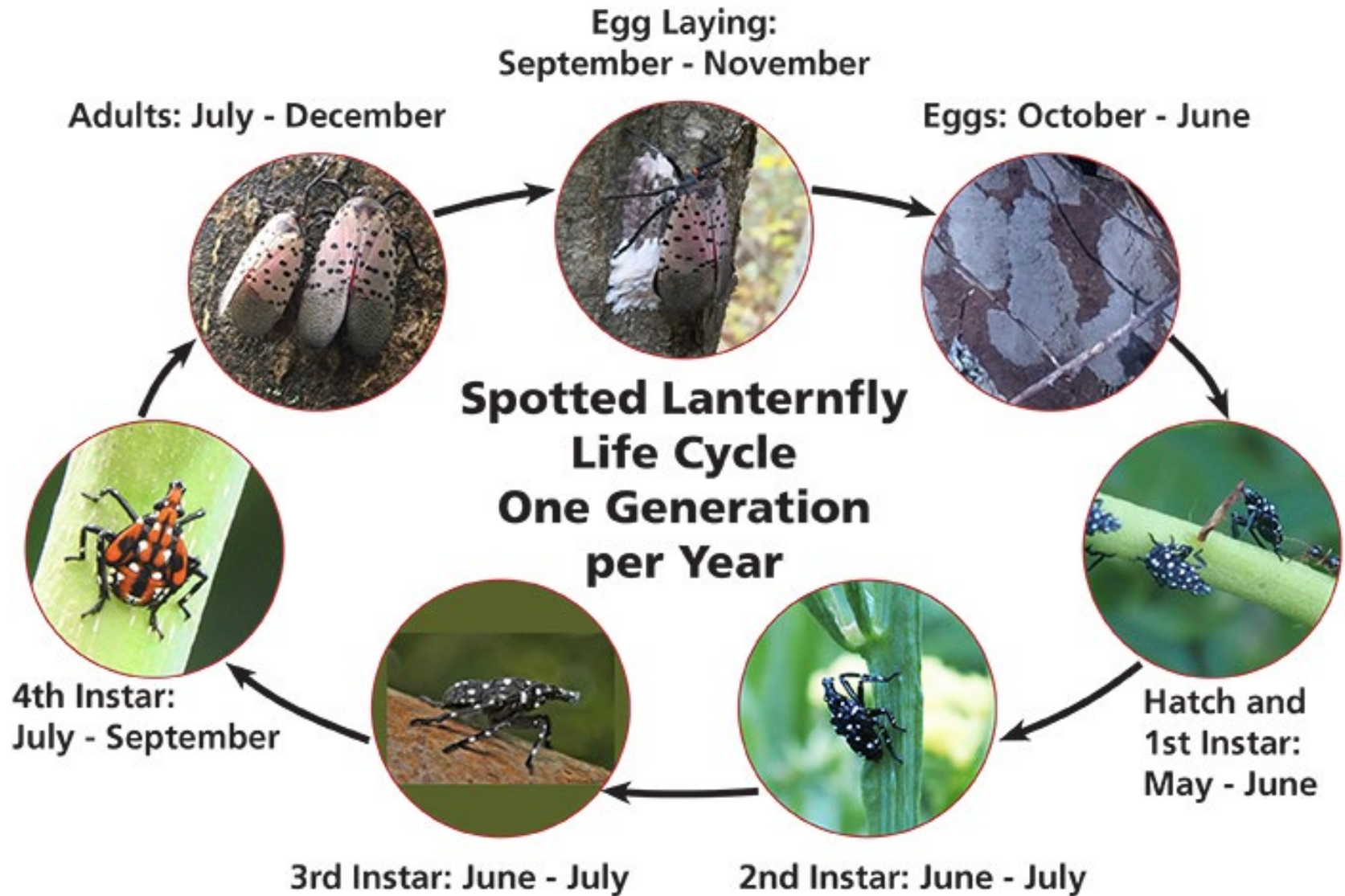
SPOTTED LANTERNFLY
★★★

<https://portal.ct.gov/-/media/CAES/CAPS/CAES-SLF-Management-Landscape-Professionals-Factsheet.pdf>

What is spotted lanternfly (SLF)?

- Not actually a fly.
- *Lycorma delicatula*, an invasive planthopper.
 - Sucking insect, feeds on phloem.
- Native to Asia.
- First detected in North America in 2014 in PA.
- Has since been found in 14 states, including CT, DE, IN, MD, MA, MI, NJ, NY, NC, OH, PA, RI, VA, and WV.

The Obligatory Life Cycle:



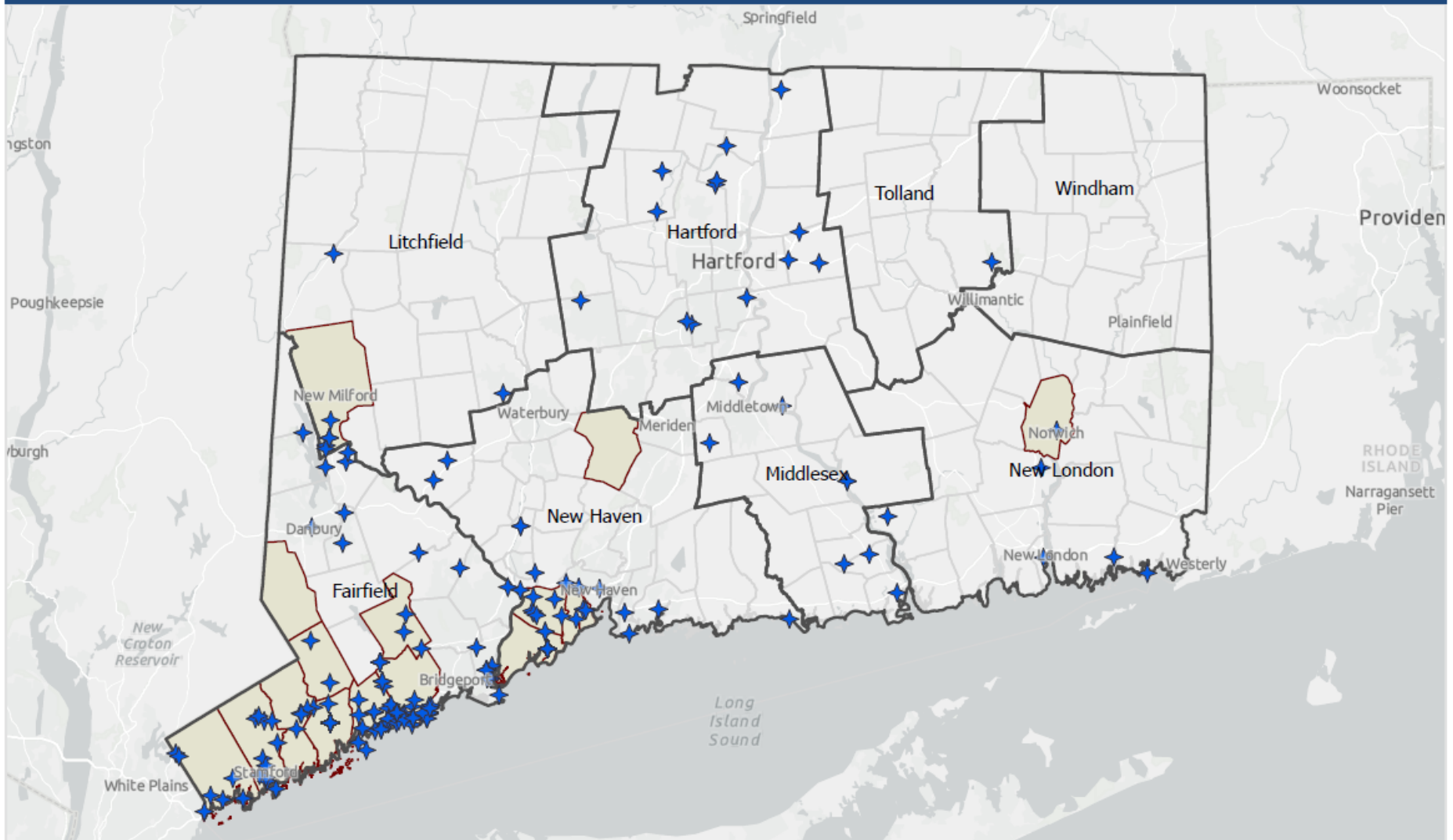
A Brief History of SLF in CT:

- **Single dead adult found in Farmington CT in 2018.**
- **CT resident photographed it at a gas station in Southbury CT in 2019.**
- **Then came 2020...when a number of populations were found.**
- **In 2021, emergency quarantine regulation for entire state.**

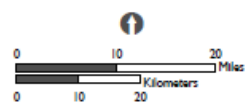


SLF Emergency Quarantine Extended in 2023 to Entire State

- **Assumption: SLF has probably overspread the state. Populations found in 5 of 8 counties (Fairfield, Hartford, Litchfield, New Haven, New London); reports from 7 of 8 counties (none from Windham).**
- **STS through use of compliance agreements for movement out of state.**
 - **Focus on nurseries and wood products.**
- **Public outreach for reporting.**



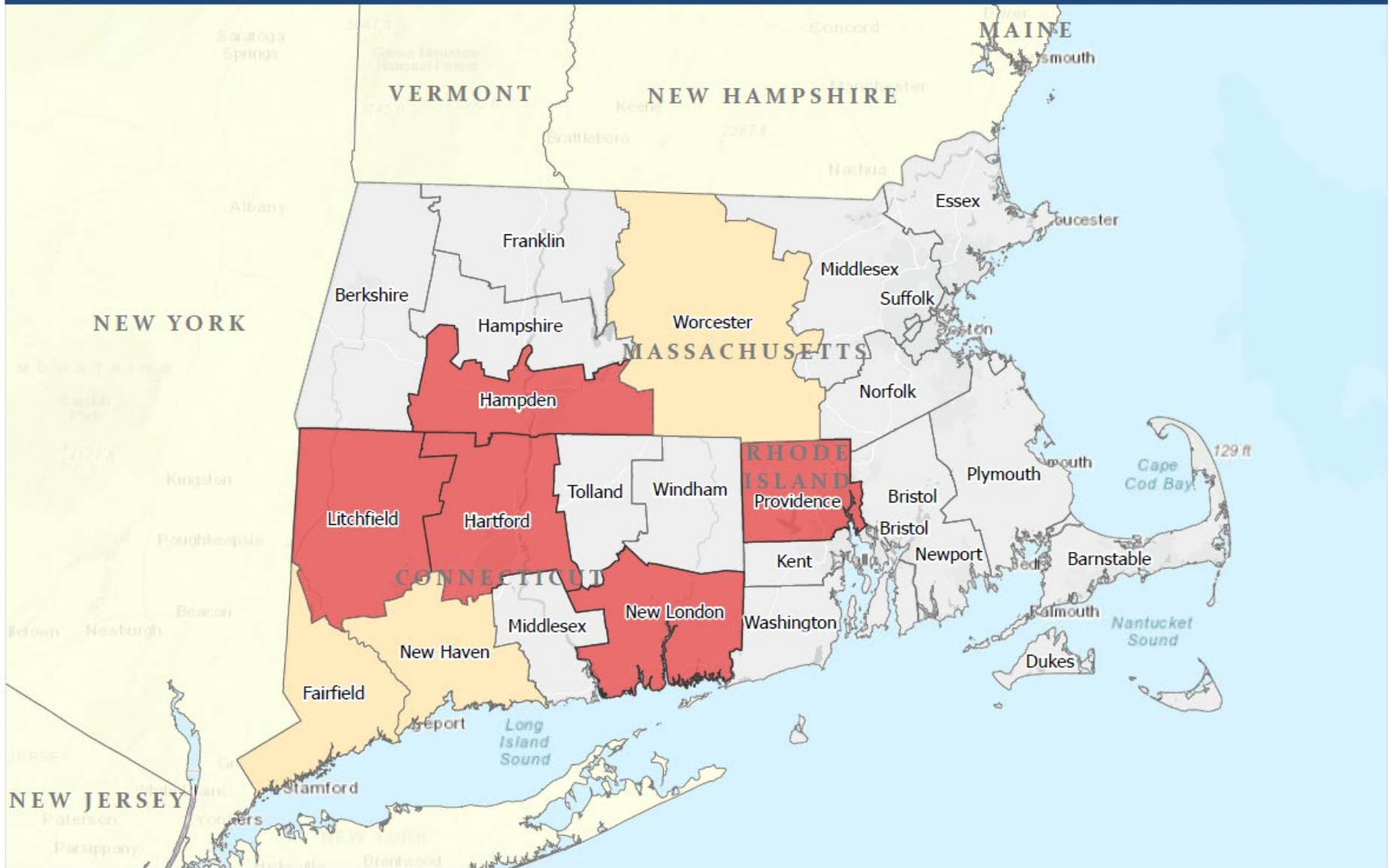
-  CT County Boundary
-  CT Town Boundary
-  CT SLF Quarantine Towns
-  CAES SLF Reports (9/27/2022)



Date Created:
 9/29/2022

USDA APHIS
 97 Barnes Rd
 Unit 20
 Wallingford, CT 06492

These data, and all the information contained therein, have been collected by the U.S. Department of Agriculture's Animal and Plant Health Inspection Service (APHIS), or by its cooperators on APHIS behalf, for restricted government purposes only and is the sole property of APHIS. See full disclaimer: <http://www.aphis.usda.gov/help/data-disclaimer>



- Previous SLF Counties
- 2022 SLF New Counties



Data Source:
list data source

Date Created:
1/17/2023

USDA, APHIS, PPQ
97 Barnes Rd.
Wallingford, CT

These data, and all the information contained therein, have been collected by the U.S. Department of Agriculture's Animal and Plant Health Inspection Service (APHIS), or by its cooperators on APHIS' behalf, for restricted government purposes only and is the sole property of APHIS. See full disclaimer here: aphis.usda.gov/help-map-disclaimer

STS how?

- **Over 50 reports from the CT Post Mall in Milford.**
- **Sheds (PA), an RV (VT), mums (DE), furniture (NJ), Amazon warehouse, Walgreens (VT), Metro North (aboard the train).**
- **Nursery stock (NJ).**
- **Fresh herbs, pumpkins.**
- **Gasoline tanker in New Haven Harbor.**



No presidential immunity to SLF...



Thanks to:

- **Inspectors: Tia Blevins, Mark Creighton, Jeff Fengler**
- **State Survey Coordinator: Dana Crandall**
- **Intrepid Pilots: Civil Air Patrol CT ANG Wing**
- **Our Friendly Neighborhood PPQ and CBP People**

*The
Connecticut
Agricultural
Experiment
Station*



FOUNDED 1875

