

2022 Connecticut Acorn Mast Survey Results

Down, but nut out!



Hello



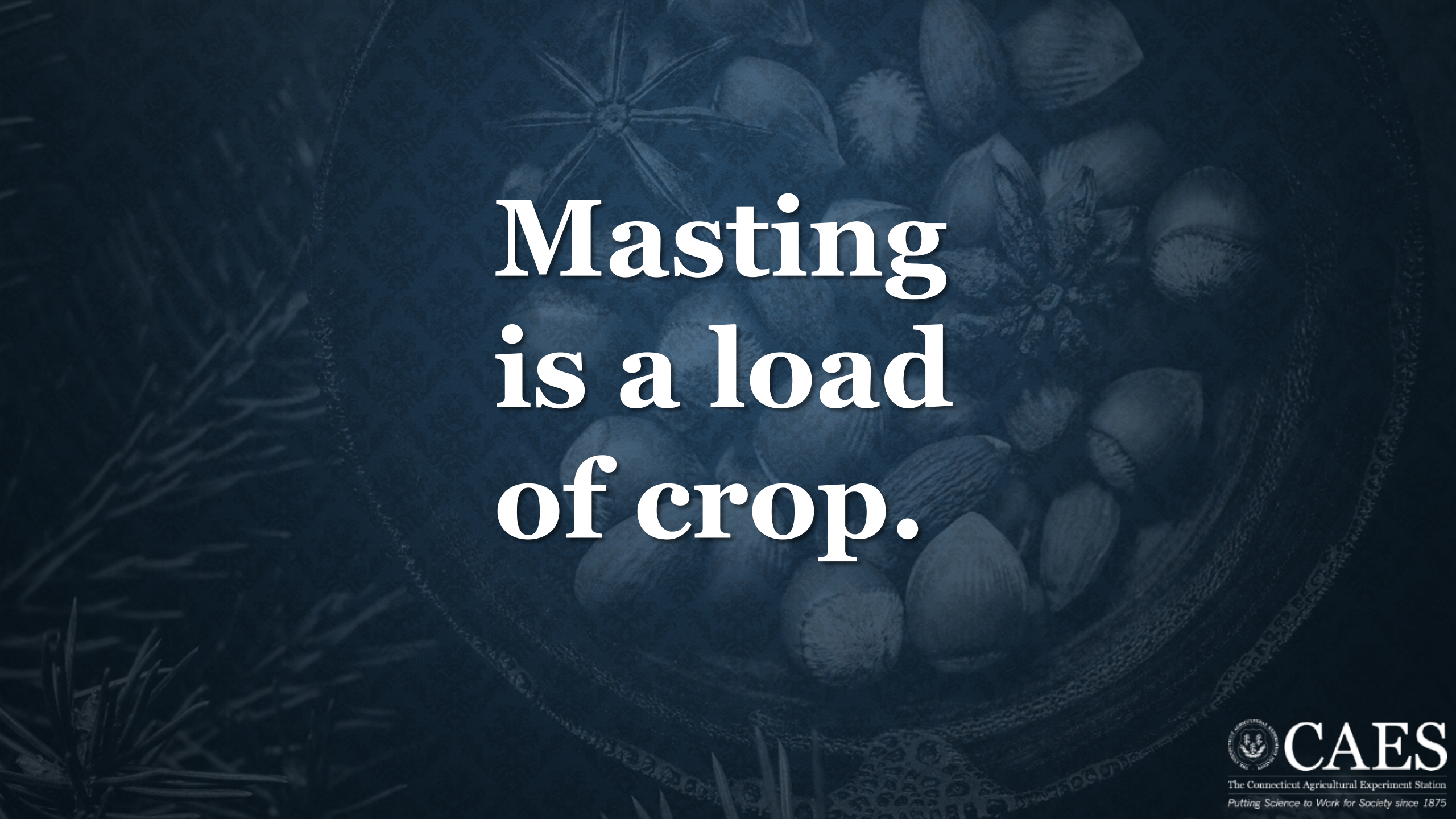
CAES

The Connecticut Agricultural Experiment Station

Putting Science to Work for Society since 1875

Treevia Time!

- **How many native oak species are found in our forests?**
- **Bonus: How many are special concern/threatened/endangered?**



**Masting
is a load
of crop.**

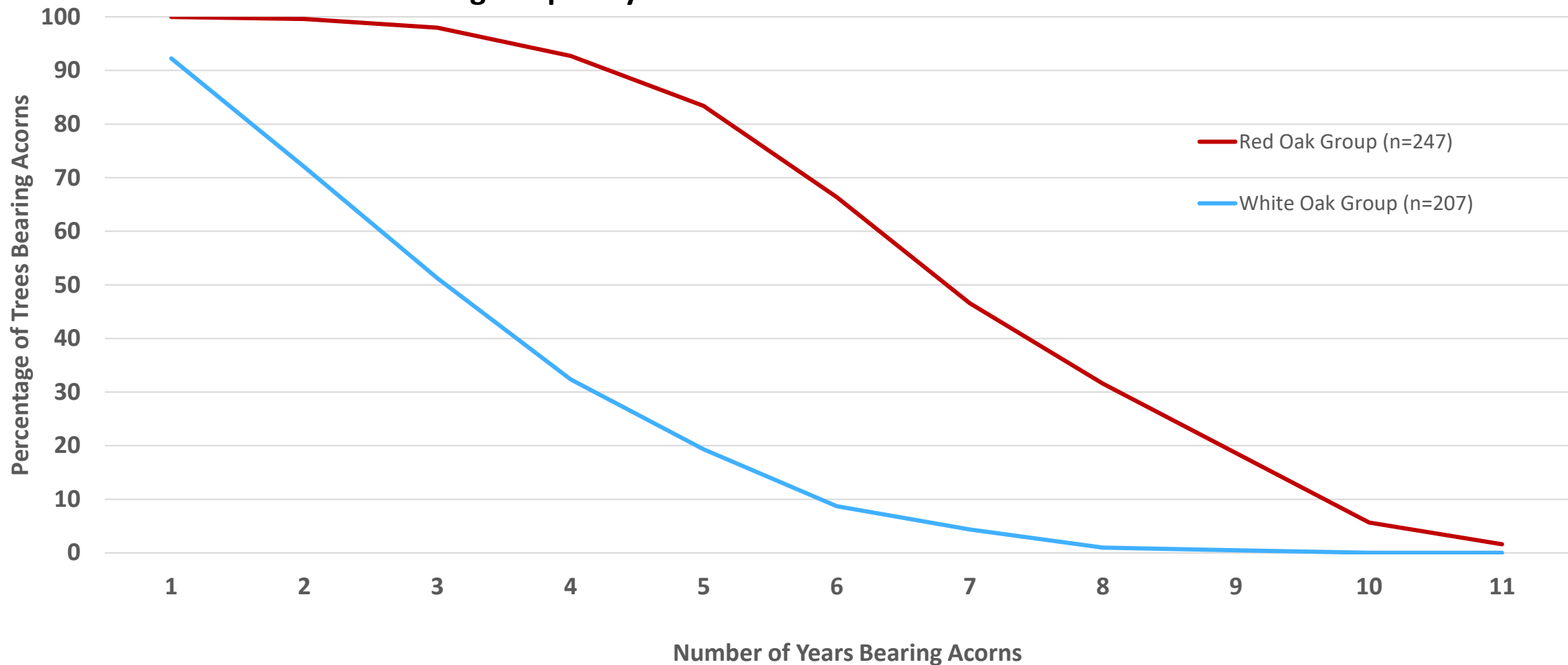


CAES

The Connecticut Agricultural Experiment Station

Putting Science to Work for Society since 1875

Fruiting Frequency at Twelve Locations Across Connecticut



CAES

The Connecticut Agricultural Experiment Station

Putting Science to Work for Society since 1875

Why do we care?

- **Oaks are a foundational species**
- **They drive ecological processes**
- **411 for land/wildlife managers and hunters**
- **Supports a \$5 Billion US industry**



Greetings from Connecticut!

- Scantic River State Park
- Yale-Myers
- Belding WMA
- Housatonic Meadows
- Sessions Woods WMA
- Franklin WMA
- Hurd State Park
- Cockaponsett State Forest
- Barn Island WMA
- Sleeping Giant State Park
- Aldo Leopold WMA
- Huntington State Park



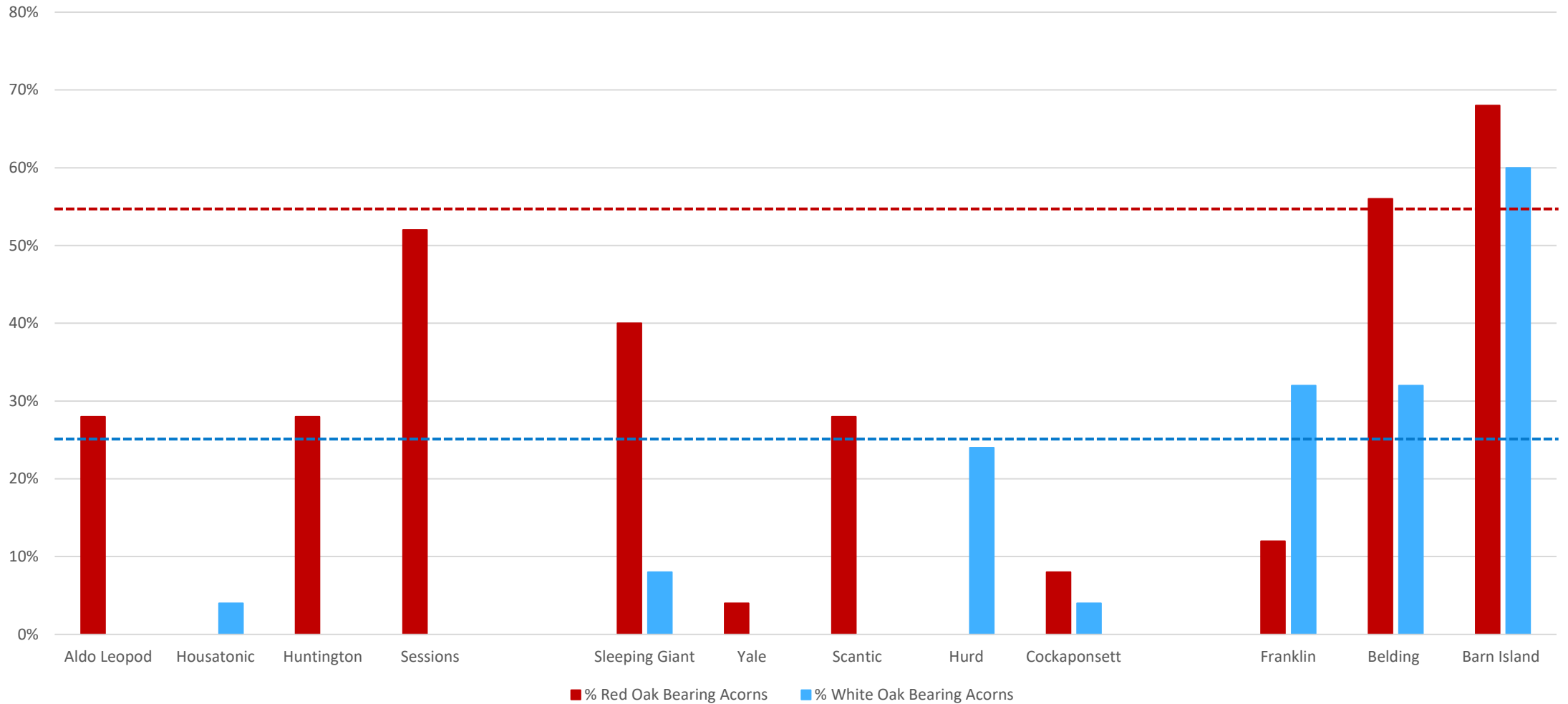
CAES

The Connecticut Agricultural Experiment Station
Putting Science to Work for Society since 1875

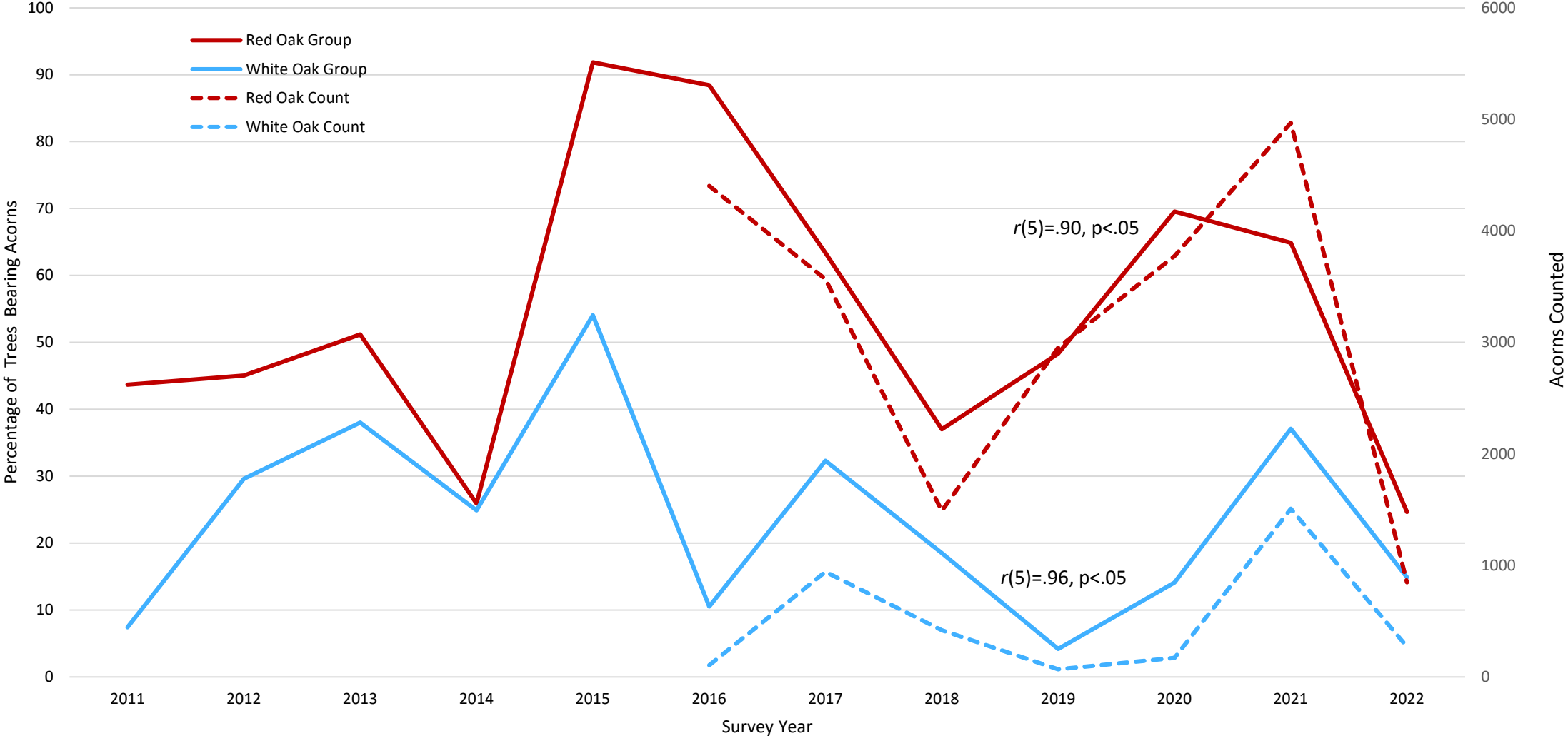
Methodology

- **Region-wide effort**
- **Occurring for last 16 years**
- **August sore-neck challenge**

2022 Statewide Results



Acorn Mast Abundance Across Twelve Sites in Connecticut



Take Home Messages

- **Acorn production is variable across CT and YOY.**
- **Abiotic and biotic factors influence production**
- **Thank You MAG!**

Answers

- 12- *Quercus alba* (white), *bicolor* (swamp white), *montana* (chestnut), *prinoides* (dwarf chestnut), *muehlenbergii* (chinquapin), *stellata* (post), *macrocarpa* (bur) , *rubra* (northern red), *coccinea* (scarlet), *velutina* (black), *palustris* (pin), *ilicifolia* (bear)
- 1- *Q. macrocarpa*