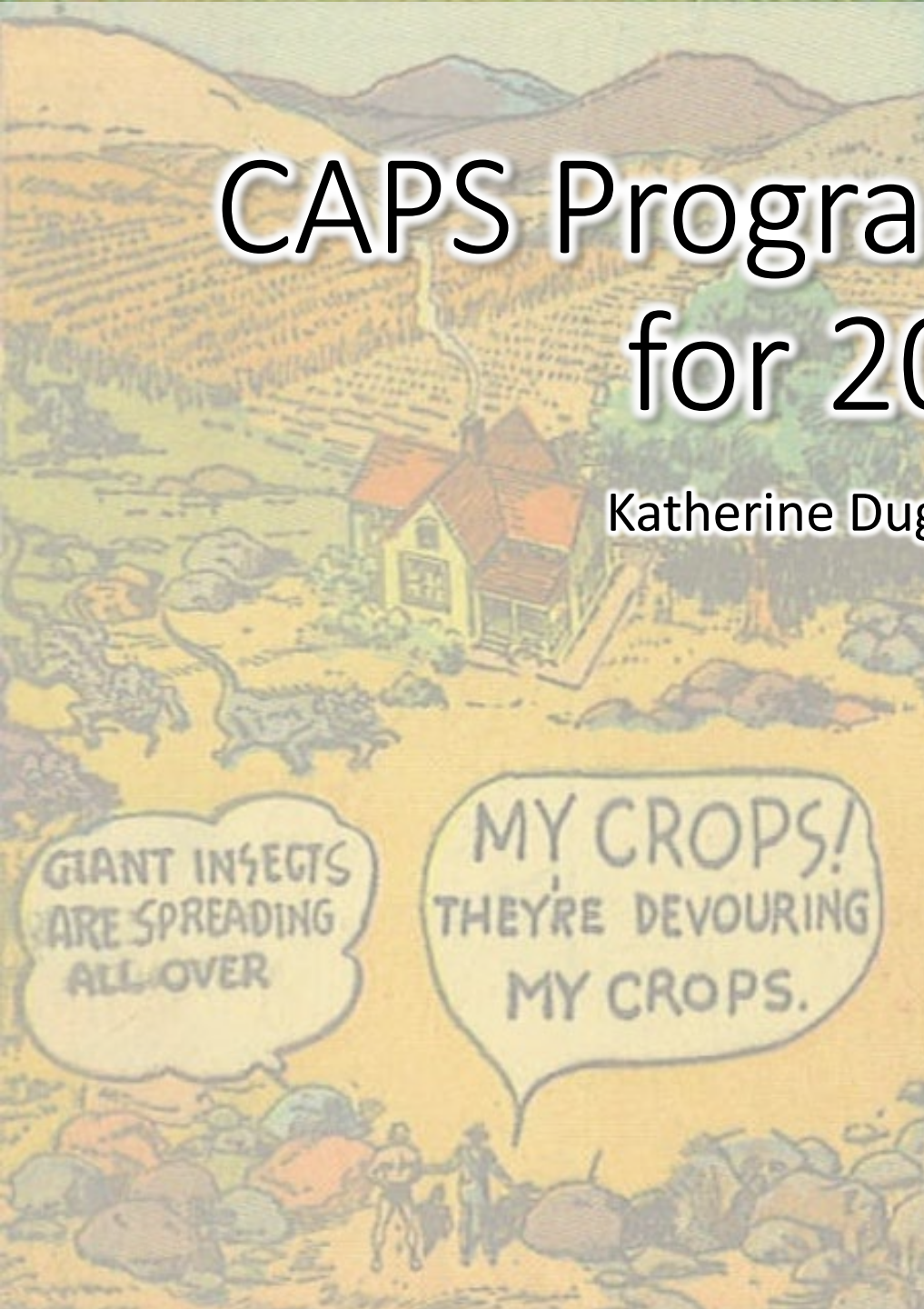


CAPS Program: Targets for 2019

Katherine Dugas, CAES



Overview

- 2018 CAPS and Farm Bill Survey Summaries
- 2019 CAPS and Plant Protection Act Survey Plans



We're gonna
need a bigger
wing trap...



CAES

The Connecticut Agricultural Experiment Station
Putting Science to Work for Society since 1875

CAPS Program



- Cooperative Agricultural Pest Survey
- Joint effort between US Department of Agriculture(USDA)'s Animal and Plant Health Inspection Service (APHIS) Plant Protection and Quarantine (PPQ) and state cooperators
- Purpose is to detect new exotic plant pests, maintain a pest information database, and conduct outreach
 - protecting agriculture and natural resources from economic and environmental damage



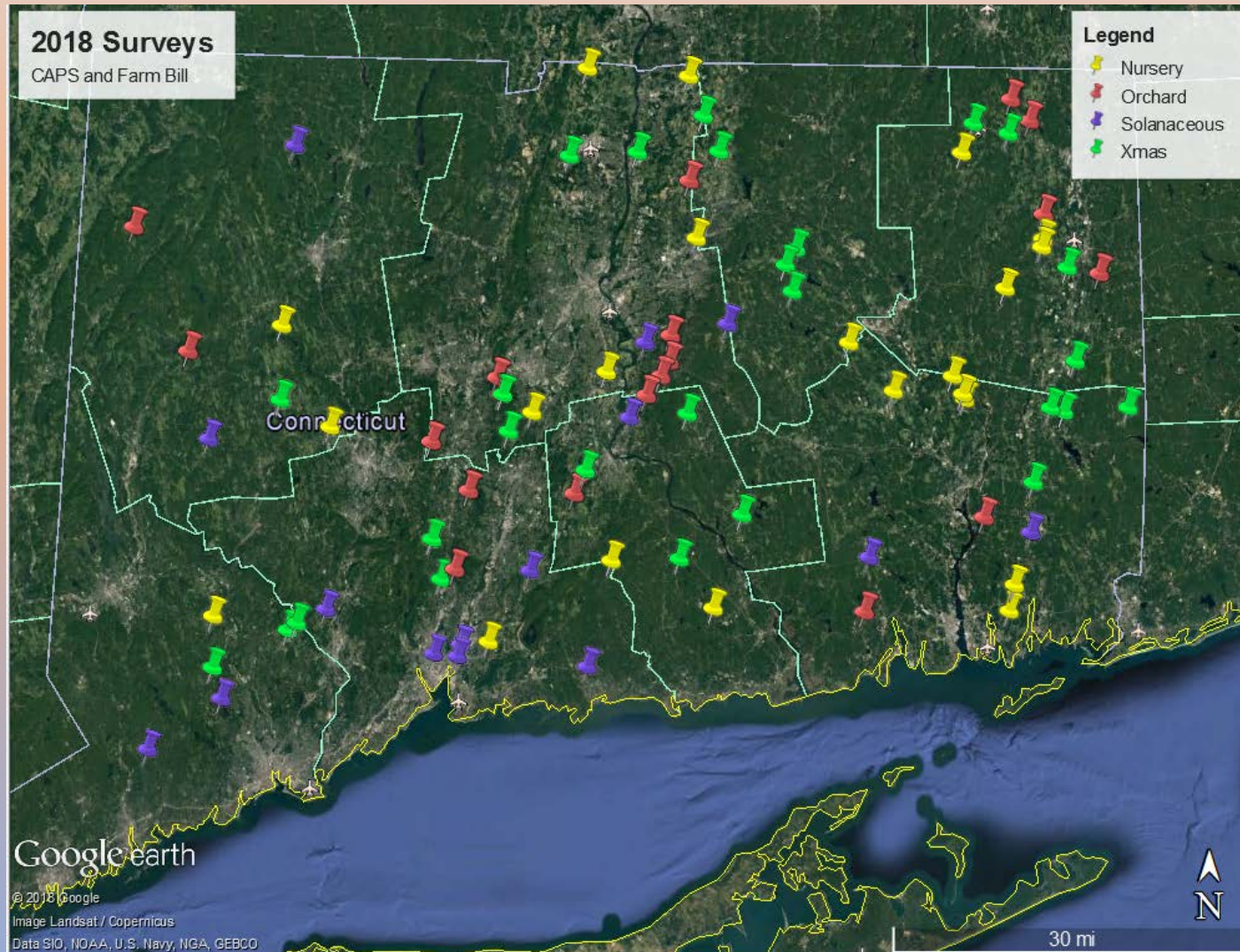
CAES

The Connecticut Agricultural Experiment Station
Putting Science to Work for Society since 1875

Farm Bill/Plant Protection Act

- Separate source of funding from CAPS
- Formerly known as Section 10007 of the Farm Bill. As of FY 2019, it is now known as the Plant Protection Act §7721, PPA 7721 for short.
- Utilizes existing CAPS infrastructure to conduct additional pest surveys
- In FY 2018, \$70 million supported 494 projects in 49 states, Guam and Puerto Rico
- “These projects prevent the introduction or spread of invasive plant pests and diseases that threaten U.S. agriculture and the environment, as well as ensure the availability of a healthy supply of clean plant stock in the United States.”

2018 Survey Summaries



2018 CAPS Survey

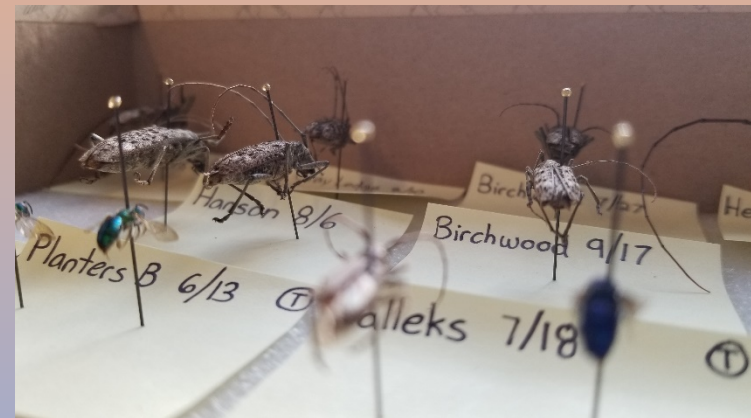
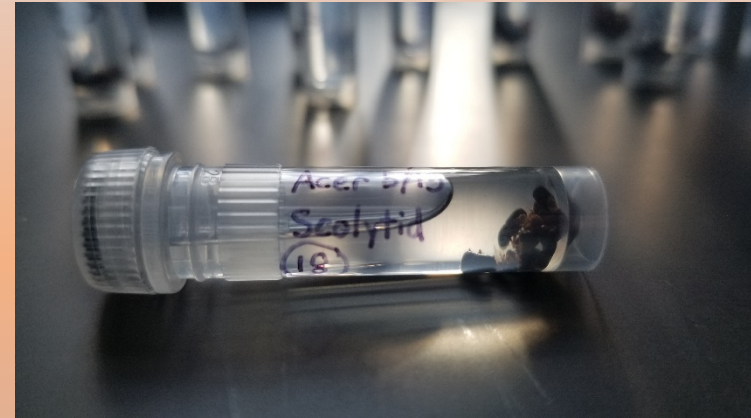
- Nursery Survey– 25 sites
 - green oak tortrix moth, *Tortrix viridana*
 - variegated golden tortrix moth, *Archips xylosteanus*
 - oak processionary moth, *Thaumetopoea processionea*
 - European hardwood ambrosia beetle, *Trypodendron domesticum*
 - Oak ambrosia beetle, *Platypus quercivorus*
 - Plus 1 general scolytid trap
- Christmas tree survey – 25 sites
 - brown spruce longhorned beetle, *Tetropium fuscum*
 - black spruce beetle, *Tetropium castaneum*
 - black fir sawyer, *Monochamus urussovii*
 - Japanese pine sawyer, *Monochamus alternatus*
 - large pine weevil, *Hylobius abletis*
 - Pine processionary moth, *Thaumetopoea pityocampa*
 - ~~Siberian silk moth, *Dendrolimus pini*~~
 - ~~Pine tree lappet, *Dendrolimus sibiricus*~~



CAES

2018 CAPS Survey

- Bark Beetles:
 - 4,991 total Scolytids collected + screened
- Longhorned Beetles:
 - 659 total Cerambycids collected + screened
 - 378 of which were *Monochamus scutellatus*, white spotted sawyer (native)
- Weevils:
 - 131 weevils collected + screened
- Moths:
 - 304 GOTM and OPM traps collected and screened
 - 183 PPM traps collected and screened
- NO SUSPECTS



2018 Farm Bill Orchard Survey

- Insects:

- light brown apple moth, *Epiphyas postvittana*
- summer fruit tortrix moth, *Adoxophyes orana*
- variegated golden tortrix moth, *Archips xylosteanus*
- pear leaf blister moth, *Leucoptera malifoliella*
- cabbage moth, *Mamestra brassicae*

- 20 sites



2018 Farm Bill Orchard Survey

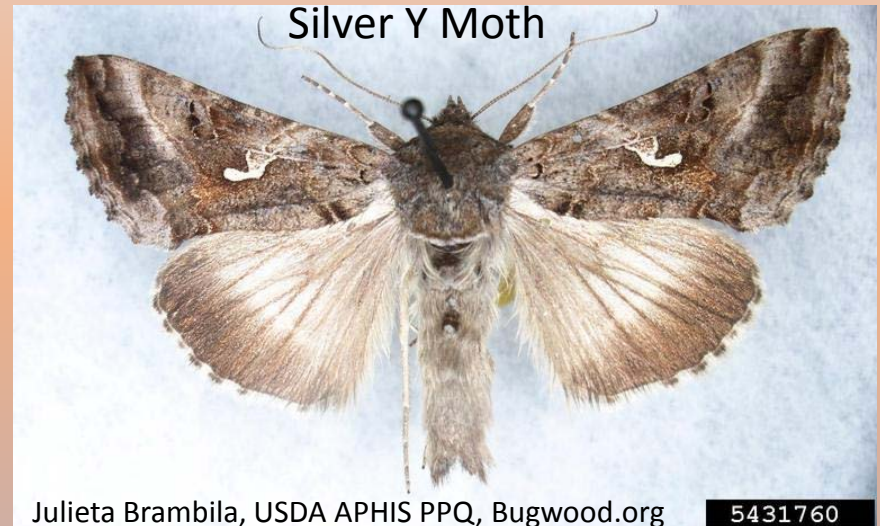
- LBAM:
 - 89 traps collected + screened
- SFTM:
 - 84 traps collected + screened
- VGTM:
 - 90 traps collected + screened
- PLBM:
 - 82 traps collected + screened
- CBTM:
 - 88 traps collected + screened
- No suspects found, SLF visual survey negative

2018 Farm Bill Solanaceous Survey

- Insects:

- silver Y moth,
Autographa gamma
- golden twinstot,
Chrysodeixis chalcites
- old world bollworm,
Helicoverpa armigera
- tomato fruit borer,
Neoleucinodes elegantalis
- Egyptian cottonworm,
Spodoptera littoralis
- cotton cutworm,
Spodoptera litura
- tomato leafminer,
Tuta absoluta

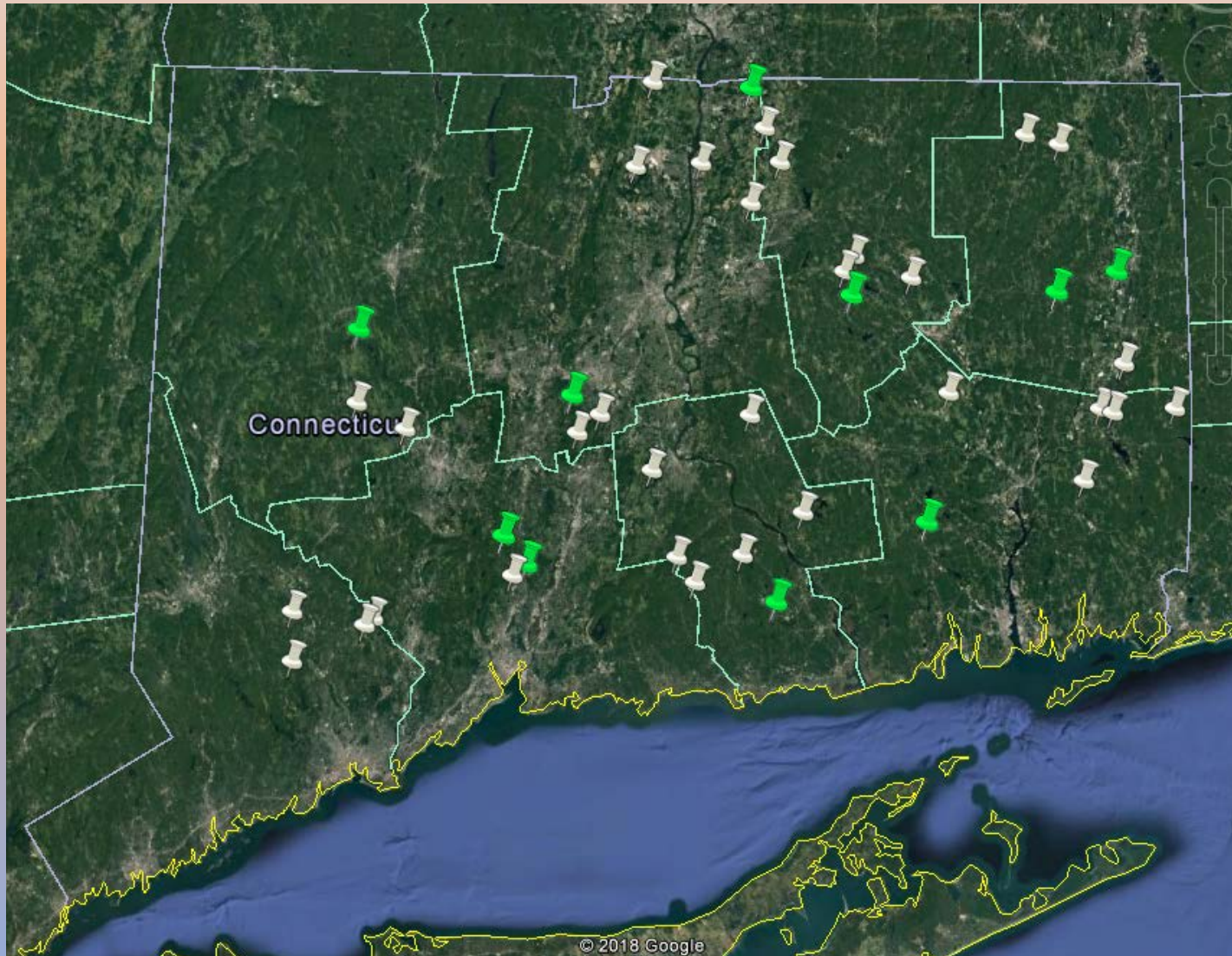
- 20 sites



2018 Farm Bill Solanaceous Survey

- SYM:
 - 56 traps collected + screened
 - 40 suspects sent to Cornell for dissection – no targets found
- GTS:
 - 58 traps collected + screened
- OWB:
 - 49 traps collected + screened
 - 130 suspects sent to Cornell for dissection – no targets found
- TFB:
 - 63 traps collected + screened
- ECW:
 - 50 traps collected + screened
- CCW:
 - 53 traps collected + screened
- TLM:
 - 65 traps collected + screened
- NO TARGETS FOUND

2019 Survey Plans





2019 CAPS Survey



Milan Zubrik, Forest Research Institute - Slovakia, Bugwood.org

- Nursery Survey– 50 sites
 - Sixtoothed bark beetle, *Ips sexdentatus*
 - European spruce bark beetle, *Ips typographus*
 - large pine weevil, *Hylobius abletis*
 - Mediterranean pine shoot beetle, *Tomicus destruens*
 - green oak tortrix moth, *Tortrix viridana*
 - oak processionary moth, *Thaumetopoea processionea*
 - Pine processionary moth, *Thaumetopoea pityocampa*
 - Siberian silk moth, *Dendrolimus pini*
 - Pine tree lappet, *Dendrolimus sibiricus*
 - Masson pine moth, *Dendrolimus punctatus*



CAES

The Connecticut Agricultural Experiment Station
Putting Science to Work for Society since 1875

2019 PPA Grape Survey

- Insects:

- European grapevine moth, *Lobesia botrana*
- European grape berry moth, *Eupoecilia ambiguella*
- Christmas berry webworm, *Cryptoblabes gnidella*
- spotted lanternfly, *Lycorma delicatula*
- curcurbit beetle, *Diabrotica speciosa*
- black maize beetle, *Heteronychus arator*

- 3 Phytoplasmas, *australiense*, *solani*, *vitis*



NAPIS and Pest Tracker

- <http://pest.ceris.purdue.edu/>
- Contains information on past and present CAPS surveys, searchable by state and by pest

Thank You!

- USDA APHIS PPQ – Kate Aitkenhead, Nichole Carrier, and Chuck Baker
- CAES – Vicki Smith, Tia Blevins, Jeff Fengler, Zack Brown, and Adam Cohen
- UConn – Donna Ellis, Linda Dunscomb, Nicole Gabelman, Jude Hsaing, and Jennifer Dacey
- All the CT farmers/growers/landowners who have generously provided us with permission to trap on their properties!



CAES

The Connecticut Agricultural Experiment Station

Putting Science to Work for Society since 1875