

CAPS Survey Targets for 2017

Katherine Dugas, CAES



CAES

The Connecticut Agricultural Experiment Station

Putting Science to Work for Society since 1875

Overview

- 2016 CAPS and Farm Bill Survey Summaries
- 2017 CAPS and Farm Bill Survey Plans



We're gonna
need a bigger
wing trap...



CAES

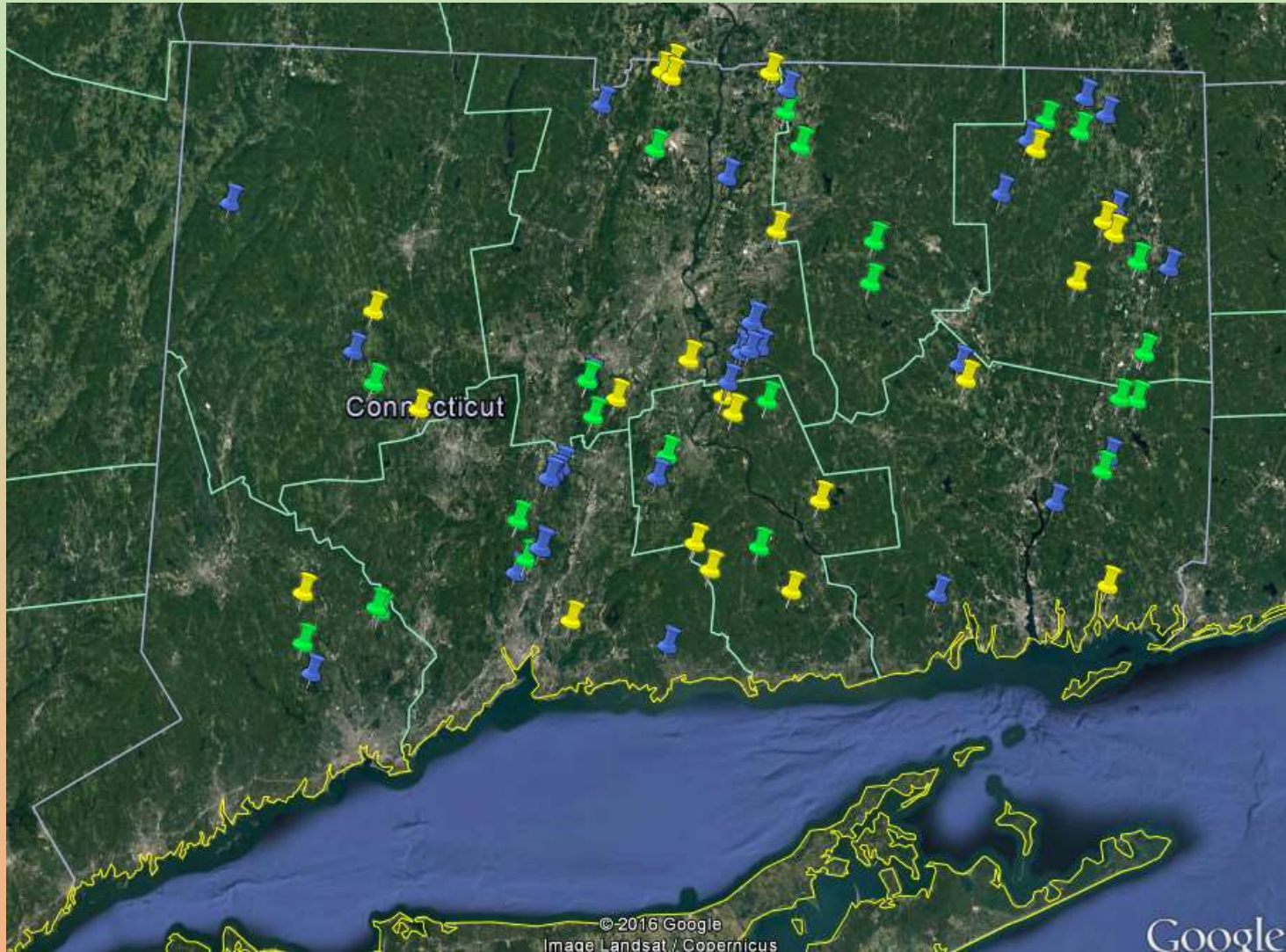
The Connecticut Agricultural Experiment Station
Putting Science to Work for Society since 1875

CAPS Program

- Cooperative Agricultural Pest Survey
- Joint effort between US Department of Agriculture(USDA)'s Animal and Plant Health Inspection Service (APHIS) Plant Protection and Quarantine (PPQ) and state cooperators
- Purpose is to detect new exotic plant pests, maintain a pest information database, and conduct outreach
 - protecting agriculture and natural resources from economic and environmental damage



2016 Survey Summaries



2016 CAPS Survey Summary

- Oak/maple survey – 26 sites
 - green oak tortrix moth, *Tortrix viridana*
 - variegated golden tortrix moth, *Archips xylosteanus*
 - oak processionary moth, *Thaumetopoea processionea*
 - false codling moth, *Thaumatotibia leucotreta*
- Christmas tree survey – 25 sites
 - black fir sawyer, *Monochamus urussovii*
 - Japanese pine sawyer, *Monochamus alternatus*
- *Cerceris* survey – 80 sites
 - oak splendor beetle, *Agrilus biguttatus*
 - goldspotted oak borer, *Agrilus coxalis*
 - jewel beetle, *Agrilus sulcicollis*
 - emerald ash borer is now in all CT counties



2016 Farm Bill Orchard Survey

- Insects:

- light brown apple moth, *Epiphyas postvittana*
- summer fruit tortrix moth, *Adoxophyes orana*



- variegated golden tortrix moth, *Archips xylosteanus*

- Phytoplasmas:

- European stone fruit yellows, *Candidatus Phytoplasma prunorum*
- apple proliferation, *Candidatus Phytoplasma mali*

- 25 Sites

2016 Farm Bill Mixed Berry Survey

- Insects:

- *Epiphyas postvittana*, light brown apple moth (target hosts – blueberry, strawberry, currant, raspberry, blackberry)
- *Adoxophyes orana*, summer fruit tortrix moth (target hosts – blueberry, strawberry, currant, raspberry, blackberry)
- *Archips xylosteanus*, variegated golden tortrix moth (target hosts – currant, raspberry, blackberry)
- *Cryptoblabes gnidiella*, honeydew moth (target hosts – blueberry)
- *Lobesia botrana*, European grapevine moth (target hosts – currant, raspberry, blackberry)

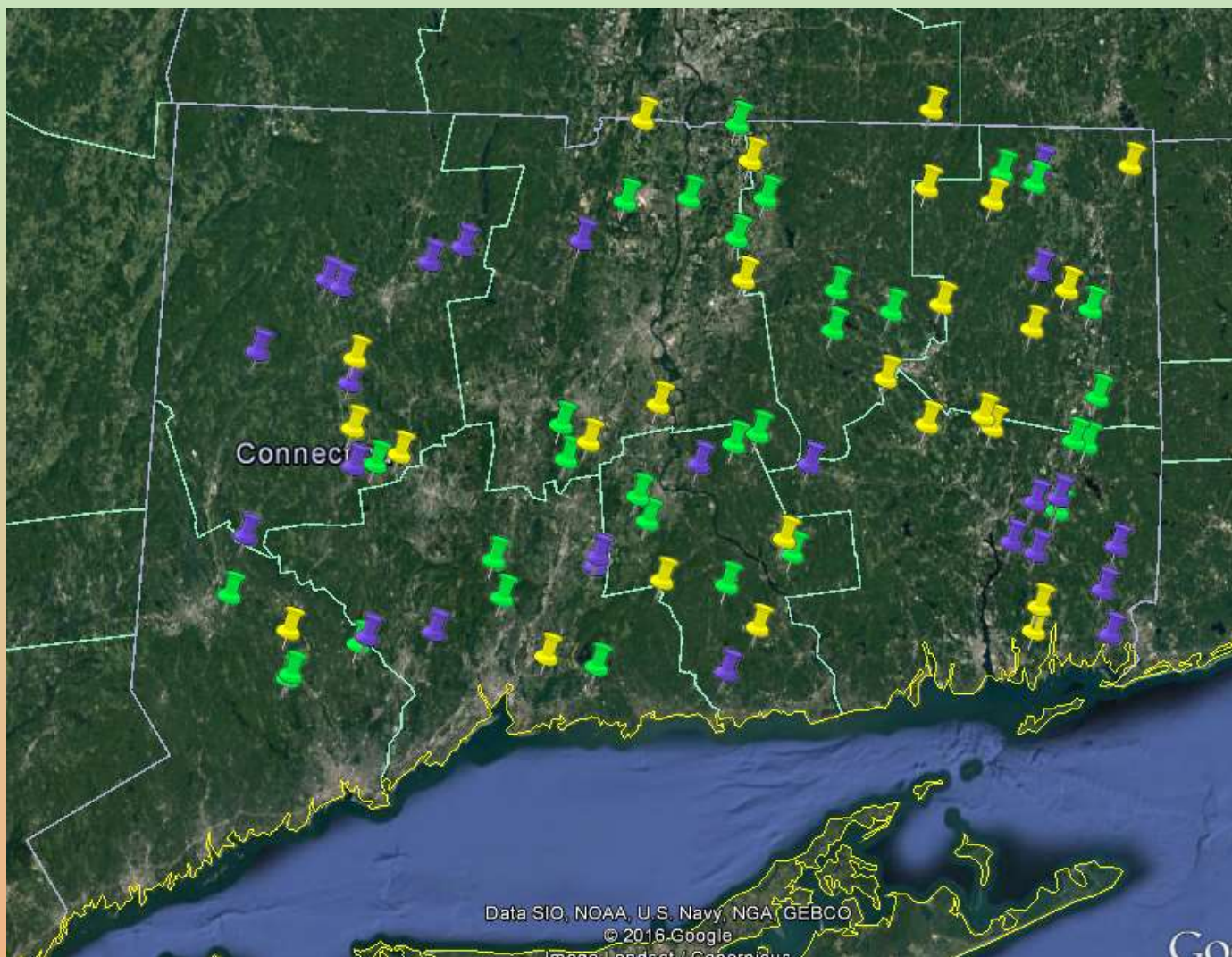


- Phytoplasma:

- Australian grapevine yellows, *Phytoplasma australiense*

- 25 Sites

2017 Survey Plans



2017 CAPS Survey

- Oak/Maple Survey– 25 sites
 - green oak tortrix moth, *Tortrix viridana*
 - variegated golden tortrix moth, *Archips xylosteanus*
 - oak processionary moth, *Thaumetopoea processionea*
 - cabbage moth, *Mamestra brassicae*
- Christmas tree survey – 25 sites
 - brown spruce longhorned beetle, *Tetropium fuscum*
 - black spruce beetle, *Tetropium castaneum*
 - black fir sawyer, *Monochamus urussovii*
 - Japanese pine sawyer, *Monochamus alternatus*
 - large pine weevil, *Hylobius abletis*
- Exotic woodborer/bark beetle survey – 25 sites
 - European hardwood ambrosia beetle, *Trypodendron domesticum*
 - Oak ambrosia beetle, *Platypus quercivorus*



2017 Farm Bill Grape Survey

- Insects:

- light brown apple moth, *Epiphyas postvittana*
- European grapevine moth, *Lobesia botrana*
- European grape berry moth, *Eupoecilia ambiguella*
- summer fruit tortrix moth, *Adoxophyes orana*
- Christmas berry webworm, *Cryptoblabes gnidella*
- spotted lanternfly, *Lycorma delicatula*
- curcubit beetle, *Diabrotica speciosa*

- 20 vineyard sites



2016 - 2017 Farm Bill *P. ramorum* Survey

- A continuation of the 2016 survey due to dry conditions last year
- 25 Nursery sites



2017 *Cerceris* Biosurveillance

- In 2017, *Cerceris* biosurveillance will be included as part of the 2017 Forest Pest Outreach program.
- ~ 80 sites
 - oak splendor beetle, *Agrilus biguttatus*
 - goldspotted oak borer, *Agrilus coaxlis*
 - jewel beetle, *Agrilus sulcicollis*
 - emerald ash borer will continue to be surveyed and new positive towns added to map



NAPIS and Pest Tracker

- <http://pest.ceris.purdue.edu/>
- Contains information on past and present CAPS surveys, searchable by state and by pest

Pest Tracker
Exotic Pest Reporting

Search Pests / States:

Home

Search

Pests & Maps

States

Directories

Partners

Contact Us

Found Something?

HELP STOP EXOTIC PESTS

DON'T PACK A PEST

*Stopping exotic
invaders is a
community effort.*



COOPERATION LEADS TO SUCCESS



The [European Grapevine Moth](#) may have been accidentally introduced when grape wood was smuggled into the country. It spread to California wine producing counties. California Department of Food and Agriculture

PEST WATCH



Silver Y Moth - *Autographa gamma*

This pest presents a significant threat to food or forest plants. Click the photo to learn more about this exotic pest.

Thank You!

- USDA APHIS PPQ – Kate Aitkenhead and Nichole Carrier
- CAES – Vicki Smith, Tia Blevins, Jeff Fengler and Zack Brown
- UConn – Donna Ellis and Alejandro Chiriboga
- All the volunteer farmers, growers, and landowners that have generously provided trapping sites!

An average day surveying for invasives...

