

Species of Chestnuts

Sandra Anagnostakis

Emeritus

The Connecticut Agricultural Experiment Station

New Haven, Connecticut

06/16/2015

Form of Mature Trees

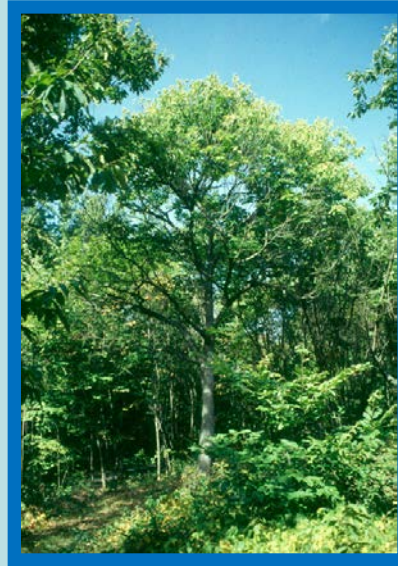
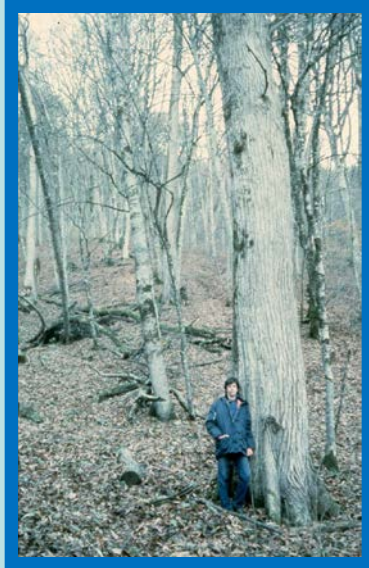


C. dentata
1905

C. sequinii



C. sativa
Photo by
F. L. Paillet
in the
Caucasus
Mountains



C. mollissima



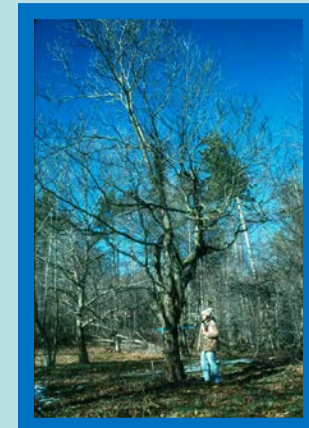
C. crenata



C. pumila



C. ozarkensis



C. henryi

Dormant Stems



C. dentata



C. seguinii



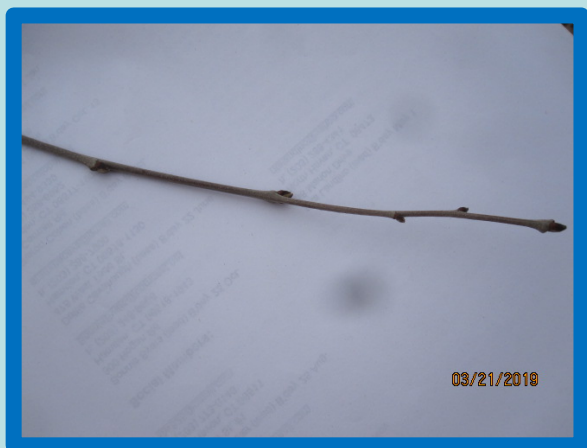
C. mollissima



C. sativa



C. crenata



C. ozarkensis

C. pumila



Stipules



C. dentata



C. mollissima

C. sequinii



C. sativa



C. crenata



Stipules



C. ozarkensis



C. henryi



C. pumila

Leaves



C. dentata



C. sequinii



C. mollissima



C. crenata



C. sativa



C. pumila



C. ozarkensis



C. henryi

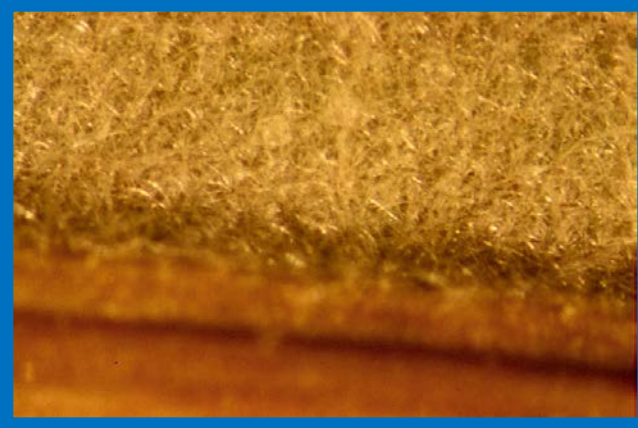
Lower Leaf Surface



C. dentata



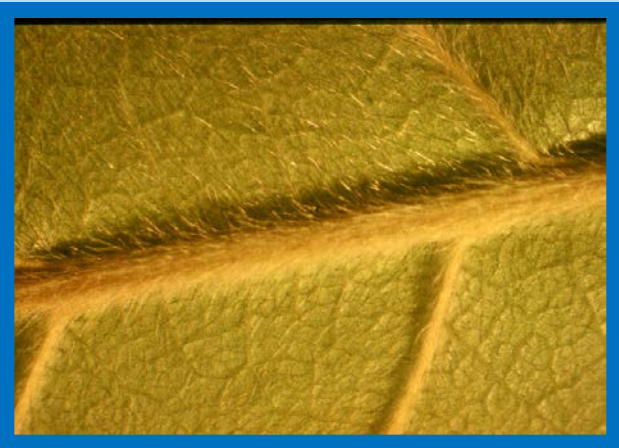
C. seguinii



C. mollissima



C. crenata



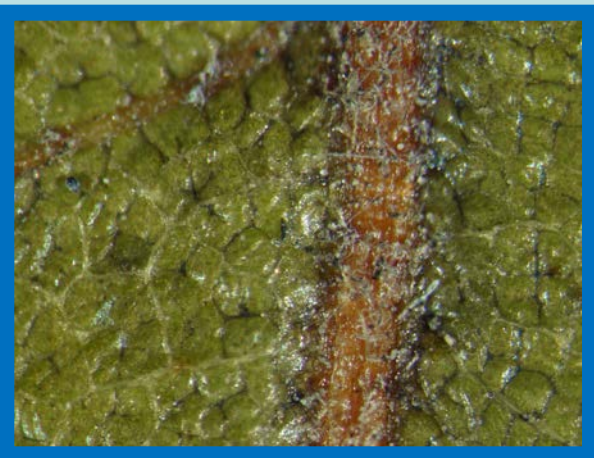
C. sativa



C. ozarkensis



C. henryi



C. pumila

Bur Placement



C. dentata

C. seguinii



C. mollissima



C. sativa

C. crenata



C. pumila



C. ozarkensis



C. henryi

Burs



C. dentata



C. seguinii



C. mollissima



C. sativa



C. crenata



C. pumila



C. ozarkensis

Nuts



C. dentata



C. crenata



C. ozarkensis



C. mollissima
'Gideon'



'Lockwood'



'Little Giant'