



Special Meeting on the MPO Study Required by SA 23-13

Jeff Kramer

Center for Urban Transportation Research
University of South Florida

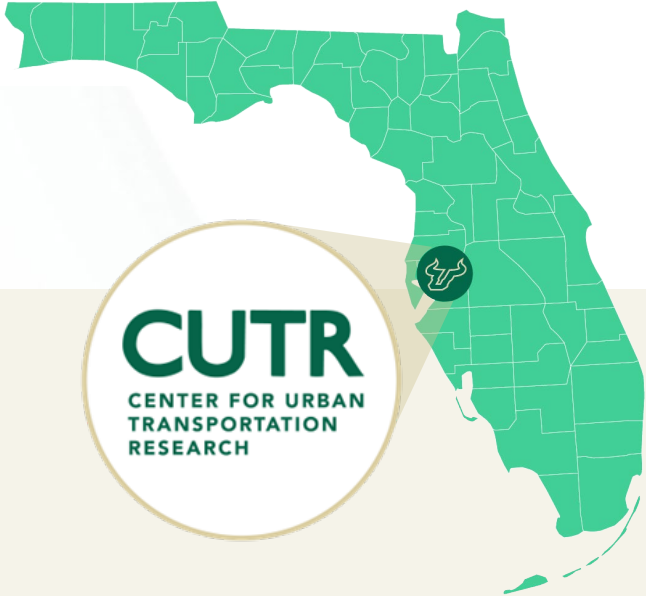
CT Advisory Commission on Intergovernmental Relations | Nov 14, 2023



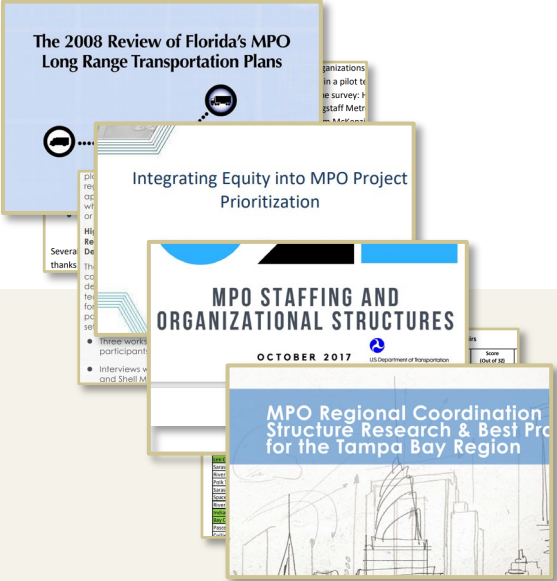
About me – Jeff Kramer, AICP



Program Director of TP3
(Transportation Planning,
Processes, and Programs)

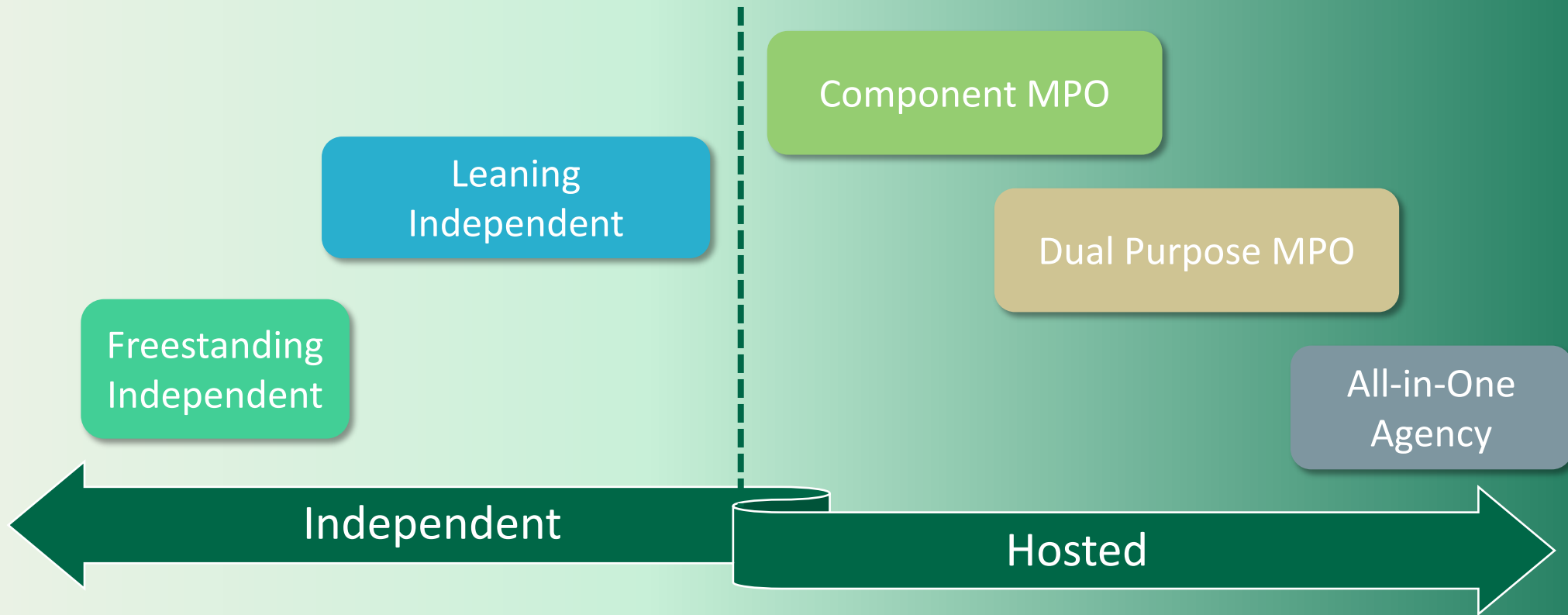


Center for Urban Transportation
Research (CUTR) at the University of
South Florida (USF)



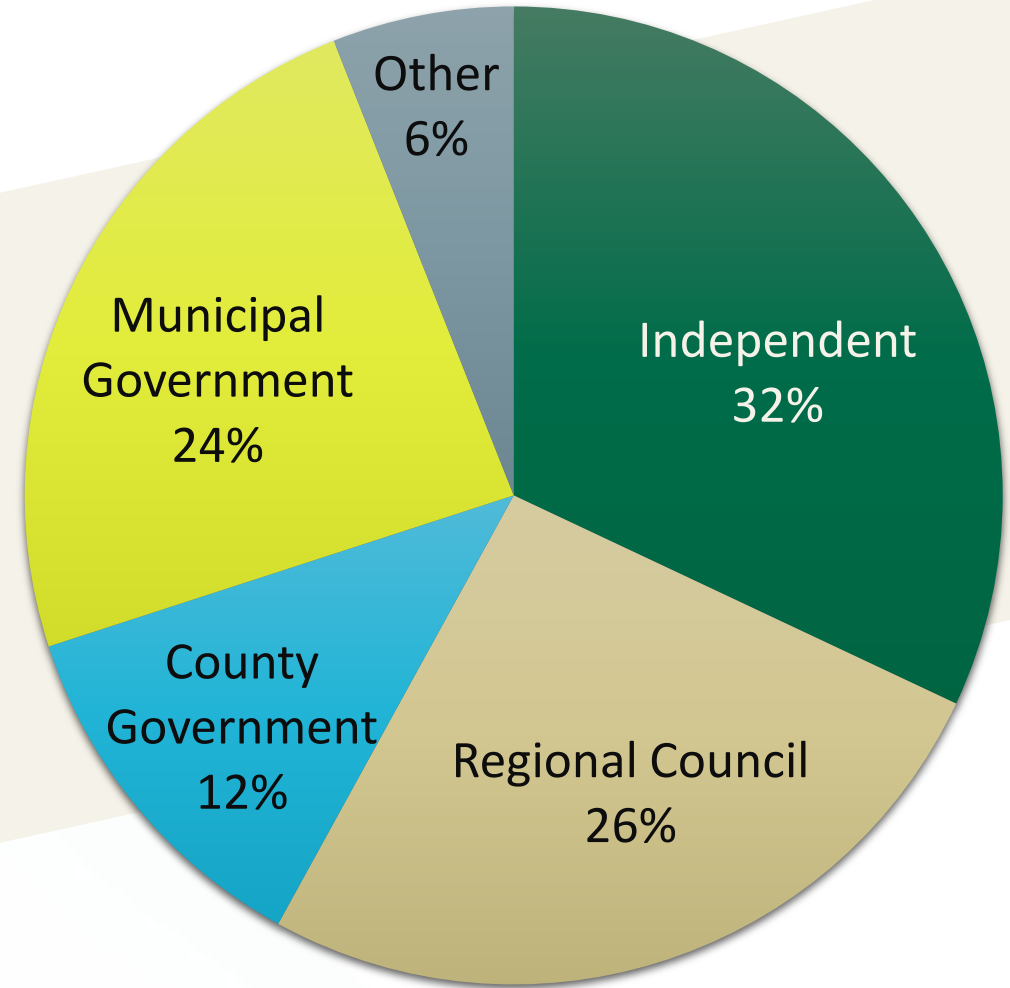
Involved in MPO
related research for
nearly 25 years

MPO Hosting Continuum



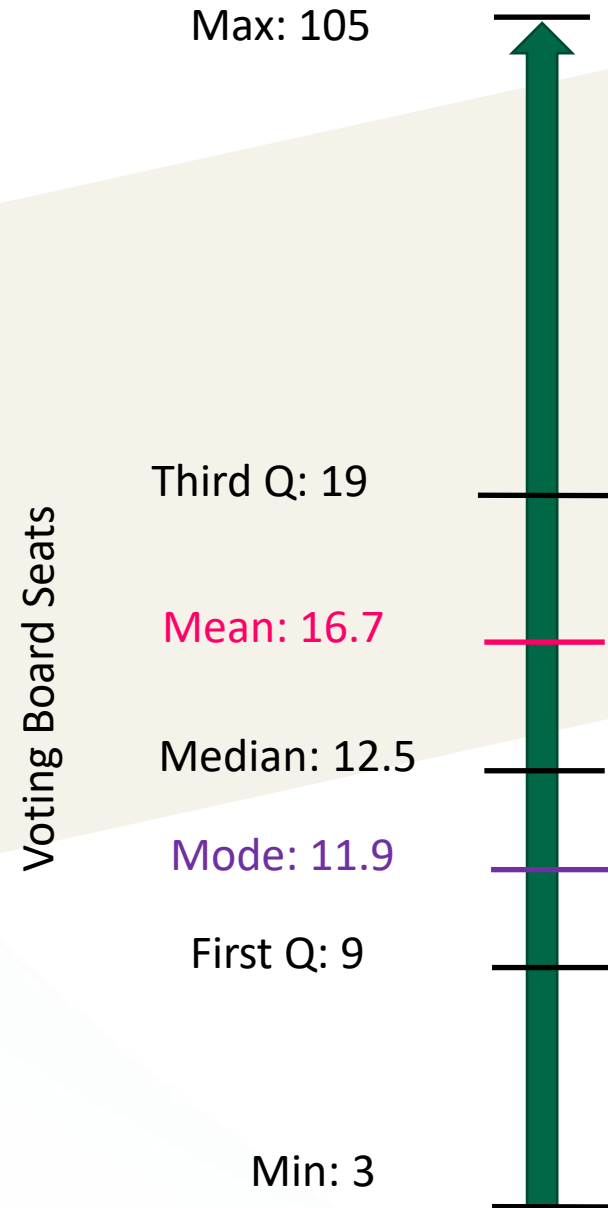
Types of Hosting

- More likely to be hosted if the MPO is a non-TMA
- Regional Council is most common host
- Combined, local governments host 36% of all MPOs

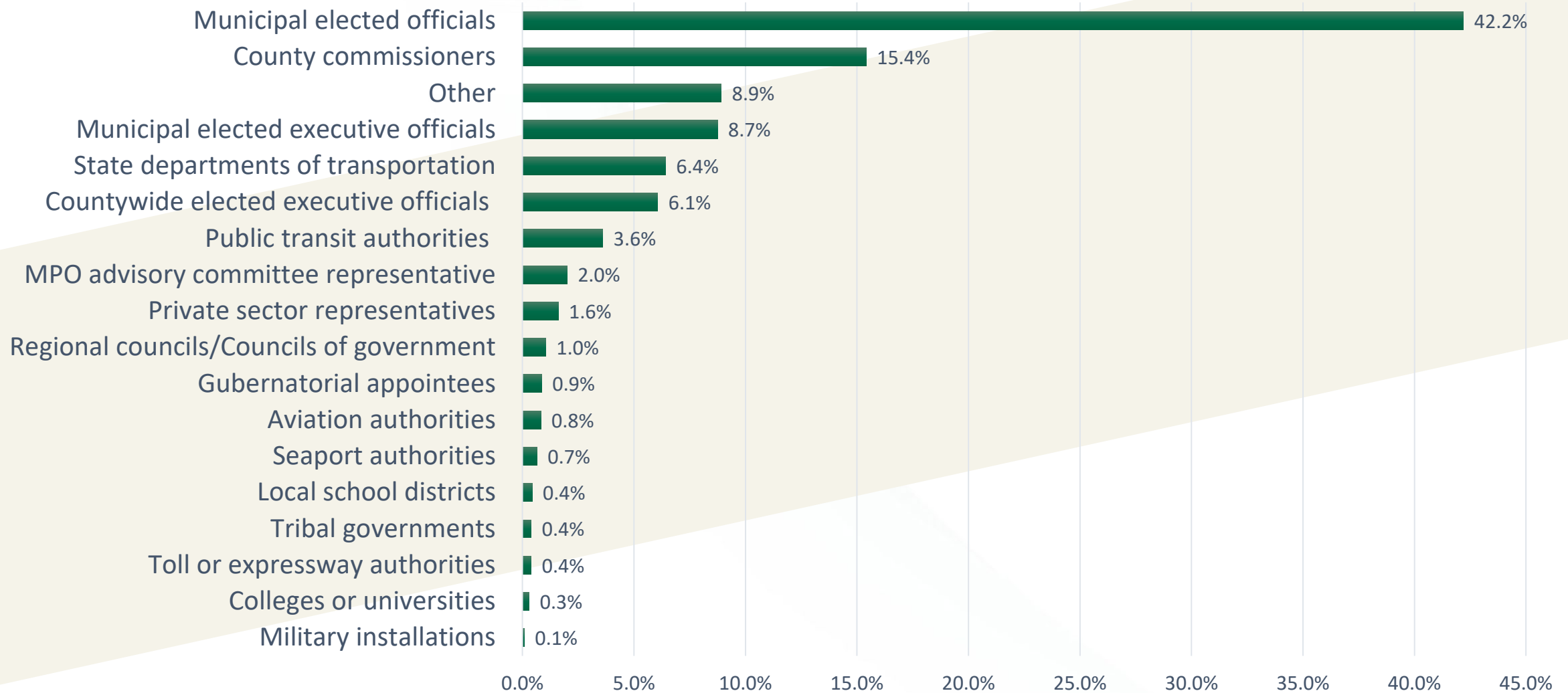


Board Size – Voting Seats

- Wide range of MPO Board sizes
 - 3 to 105 voting members
- Measures of central tendency
 - Median: 12.5
 - Bottom quarter: 9 or fewer
 - Top quarter: 19 or more
 - Mean: 16.7
 - Mode: 11.9



Board Composition – Percent of All Seats



Board Composition – Voting Rights

1

One Member-Vote

- One member-one vote is the prevailing voting structure



Weighted Voting

- Allocation of seats by population can give more seats to larger local governments



‘Rotating’ voting seats

- Weighted voting
 - 13% of MPOs in the sample
 - Many MPOs with weighted voting have never used it



Consensus Voting

- “Rotating” voting seats
 - Mostly larger MPOs
 - 24% of MPOs in the sample have a “rotating” voting seat

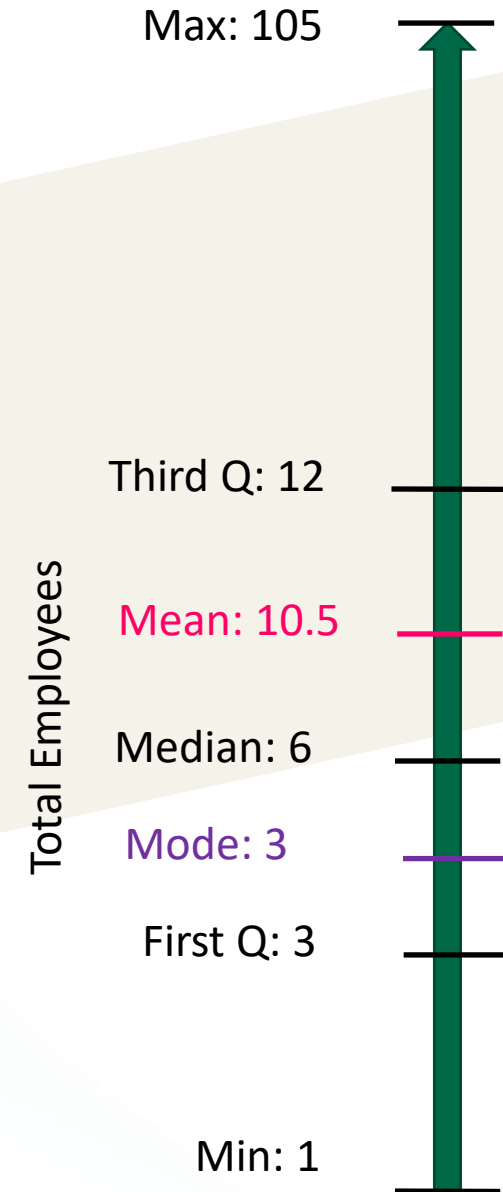


Jurisdiction Majority

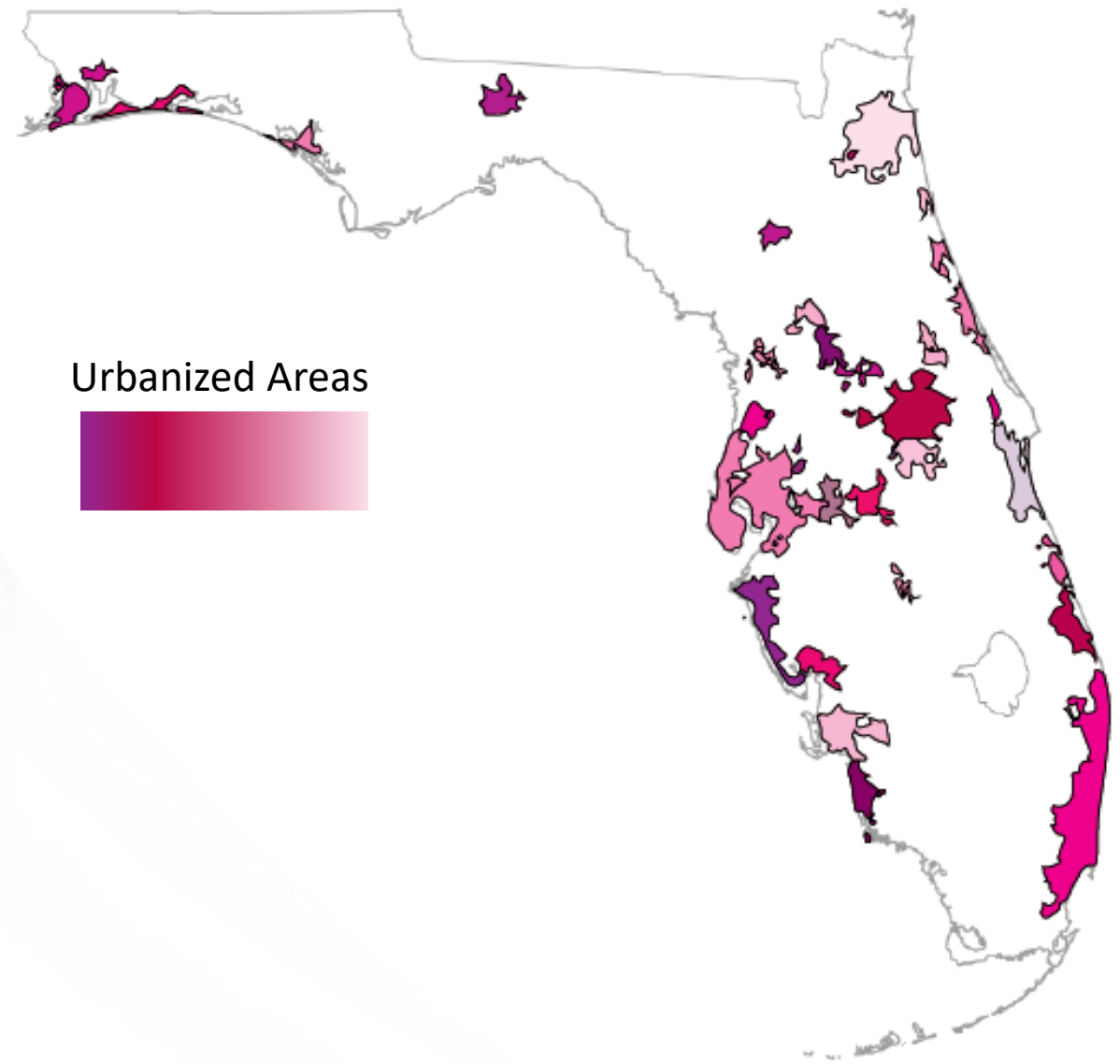
- Other voting systems: Consensus Voting, Jurisdiction Majority

Number of Employees

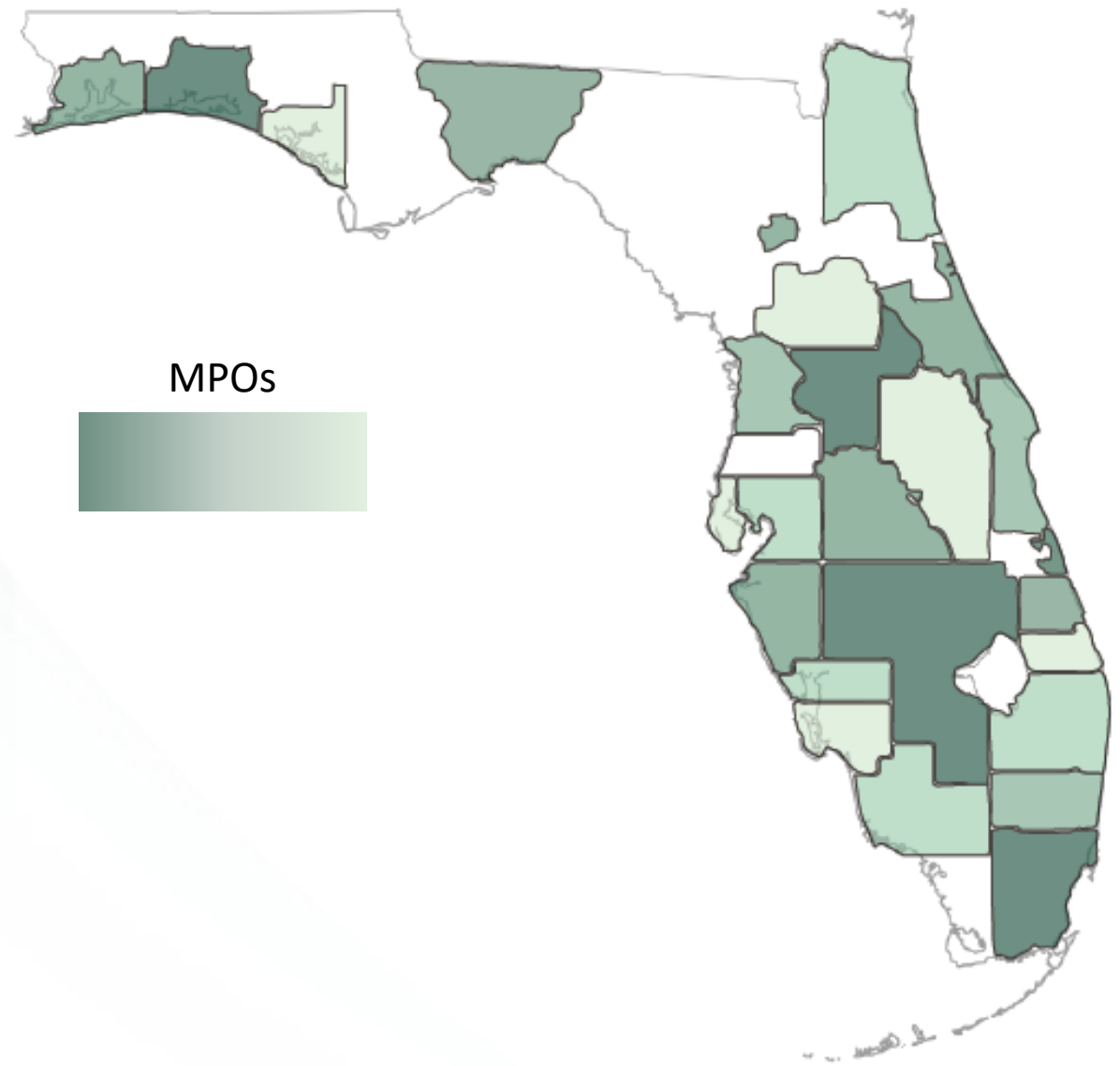
- Ranged from 105 to less than one employee
- Several high outliers skew the mean higher. Median is more instructive.
- Median MPO: 5 full-time and 1 part-time employees (6 total)
 - Three-quarters of MPOs have less than 12 total staff
 - A quarter of MPOs have 3 or fewer total staff



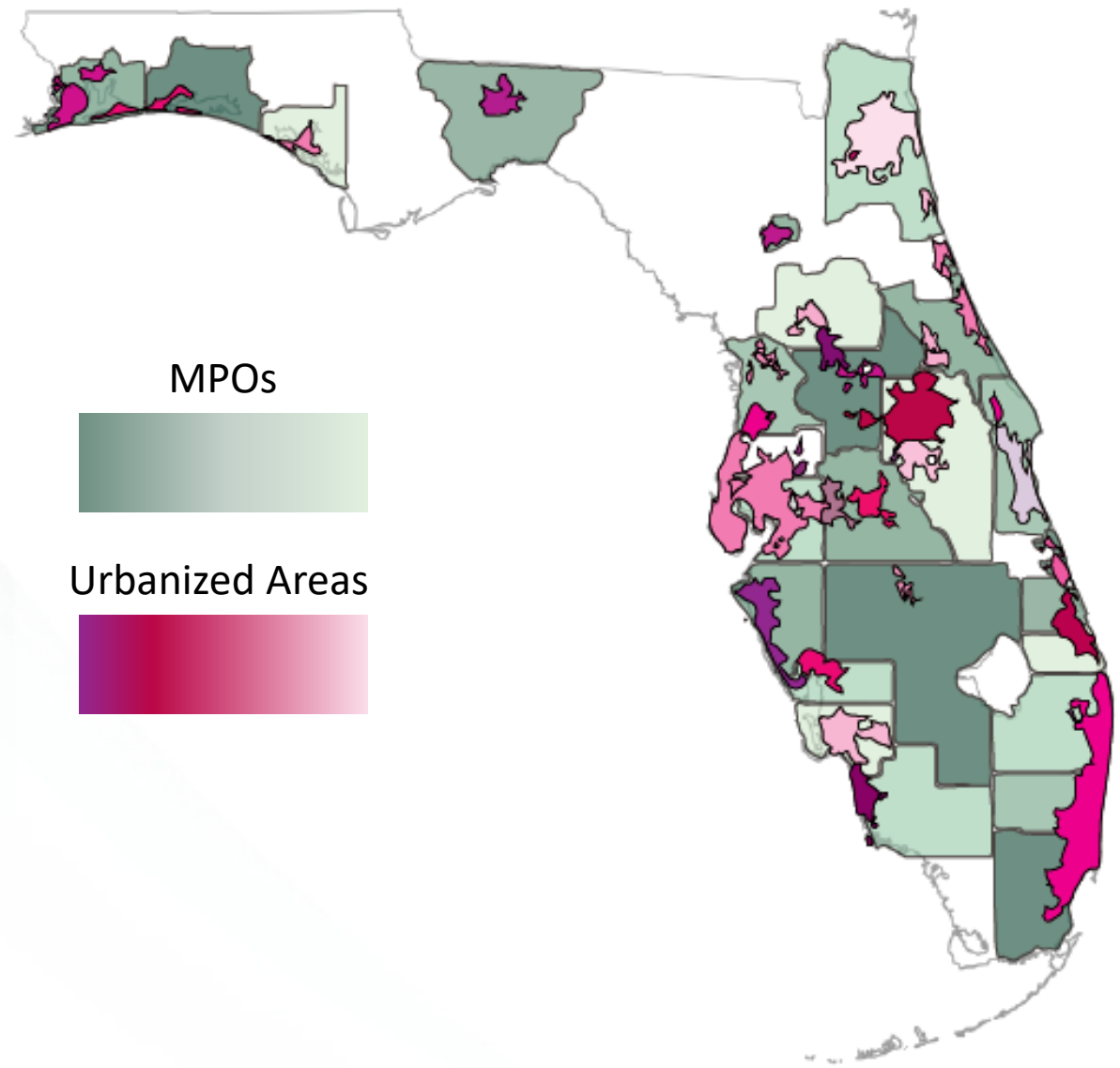
Urbanized Areas vs. MPO Planning Areas



Urbanized Areas vs. MPO Planning Areas



Urbanized Areas VS. MPO Planning Areas



Thank you!

kramer@cutr.usf.edu



UNIVERSITY of
SOUTH FLORIDA