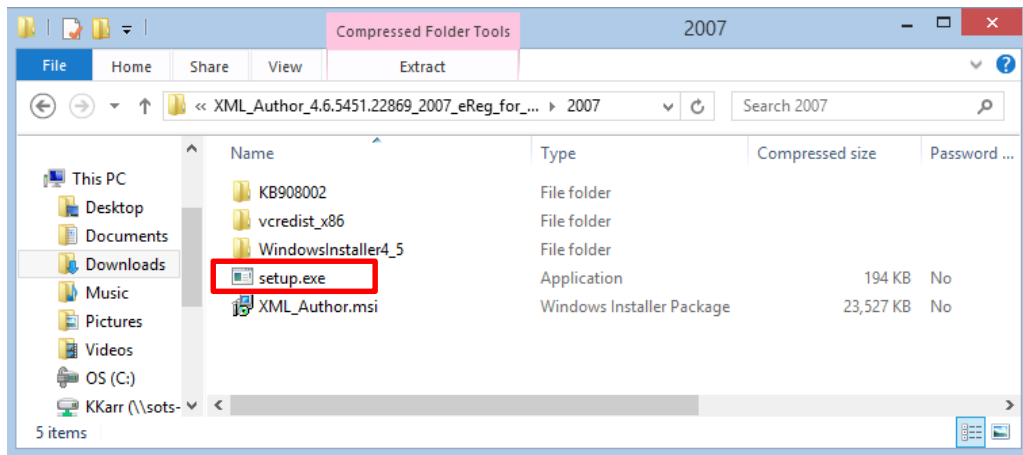


Installation and Setup Instructions for Quark XML Author

1. Quark XML Author requires:
 - One of the following operating systems:
 - Windows 7® 32-bit (Enterprise, Professional or Ultimate)
 - Windows 7® 64-bit (Enterprise, Professional or Ultimate)
 - Windows 8® 32-bit
 - Windows 8® 64-bit
 - Windows 8.1® 32-bit
 - Windows 8.1® 64-bit
 - Microsoft Office Word:
 - Word 2007 Service Pack 2 (SP2) or higher
 - Word 2010 **32-bit** (64-bit is not supported)
 - Word 2013 **32-bit** (64-bit is not supported)
 - .NET Framework 3.5. SP1 and .NET Framework 4.5.1 or higher. Both versions must be installed. .NET Framework supports the installation of both 3.5 SP1 and 4.5.1 versions on the same system. It is available for download at Microsoft's Download Center: www.microsoft.com/downloads
 - Shared Add-in Support Update for the Microsoft .NET Framework 2.0 (KB908002). It is available for download at Microsoft's Download Center: <http://support.microsoft.com/kb/908002>
 - If you want to author math equations, Design Science MathType™ version 6.9 or higher is required. (We will provide this as a separate download).

Once the required installation of Word and .NET Framework is complete, you may install Quark XML Author. MathType may be installed later.

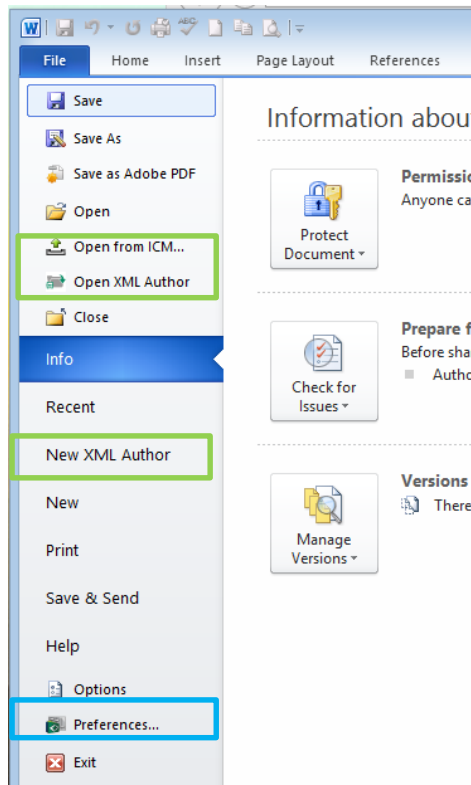
2. Click on the **Quark XML Author 5.2** link. Download the file to a folder on your computer. It will be a zip file.
3. **Close Microsoft Office programs**, including Word and Outlook.
4. If previous versions of Quark XML Author have been installed, perform the following steps.
 - Use Control Panel to uninstall all previous versions and patches.
 - Delete the installation folder (use Windows Explorer if you can't find it).
5. Installation: Extract the files from the zip file. Go to the extracted folder and open the **setup.exe** file.



Follow the recommended install options through the wizard.

6. Be aware that the Windows Installer may or may not require a reboot and it may or may not reboot automatically depending on the version of the operating system and Windows Installer currently on the system. We recommend a reboot.
7. After the install is done, open Word and click on the File tab.

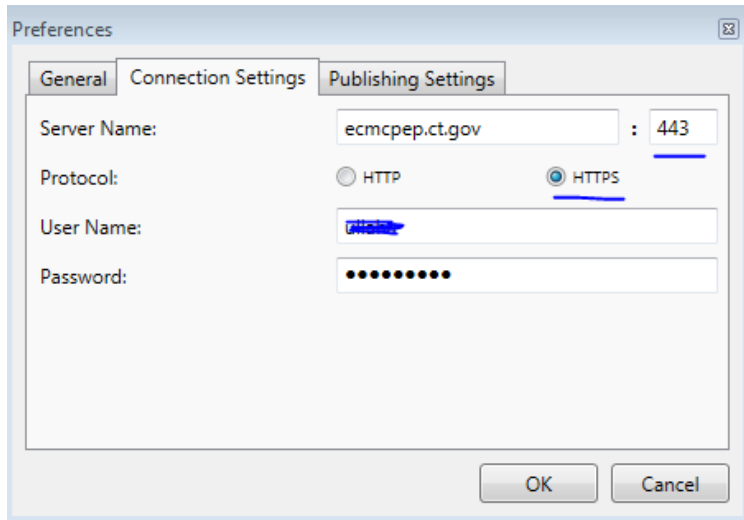
8. If the installation was successful you will see the options for XML Author as shown in the green and blue box highlights (some text has changed on these options). If you do not see these items, the installation was not successful.



9. Now click on the option called Preferences shown in the blue box above. A small pop up window will open. You need to change the preference settings on two tabs:

Connection Settings

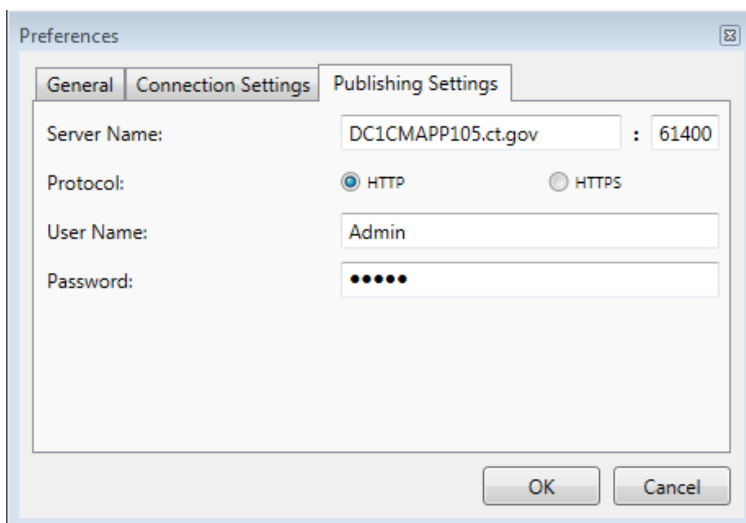
- a. Server Name: ecmcepep.ct.gov Port: 443
- b. protocol: https
- c. Put in your eRegs username and password (the same one you use to access Case Manager)



The screenshot shows the 'Preferences' dialog box with the 'Connection Settings' tab selected. The 'Server Name' field contains 'ecmcpep.ct.gov' and the 'Port' field contains '443'. The 'Protocol' section has two radio buttons: 'HTTP' and 'HTTPS', with 'HTTPS' being selected. The 'User Name' field contains a blueed-out username, and the 'Password' field contains a blueed-out password. At the bottom are 'OK' and 'Cancel' buttons.

Publishing Settings:

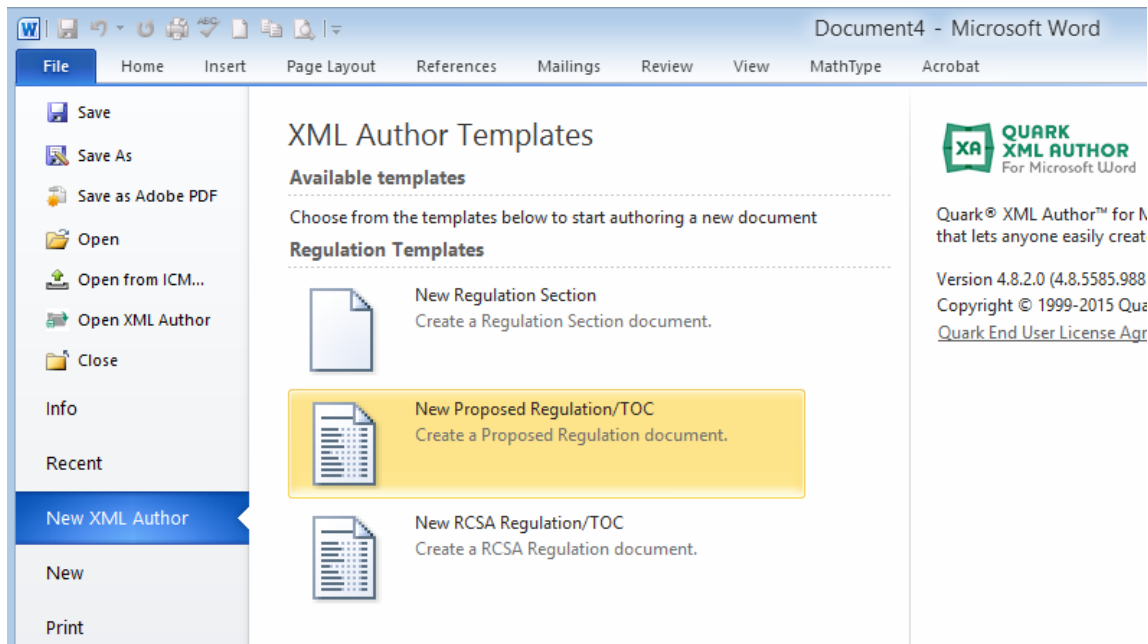
- a. DC1CMAPP105.ct.gov port 61400
- b. Use this for both User Name and Password:
Admin (Capital A for the word Admin)



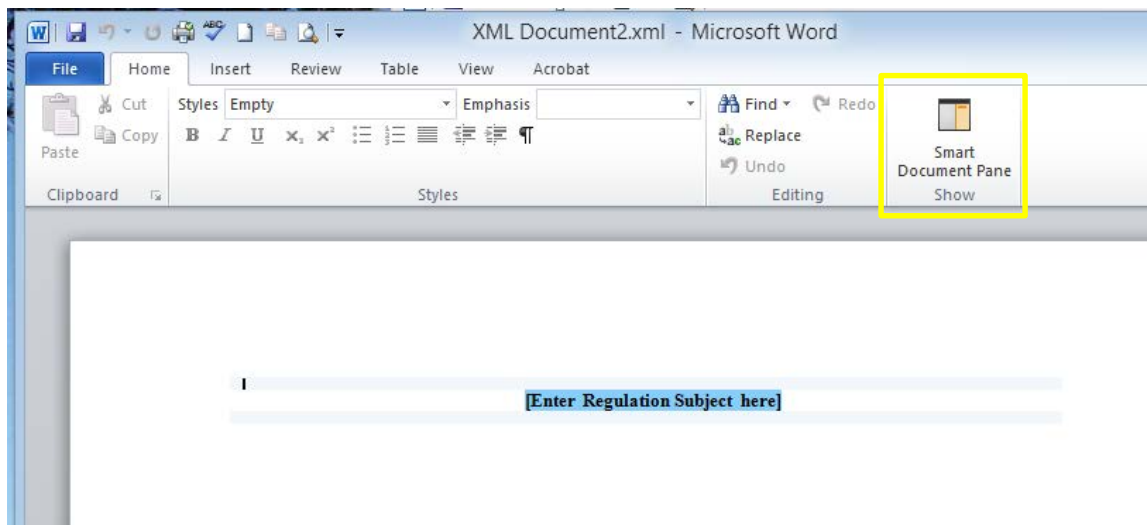
The screenshot shows the 'Preferences' dialog box with the 'Publishing Settings' tab selected. The 'Server Name' field contains 'DC1CMAPP105.ct.gov' and the 'Port' field contains '61400'. The 'Protocol' section has two radio buttons: 'HTTP' and 'HTTPS', with 'HTTP' being selected. The 'User Name' field contains 'Admin' and the 'Password' field contains a masked password. At the bottom are 'OK' and 'Cancel' buttons.

10. Click OK. Keep Word open to test your connection settings.

11. To test the connection setup, click on New XML Author and then New Proposed Regulation/TOC, as shown below.

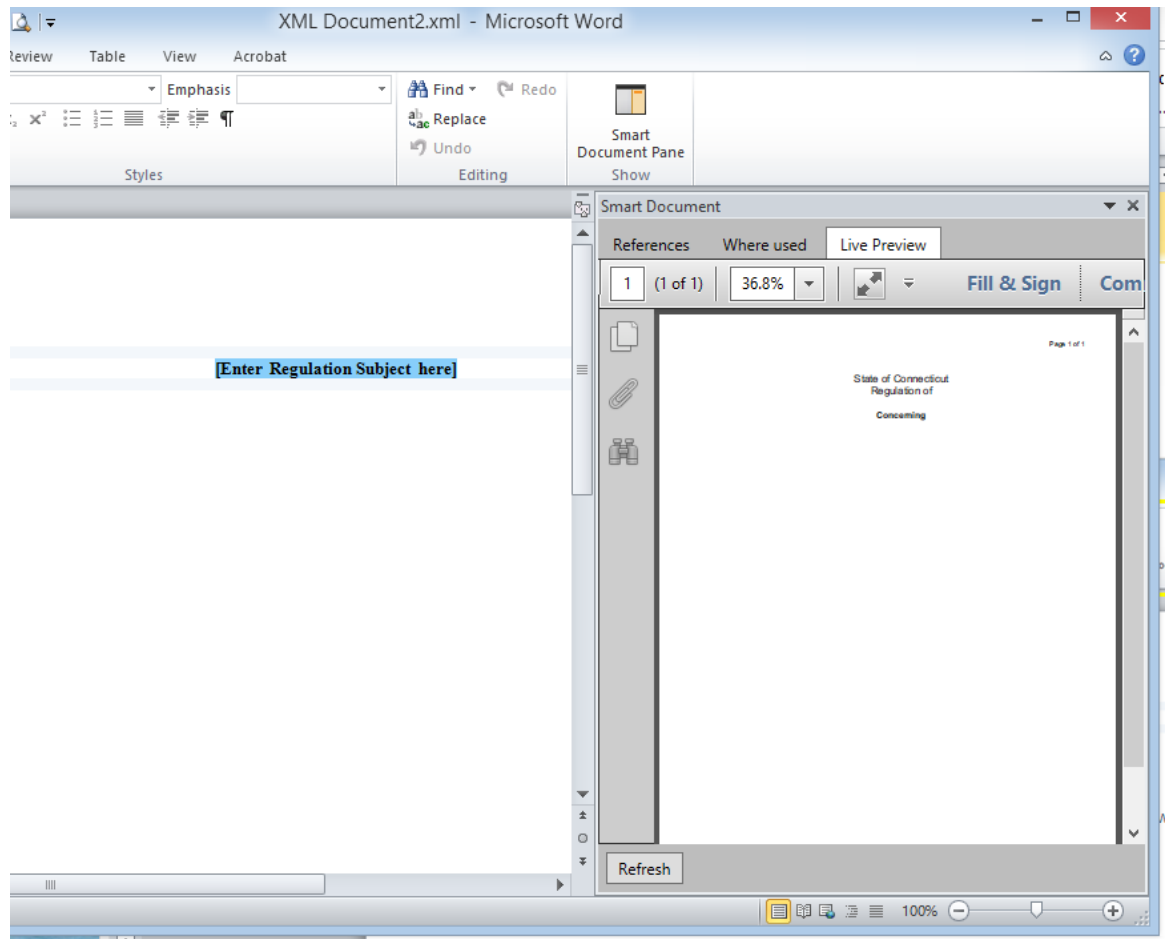


12. You will see a screen like this. Click on Smart Document Pane.



13. When the pane opens, you may need to adjust it wider until you see the Live Preview tab. Click on Live Preview. If you see something like the right hand window below, you are all set with the

Quark installation. If you receive an error message, please check your connection or publishing settings again.



14. If you are still receiving error messages, please contact us to assist.

Thank you!

Kristin Karr
eRegulations System Manager
Office of the Secretary of the State
Ph: 860-509-6009
Email: Kristin.Karr@ct.gov