



CONNECTICUT STATE DEPARTMENT OF EDUCATION

# Connecticut SAT School Day & CMT/CAPT Science

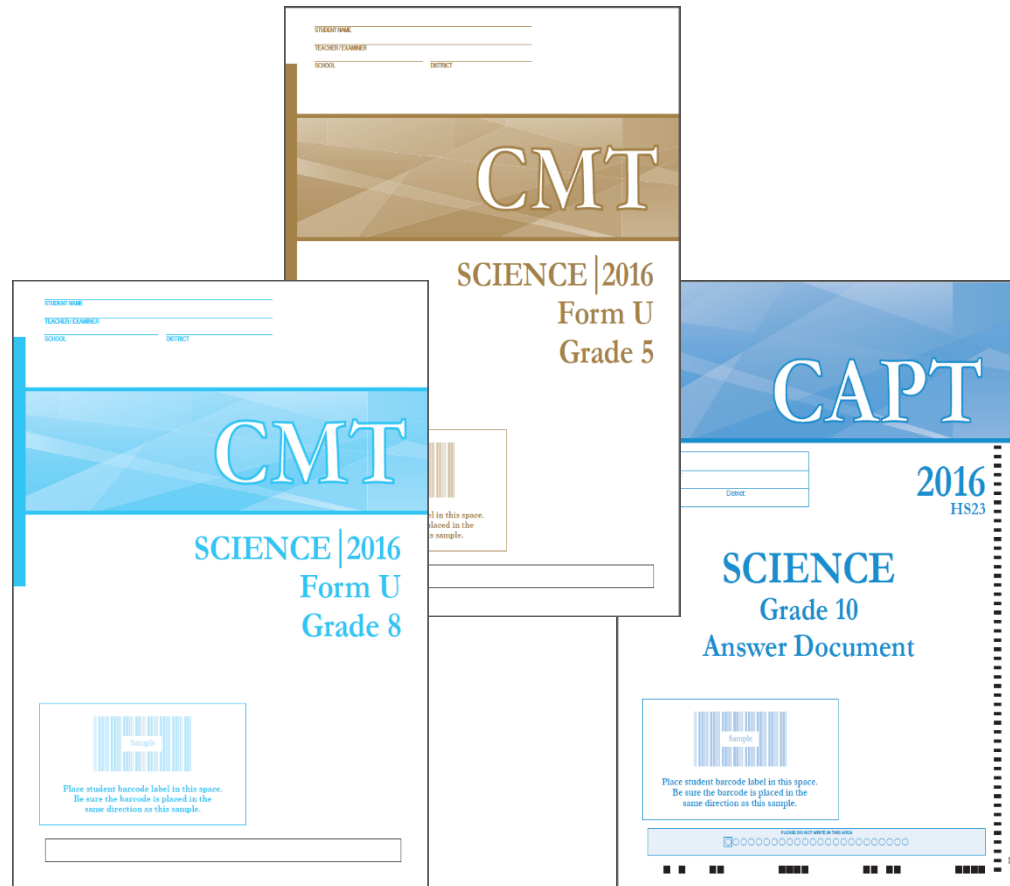
*Accommodations Options for Special Populations*

Mastery Examination Committee  
June 8, 2016

# CMT/CAPT Science

The majority of students take the test in a booklet.

- Test booklets
- Answer booklets
- Online test items




# CMT/CAPT Science

MATH	ELA	ELPT	SC	PRESENTATION SUPPORTS/ACCOMMODATIONS ALL ▲ SPED/504 ■ EL ♦
	<input type="radio"/>	<input type="radio"/>		Embedded: <a href="#">Refreshable Braille</a> ( <input type="radio"/> Contracted ; <input type="radio"/> Non-contracted) ■
<input type="radio"/>	<input type="radio"/>	<input type="radio"/>		Embedded: Braille Embosser ( <input type="radio"/> Contracted; <input type="radio"/> Non-contracted) ■
<input type="radio"/>	<input type="radio"/>	<input type="radio"/>	<input type="radio"/>	Embedded: <a href="#">American Sign Language (ASL) - Video</a> *(ELA-Listening only) Non-Embedded: <a href="#">^Sign Language for Test Items Including Directions by a Qualified Staff</a> ■
	<input type="radio"/>			Embedded: Text-to-Speech for ELA Reading Passages- (Grades 3-8) ■
<input type="radio"/>	<input type="radio"/>	<input type="radio"/>	<input type="radio"/>	Embedded: Text-to-Speech (*Does NOT include ELA Reading Passages)▲ ^Science ■ ♦
<input type="radio"/>	<input type="radio"/>	<input type="radio"/>	<input type="radio"/>	Embedded: Print Size Online- <input type="radio"/> 21 point (Level 1); <input type="radio"/> 24.5 point (Level 2); <input type="radio"/> 35 point (Level 3); <input type="radio"/> 42 point (Level 4) ▲ ^Science ■ ♦
<input type="radio"/>	<input type="radio"/>	<input type="radio"/>	<input type="radio"/>	Embedded: Streamline ■ ^Science ■ ♦
	<input type="radio"/>			Embedded: Closed Captioning - *(ELA-Listening only) ■
<input type="radio"/>	<input type="radio"/>	<input type="radio"/>	<input type="radio"/>	Embedded: Color Contrast -( <input type="radio"/> Black on White <input type="radio"/> Yellow on Blue <input type="radio"/> Medium Gray on Light Gray <input type="radio"/> Reverse Contrast <input type="radio"/> Black on Rose) ▲ ^Science ■ ♦
<input type="radio"/>	<input type="radio"/>	<input type="radio"/>	<input type="radio"/>	Embedded: Permissive Mode- Permits accessibility software such as screen readers or magnifiers. ■ ^Science ■ ♦
<input type="radio"/>	<input type="radio"/>	<input type="radio"/>	<input type="radio"/>	Embedded: Masking ▲ ^Science ■ ♦
<input type="radio"/>	<input type="radio"/>	<input type="radio"/>	<input type="radio"/>	Non-Embedded: Braille Booklet ( <input type="radio"/> Contracted; <input type="radio"/> Non-contracted) ■
<input type="radio"/>	<input type="radio"/>	<input type="radio"/>	<input type="radio"/>	Non-Embedded: Large Print Booklet ■
<input type="radio"/>	<input type="radio"/>	<input type="radio"/>	<input type="radio"/>	Non-Embedded: <a href="#">Read-Aloud by a qualified person</a> : *NOT ELA Reading Passages ▲ ^Science ■ ♦
	<input type="radio"/>			Non-Embedded: <a href="#">Read-Aloud by a qualified person</a> : ELA Reading Passages- Grades 3-8 ■
<input type="radio"/>	<input type="radio"/>	<input type="radio"/>		Non-Embedded: Color Contrast ▲
<input type="radio"/>	<input type="radio"/>	<input type="radio"/>	<input type="radio"/>	Non-Embedded: Color Overlay ▲
<input type="radio"/>	<input type="radio"/>	<input type="radio"/>	<input type="radio"/>	Non-Embedded: Noise Buffering ▲
<input type="radio"/>	<input type="radio"/>	<input type="radio"/>	<input type="radio"/>	Non-Embedded: Magnification Device ▲
MATH	ELA	ELPT	SC	RESPONSE ACCOMMODATIONS SPED/504 ■
			<input type="radio"/>	Embedded: Test Mode: Computer Response ■ ^Science ■ ♦ (This requires separate entry in TIDE)
			<input type="radio"/>	Non-Embedded: Circle Answers in Test Booklet (Multiple Choice Items Only) ■
			<input type="radio"/>	Non-Embedded: Bubbler-Test Booklet Only ■
<input type="radio"/>	<input type="radio"/>	<input type="radio"/>	<input type="radio"/>	Non-Embedded: Speech-to-Text (Voice Recognition Software) Permissive mode required ■
<input type="radio"/>	<input type="radio"/>	<input type="radio"/>	<input type="radio"/>	Non-Embedded: Alternate Response Options (Includes adapted keyboard/mouse, touchscreen, <a href="#">headwand</a> , etc.) Permissive mode required ■ ^Science ■ ♦
MATH	ELA	ELPT	SC	OTHER SUPPORTS/ACCOMMODATIONS ALL ▲ SPED/504 ■ EL ♦
<input type="radio"/>				Non-Embedded: Specialized Calculator (Non-Embedded - Only for grade 6-8) ■
<input type="radio"/>				Non-Embedded: Abacus - used in place of scratch paper ■
<input type="radio"/>				Non-Embedded: <a href="#">Multiplication Table</a> - (Non-Embedded - Only for grade 4-8) ■
			<input type="radio"/>	Non-Embedded: Time Extension ■ ♦
<input type="radio"/>	<input type="radio"/>	<input type="radio"/>	<input type="radio"/>	Non-Embedded: Separate Setting ▲
MATH	ELA	ELPT	SC	DESIGNATED SUPPORTS EL ♦
<input type="radio"/>				Embedded: <a href="#">Translation Glossary</a> (Includes Audio): <input type="radio"/> Arabic; <input type="radio"/> Cantonese; <input type="radio"/> Filipino (Tagalog & Ilokano); <input type="radio"/> Korean; <input type="radio"/> Mandarin; <input type="radio"/> Punjabi; <input type="radio"/> Russian; <input type="radio"/> Spanish; <input type="radio"/> Ukrainian; <input type="radio"/> Vietnamese; Include <input type="radio"/> English ♦
<input type="radio"/>				Embedded: Translation (Stacked - Spanish Only) ♦
			<input type="radio"/>	Non-Embedded: Native Language Reader Directions Only (Certified Staff or Non Certified Staff) ♦
		<input type="radio"/>	<input type="radio"/>	Non-Embedded: Bilingual Dictionary - Word-to-Word ^*(ELA-performance task full write) ♦

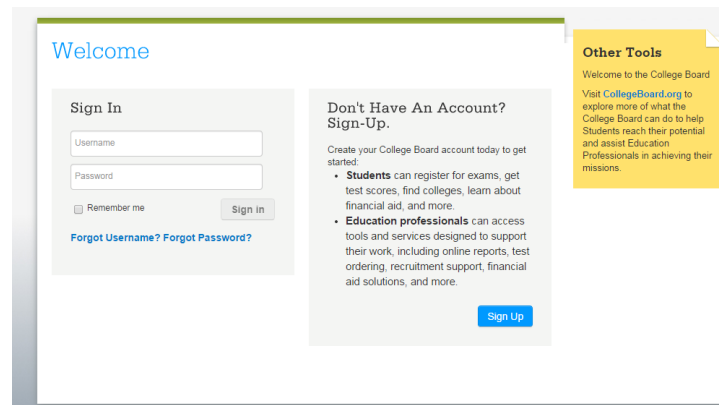


# Connecticut SAT School Day Accommodations Options

**Option 1:**  **CollegeBoard**  
**College Reportable  
Accommodations**

**Option 2:**   
**CT State-Allowed  
Accommodations (SAA)**

**Both options requires entry on the same website**



The screenshot shows the CollegeBoard website interface. On the left, there is a 'Sign In' section with fields for 'Username' and 'Password', a 'Remember me' checkbox, and a 'Sign In' button. Below these fields are links for 'Forgot Username?' and 'Forgot Password?'. In the center, there is a 'Don't Have An Account? Sign-Up.' section with a 'Sign Up' button. On the right, there is an 'Other Tools' section with a yellow background, containing text about the College Board's resources and a link to 'CollegeBoard.org'.





# Roles and Responsibilities at Participating Schools

- **SSD Coordinator** is responsible for:
  - Being the school's liaison with the College Board's Services and CSDE for Students with Disabilities.
  - Submitting accommodation requests for all students who request them at his/her school.
  - Coordinating efforts to test students who have a non-standard administration of the test and appear on the Non-standard Administration Roster (NAR).

# SSD Online Website

[Current SAT](#)[New SAT](#)[PSAT/NMSQT](#)[AP](#)[College Search](#)[Professional Development](#)[More ▾](#)[SSD](#)[Who Is Eligible?](#)[Submitting a Request](#)[Providing Documentation](#)[After Approval](#)[Administering Exams](#)[Calendar](#)[Forms](#)[SSD Online](#)[Getting Access to SSD Online](#)[Submitting Requests Online](#)[Managing Accommodations Online](#)[Tips & FAQs](#)

## SSD Online

The College Board's SSD Online is the fastest and most accurate way to request and manage accommodations for students with disabilities.

### Already Have an SSD Online Account?

[Sign in to SSD Online](#) to access your account.

## Get Access to SSD Online

To submit and manage requests for accommodations, schools designate one or more SSD Coordinators. [Educators: Find out how to request access.](#)

## How to Use SSD Online

Get step-by-step instructions on:

- [Submitting Requests Online](#)
- [Managing Accommodations Online](#) (Covers checking request status, changing accommodations, submitting additional information, and more)

### Parents and Students

Benefit from SSD Online by working with your school to request accommodations. [Get an overview of the request process.](#)

## Contact Us

### Email

**Phone:** 212-713-8333

**Fax:** 866-360-0114

**TTY:** 609-882-4118

### College Board SSD Program

P.O. Box 7504

London, KY

40742-7504

## Important Dates

### November SAT and SAT Subject Tests

SSD request deadline:

Sept. 18, 2015

### December SAT and SAT Subject Tests

SSD request deadline:

Oct. 16, 2015

### January SAT and SAT Subject Tests

SSD request deadline:

Dec. 4, 2015

[View SSD Calendar for more details >](#)

# Connecticut SAT Accommodations

	College Reportable Accommodations	Connecticut State-Allowed Accommodations for State Accountability
<b>Students with Disabilities</b>	Used for accountability and college admission	Used for accountability purposes only
	<ul style="list-style-type: none"> <li>• Braille Booklets</li> <li>• Text-to-Speech for all test content (CB MP3 audio)</li> <li>• Large Print Booklet</li> <li>• Color Overlay</li> <li>• Noise Buffering</li> <li>• Magnification Device</li> <li>• Computer Response</li> <li>• Scribe</li> <li>• Speech-to-Text (CB Assistive Technology)</li> <li>• Specialized Calculator</li> <li>• Abacus</li> <li>• Multiplication table</li> <li>• Time Extension</li> <li>• Separate Setting</li> <li>• American Sign Language (ASL)- test directions only</li> <li>• Signed Exact English -test directions and test content</li> </ul>	<ul style="list-style-type: none"> <li>• Sign Language - test content</li> <li>• Sign Language – student responses</li> </ul>
<b>English Learners</b>	Used for accountability and college admission	Used for accountability purposes only
	<ul style="list-style-type: none"> <li>• Written Directions in Spanish, Arabic, Portuguese, Polish, Mandarin and Haitian-Creole</li> <li>• Native Language Reader – test directions only</li> </ul>	<ul style="list-style-type: none"> <li>• Time Extension</li> <li>• Bilingual Dictionary Word-to-Word Translation</li> </ul>