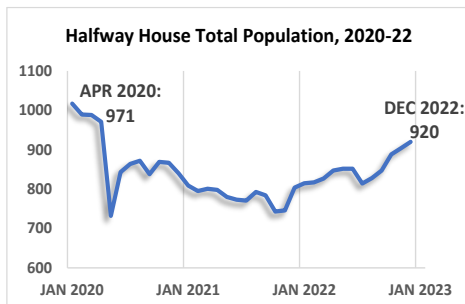




OPM - Criminal Justice Policy & Planning Division Monthly Indicators Report

Highlights

- On December 1, 2022 Connecticut's jail and prison population stood at 10,050, a small decrease of just 18 people (-0.2%) from November 1.
- Admissions too held steady, with:
 - Pretrial admissions totaling 940 throughout November, just 8 more (+0.9%) than the prior month.
 - Sentenced admissions reaching 156 in November, compared to 164 in October. Sentenced admissions are up 14.7% from one year ago, however. (See Table 2a)
- Releases and discharges slowed in November following their growth the month prior. End of sentence discharges fell 4.7% (-18) to 369, while discretionary releases fell 6.2% (-19) to 286.
- On December 1, the DOC community supervision halfway house population reached 920 individuals, a level last seen near the onset of the pandemic. On April 1, 2020, the population stood at 971 people before dropping sharply in the initial months and gradually regressing to the pre-pandemic level over the following 2.6 years.



Correction Population Forecast

Department of Correction facilities held an average 10,051 people during the first week of December, a negligible difference of 10 compared to November's count. Although the third consecutive month to register a less-than-one-percent decline, December's population change is the slightest yet (-0.1% versus -0.3% in each of the two prior months).

The relative stability of the DOC count from November to December is noteworthy, as OPM CJPPD estimated the facility population to begin a seasonal decline and fall by approximately 70 people. As noted above, December's count did not dip as expected, widening the difference from our estimate to 2.6%.

As 2022 ends, we will continue to monitor whether counts hold at or near current levels, or if a larger reduction emerges in December. January's population count will be telling. Should the population not contract by January 1, DOC facilities could hold approximately 10,200 people by February 2023, assuming the 1.5% average increase in January as historically observed. Chart 1 below, however, depicts how consistently pandemic-era counts have diverged from expectations, making us hesitant in assuming much about the year ahead. Still, we anticipate the DOC population to decline to start January, before rising into February 2023, and will be tracking the magnitude of these changes ahead.

TABLE 1 – Correction Population Forecast

	Avg. Daily OPM 2022 Count	Forecast	Inmate difference
JAN '22	9,456	-	-
FEB	9,734	9,734	-
MAR	9,818	9,800	18
APR	9,838	9,759	79
MAY	9,905	9,709	196
JUN	9,923	9,708	215
JUL	9,981	9,737	244
AUG	10,048	9,777	271
SEP	10,122	9,822	300
OCT	10,093	9,864	229
NOV	10,061	9,865	196
DEC	10,051	9,796	255
JAN '23		9,656	
FEB		9,820	

Avg. Daily Count (ADC) for 1st week of month

Chart 1 – Actual Correction Population Against the OPM Forecasts

January 1, 2021 through February 1, 2023

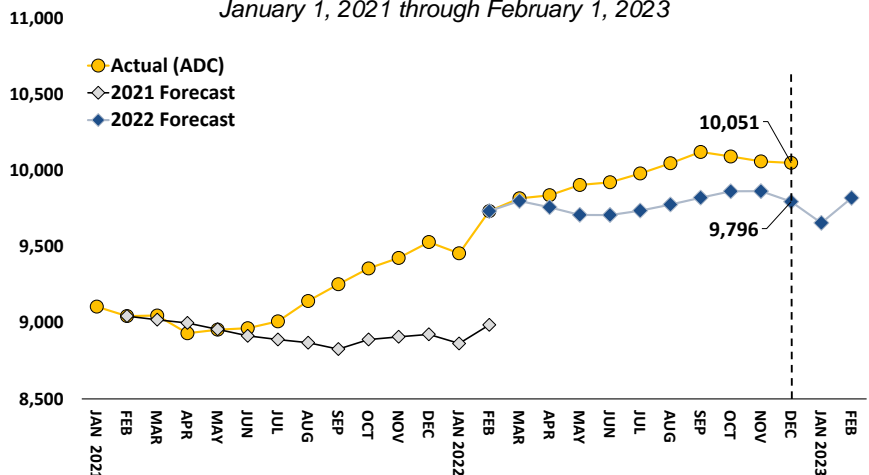


Chart 2 - Criminal Justice, Monthly Counts and Flows

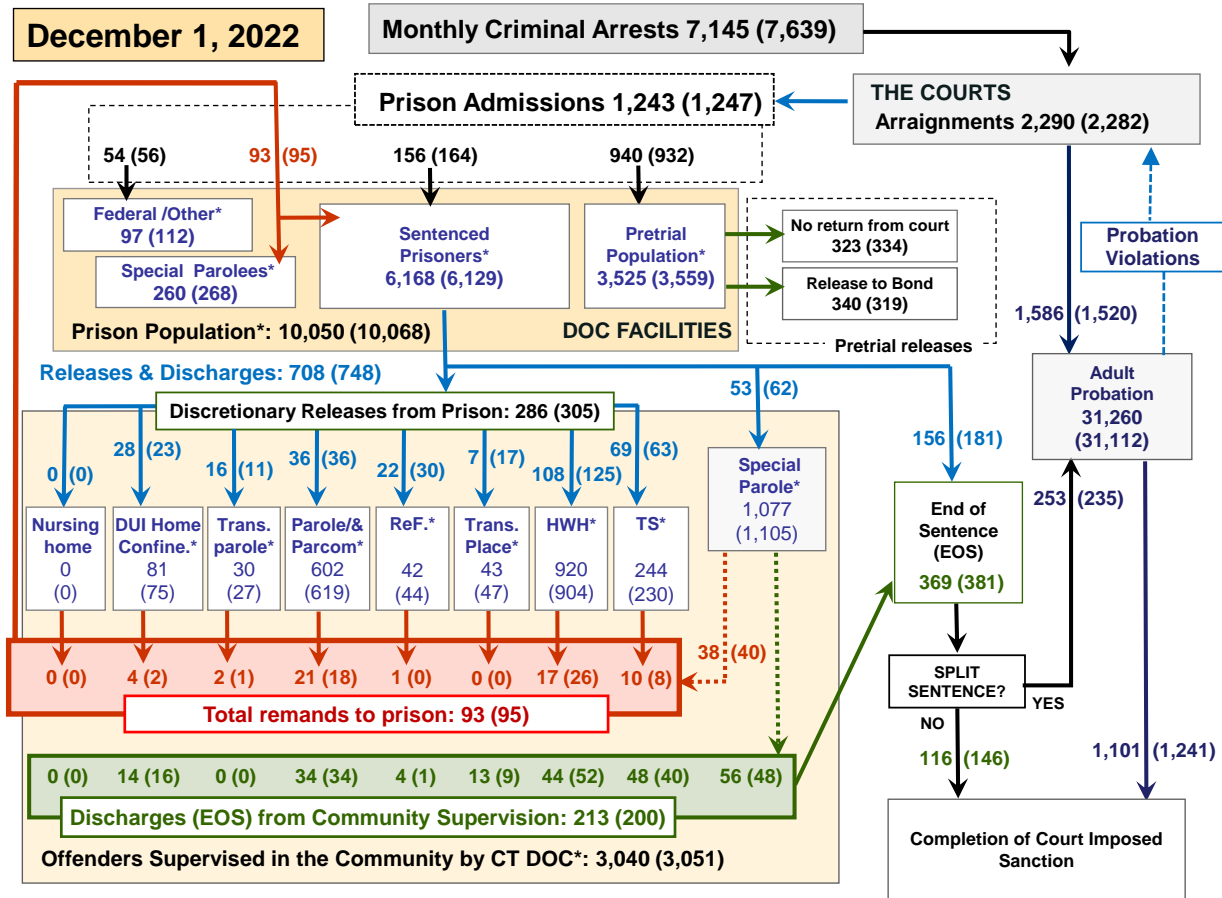
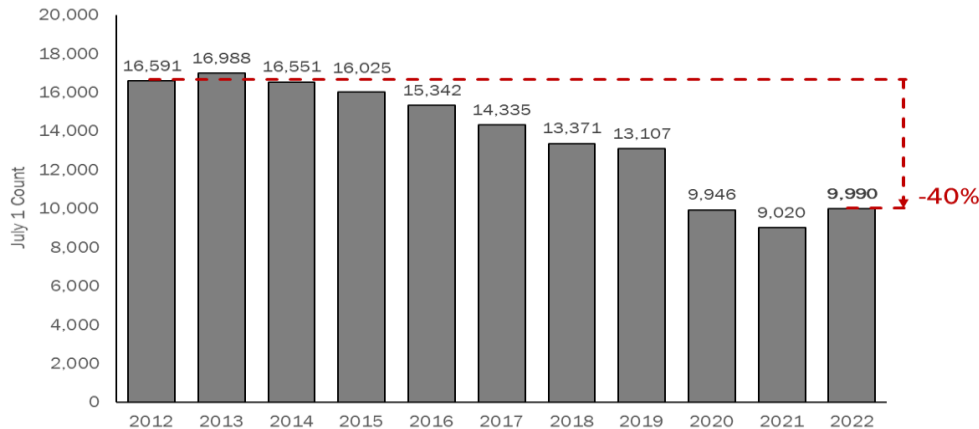


Chart 2 contains monthly operations data for November 2022 and daily counts reported on December 1, 2022. Asterisks (*) indicate the daily count on December 1st. Figures for last month are enclosed by parentheses. Sources: Arrests - CRMVS, via CJIS, Court and probation data - CSSD, all other data - CT DOC.

Spotlight: July 1 Correction population, 2012-2022



In December, OPM CJPPD released *Trends In Connecticut's Criminal Justice System: 2022 Report*, which was presented to the Criminal Justice Policy Advisory Commission (CJPAC) on December 15. Public Act 21-97 requires OPM CJPPD to produce an annual report containing data analysis of state criminal justice system trends, including, if available, the number of reported crimes and arrests, and the size of the populations on probation, parole, special parole, and in prison. This year's report was the second edition produced under this statutory requirement.

Many metrics collected in the *Trends* presentation have been developed from contributions to the *Monthly Indicators* by collaborating justice agencies. Unlike the *Monthly*, which emphasizes month-to-month and year-to-year changes across Connecticut's justice system, the *Trends* presentation examines system indicators over longer, five- and ten-year, periods. The chart above is one example, which highlights the 40% reduction in the July 1 DOC facility population over the past decade. The full presentation is now available on the [OPM CJPPD website](https://portal.ct.gov/OPM/CJ-About/Homepage/CJPPD).

Table 2 - First-of-Month Totals

	2022			2021	% Change	
	Oct. 1	Nov. 1	Dec. 1	Dec. 1	Monthly	Annual
DOC Facilities						
Federal/Other	106	112	97	108	-13.4%	-10.2%
Sentenced	6,140	6,129	6,168	5,420	0.6%	13.8%
Special Parole	270	268	260	338	-3.0%	-23.1%
Pretrial	3,578	3,559	3,525	3,652	-1.0%	-3.5%
Total	10,094	10,068	10,050	9,518	-0.2%	5.6%
DOC Community						
Transfer Parole	27	27	30	55	11.1%	-45.5%
Parole/ Parcom Total	647	619	602	822	-2.7%	-26.8%
Parole	498	472	459	662	-2.8%	-30.7%
Parcom @ CT	149	147	143	160	-2.7%	-10.6%
Furlough	37	44	42	22	-4.5%	90.9%
Trans Placement	41	47	43	56	-8.5%	-23.2%
DUI/Home confine.	70	75	81	53	8.0%	52.8%
Halfway House Total	888	904	920	804	1.8%	14.4%
Comm Release	402	416	448	344	7.7%	30.2%
TS	11	8	8	10	0.0%	-20.0%
Parole	161	154	148	154	-3.9%	-3.9%
Transfer Parole	13	17	17	20	0.0%	-15.0%
Special Parole	301	309	299	276	-3.2%	8.3%
TS	213	230	244	121	6.1%	101.7%
Nursing home	0	0	0	0	-	-
Special Parole	1,137	1,105	1,077	1,356	-2.5%	-20.6%
Total	3,060	3,051	3,039	3,289	-0.4%	-7.6%

Table 2a - Monthly Admissions, Releases, & Discharges

	2022			2021	% Change	
	SEP	OCT	NOV	NOV	Monthly	Annual
Admissions						
Federal/Other	38	56	54	22	-3.6%	145.5%
Remands	93	95	93	101	-2.1%	-7.9%
DUI	8	2	4	2	100.0%	100.0%
Transfer Parole	1	1	2	1	100.0%	100.0%
Parole	19	18	21	19	16.7%	10.5%
Trans Plac/Furlough	0	0	1	0	-	-
HWH	22	26	17	23	-34.6%	-26.1%
TS	7	8	10	4	25.0%	150.0%
Special Parole	36	40	38	52	-5.0%	-26.9%
New Sentence	151	164	156	136	-4.9%	14.7%
VOP	30	30	37	27	23.3%	37.0%
Pretrial	1,000	932	940	993	0.9%	-5.3%
Total	1,282	1,247	1,243	1,252	-0.3%	-0.7%
Releases and discharges						
Transfer Parole	12	11	16	20	45.5%	-20.0%
Parole	46	36	36	62	0.0%	-41.9%
Furlough	21	30	22	13	-26.7%	69.2%
Trans. Placement	12	17	7	15	-58.8%	-53.3%
Home Confinement DUI	25	23	28	19	21.7%	47.4%
HWH	98	125	108	79	-13.6%	36.7%
TS	67	63	69	52	9.5%	32.7%
Special Parole	75	62	53	82	-14.5%	-35.4%
Nursing home	0	0	0	1	-	-
End of Sentence	358	381	369	315	-3.1%	17.1%
Total	714	748	708	658	-5.3%	7.6%
Pretrial Releases*						
From Court	368	334	323	247	-3.3%	30.8%
Release to Bond	353	319	340	348	6.6%	-2.3%

* Totals reflect events, not individual offenders

DOC - Community Release Unit (CRU)

Table 3 - Case reviews and release metrics

	Cases reviewed	Approved	Denied	Continued	Approval rate
SEP	429	209	43	99	49%
OCT	502	236	36	137	47%
NOV '22	479	223	49	129	47%
NOV '21	315	152	42	55	48%

Note: Figures published here are based on the operational data available at the time of publication. Data in subsequent issues may not agree.

Board of Pardons and Paroles

Table 4 - Parole hearings, new cases

	Parole hearings	Paroles granted	Grant rate	Granted: prior year	Granted: two years prior
SEP	42	27	64%	52	102
OCT	96	67	70%	49	78
NOV	85	48	56%	47	36

Table 4a - Other BOPP actions

	Repare from revocation	Early Termination		Special parole discharges	Transfer parole approvals
		Discretionary parole	Special parole		
SEP	33	15	17	11	8
OCT	50	13	24	14	25
NOV	32	13	22	10	13

The Pretrial Population

Table 5 - Bond ranges for pretrial detainees

Bond amount	Oct. 1, 2022	Nov. 1, 2022	Dec. 1, 2022	Dec. 1, 2021
Less than \$20K	390	395	415	420
\$20K to < \$50K	455	438	405	467
\$50K to < \$100K	502	483	494	593
\$100K or higher	2,341	2,387	2,338	2,390
Persons w/bonds	3,688	3,703	3,652	3,870
Over \$1M	471	486	490	414

Table 5a - Pretrial, weeks since admission

Weeks since last DOC admit	Oct. 1, 2022	Nov. 1, 2022	Dec. 1, 2022	Dec. 1, 2021
< 1 week	293	314	263	289
1 to < 3 weeks	271	256	250	256
3 to < 10 weeks	723	688	688	760
10 to < 30 weeks	1,010	1,035	1,081	1,067
30 wks or more	1,400	1,413	1,379	1,511
Pretrial prisoners	3,697	3,706	3,661	3,883

Table 5b - Pretrial admits, new offenders

	SEP 2022	OCT 2022	NOV 2022	NOV 2021
Arraignments	2,381	2,282	2,290	2,141
Pretrial Admits	1,000	932	940	993
New to DOC	206	236	239	256
% New	21%	25%	25%	26%

Court Support Services Division

Table 6 - The jail reinterview program

	Pretrial admissions	Offender interviews	Offenders released	Released last year
SEP	1,000	980	269	245
OCT	932	991	240	238
NOV	940	919	252	200

Table 6a - Pretrial bail and probation caseloads

	Pretrial bail case starts	Client supv. starts	Split sentence starts	Pretrial bail cases*
SEP	2,361	1,492	241	14,042
OCT	2,305	1,520	235	13,881
NOV '22	2,263	1,586	253	13,789
NOV '21	2,491	1,688	213	13,379

* reflects open cases as of the first of the month

Chart 3 – Prison Population

First week of the month, avg. daily count (ADC)

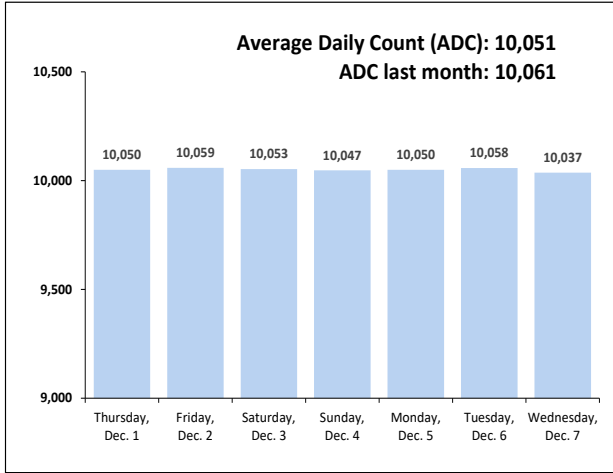


Chart 6 – Monthly DOC Admissions

November 2021 through November 2022

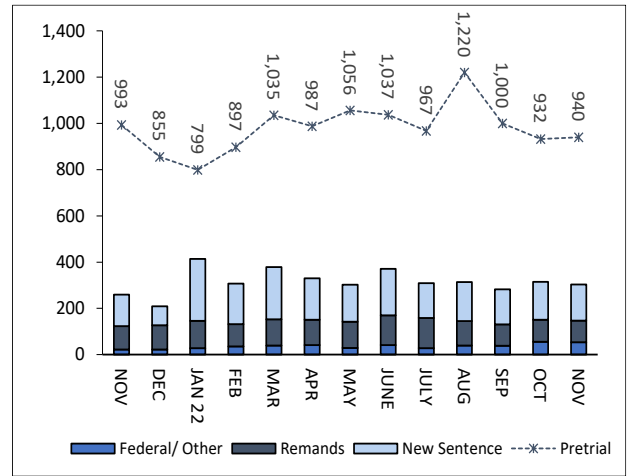


Chart 4 – Prison Population, First-of-Month

2019, 2020, 2021, and 2022

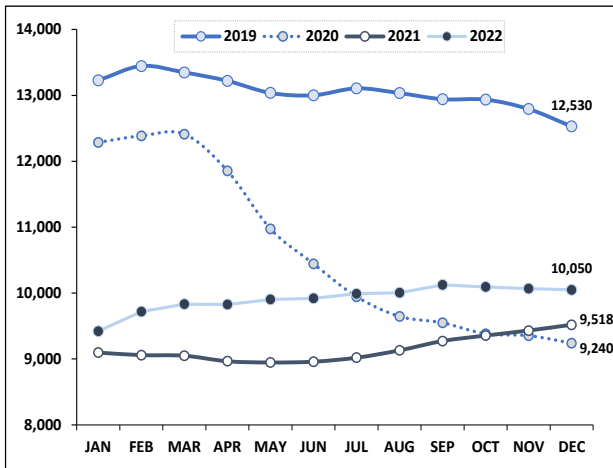


Chart 7– Remands from Community Release

November 2022

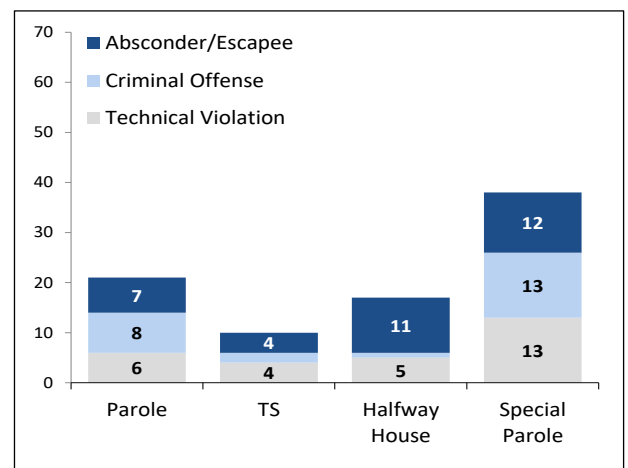


Chart 5 – Statewide Arrests

2021 and 2022

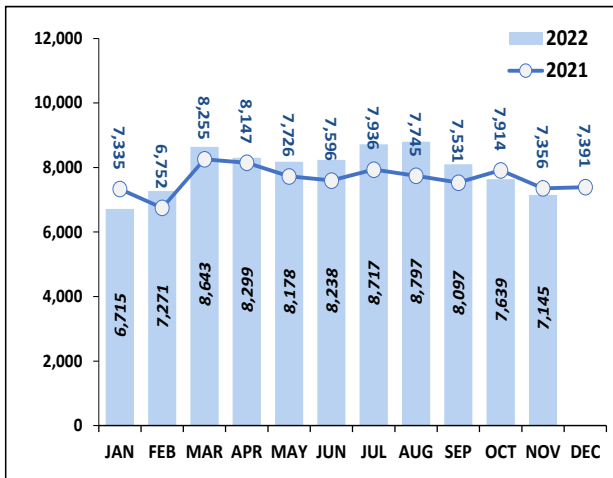
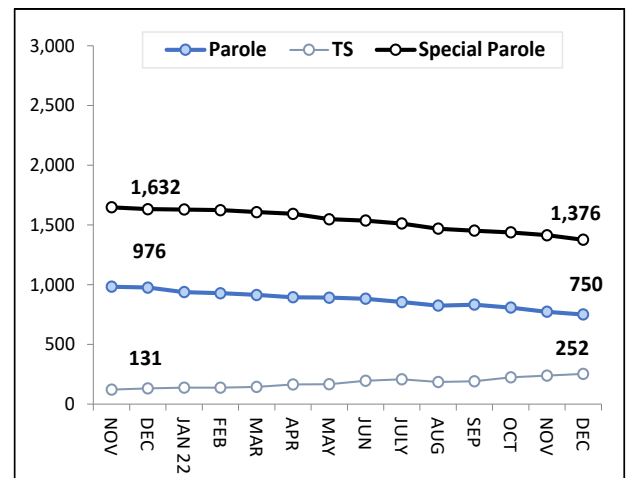


Chart 8 – DOC Community Supervision

November 1, 2021 through December 1, 2022



Note: Data for all charts, except for Chart 5, was supplied by CT DOC. Data for Chart 5 are for new case starts in the state Criminal Motor Vehicle System (CRMVS). Chart 8 includes offenders in halfway houses.