



# OPM - Criminal Justice Policy & Planning Division Monthly Indicators Report

## Highlights

- On April 1, 2022, Connecticut's prisons and jails held 9,827 individuals, just six fewer people than on March 1. Compared to last year, the facility population has grown 9.6% (see Table 2).
- Despite the facility count's consistency, other system components shifted notably during March. Arrests rose 18.9% between February and March (see Chart 5). Next-day arraignments increased as well, from 2,039 to 2,547 arraignments. 2,500 or more arraignments over a month last occurred prior to the onset of COVID-19, in January 2020.
- Pretrial admissions increased by 15.4% (from 897 to 1,035), while new sentence admissions grew 29.1% between February and March (from 175 to 226). In total, DOC admissions expanded 17.4% during this period (see Chart 6).
- Releases counterbalanced the rises in admissions over the month. Pretrial releases from court increased by 148 release in March compared to February. Total sentenced releases and discharges increased by a quarter (25.4%) between February and March (from 591 to 741, see Table 2a).

## Correctional Population Forecast

In the second month of OPM's correctional population forecast period, the gap between OPM's estimates and the facility population widened just slightly. OPM estimated 79 fewer individuals held in Connecticut jails and prisons at the start of April than compared to the average daily count for the first week (see Table 1). To date, the average daily count's percent difference from OPM's forecast remains far below 1%.

The average daily count for the first week of April also remained similar to the first week of March, differing by only 20 individuals on average. Such consistency through March is atypical given historic spring declines (see this month's *Spotlight* on p. 2). While pretrial releases, plus sentenced releases and discharges all increased over the past month, so too did pretrial and sentenced admissions. These movements resulted in little net change in the total facility population. The proportion held pretrial, however, fell slightly (from 38.3% of the March 1 facility population to 36.9% April 1).

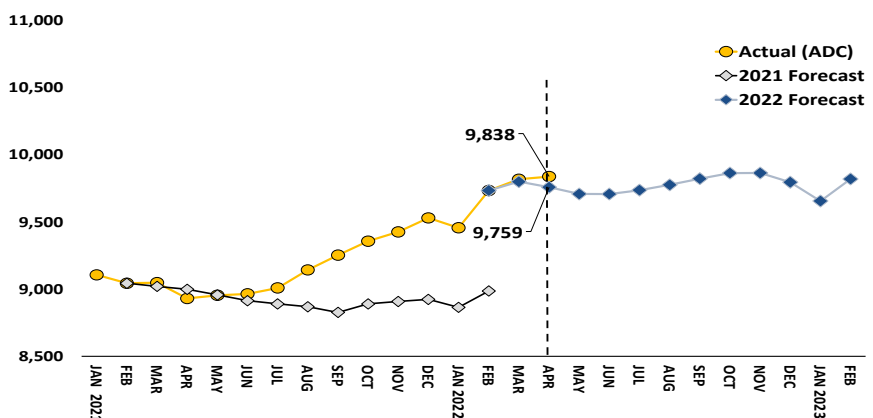
TABLE 1 – Correction Population Forecast

	Avg. Daily OPM 2022		Inmate
	Count	Forecast	difference
JAN '22	9,456	-	-
FEB	9,734	9,734	-
MAR	9,818	9,800	18
APR	9,838	9,759	79
MAY		9,709	
JUN		9,708	
JUL		9,737	
AUG		9,777	
SEP		9,822	
OCT		9,864	
NOV		9,865	
DEC		9,796	
JAN '23		9,656	
FEB		9,820	

*Avg. Daily Count (ADC) for 1st week of month*

Heading into May, OPM CJPPD will monitor whether the correctional population eventually resumes the historic seasonal pattern. The impacts on system operations from ever-changing COVID-19 conditions remain difficult to predict, given the widespread community effects. COVID's onset disrupted historic trends; we may well see new patterns emerge throughout 2022.

Chart 1 – Actual Correction Population Against the OPM Forecasts  
January 1, 2021 through February 1, 2023



## Chart 2 - Criminal Justice, Monthly Counts and Flows

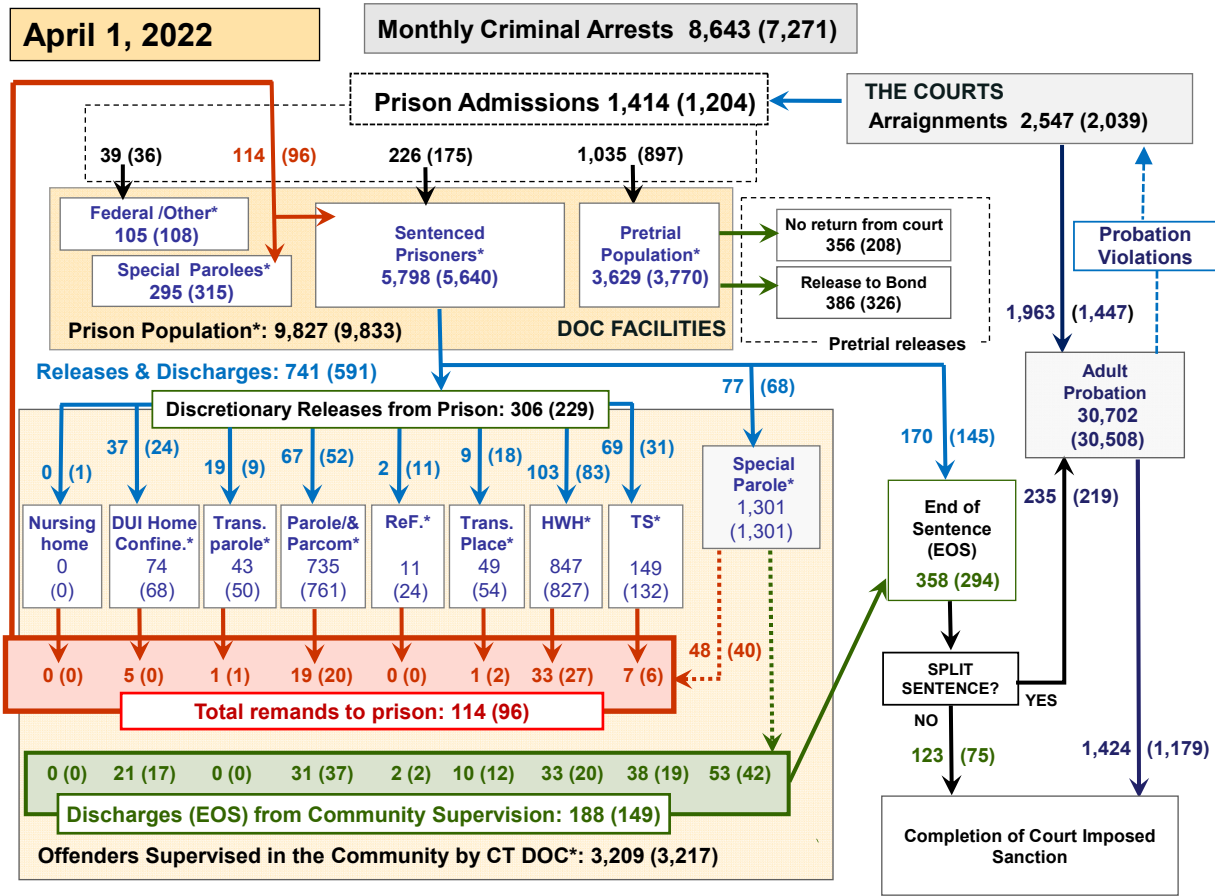
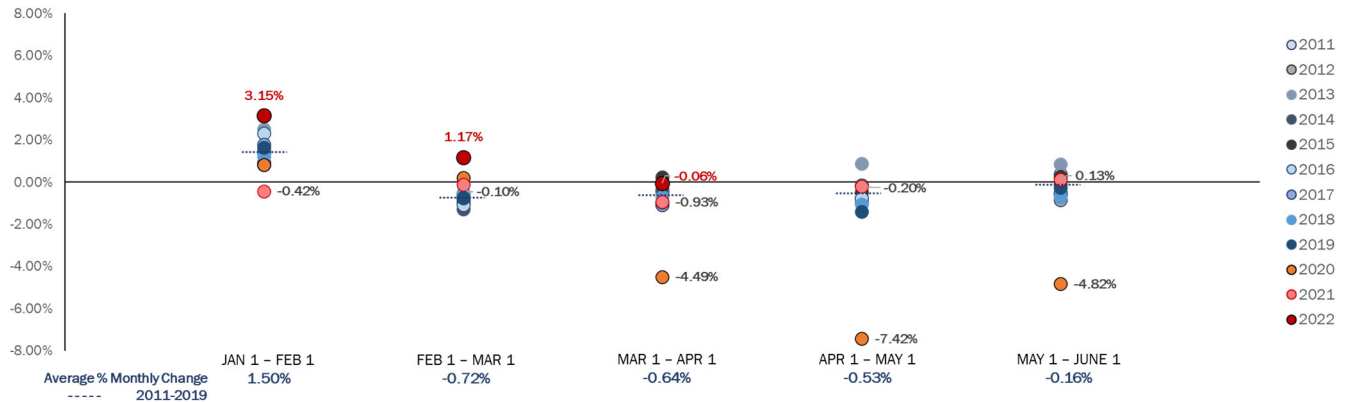


Chart 2 contains monthly operations data for March 2022 and daily counts reported on April 1, 2022. Asterisks (\*) indicate the daily count on April 1<sup>st</sup>. Figures for last month are enclosed by parentheses. Sources: Arrests – CRMVS, via CJIS, Court and probation data - CSSD, all other data - CT DOC.

## Spotlight: Correctional population percent changes in spring months



The chart above examines the percentage monthly change in the correctional population through the spring months between 2011-2022. The chart presents the percentage change per month period by year, enabling a view of how closely clustered each year's percentage changes are.

The chart illustrates both the seasonality of the correctional population changes through spring, as well as the tight grouping within each month of 2011 to 2019 observations. The chart shows the January bump, with an average 1.50% population increase that month, followed by less than one percent declines into June. While the exact percent change per month varies between 2011 and 2019,

the chart displays how closely the values were by month over most of these years.

The tight ranges lasted until the COVID pandemic, beginning March 2020 through this past month. The chart highlights how the pandemic period accounts for many of the outliers observed within each period, including the extreme declines in spring of 2020 (gold), 2021's absent January bump, as well as 2022's notable January bump. Most of all, OPM CJPPD notes that thus far 2022 (dark red) has recorded atypical population changes each month. We anticipate further outliers may appear as we proceed through spring's remaining months.

**Table 2 - First-of-Month Totals**

	2022			2021	% Change	
	Feb. 1	Mar. 1	Apr. 1	Apr. 1	Monthly	Annual
<b>DOC Facilities</b>						
Federal/Other	113	108	105	102	-2.8%	2.9%
Sentenced	5,583	5,640	5,798	5,551	2.8%	4.4%
Special Parole	327	315	295	350	-6.3%	-15.7%
Pretrial	3,696	3,770	3,629	2,963	-3.7%	22.5%
<b>Total</b>	<b>9,719</b>	<b>9,833</b>	<b>9,827</b>	<b>8,966</b>	<b>-0.1%</b>	<b>9.6%</b>
<b>DOC Community</b>						
Transfer Parole	48	50	43	171	-14.0%	-74.9%
Parole/ Parcom Total	776	761	735	897	-3.4%	-18.1%
Parole	618	603	586	717	-2.8%	-18.3%
Parcom @ CT	158	158	149	180	-5.7%	-17.2%
Furlough	27	24	11	26	-54.2%	-57.7%
Trans Placement	49	54	49	78	-9.3%	-37.2%
DUI/Home confine.	60	68	74	25	8.8%	196.0%
Halfway House Total	817	827	847	798	2.4%	6.1%
Comm Release	341	341	361	372	5.9%	-3.0%
TS	10	12	16	11	33.3%	45.5%
Parole	152	153	159	125	3.9%	27.2%
Transfer Parole	17	14	19	20	35.7%	-5.0%
Special Parole	297	307	292	270	-4.9%	8.1%
TS	127	132	149	224	12.9%	-33.5%
Nursing home	0	0	0	0	-	-
Special Parole	1,327	1,301	1,301	1,814	0.0%	-28.3%
<b>Total</b>	<b>3,231</b>	<b>3,217</b>	<b>3,209</b>	<b>4,033</b>	<b>-0.2%</b>	<b>-20.4%</b>

**Table 2a - Monthly Admissions, Releases, & Discharges**

	2022			2021	% Change	
	JAN	FEB	MAR	MAR	Monthly	Annual
<b>Admissions</b>						
Federal/Other	28	36	39	23	8.3%	69.6%
Remands	118	96	114	110	18.8%	3.6%
DUI	1	0	5	0	-	-
Transfer Parole	2	1	1	4	0.0%	-75.0%
Parole	22	20	19	20	-5.0%	-5.0%
Trans Plac/Furlough	2	2	1	1	-50.0%	0.0%
HWH	28	27	33	25	22.2%	32.0%
TS	7	6	7	6	16.7%	16.7%
Special Parole	56	40	48	54	20.0%	-11.1%
New Sentence	268	175	226	80	29.1%	182.5%
VOP	45	37	39	21	5.4%	85.7%
Pretrial	799	897	1,035	831	15.4%	24.5%
<b>Total</b>	<b>1,213</b>	<b>1,204</b>	<b>1,414</b>	<b>1,044</b>	<b>17.4%</b>	<b>35.4%</b>
<b>Releases and discharges</b>						
Transfer Parole	11	9	19	21	111.1%	-9.5%
Parole	57	52	67	61	28.8%	9.8%
Furlough	23	11	2	17	-81.8%	-88.2%
Trans. Placement	12	18	9	22	-50.0%	-59.1%
Home Confinement DUI	15	24	37	13	54.2%	184.6%
HWH	56	83	103	77	24.1%	33.8%
TS	39	31	69	25	122.6%	176.0%
Special Parole	75	68	77	81	13.2%	-4.9%
Nursing home	0	1	0	0	-	-
End of Sentence	299	294	358	351	21.8%	2.0%
<b>Total</b>	<b>587</b>	<b>591</b>	<b>741</b>	<b>668</b>	<b>25.4%</b>	<b>10.9%</b>
<b>Pretrial Releases*</b>						
From Court	162	208	356	144	71.2%	147.2%
Release to Bond	256	326	386	404	18.4%	-4.5%

\* Totals reflect events, not individual offenders

**DOC - Community Release Unit (CRU)**

**Table 3 - Case reviews and release metrics**

	Cases				Approval Rate
	Reviewed	Approved	Denied	Continued	
JAN	363	165	50	72	45%
FEB	346	156	48	75	45%
MAR 22	492	222	69	105	45%
MAR 21	351	161	65	45	46%

Note: Figures published here are based on the operational data available at the time of publication. Data in subsequent issues may not agree.

**Board of Pardons and Paroles**

**Table 4 - Parole hearings, new cases**

	Parole Hearings	Paroles granted	Grant rate	Granted: Prior Year	Granted: Two Years Prior
JAN	61	37	61%	50	63
FEB	73	43	59%	51	53
MAR	68	49	72%	58	70

**Table 4a - Other BOPP actions**

	Reparole from revocation	Reparole from rescission	Closed interest cases	Special parole cases	Transfer parole cases
JAN	31	1	17	13	11
FEB	43	0	29	6	12
MAR 2022	45	0	16	3	14
MAR 2021	20	0	27	10	25

**The Pretrial Population**

**Table 5 - Bond ranges for pretrial detainees**

Bond amount	Feb. 1, 2022	Mar. 1, 2022	Apr. 1, 2022	Apr. 1, 2021
Less than \$20K	457	472	423	383
\$20K to <\$50K	449	447	423	388
\$50K to <\$100K	580	573	561	474
\$100K or higher	2,404	2,403	2,373	1,927
Persons w/bonds	3,890	3,895	3,780	3,172
Over \$1M	426	426	434	329

**Table 5a - Pretrial, weeks since admission**

Weeks since last DOC admit	Feb. 1, 2022	Mar. 1, 2022	Apr. 1, 2022	Apr. 1, 2021
< 1 week	294	288	285	225
1 to < 3 weeks	226	251	270	198
3 to < 10 weeks	634	631	679	519
10 to < 30 weeks	1,192	1,157	1,023	821
30 wks or more	1,547	1,571	1,534	1,413
Pretrial prisoners	3,893	3,898	3,791	3,176

**Table 5b - Pretrial admits, new offenders**

	JAN 2022	FEB 2022	MAR 2022	MAR 2021
Arraignments	1,834	2,039	2,547	1,932
Pretrial Admits	799	897	1,035	831
New to DOC	191	233	250	203
% New	24%	26%	24%	24%

**Court Support Services Division**

**Table 6 - The jail reinterview program**

	Pretrial admissions	Offender interviews	Offenders released	Released last year
JAN	799	819	118	150
FEB	897	766	203	138
MAR	1,035	1,013	255	225

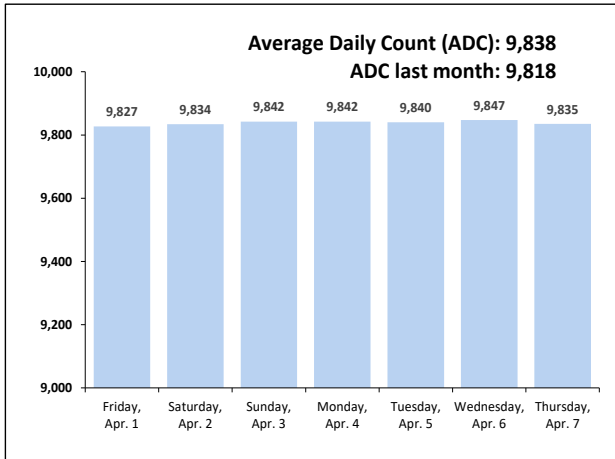
**Table 6a - Pretrial bail and probation caseloads**

	Pretrial Bail Case Starts	Client Supv. Starts	Split Sentence Starts	Pretrial bail cases
JAN	2,050*	1,583	212	12,665*
FEB	2,050*	1,447	219	12,665*
MAR	2,050*	1,963	235	12,665*
MAR '21	2,050*	1,004	210	12,665*

\* CSSD estimates

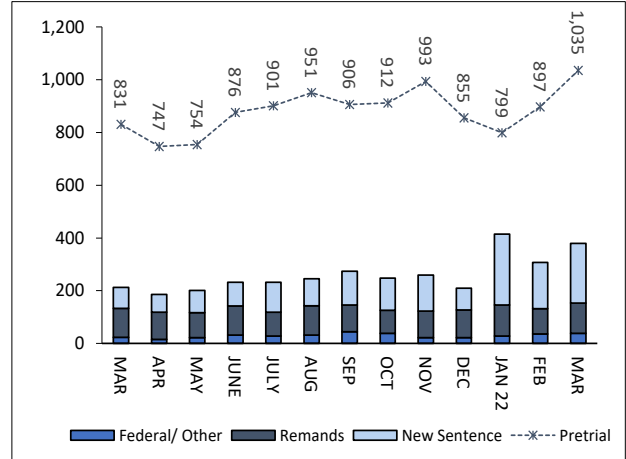
**Chart 3 – Prison Population**

First week of the month, avg. daily count (ADC)



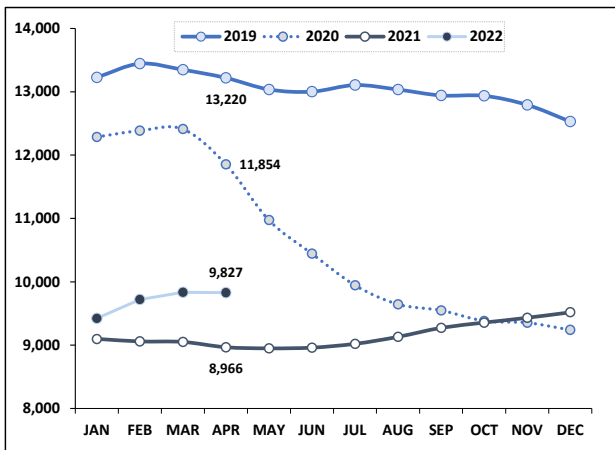
**Chart 6 – Monthly DOC Admissions**

March 2021 through March 2022



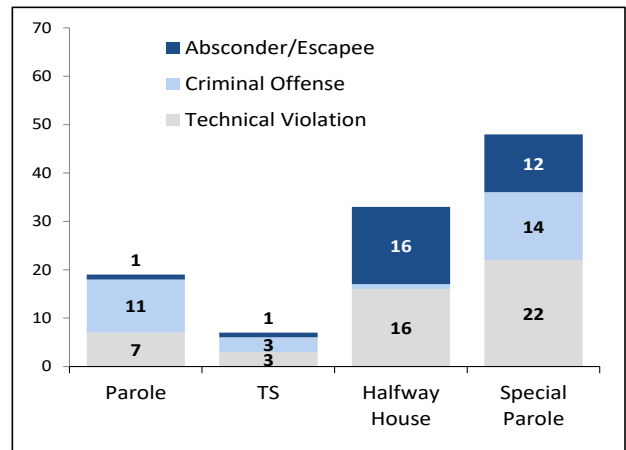
**Chart 4 – Prison Population, First-of-Month**

2019, 2020, 2021, and 2022



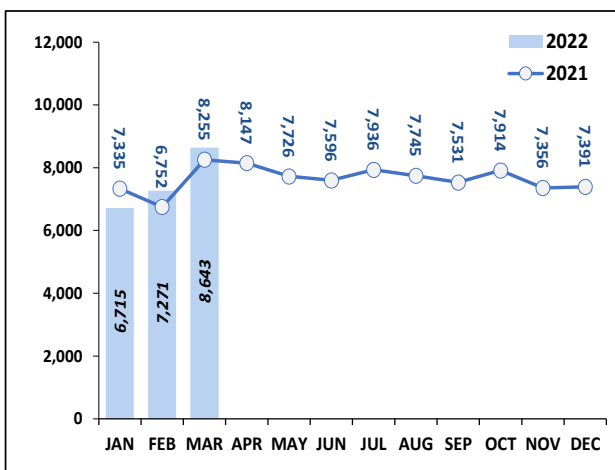
**Chart 7– Remands From Community Release**

March 2022



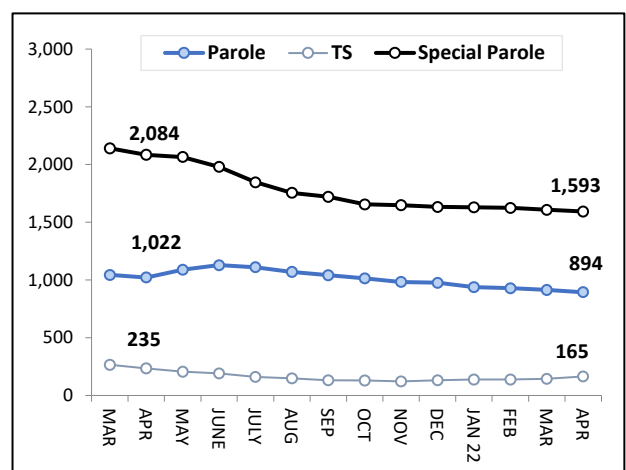
**Chart 5 – Statewide Arrests**

2021 and 2022



**Chart 8 – DOC Community Supervision**

Mar.1, 2021 through Apr.1, 2022



Note: Data for all charts, except for Chart 5, was supplied by CT DOC. Data for Chart 5 are for new case starts in the state Criminal Motor Vehicle System (CRMVS). Chart 8 includes offenders in halfway houses.