

OPM - Criminal Justice Policy & Planning Division

Monthly Indicators Report

Highlights

- The rise in the correctional population during the summer has begun to slow. Between the first of September and October, the number of individuals in DOC facilities increased a mere 0.9% (from 9,272 to 9,355 people). Despite the summer increase, there is still only a 0.3% difference in the population between this October and one year prior (9,381 compared to 9,355 people).
- Between August and September, correction admissions decreased by 16 individuals (-1.3%, see Table 2a). Despite this lack of monthly growth, admissions remain up 41.8% compared to September of the prior year (from 832 to 1,180 admits).
- The DOC community supervision population fell 3.8% between the first of September and October 2021 (3,481 to 3,347 supervised persons). Annually, this change is more pronounced, with an overall decline of 29.2% compared to October of the prior year (from 4,726 to 3,347). The special parole component of community supervision has contracted by 32.7% during the same annual period (see Table 2).
- Consistent with the stabilization in criminal justice system metrics, the probation population decreased 0.2% between August and September (from 29,334 to 29,262 people). Similarly, there was no difference in the number of arraignments conducted over this period: 2,115 in each of the two months.

Correction Population Forecast

Through the first week of October, Connecticut's correction population continues to exceed OPM's forecasted population. The average daily count for the first week of October 2021 exceeded OPM's estimate by 467 individuals (see Table 1). The average daily count's percent difference from OPM's forecast in October rose to 5.3% from 4.8% in September.

The recent increases in the pretrial population, which drove the breakaway of the correction population from OPM's forecast, showed signs of slowing this month. The pretrial population grew by less than 1% in September, adding just 9 people and reaching 3,465 as of October 1. The sentenced population too grew only slightly (less than 1%) during the same period, with an October 1 count of 5,416 compared to 5,367 in September. Pretrial admissions decreased slightly in September.

OPM continues to monitor both pretrial and sentenced populations for shifts. As the sentenced population remains relatively steady, we have yet to see any indication that many of the individuals held pretrial may serve longer incarceration sentences following the disposition of their cases. Should the sentenced population begin to rise substantially, pretrial releases increase, or probation starts rise, OPM will be better able to gauge any potential long-term population impacts from the high pretrial counts.

TABLE 1 – Correction Population Forecast

	Avg. Daily OPM 2021 Count	Forecast	Inmate difference
JAN '21	9,106	-	-
FEB	9,044	9,044	-
MAR	9,048	9,020	-28
APR	8,931	8,999	68
MAY	8,955	8,957	2
JUN	8,965	8,914	-51
JUL	9,009	8,890	-119
AUG	9,143	8,869	-274
SEP	9,253	8,827	-426
OCT	9,357	8,890	-467
NOV		8,908	-
DEC		8,924	-
JAN '22		8,864	-
FEB		8,986	-

Avg. Daily Count (ADC) for 1st week of month

Chart 1 – Actual Correction Population Against the OPM Forecasts
January 1, 2020 through February 1, 2022

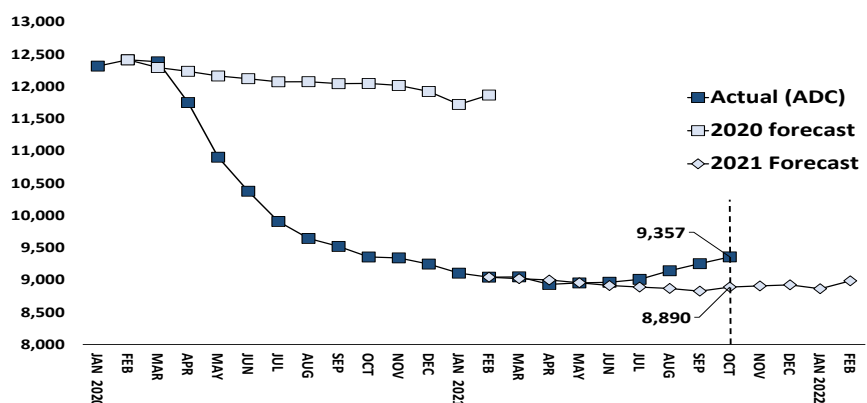


Chart 2 - Criminal Justice, Monthly Counts and Flows

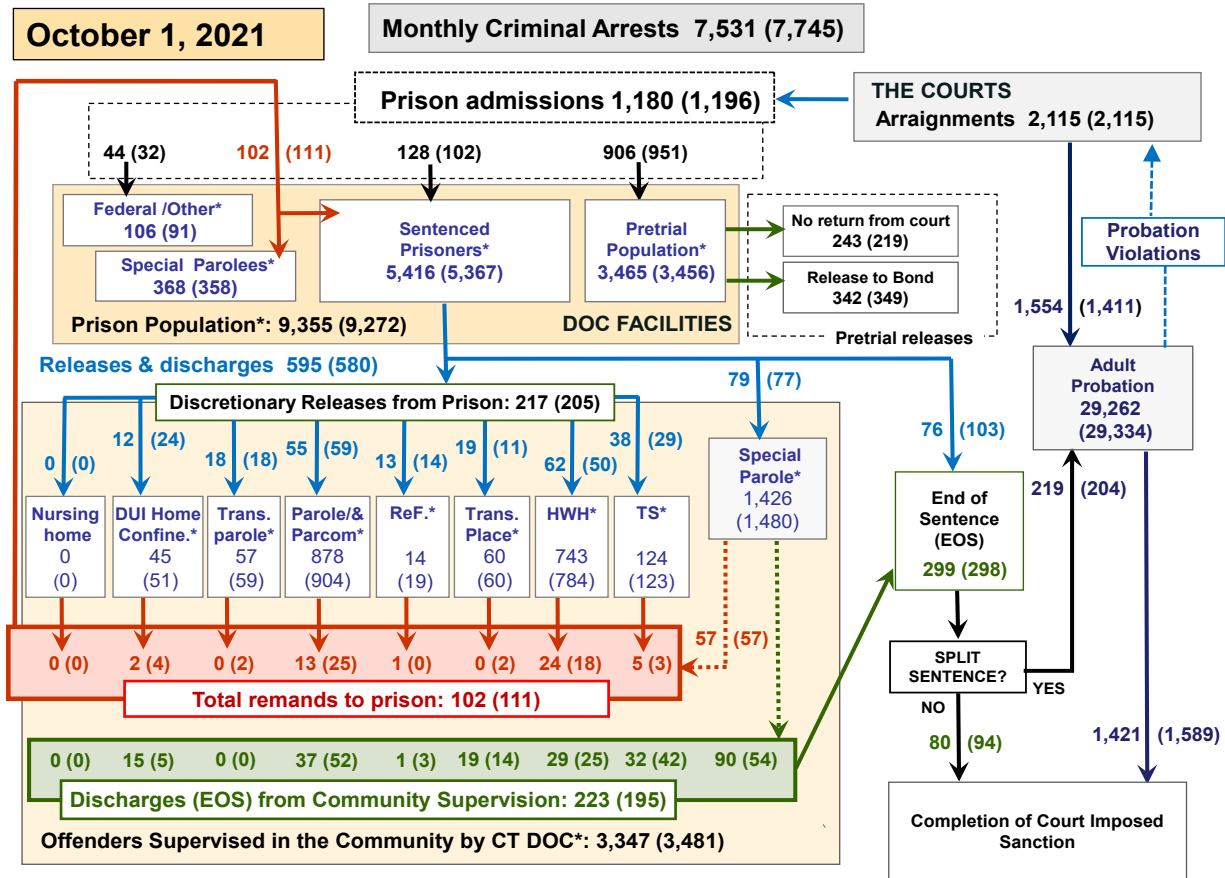
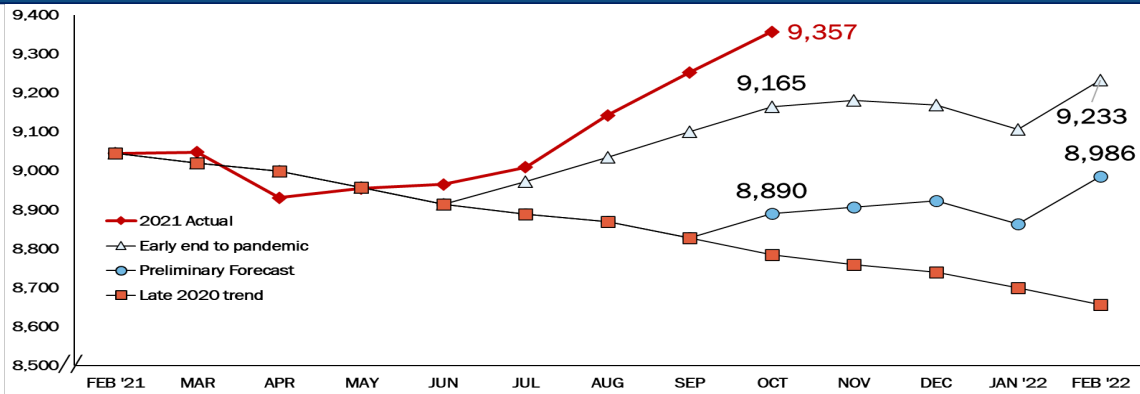


Chart 2 contains monthly operations data for September 2021 and daily counts reported on October 1, 2021. Asterisks (*) indicate the daily count on October 1st. Figures for last month are enclosed by parentheses. Sources: Arrests – CRMVS, via CJIS, Court and probation data - CSSD, all other data - CT DOC.

Spotlight: Comparing Correction Population to Forecast Scenarios



The COVID-19 pandemic caused long-term disruptions to Connecticut's correction trends, which added to the complexity in February 2021 of preparing a forecast.

During OPM's forecasting process, three scenarios were developed: (1) trends observed in late-2020 continue unabated (the line punctuated with red squares in the chart above), (2) pandemic impacts on system operations end early and the correction population begins returning toward long-term trends (white triangles), and (3) the pandemic impacts persist into summer 2021 before abating and beginning a gradual return to long-term trends in fall 2021 (blue circles). OPM's forecast selected the third scenario. The chart above revisits these three

scenarios while adding the actual correction population through October 1.

Recent *Monthly* reports have noted the growing divergence between the actual population and the forecasted population. This chart demonstrates how actual correction trends have surpassed each of the three scenarios. While growth was anticipated in 2021, it occurred earlier and was larger than forecasted. Nevertheless, the October 1 correction population is still slightly below the level one year prior (9,355 compared to 9,381 people).

While OPM still anticipates a slight seasonal decline to close 2021, *Monthly* reports will monitor shifts in the correction population in the intervening months.

Table 2 - First-of-Month Totals

	2021	2021	2021	2020	% Change	
	Aug. 1	Sep. 1	Oct. 1	Oct. 1	Monthly	Annual
DOC Facilities						
Federal/Other	103	91	106	122	16.5%	-13.1%
Sentenced	5,348	5,367	5,416	6,307	0.9%	-14.1%
Special Parole	362	358	368	316	2.8%	16.5%
Pretrial	3,318	3,456	3,465	2,636	0.3%	31.4%
Total	9,131	9,272	9,355	9,381	0.9%	-0.3%
DOC Community						
Transfer Parole	49	59	57	195	-3.4%	-70.8%
Parole/ Parcom Total	934	904	878	955	-2.9%	-8.1%
Parole	756	723	707	780	-2.2%	-9.4%
Parcom @ CT	178	181	171	175	-5.5%	-2.3%
Furlough	21	19	14	45	-26.3%	-68.9%
Trans Placement	68	60	60	80	0.0%	-25.0%
DUI/Home confine.	37	51	45	47	-11.8%	-4.3%
Halfway House Total	793	784	743	869	-5.2%	-14.5%
Comm Release	407	390	362	444	-7.2%	-18.5%
TS	5	8	6	23	-25.0%	-73.9%
Parole	135	138	136	116	-1.4%	17.2%
Transfer Parole	7	7	10	25	42.9%	-60.0%
Special Parole	239	241	229	261	-5.0%	-12.3%
TS	143	123	124	411	0.8%	-69.8%
Nursing home	0	0	0	4	-	-100.0%
Special Parole	1,516	1,480	1,426	2,120	-3.6%	-32.7%
Total	3,565	3,481	3,347	4,726	-3.8%	-29.2%

Table 2a - Monthly Admissions, Releases, & Discharges

	2021	2021	2021	2020	% Change	
	JULY	AUG	SEP	SEP	Monthly	Annual
Admissions						
Federal/Other	28	32	44	32	37.5%	37.5%
Remands	91	111	102	105	-8.1%	-2.9%
DUI	1	4	2	0	-50.0%	-
Transfer Parole	2	2	0	0	-100.0%	-
Parole	21	25	13	13	-48.0%	0.0%
Trans Plac/Furlough	2	2	1	2	-50.0%	-50.0%
HWH	18	18	24	20	33.3%	20.0%
TS	4	3	5	15	66.7%	-66.7%
Special Parole	43	57	57	48	0.0%	18.8%
New Sentence	113	102	128	37	25.5%	245.9%
VOP	23	25	39	5	56.0%	680.0%
Pretrial	901	951	906	658	-4.7%	37.7%
Total	1,133	1,196	1,180	832	-1.3%	41.8%
Releases and discharges						
Transfer Parole	6	18	18	34	0.0%	-47.1%
Parole	52	59	55	56	-6.8%	-1.8%
Furlough	13	14	13	29	-7.1%	-55.2%
Trans. Placement	11	11	19	21	72.7%	-9.5%
Home Confinement DUI	11	24	12	1	-50.0%	1100.0%
HWH	81	50	62	128	24.0%	-51.6%
TS	30	29	38	61	31.0%	-37.7%
Special Parole	76	77	79	80	2.6%	-1.3%
Nursing home	0	0	0	0	-	-
End of Sentence	319	298	299	365	0.3%	-18.1%
Total	599	580	595	775	2.6%	-23.2%
Pretrial Releases*						
From Court	186	219	243	106	11.0%	129.2%
Release to Bond	338	349	342	273	-2.0%	25.3%

* Totals reflect events, not individual offenders

DOC - Community Release Unit (CRU)

Table 3 - Case reviews and release metrics

	Cases				Approval Rate
	Reviewed	Approved	Denied	Continued	
JULY	285	124	39	37	44%
AUG	304	134	46	43	44%
SEP 21	302	137	35	47	45%
SEP 20	361	149	56	45	41%

Note: Figures published here are based on the operational data available at the time of publication. Data in subsequent issues may not agree.

Board of Pardons and Paroles

Table 4 - Parole hearings, new cases

	Parole Hearings	Paroles granted	Grant rate	Granted: Prior Year	Granted: Two Years Prior
JULY	91	64	70%	79	62
AUG	81	57	70%	68	68
SEP	74	52	70%	102	66

Table 4a - Other BOPP actions

	Reparole from revocation	Reparole from rescission	Closed interest cases	Special parole cases	Transfer parole cases
JULY	6	1	12	9	25
AUG	23	1	10	8	17
SEP 2021	12	0	12	12	18
SEP 2020	21	0	13	21	50

The Pretrial Population

Table 5 - Bond ranges for pretrial detainees

	Aug. 1, 2021	Sep. 1, 2021	Oct. 1, 2021	Oct. 1, 2020
Bond amount				
Less than \$20K	364	398	379	328
\$20K to < \$50K	439	423	450	346
\$50K to < \$100K	543	571	588	423
\$100K or higher	2,203	2,237	2,271	1,711
Persons w/bonds	3,549	3,629	3,688	2,808
Over \$1M	373	383	391	265

Table 5a - Pretrial, weeks since admission

Weeks since last DOC admit	Aug. 1, 2021	Sep. 1, 2021	Oct. 1, 2021	Oct. 1, 2020
< 1 week	300	221	290	210
1 to < 3 weeks	236	246	263	167
3 to < 10 weeks	611	700	644	443
10 to < 30 weeks	938	989	1,004	610
30 wks or more	1,466	1,484	1,490	1,383
Pretrial prisoners	3,551	3,640	3,691	2,813

Table 5b - Pretrial admits, new offenders

	JULY 2021	AUG 2021	SEP 2021	SEP 2020
Arraignments	2,009	2,115	2,115	1,665
Pretrial Admits	901	951	906	658
New to DOC	214	217	234	174
% New	24%	23%	26%	26%

Court Support Services Division

Table 6 - The jail reinterview program

	Pretrial admissions	Offender interviews	Offenders released	Released last year
JULY	901	776	213	184
AUG	951	795	180	139
SEP	906	860	245	156

Table 6a - Pretrial bail and probation caseloads

	Pretrial Bail Case Starts	Client Supv. Starts	Split Sentence Starts	Pretrial bail cases
JULY	2,050*	1,239	190	12,665*
AUG	2,050*	1,411	204	12,665*
SEP	2,050*	1,554	219	12,665*
SEP '20	2,050*	529	234	12,665*

* CSSD estimates

Chart 3 – Prison Population

First week of the month, avg. daily count (ADC)

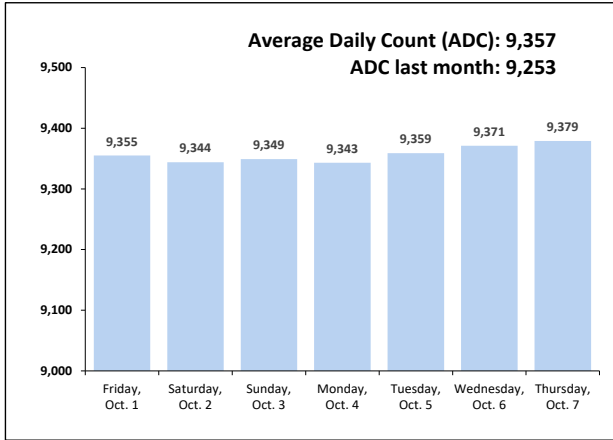


Chart 6 – Monthly DOC Admissions

September 2020 through September 2021

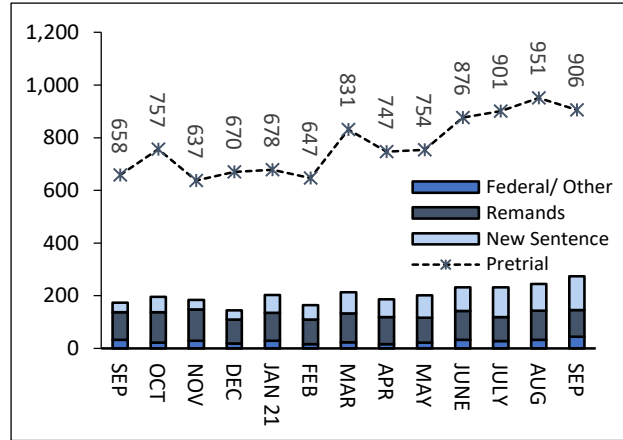


Chart 4 – Prison Population, First-of-Month

2018, 2019, 2020, and 2021

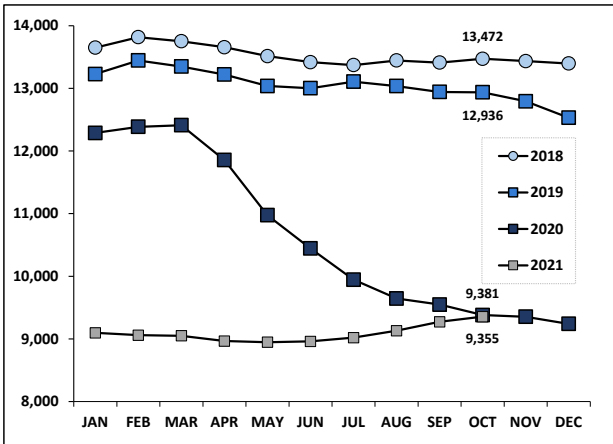


Chart 7– Remands From Community Release

September 2021

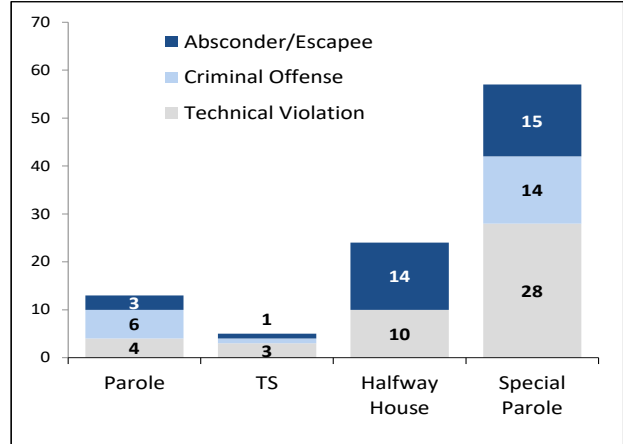


Chart 5 – Statewide Arrests

2020 and 2021

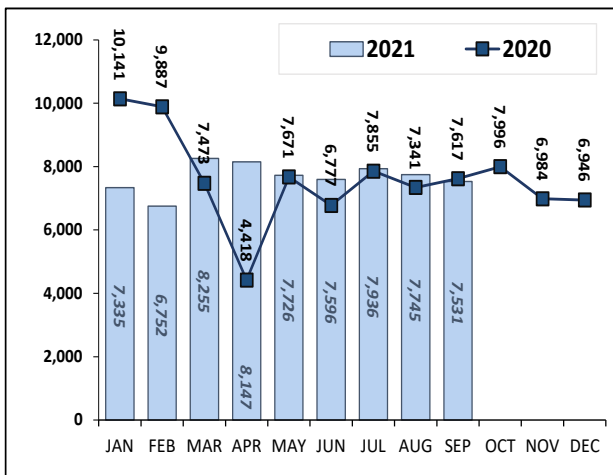
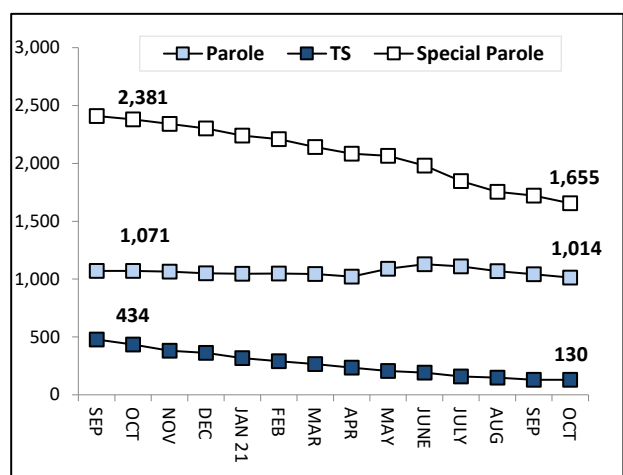


Chart 8 – DOC Community Supervision

Sep. 1, 2020 through Oct. 1, 2021



Note: Data for all charts, except for Chart 5, was supplied by CT DOC. Data for Chart 5 are for new case starts in the state Criminal Motor Vehicle System (CRMVS). Chart 8 includes offenders in halfway houses.