

OPM - Criminal Justice Policy & Planning Division

Monthly Indicators Report

Highlights

- On November 1, 2017, 14,088 people were incarcerated in CT state prisons and jails. The late year decline in the prison population typically begins in November. With that in mind, we expect to see daily counts below 14,000 on consistent basis, in the coming months.
- With the prison population in decline and with no indication of a course change, the DOC announced that it will close Enfield CI in 2018. The prison, which houses approximately 700 inmates, was built in 1962. As current inmates are transferred to other facilities, the DOC notes that none will be housed in non-traditional overflow beds.
- In the new biennial budget, the legislature transferred the jurisdiction of delinquent youth to CSSD, in the Judicial Branch, from the Department of Children and Families (DCF). The change will not impact the impending closure of CJTS in 2018. CSSD currently supervises approximately 2,000 youth on juvenile probation. The change will add approximately 200 youth, who are currently in DCF custody, to the CSSD case load.
- OPM has commenced work on a new recidivism study that is due in February 2018. This report will calculate three-year recidivism rates for sentenced offenders who left prison in 2014. In this report, OPM hopes to put more focus on female offenders.
- Because CSSD is implementing a new data capture and reporting system, most Judicial Branch figures that appear in this issue are estimates, provided to us by CSSD staff. We will update the data in future issues of this report.

Prison Population Forecast

At this point in the year, we typically expect to see a sizeable drop in the prison population. As it happens, the drop we are anticipating this year will take us across a rather significant line of demarcation, a prison population under 14,000. Several years ago, a prison population with fewer than 14,000 inmates seemed barely imaginable.

Between January 2011 and November 2015, CT's prison population shrank from 18,000 prisoners to 16,000 prisoners, a drop of 2,000 in a period of 1,744 days. At the time, this was considered to be a stunning rate of contraction. From our current perspective, that 1,744-day contraction now appears somewhat tame. During the last two years, CT's prison population fell by 2,000 prisoners -from 16,000 to 14,000- in a period of just 716 days. This equates to an average contraction rate of almost 3 inmates per day.

Since 2008, the number of younger prisoners in the DOC has been almost halved (see chart 2a). This is cause for cautious optimism; we anticipate that because fewer young people are entering prison each year, there will be many fewer middle-aged and older prisoners incarcerated in the future. Since the recent past is often the best predictor of the near future, OPM anticipates that its prison population forecast for 2018 will more closely resemble the actual population trend lines of 2016 and 2017 than the model-based trend lines we used in the past.

TABLE 1 – Prison Population Forecast

	Avg. Daily Count	OPM 2017 Forecast	Inmate difference
JAN '17	14,565	-	-
FEB	14,776	14,776	-
MAR	14,646	14,658	12
APR	14,543	14,618	75
MAY	14,491	14,542	51
JUN	14,406	14,532	126
JUL	14,316	14,526	210
AUG	14,162	14,577	415
SEP	14,158	14,586	428
OCT	14,112	14,600	488
NOV	14,081	14,531	450
DEC	-	14,367	-
JAN '18	-	14,139	-
FEB	-	14,308	-

Avg. Daily Count (ADC) for 1st week of month

Chart 1 – Actual prison population against the OPM forecasts
January 1, 2016 through February 1, 2018

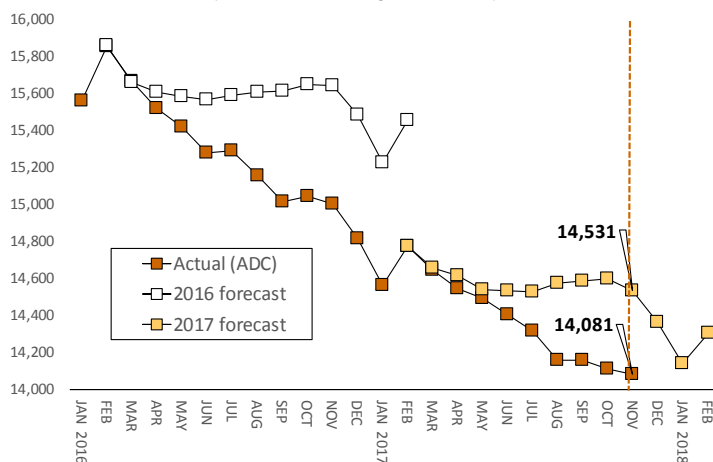


Chart 2 - Criminal justice, monthly counts and flows

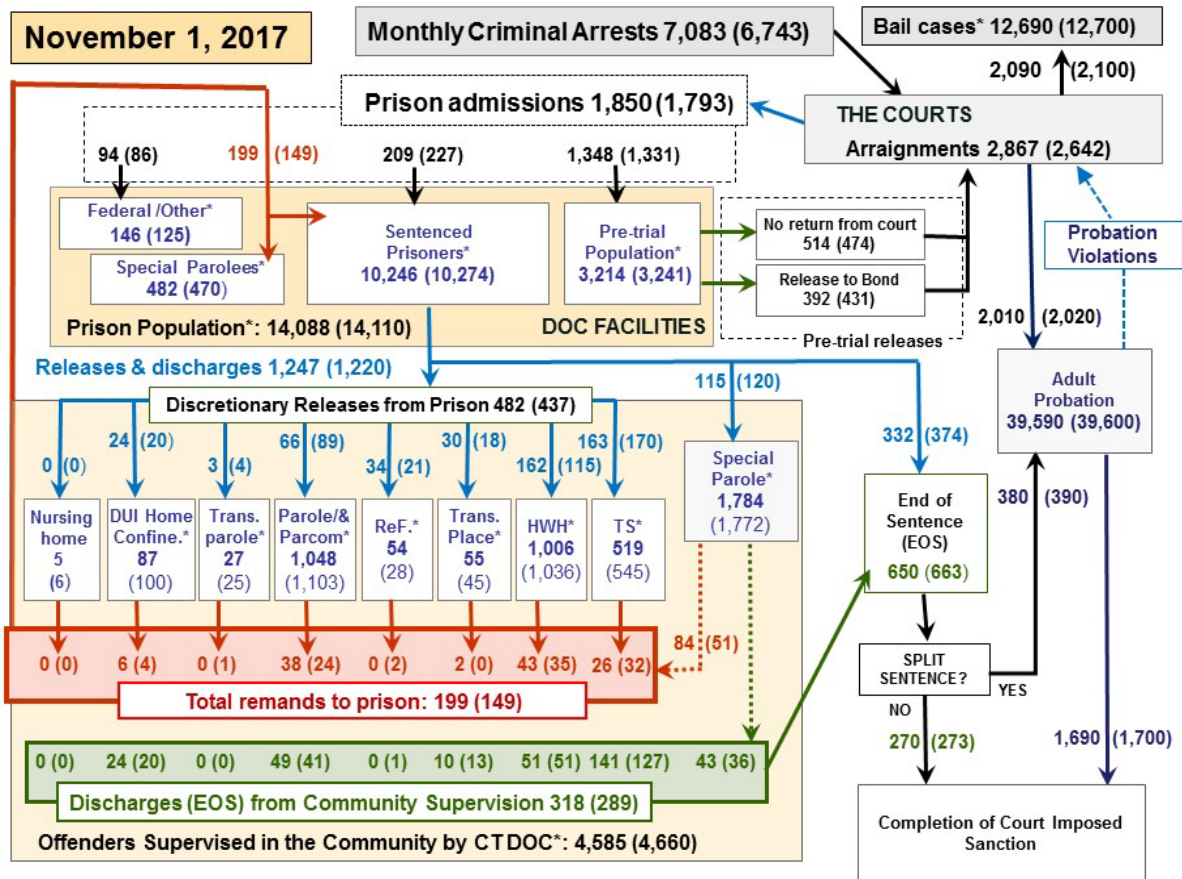
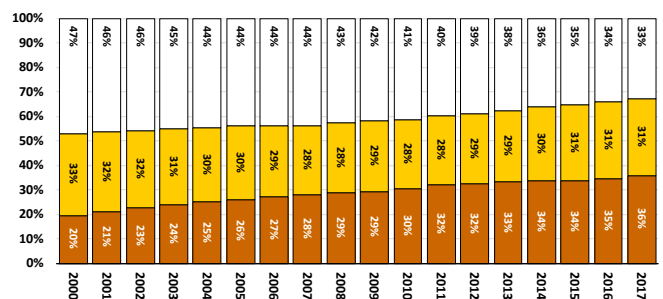
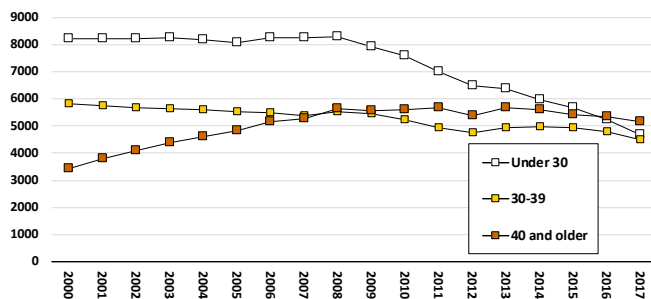


Chart 2 contains monthly operations data for October 2017 and daily counts reported on November 1, 2017. Asterisks (*) indicate the daily count on November 1st. Figures for last month are enclosed by parentheses. Sources: Arrests - OBTS, Court and probation data - CSSD, all other data - CT DOC. Note: Judicial Branch data this month is estimated.

Chart 2a – Changes in the incarcerated population since 2000



The composition of the state's prison population has changed considerably over the last two decades. This change is particularly evident when we consider the age of prisoners incarcerated. In 2000, almost half of all prisoners were under the age of 30, while prisoners over the age of 40 made up less than 20% of the total prison population.

In the intervening years, the percentage of prisoners who are under the age of 30 has dropped from about a half to roughly a third of the total population. Virtually all of the growth between 2000 and 2008 was driven by a dramatic increase in the number of prisoners over the age of 40. This likely reflected changes to CT sentencing laws that resulted in offenders serving longer sentences.

Conversely, since 2008, most of the decline in the state's prison population has been driven by a dramatic drop in the number of young persons – offenders under 30- who are incarcerated. Certainly, factors such as CT's raise-the-age legislation has made a considerable contribution to fewer young people in the prison system. It should be noted, however, that many fewer young people are being arrested these days than in past years.

Between 2000 and 2017, the total prison population declined by almost 18%. The decline among young prisoners, however, was much greater, about 43%. The number of prisoners over the age of 40 rose by almost 50% during this time period.

Table 2 - First-of-month totals

	2017	2017	2017	2016	% Change	
	Sept 1	Oct. 1	Nov. 1	Nov. 1	Monthly	Annual
DOC Facilities						
Federal/Other	129	125	146	149	16.8%	-2.0%
Sentenced	10,324	10,274	10,246	11,152	-0.3%	-8.1%
Special Parole	483	470	482	435	2.6%	10.8%
Pre-trial	3,240	3,241	3,214	3,332	-0.8%	-3.5%
Total	14,176	14,110	14,088	15,068	-0.2%	-6.5%
DOC Community						
Transfer Parole	21	25	27	12	-	-
Parole/ Parcom Total	1,099	1,103	1,048	1,161	-5.0%	-9.7%
Parole	936	943	890	988	-5.6%	-9.9%
Parcom @ CT	163	160	158	183	-1.3%	-13.7%
Furlough	26	28	54	36	92.9%	50.0%
Trans Placement	46	45	55	80	22.2%	-31.3%
DUI/Home confine.	112	100	87	95	-13.0%	-8.4%
Halfway House Total	1,044	1,036	1,006	939	-2.9%	7.1%
Comm Release	512	503	515	474	2.4%	8.6%
TS	61	64	56	57	-12.5%	-1.8%
Parole	160	150	145	158	-3.3%	-8.2%
Transfer Parole	5	3	3	2	-	-
Special Parole	306	313	287	248	-8.3%	15.7%
TS	543	545	519	579	-4.8%	-10.4%
Nursing home	6	6	5	8	-	-
Special Parole	1,763	1,772	1,784	1,617	0.7%	10.3%
Total	4,660	4,660	4,585	4,527	-1.6%	1.3%

Table 2a - Admissions, releases & discharges

	2017	2017	2017	2016	% Change	
	Aug.	Sept.	Oct.	Oct.	Monthly	Annual
Admissions						
Federal/Other	83	86	94	101	9.3%	-6.9%
Remands	165	149	199	131	33.6%	51.9%
DUI	6	5	6	3	20.0%	100.0%
Parole	29	24	38	20	58.3%	90.0%
Trans Plac/Furlough	3	2	0	1	-	-
HWH	28	35	43	19	22.9%	126.3%
TS	36	32	26	32	-18.8%	-18.8%
Special Parole	63	51	84	55	64.7%	52.7%
New Sentence	191	227	209	242	-7.9%	-13.6%
VOP	61	68	83	78	22.1%	6.4%
Pre-trial	1523	1331	1348	1445	1.3%	-6.7%
Total	1,962	1,793	1,850	1,919	3.2%	-3.6%
Releases and discharges						
Transfer Parole	5	4	3	7	-25.0%	-
Parole	117	89	66	104	-25.8%	-36.5%
Furlough	28	21	34	32	61.9%	6.3%
Trans. Placement	33	18	30	13	66.7%	130.8%
Home Confinement DU	43	20	24	25	20.0%	-4.0%
HWH	138	115	162	113	40.9%	43.4%
TS	205	170	163	177	-4.1%	-7.9%
Special Parole	136	120	115	93	-4.2%	23.7%
Nursing home	0	0	0	0	-	-
End of Sentence	685	663	650	712	-2.0%	-8.7%
Total	1,390	1,220	1,247	1,276	2.2%	-2.3%
Pre-trial Releases*						
From Court	538	474	514	495	8.4%	3.8%
Release to Bond	419	431	392	392	-9.0%	0.0%

* Totals reflect events, not individual offenders

DOC - Community Release Unit (CRU)

Table 3 - Case reviews and release metrics

	Cases				Approval Rate
	Reviewed	Approved	Denied	Continued	
August	806	378	119	134	47%
September	690	338	101	94	49%
October	768	347	137	105	45%
Oct. '16	801	341	127	153	43%

Board of Pardons and Paroles

Table 4 - Parole hearings, new cases

	Parole Hearings	Paroles granted	Grant rate	Paroles granted, 2016	Paroles granted, 2015
Aug.	147	70	48%	69	123
Sept.	153	80	52%	97	109
Oct.	179	109	61%	67	93

Table 4a - Other BOPP actions

	Reparole from revocation	Reparole from rescission	Closed interest cases	Special parole cases	Transfer parole cases
Aug.	53	4	19	34	7
Sept.	44	2	17	35	1
Oct.	34	1	12	36	1
Oct '16	40	5	14	47	7

The pre-trial population

Table 5 - Bond ranges for pre-trial detainees

Bond amount	Sept. 1, 2017	Oct. 1, 2017	Nov. 1, 2017	Nov. 1, 2016
Less than \$20K	558	547	554	632
\$20K to < \$50K	549	536	530	528
\$50K to <\$100K	728	716	709	718
\$100K or higher	1,532	1,521	1,579	1,474
Persons w/bonds	3,367	3,320	3,372	3,352
Over \$1M	158	152	161	144

Table 5a - Pre-trial, weeks since admission

Weeks since last DOC admit	Sept. 1, 2017	Oct. 1, 2017	Nov. 1, 2017	Nov. 1, 2016
< 1 week	411	442	443	395
1 to < 3 weeks	404	357	339	443
3 to < 10 weeks	805	826	798	854
10 to < 30 weeks	929	883	979	905
30 wks or more	820	813	815	757
Pre-trial prisoners	3,369	3,321	3,374	3,354

Table 5b - Pre-trial admits, new offenders

	Aug. 2017	Sept. 2017	Oct. 2017	Oct. 2016
Arraignments	3,015	2,642	2,867	2,828
Pre-trial Admits	1,523	1,331	1,348	1,445
New to DOC	397	339	354	410
% New	26%	25%	26%	28%

Court Support Services Division

Table 6 - The Jail Re-interview Program

	Pre-trial admissions	Offender interviews	Offenders released	Released last year
August	1,523	1,225	426	541
Sept.	1,331	1,088	392	441
Oct.	1,348	1,067	380	428

Table 6a - Pre-trial bail and probation caseloads

	Pre-trial Bail Case Starts	Client Supv. Starts	Split Sentence Starts	Pre-trial bail cases
Aug.	2,100*	2,030*	390*	12,730*
Sept.	2,100*	2,020*	390*	12,700*
Oct.	2,090*	2,010*	380*	12,690*
Oct. 2016	2,310	2,114	403	13,074

Note: Figures published here are based on the operational data available at the time of publication. Data in subsequent issues may not agree.

Chart 3 – Prison population

First week of the month, avg. daily count (ADC)

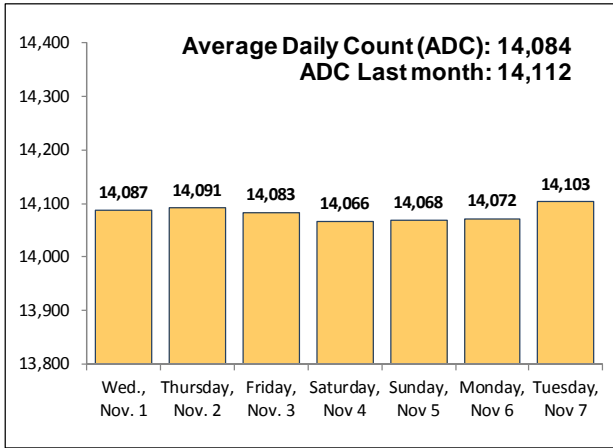


Chart 6 – Monthly DOC Admissions

September 2016 through October 2017

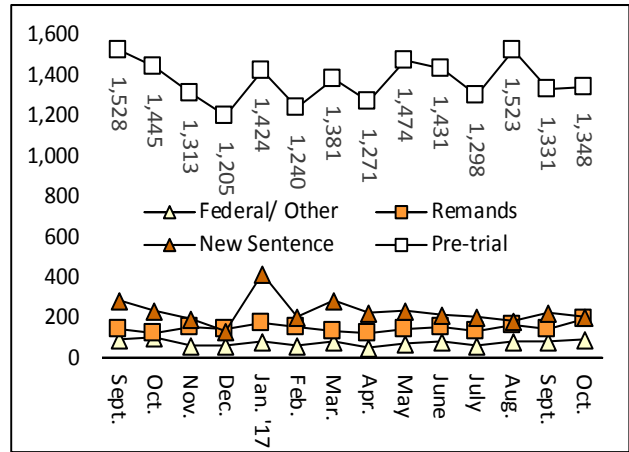


Chart 4 – Prison population, first-of-month

2015, 2016 and 2017

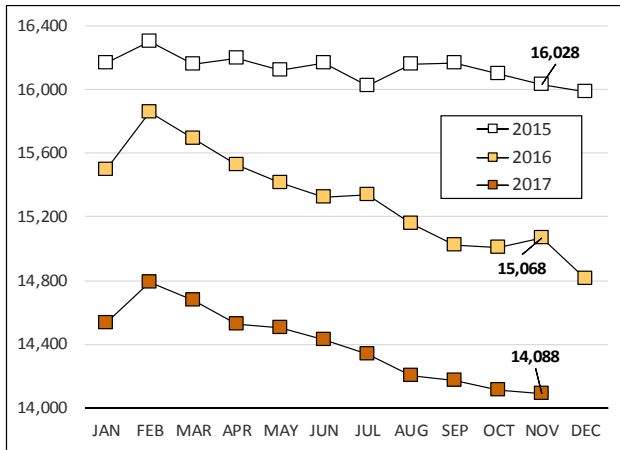


Chart 7– Remands from community release

October 2017

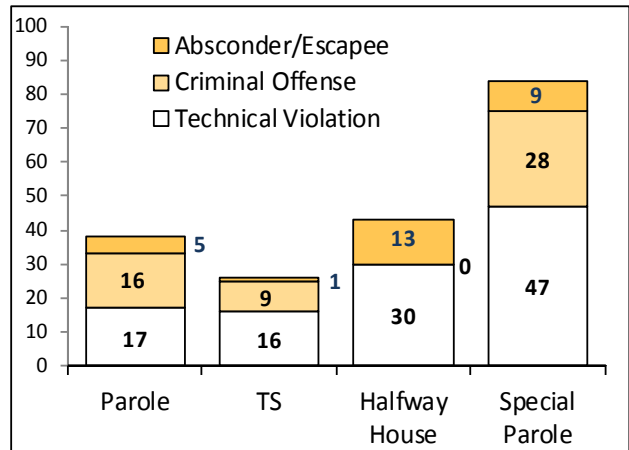


Chart 5 – Statewide criminal arrests

2016 and 2017

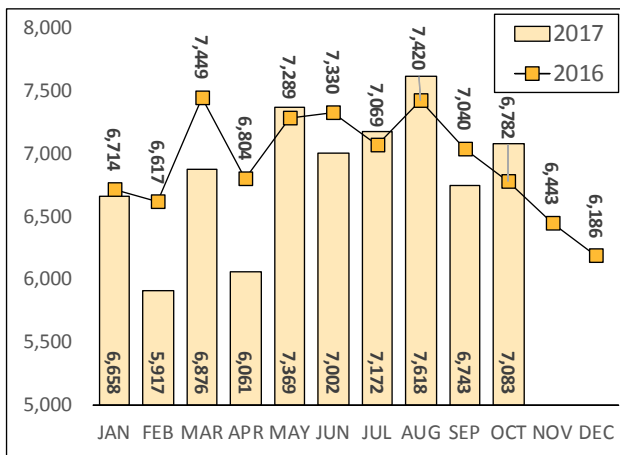
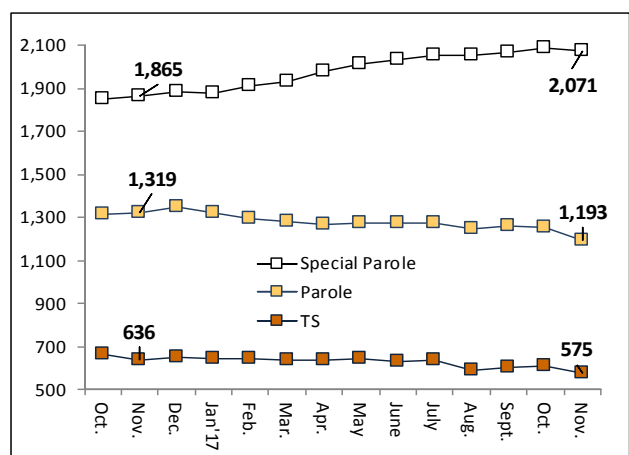


Chart 8 – DOC community supervision

October 1, 2016 through November 1, 2017



Note: Data for all charts, with the exception of Chart 5, was supplied by CT DOC. Data for Chart 5 are for new case starts in the state Offender-Based Tracking System (OBTS). Chart 8 includes offenders in halfway houses.