

OPM - Criminal Justice Policy & Planning Division

Monthly Indicators Report

Highlights

- On March 1st, 14,679 prisoners were held in state prisons and jails. A year ago there were 15,691 prisoners in CT DOC facilities. While the total population was down 6.4%, the sentenced portion of the population was down 8.1% (see Table 2).
- Given the dramatic decline in the prison population over the past year, Governor Malloy is proposing closing a prison during the coming year. Last year, the DOC was able to close the Q-blocks at Osborn CI.
- OPM recently completed the analysis for a recidivism study of sex offenders who left prison in 2011. The study followed offenders for five years tracking new arrests, new convictions and readmissions to prison. Not surprisingly, the overall findings, which will be published during the spring, are similar to the findings of OPM's 2012 study.
- As part of its recidivism study of men who left prison in 2011, OPM analyzed prison readmissions by all offenders in the cohort. Of 11,496 men who exited prison in 2011, 7,092 were readmitted within 5 years. As a group, these 7,092 men account for 17,400 prison admits over the next 5 years. One offender was readmitted to prison 31 times within the 5-year study window (see Chart 2a).
- Arrests, arraignments and pre-trial admissions were all down significantly in February compared to a year ago.
- DOC community supervision caseloads, with the exception of Special Parole, were flat compared to a year ago (see Chart 8).

Prison Population Forecast

OPM's prison population forecast was off by only 12 offenders last month. While this is good news, a cursory look at last year's forecast should be enough to subdue the impulse to break out champagne. Projecting the state's prison population is becoming increasingly complicated by the simple fact that there is no historical data to help us predict how the system might react to unanticipated internal and external impacts.

The prison population has fallen in every year since 2008. On March 1st 2017, the total prison population was 25.6% smaller than it was on the same date in 2008. The sentenced population is down by almost 30%.

In its February 2017 forecast, published last month, OPM anticipated that the rate of contraction we witnessed in the prison population last year would ease as the last efficiencies emanating from the creation of a centralized unit to review prisoner releases were realized. This view was bolstered, to some degree, by data from the last several months of 2016. Nevertheless, it is possible that new and unforeseen forces could combine to exert further downward pressure on the prison population.

OPM will continue to monitor the DOC population closely.

TABLE 1 – Prison Population Forecast

	Avg. Daily Count	OPM 2017 Forecast	Inmate difference
JAN '17	14,565	-	-
FEB	14,776	14,776	-
MAR	14,646	14,658	12
APR	-	14,618	-
MAY	-	14,542	-
JUN	-	14,532	-
JUL	-	14,526	-
AUG	-	14,577	-
SEP	-	14,586	-
OCT	-	14,600	-
NOV	-	14,531	-
DEC	-	14,367	-
JAN '18	-	14,139	-
FEB	-	14,308	-

Avg. Daily Count (ADC) for 1st week of month

Chart 1 – Actual prison population against the OPM forecasts
January 1, 2016 through February 1, 2018

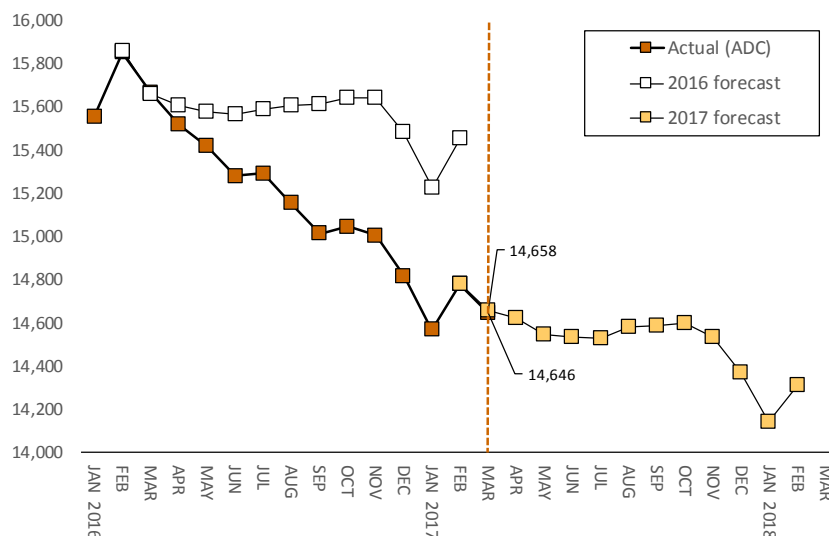


Chart 2 - Criminal justice, monthly counts and flows

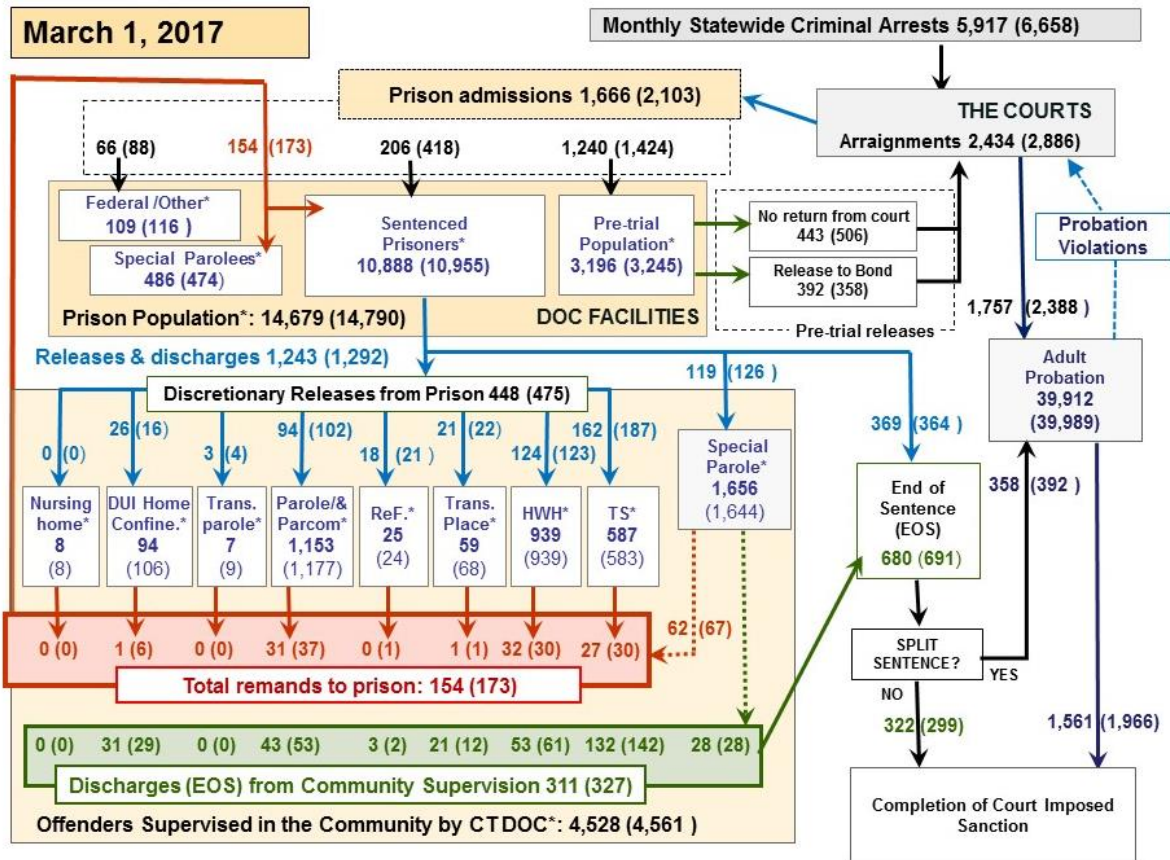
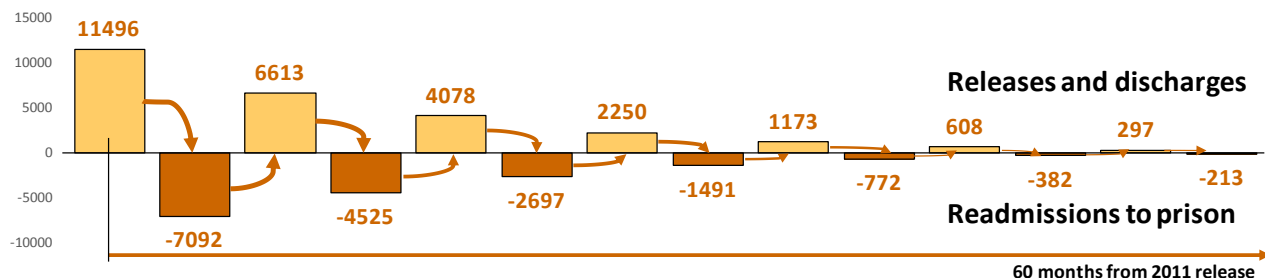


Chart 2 contains monthly operations data for February 2017 and daily counts reported on March 1, 2017. Asterisks (*) indicate the daily count on March 1st. Figures for last month are enclosed by parentheses. Sources: Arrests - OBTS, Court and probation data - CSSD, all other data - CT DOC.

Chart 2a – What recidivism actually looks like in CT



OPM recently completed a recidivism analysis of 11,496 sentenced, male offenders who left prison in 2011. The men were tracked for 5 years. During that time, 61.7% - or 7,092 of these men - were readmitted prison at least once. While a 61.7% recidivism rate might appear disquieting, the actual pattern of returns-to-prison suggests that recidivism is a deeper, more complex problem than the overall recidivism rate, alone, suggests.

Of the 7,092 men who were readmitted to prison, 6,613 were released for a 2nd time within 5 years. Among these men, 68% (4,525) were readmitted to prison within 5 years. Chart 2a tracks the number of offenders who were released and readmitted within 5 years, out to the 7th return to prison. One offender in the study was released and readmitted to prison again 31 times within 60 months of his

2011 release. Given multiple readmissions by offenders, the 7,092 offenders who were readmitted to prison accounted for 17,400 separate prison admissions within 5 years. OPM calculated the total prison-bed capacity associated with all of these readmissions at 3.6 million prisoner-bed days. Assuming a rather conservative estimate of \$32.00 per prison-bed day, the cost of recidivism among the 2011 cohort was at least \$117 million.

In the Sept. 2016 issue of this paper, we compared 1-year recidivism rates for prisoners released in 2011 and 2014. Even though return-to-prison rates had remained constant, we found that because fewer people were passing through the prison system in 2014, 790 fewer prisoners were readmitted to prison within a year. This translated into 19.1% fewer readmission events in 2014 than in 2011.

Table 2 - First-of-month totals

	2016	2017	2017	2016	% Change	
	Jan.1	Feb. 1	Mar. 1	Mar. 1	Monthly	Annual
DOC Facilities						
Federal/Other	132	116	109	166	-6.0%	-34.3%
Sentenced	10,748	10,955	10,888	11,846	-0.6%	-8.1%
Special Parole	458	474	486	484	2.5%	0.4%
Pre-trial	3,194	3,245	3,196	3,195	-1.5%	0.0%
Total	14,532	14,790	14,679	15,691	-0.8%	-6.4%
DOC Community						
Transfer Parole	11	9	7	0	-	-
Parole/ Parcom Total	1,194	1,177	1,153	1,067	-2.0%	8.1%
Parole	1,020	997	977	888	-2.0%	10.0%
Parcom @ CT	174	180	176	179	-2.2%	-1.7%
Furlough	24	27	25	39	-7.4%	-35.9%
Trans Placement	71	68	59	72	-13.2%	-18.1%
DUI/Home confine.	130	106	94	71	-11.3%	32.4%
Halfway House Total	929	939	939	934	0.0%	0.5%
Comm Release	508	493	486	478	-1.4%	1.7%
TS	45	61	50	41	-18.0%	22.0%
Parole	126	120	125	151	4.2%	-17.2%
Transfer Parole	0	0	0	0	-	-
Special Parole	249	265	278	264	4.9%	5.3%
TS	601	583	587	605	0.7%	-3.0%
Nursing home	9	8	8	8	-	-
Special Parole	1,630	1,644	1,656	1,418	0.7%	16.8%
Total	4,599	4,561	4,528	4,214	-0.7%	7.5%

Table 2a - Admissions, releases & discharges

	2016	2016	2017	2016	% Change	
	Dec.	Jan.	Feb.	Feb.	Monthly	Annual
Admissions						
Federal/Other	68	88	66	84	-25.0%	-21.4%
Remands	145	173	154	126	-11.0%	22.2%
DUI	3	6	1	1	-83.3%	0.0%
Parole	26	37	31	25	-16.2%	24.0%
Trans Plac/Furlough	3	2	1	2	-	-
HWH	27	30	32	10	6.7%	220.0%
TS	21	30	27	36	-10.0%	-25.0%
Special Parole	65	67	62	52	-7.5%	19.2%
New Sentence	141	418	206	307	-50.7%	-32.9%
VOP	51	106	67	81	-36.8%	-17.3%
Pre-trial	1,205	1,424	1,240	1,270	-12.9%	-2.4%
Total	1,559	2,103	1,666	1,787	-20.8%	-6.8%
Releases and discharges						
Transfer Parole	4	4	3	0	-25.0%	-
Parole	93	102	94	116	-7.8%	-19.0%
Furlough	20	21	18	30	-14.3%	-40.0%
Trans. Placement	25	22	21	16	-4.5%	31.3%
Home Confinement DU	40	16	26	21	62.5%	23.8%
HWH	157	123	124	133	0.8%	-6.8%
TS	185	187	162	197	-13.4%	-17.8%
Special Parole	102	126	119	99	-5.6%	20.2%
Nursing home	0	0	0	2	-	-
End of Sentence	713	691	680	686	-1.6%	-0.9%
Total	1,339	1,292	1,247	1,300	-3.5%	-4.1%
Pre-trial Releases*						
From Court	458	506	443	515	-12.5%	-14.0%
Release to Bond	410	358	392	373	9.5%	5.1%

* Totals reflect events, not individual offenders

DOC - Community Release Unit (CRU)

Table 3 - Case reviews and release metrics

	Cases				Approval
	Reviewed	Approved	Denied	Continued	Rate
Dec.	841	378	148	132	45%
Jan. '17	792	358	126	141	45%
Feb.	768	380	105	122	49%
Feb. '16	917	448	130	137	49%

Board of Pardons and Paroles

Table 4 - Parole hearings, new cases

	Parole Hearings	Paroles granted,		Paroles granted, 1 yr. prior	Paroles granted, 2 yrs. prior
		2016	Grant rate		
Dec.	175	95	54%	122	107
Jan. '17	149	77	52%	102	81
Feb.	191	100	52%	75	88

Table 4a - Other BOPP actions

	Reparole from revocation	Reparole from rescission	Closed interest cases	Special parole cases	Transfer parole cases
Dec.	36	3	44	31	4
Jan. '17	52	4	30	22	5
Feb. '17	38	4	21	36	1
Feb. '16	41	6	13	41	0

The pre-trial population

Table 5 - Bond ranges for pre-trial detainees

Bond amount	Jan. 1, 2017	Feb. 1, 2017	Mar. 1, 2017	Mar. 1, 2016
Less than \$20K	580	574	530	519
\$20K to <\$50K	551	566	555	556
\$50K to <\$100K	700	737	723	688
\$100K or higher	1,441	1,437	1,444	1,495
Persons w/bonds	3,272	3,314	3,252	3,258
Over \$1M	147	145	149	165

Table 5a - Pre-trial, weeks since admission

Weeks since last DOC admit	Jan. 1, 2017	Feb. 1, 2017	Mar. 1, 2017	Mar. 1, 2016
< 1 week	345	475	433	386
1 to < 3 weeks	305	371	308	343
3 to < 10 weeks	797	691	822	903
10 to < 30 weeks	1,048	1,012	926	911
30 wks or more	780	767	767	718
Pre-trial prisoners	3,275	3,316	3,256	3,261

Table 5b - Pre-trial admits, new offenders

	Dec. 2016	Jan. 2017	Feb. 2017	Feb. 2016
Arraignments	2,571	2,886	2,434	2,636
Pre-trial Admits	1,205	1,424	1,240	1,270
New to DOC	347	382	335	342
% New	29%	27%	27%	27%

Court Support Services Division

Table 6 - The Jail Re-interview Program

	Pre-trial admissions	Offender interviews	Offenders released	Released last year
Dec.	1,205	950	474	883
Jan. '17	1,424	1,024	449	872
Feb.	1,240	899	390	776

Table 6a - Pre-trial bail and probation caseloads

	Pre-trial Bail Case Starts	Client Supv. Starts	Split Sentence Starts	Pre-trial bail cases
Dec.	1,986	2,042	395	13,070
Jan. '17	2,223	2,388	392	13,041
Feb.	1,902	1,757	358	12,750
Feb. '16	2,162	2,130	355	13,746

Note: Figures published here are based on the operational data available at the time of publication. Data in subsequent issues may not agree.

Chart 3 – Prison population

First week of the month, avg. daily count (ADC)

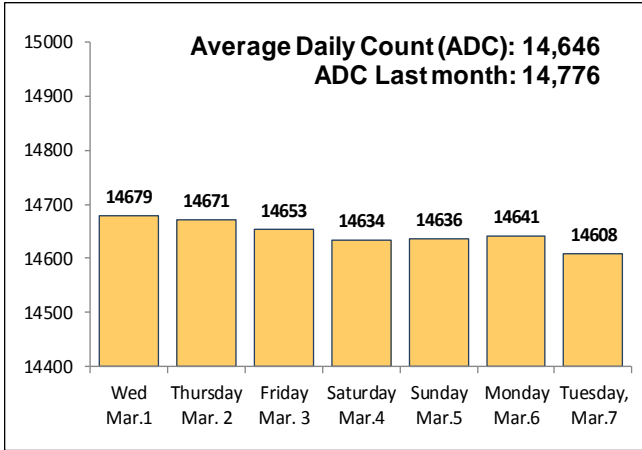


Chart 6 – Monthly DOC Admissions

January 2016 through February 2017

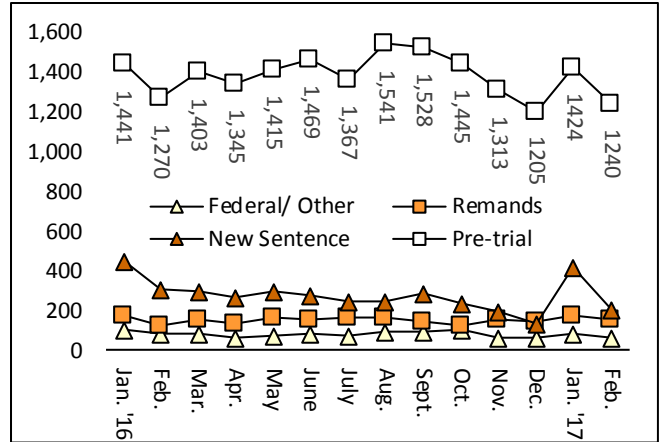


Chart 4 – Prison population, first-of-month

2015, 2016 and 2017

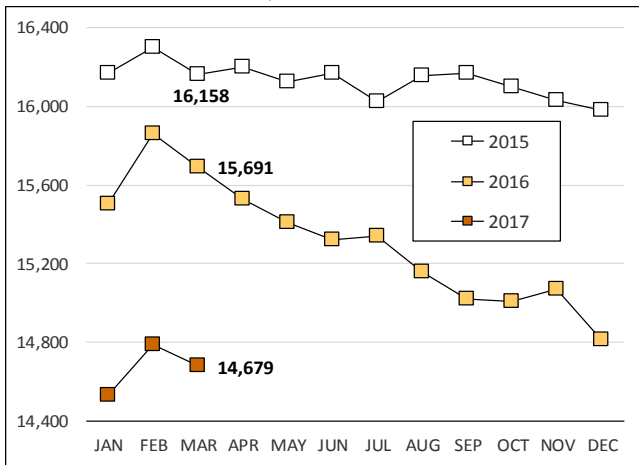


Chart 7 – Remands from community release

January 2017

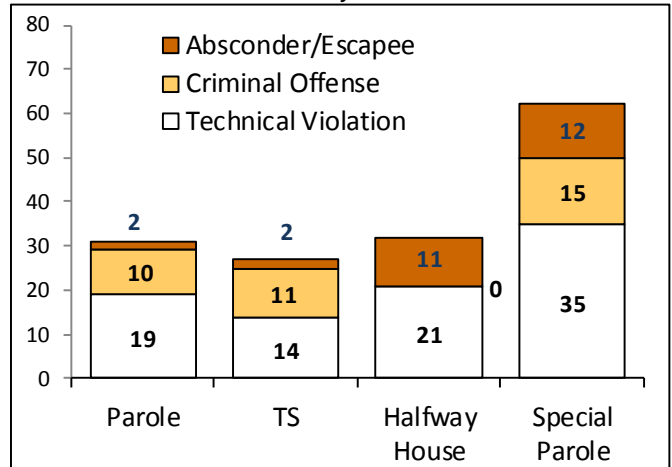


Chart 5 – Statewide criminal arrests

2016 and 2017

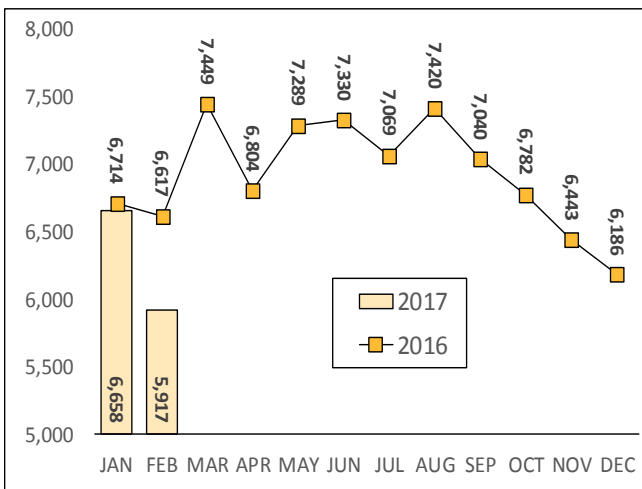
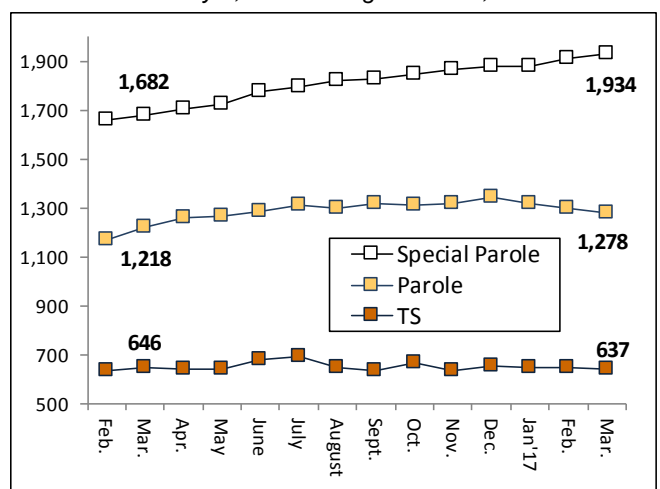


Chart 8 – DOC community supervision

February 1, 2016 through March 1, 2017



Note: Data for all charts, with the exception of Chart 5, was supplied by CT DOC. Data for Chart 5 are for new case starts in the state Offender-Based Tracking System (OBTS). Chart 8 includes offenders in halfway houses.