

OPM - Criminal Justice Policy & Planning Division

Monthly Indicators Report

Highlights

- On March 1, 2015, 16,158 people were incarcerated in Connecticut prisons. Last year, on the same date, the prisons held 16,626.
- By the end of the first week of March, the prison population dropped to 16,068 (see chart 3). The last time the prison population fell to this level was over 16 years ago, in August 1998.
- The central records unit at the DOC recently updated its files. As a result, the number of special parolees in prison, on remand, jumped by 100 between February 1st and March 1st (see chart 2). If the March 1 figure of 546 is accurate, it means there are 1,974 special parolees in DOC custody in prison and the community.
- The types of offenders supervised in the community by the DOC has changed gradually over time. One significant change has been an overall increase in the number of special parolees. In January 2010, for example, 19% of the 4,806 offenders in community supervision programs were special parolees. Today, about 37% of offenders under DOC community supervision are special parolees (see chart 8).
- Chart 2a contains data on pre-trial admissions during the month of February going back to 2005. The chart shows that the number of pre-trial admissions during this month have dropped by 35% over the last decade. The total number of pre-trial detainees is also down. On Feb. 1, 2005 there were 3,735 prisoners on pre-trial status; this year there were 3,205.

Please send comments to:
opmmir@ct.gov

Prison Population Forecast

The state's prison population fell by 144 prisoners during February. Although it is too early to judge the ultimate accuracy of OPM's 2015 forecast, this monthly decline is on target with OPM's projection.

The governor submitted his budget to the legislature this month. In it, the administration anticipates closing the equivalent of a prison facility during the coming year. DOC Commissioner Semple is also moving forward to create a center at Willard-Cybulski that will prioritize offenders who are preparing for re-entry and centralize programming and services targetted at these offenders as they near the completion of their sentences. If the re-entry center succeeds, it could help to eliminate some of the inefficiencies and

redundancies that currently exist within an often cumbersome re-entry system. A quick look at chart 2 reveals some of the complexity that is built into existing offender release and discharge structures. Greater efficiency in this area could very well translate into fewer prisoners.

In recent years, OPM has proven to be cautious in forecasting the rate at which the state's prison population could contract. Although this year's population forecast is also conservative, if accurate, by year's end, the prison population will be in a range not seen since 1997.

TABLE 1 – Prison Population Forecast

	Avg. Daily Count	OPM 2015 Forecast	Inmate difference
JAN '15	16,204	-	-
FEB	16,302	16,343	41
MAR	16,124	16,136	12
APR	-	16,079	-
MAY	-	16,052	-
JUN	-	16,039	-
JUL	-	16,061	-
AUG	-	16,078	-
SEP	-	16,085	-
OCT	-	16,117	-
NOV	-	16,112	-
DEC	-	15,948	-
JAN '16	-	15,686	-
FEB	-	15,917	-

Avg. Daily Count (ADC) for 1st week of month

Chart 1 – Actual prison population against the OPM forecasts
January 1, 2014 through February 1, 2016

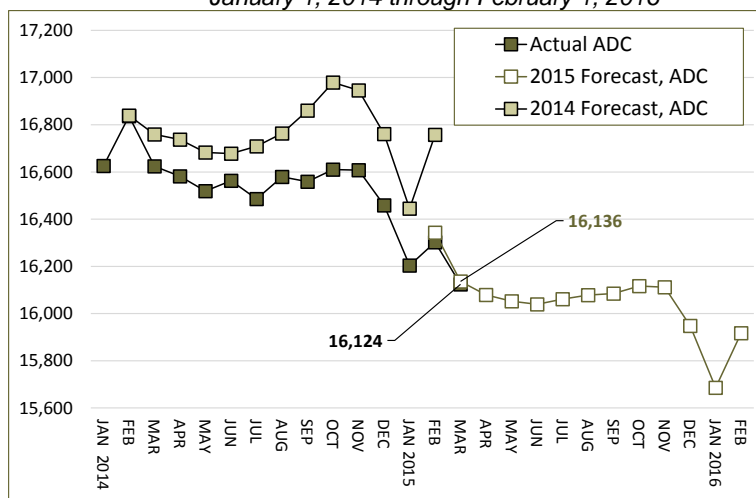
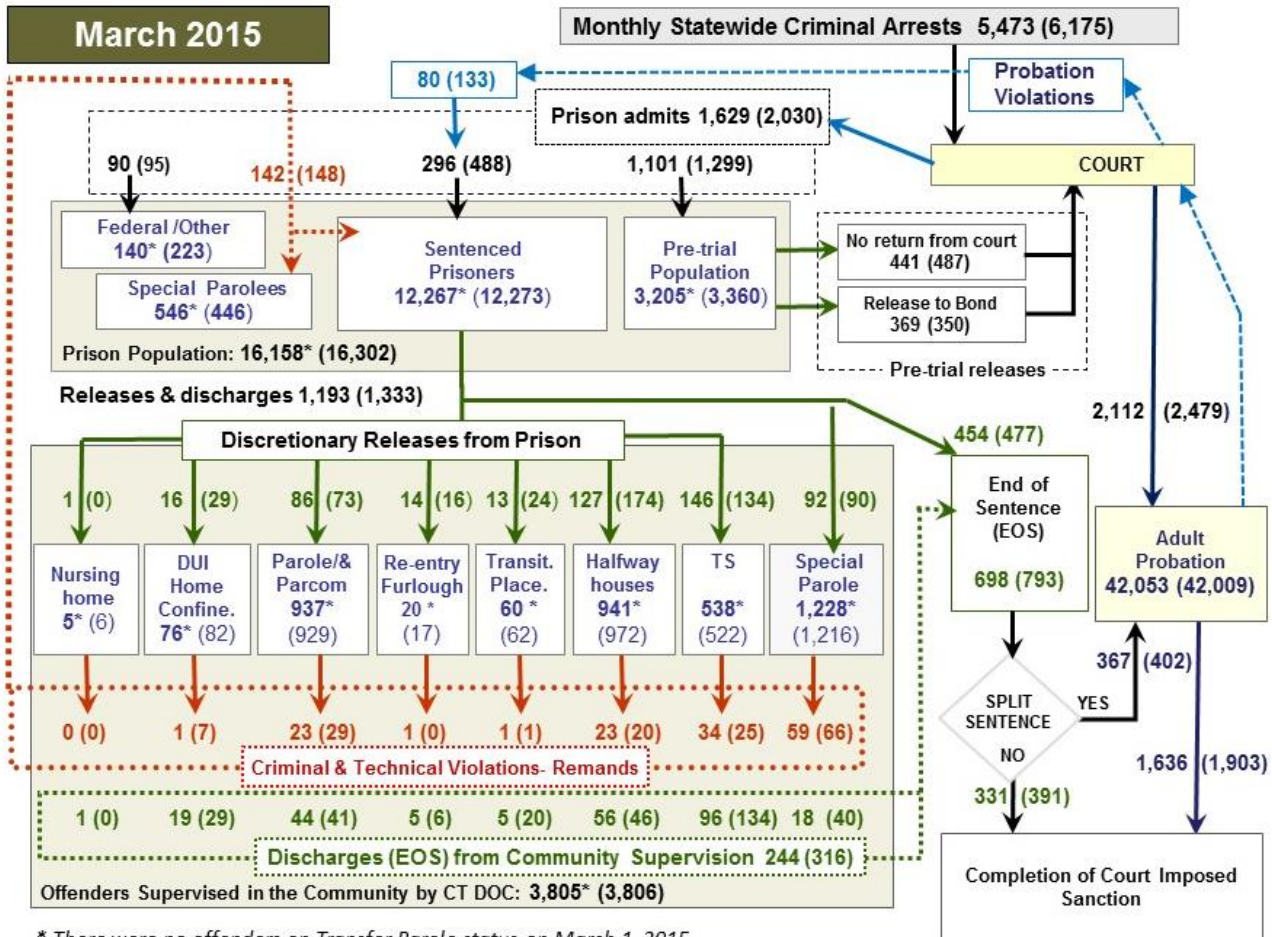


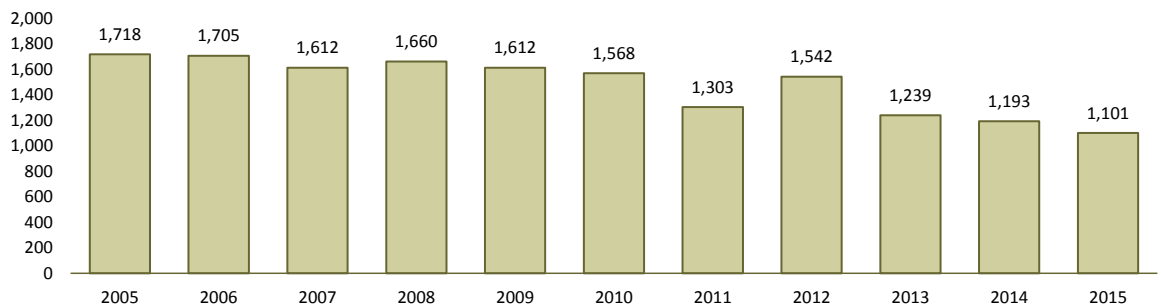
Chart 2 - Criminal justice, monthly counts and flows



* There were no offenders on Transfer Parole status on March 1, 2015.

Chart 2 contains monthly, operations data for February 2015 and daily counts reported on March 1, 2015. Figures followed by asterisks (*) indicate the daily count on March 1st. Last month's figures are enclosed by parentheses. Sources: Arrests - OBTS, Court and probation data - CSSD, all other data - CT DOC.

Chart 2a – Pre-trial admissions in February



Over the last 10 years, the prison population in Connecticut has declined significantly. A major factor has been a relatively steady drop in the number of people admitted to prison each year. In February 2005, 1,718 people were admitted to prison as pre-trial detainees. This February 1,101 were admitted, an overall 35% reduction over the last decade.

No single factor can be credited for the impressive drop in admissions. Significant changes to the bail process, designed and implemented by CSSD, have certainly been critical. An overall drop in the

number of statewide criminal arrests has also contributed to these declining numbers.

The number of new people being admitted to prison in recent years has also been dropping. Table 5b tracks persons admitted to prison on pre-trial status who have no prior history of incarceration with the CT DOC. An analysis performed by OPM revealed that the percentage of new people being admitted to prison has been declining for several years. In 2008, 29.3% people admitted, pre-trial, had no prior history with DOC. By 2014, that number had fallen to 25.6%

Table 2 – The first-of-the-month totals

	2015	2015	2015	2014	% Change	
	Jan. 1	Feb.1	Mar. 1	Mar. 1	Monthly	Annual
DOC Facilities						
Federal/Other	213	223	140	169	-37.2%	-17.2%
Sentenced	12,063	12,273	12,267	12,553	0.0%	-2.3%
Special Parole	449	446	546	406	22.4%	34.5%
Pre-trial	3,442	3,360	3,205	3,498	-4.6%	-8.4%
Total	16,167	16,302	16,158	16,626	-0.9%	-2.8%
DOC Community						
Transfer Parole	0	0	0	1	-	-
Parole/ Parcom Total	929	929	937	1,058	0.9%	-11.4%
Parole	761	762	769	893	0.9%	-13.9%
Parcom @ CT	168	167	168	165	0.6%	1.8%
Furlough	16	17	20	12	-	-
Trans Placement	72	62	60	117	-3.2%	-48.7%
DUI/Home confine.	92	82	76	94	-7.3%	-19.1%
Halfway House Total	943	972	941	997	-3.2%	-5.6%
Comm Release	646	677	647	711	-4.4%	-9.0%
TS	26	23	21	27	-8.7%	-22.2%
Parole	87	78	73	75	-6.4%	-2.7%
Transfer Parole	0	0	0	0	-	-
Special Parole	184	194	200	184	3.1%	8.7%
TS Total	562	522	538	609	3.1%	-11.7%
Nursing home	6	6	5	4	-	-
Special Parole	1,233	1,216	1,228	1,163	1.0%	5.6%
Total	3,853	3,806	3,805	4,055	0.0%	-6.2%

Table 3 – Admissions, releases & discharges*

	2014	2014	2015	2014	% Change	
	Dec.	Jan.	Feb.	Feb.	Monthly	Annual
Admissions						
Federal/Other	124	95	90	71	-5.3%	26.8%
Remands	147	148	142	163	-4.1%	-12.9%
Trans.Parole / DUI	1	7	1	4	-	-
Parole	25	29	23	36	-20.7%	-36.1%
Trans Plac/Furlough	2	1	2	3	-	-
HWH	35	20	23	42	15.0%	-45.2%
TS	30	25	34	32	36.0%	6.3%
Special Parole	54	66	59	46	-10.6%	28.3%
New Sentence	186	488	296	280	-39.3%	5.7%
VOP	58	133	80	64	-39.8%	25.0%
Pre-trial	1,418	1,299	1,101	1,193	-15.2%	-7.7%
Total	1,875	2,030	1,629	1,707	-19.8%	-4.6%
Releases and discharges						
Transfer Parole	0	0	0	0	-	-
Parole	67	73	86	84	17.8%	2.4%
Furlough	17	16	14	9	-12.5%	55.6%
Trans. Placement	23	24	13	23	-45.8%	-43.5%
Home Confinement DUI	42	29	16	27	-44.8%	-40.7%
HWH	140	174	127	131	-27.0%	-3.1%
TS	158	134	146	186	9.0%	-21.5%
Special Parole	90	90	92	71	2.2%	29.6%
Nursing home	0	0	1	0	-	-
End of Sentence	819	793	698	725	-12.0%	-3.7%
Total	1,356	1,333	1,193	1,256	-10.5%	-5.0%
Pre-trial Releases*						
No return from Court	534	487	441	457	-9.4%	-3.5%
Release to Bond	481	350	369	436	5.4%	-15.4%

* Totals reflect events not individuals.

Board of Pardons and Paroles

Table 4 – Parole hearings, new cases

	Parole Hearings	Paroles granted	Grant rate	Paroles granted, 1 year prior	Paroles granted, 2 years prior
Dec.	193	107	55%	117	110
Jan. '15	155	81	52%	96	122
Feb.	161	88	55%	103	121

Table 4a – Other parole actions

	Reparole from revocation	Reparole from rescission	Closed interest cases	Special parole cases
Dec.	34	1	44	45
Jan. '15	28	9	29	62
Feb.	22	7	29	41

Pre-trial detainees

Table 5 – Bond ranges for pre-trial detainees

Bond amount	Jan. 1, 2015	Feb. 1, 2015	Mar. 1, 2015	Mar. 1, 2014
Less than \$20K	642	613	560	597
\$20K to <\$50K	588	555	508	591
\$50K to <\$100K	774	730	678	712
\$100K or higher	1,573	1,541	1,495	1,627
Over \$1M	194	185	181	207
Offenders w/bonds	3,577	3,439	3,241	3,527

Table 5a – Pre-trial offenders, weeks since admission

Weeks since last DOC admit	Jan. 1, 2015	Feb. 1, 2015	Mar. 1, 2015	Mar. 1, 2014
< 1 week	356	401	422	428
1 to < 3 weeks	408	347	297	308
3 to < 10 weeks	890	782	709	852
10 to < 30 weeks	1,160	1,153	1,037	1,078
30 wks or more	776	759	781	866
Pre-trial prisoners	3,590	3,442	3,246	3,532

Table 5b – New offender admits, pre-trial

	Dec. 2014	Jan. 2015	Feb. 2015
Pre-trial Admits	1,418	1,299	1,101
New to DOC	377	319	301
% New	27%	25%	27%

Court Support Services Division

Table 6 – The Jail Re-interview Program

	Pre-trial admissions	Offender interviews	Offenders released	Releases last year
Dec.	1,418	1,525	877	907
Jan. '15	1,299	1,341	888	722
Feb.	1,101	1,099	753	642

Table 6a – Pre-Trial & split-sentence starts

	Pre-trial Bail Case Starts	Client Supv. Starts	Split Sentence Starts
Dec.	2,307	2,368	422
Jan. '15	2,166	2,479	402
Feb.	1,978	2,112	367

Note: Figures published here are based on operational data available at publication. Data in subsequent issues may not agree.

Chart 3 – Prison population

January 1, 2015 to January 7, 2015

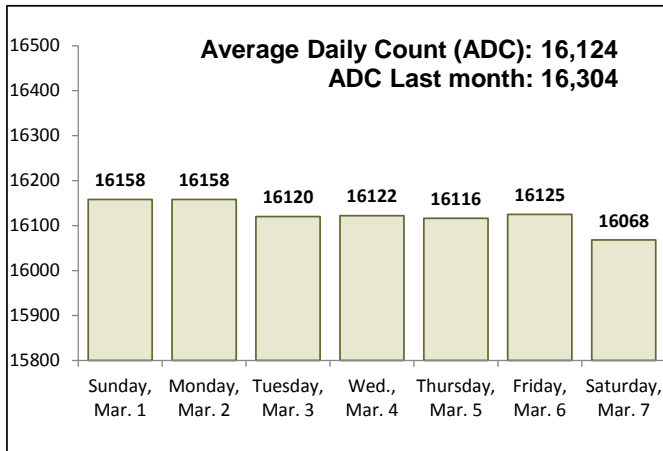


Chart 6 – Monthly DOC Admissions

December 2013 through February 2015

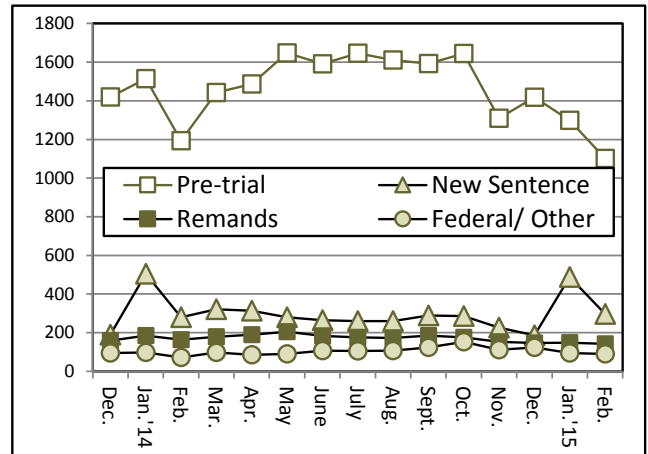


Chart 4 – Prison population, first-of-month

2014 and 2015

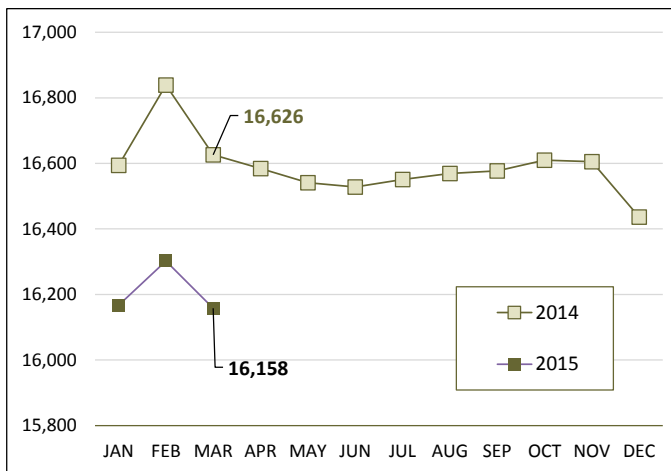


Chart 7– Remands from community release

February 2015

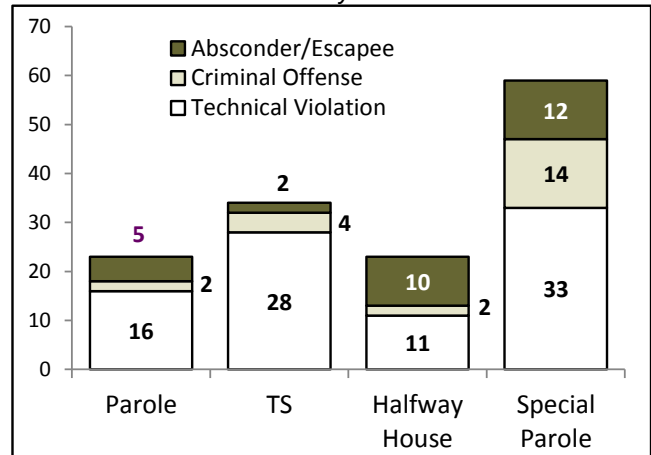


Chart 5 – Statewide criminal arrests

2014 and 2015

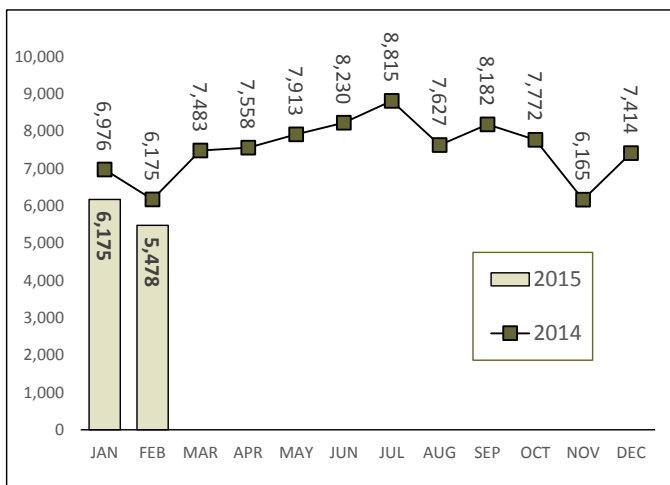
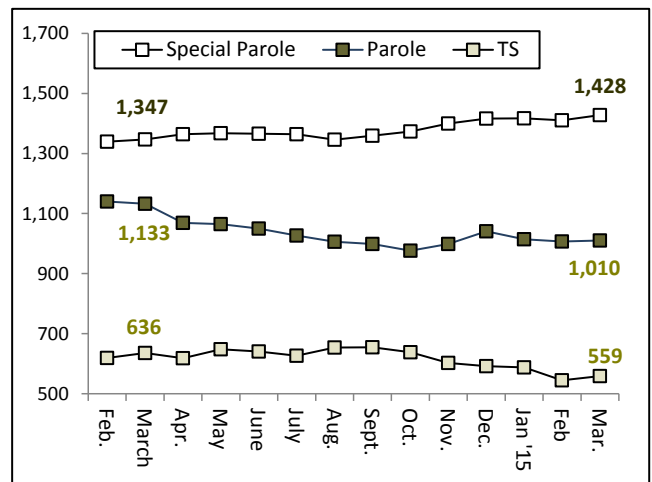


Chart 8 – DOC community supervision

February 1, 2014 through March 1, 2015



Note: Data for all charts, with the exception of Chart 5, was supplied by CT DOC. Data for Chart 5 is based on new case starts in the state Offender-Based Tracking System (OBTS). Chart 8 includes offenders in halfway houses.