

OPM - Criminal Justice Policy & Planning Division

Monthly Indicators Report

Highlights

- On January 1, 2015, 16,167 people were incarcerated in CT jails and prisons, a 16-year low. The total prison population dropped by 2.6% or about 400 prisoners over the course of the year.
- The number of parole hearings held by the Board of Pardons and Paroles continues to edge upward. In December, Board panels heard 193 new parole cases. Paroles were granted in 55% of these cases, a rather low grant rate by historic standards.
- In an effort to better describe the different populations that flow through the state's criminal justice system, MIR will begin reporting on the number of new people entering the prison system. Chart 2a reveals that fewer new people are entering the prison system each year. Table 5b contains data showing that 75% of offenders admitted to prison on pre-trial status have a prior history of incarceration with the CT DOC.
- Criminal arrests across the state in 2014 were down 4.8% compared to 2013. Coincidentally, total admissions to prison were also down 4.6% during the same period. In contrast, pre-trial prison admissions were only down by 3.5% compared with last year.
- During 2014, 1,038 offenders were discharged to special parole at the completion of their prison sentences. During the same period, 645 special parolees were remanded into custody.

*Please send comments or suggestions to:
opmmir@ct.gov*

Prison Population Forecast

After remaining relatively flat over most of the year, the state's prison population took its anticipated seasonal winter dip in November and dropped by about 400 prisoners during the final two months of 2014.

OPM is currently working to produce a new projection of the prison population for the coming year. For almost a decade, when the prison population regularly hovered above 18,000, it was relatively easy to project how the prison population would trend during the course of a year. Those days appear to have ended. On January 1st, 16,167 people were incarcerated in CT; the last year in which the prison population was lower was on January 1, 1997.

At this point, OPM expects that the prison population will decline over the coming 12 months. It would be prudent, however, to recall that in 2013, OPM projected that the prison population would end the year with 600 fewer inmates than it actually did when an unexpected constriction in the state's parole-review system, that began in 2012, resulted in a large and unanticipated surge in the size of the sentenced, prison population during the second half of 2013. The last time the sentenced population had surged so dramatically was in the aftermath of the Cheshire murders.

TABLE 1 – Prison Population Forecast

	Avg. Daily Count	OPM 2014 Forecast	Inmate difference
JAN '14	16,347	-	-
FEB	16,839	16,839	
MAR	16,624	16,759	135
APR	16,582	16,737	155
MAY	16,519	16,683	164
JUN	16,563	16,678	115
JUL	16,486	16,709	223
AUG	16,579	16,763	184
SEP	16,559	16,860	301
OCT	16,610	16,979	369
NOV	16,608	16,946	338
DEC	16,459	16,761	302
JAN '15	16,204	16,445	241
FEB	-	16,758	

Avg. Daily Count (ADC) for 1st week of month

Chart 1 – Actual prison population against the OPM forecasts
January 1, 2013 through February 1, 2015

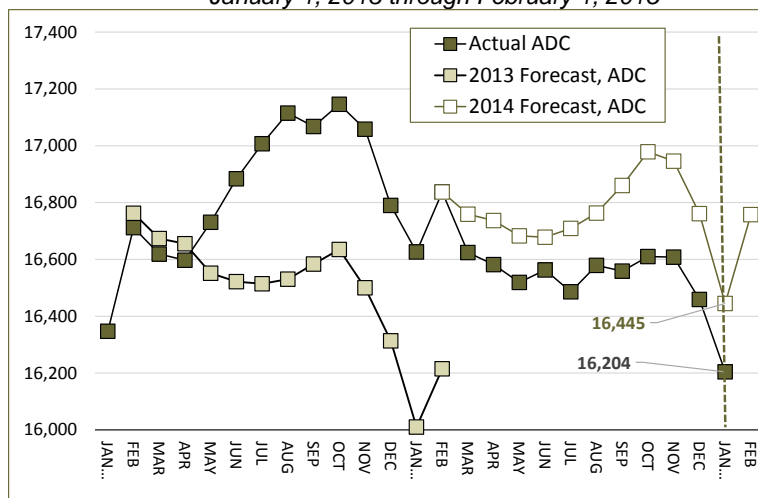
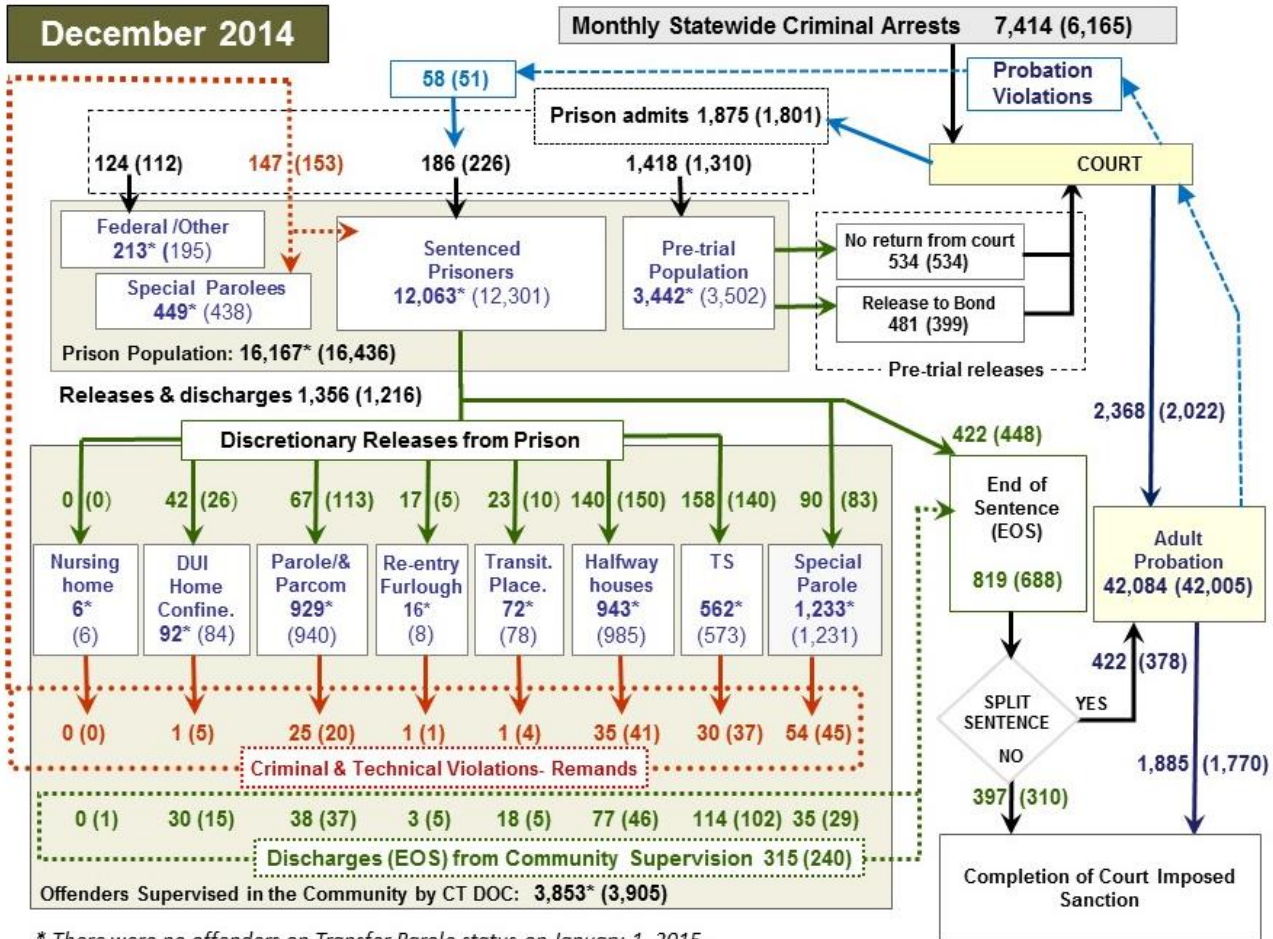


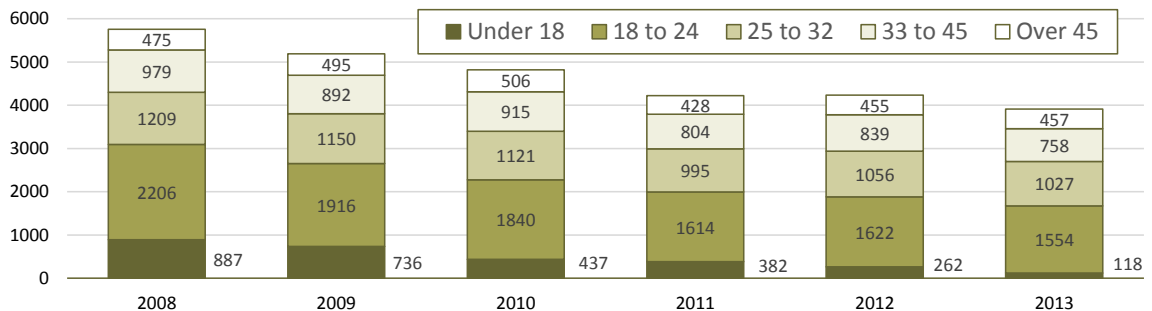
Chart 2 - Criminal justice, monthly counts and flows



* There were no offenders on Transfer Parole status on January 1, 2015.

Chart 2 contains monthly, operations data for December 2014 and daily counts reported on January 1, 2015. Figures followed by asterisks (*) indicate the daily count on January 1st. Last month's figures are enclosed by parentheses. Sources: Arrests - OBTS, Court and probation data - CSSD, all other data - CT DOC.

Chart 2a – First-time pre-trial admits for males, by age, 2008 - 2013



The state's prison population has been dropping for several years. On January 1st, 2008, the state's prisons held 19,438 inmates. This year, 16,167 people were in prison, a 16.8% decline.

During the same period, the size of the pre-trial population has also dropped but by a less dramatic 10.6%. Even though the decrease was smaller, there is reason to be optimistic; the number of new people being admitted to prison as pre-trial detainees appears to be decreasing. In 2008, 5,756 men, who had never been in prison before, were admitted as pre-trial offenders. In 2014, the

number of new men being admitted to prison dropped to 3,786, a 34 % decrease.

Simply put, almost 2,000 fewer new people entered prison in 2014 than in 2008. Complete data on persons admitted to prison on pre-trial status by age and gender is only available through 2013. That data shows that the reduction in new people entering the prison system is disproportionately affecting younger adults. In 2008, 3,093 men under the age of 25, with no prison histories, were admitted on pre-trial status. By 2013, that number had fallen to 1,672, a 46% decrease.

Table 2 – The first-of-the-month totals

	2014	2014	2015	2014	% Change	
	Nov. 1	Dec. 1	Jan. 1	Jan. 1	Monthly	Annual
DOC Facilities						
Federal/Other	227	195	213	164	9.2%	29.9%
Sentenced	12,372	12,301	12,063	12,417	-1.9%	-2.9%
Special Parole	422	438	449	399	2.5%	12.5%
Pre-trial	3,584	3,502	3,442	3,614	-1.7%	-4.8%
Total	16,605	16,436	16,167	16,594	-1.6%	-2.6%
DOC Community						
Transfer Parole	0	0	0	2	-	-
Parole/ Parcom Total	936	940	929	1,077	-1.2%	-13.7%
Parole	774	774	761	914	-1.7%	-16.7%
Parcom @ CT	162	166	168	163	1.2%	3.1%
Furlough	12	8	16	14	-	-
Trans Placement	82	78	72	97	-7.7%	-25.8%
DUI/Home confine.	79	84	92	95	9.5%	-3.2%
Halfway House Total	962	985	943	981	-4.3%	-3.9%
Comm Release	709	680	646	726	-5.0%	-11.0%
TS	24	19	26	27	36.8%	-3.7%
Parole	63	101	87	76	-13.9%	14.5%
Transfer Parole	0	0	0	0	-	-
Special Parole	166	185	184	152	-0.5%	21.1%
TS Total	579	573	562	631	-1.9%	-10.9%
Nursing home	7	6	6	4	-	-
Special Parole	1,234	1,231	1,233	1,192	0.2%	3.4%
Total	3,891	3,905	3,853	4,093	-1.3%	-5.9%

Table 3 – Admissions, releases & discharges*

	2014	2014	2014	2013	% Change	
	Oct.	Nov.	Dec.	Dec.	Monthly	Annual
Admissions						
Federal/Other	153	112	124	94	10.7%	31.9%
Remands	175	153	147	159	-3.9%	-7.5%
Trans.Parole / DUI	5	5	1	0	-	-
Parole	26	20	25	32	25.0%	-21.9%
Trans Plac/Furlough	3	5	2	1	-	-
HWH	42	41	35	29	-14.6%	20.7%
TS	46	37	30	45	-18.9%	-33.3%
Special Parole	53	45	54	45	20.0%	20.0%
New Sentence	286	226	186	189	-17.7%	-1.6%
VOP	95	51	58	61	13.7%	-4.9%
Pre-trial	1,645	1,310	1,418	1,419	8.2%	-0.1%
Total	2,259	1,801	1,875	1,861	4.1%	0.8%
Releases and discharges (sentenced only)						
Transfer Parole	0	0	0	0	-	-
Parole	112	113	67	98	-40.7%	-31.6%
Furlough	17	5	17	11	240.0%	54.5%
Trans. Placement	14	10	23	24	130.0%	-4.2%
Home Confinement DUI	28	26	42	35	61.5%	20.0%
HWH	145	150	140	129	-6.7%	8.5%
TS	163	140	158	191	12.9%	-17.3%
Special Parole	105	83	90	80	8.4%	12.5%
Nursing home	0	0	0	1	-	-
End of Sentence	840	688	819	779	19.0%	5.1%
Total	1,424	1,215	1,356	1,348	11.6%	0.6%
Pre-trial Releases*						
No return from Court	583	534	534	567	0.0%	-5.8%
Release to Bond	502	399	481	412	20.6%	16.7%

* Totals reflect events not individuals.

Board of Pardons and Paroles

Table 4 – Parole hearings, new cases

	Parole Hearings	Paroles granted, 2014	Grant rate	Paroles granted, 2013	Paroles granted, 2012
Oct.	171	110	64%	125	93
Nov.	169	103	61%	124	96
Dec.	193	107	55%	117	110

Table 4a – Other parole actions

	Reparole from revocation	Reparole from rescission	Closed interest cases	Special parole cases
Oct.	45	4	40	58
Nov.	30	9	44	39
Dec.	34	1	44	45

Pre-trial detainees

Table 5 – Bond ranges for pre-trial detainees

Bond amount	Nov. 1, 2014	Dec. 1, 2014	Jan. 1, 2015	Jan. 1, 2014
Less than \$20K	698	649	642	626
\$20K to < \$50K	611	588	588	637
\$50K to < \$100K	782	761	774	784
\$100K or higher	1,519	1,530	1,573	1,680
Over \$1M	204	199	194	208
Offenders w/bonds	3,610	3,528	3,577	3,727

Table 5a – Pre-trial offenders, weeks since admission

Weeks since last DOC admit	Nov. 1, 2014	Dec. 1, 2014	Jan. 1, 2015	Jan. 1, 2014
< 1 week	476	434	356	297
1 to < 3 weeks	403	369	408	421
3 to < 10 weeks	981	925	890	950
10 to < 30 weeks	1,040	1,075	1,160	1,187
30 wks or more	715	730	776	872
Pre-trial prisoners	3,615	3,533	3,590	3,727

Table 5b – New offender admits, pre-trial

	Oct. 2014	Nov. 2014	Dec. 2014
Pre-trial Admits	1,645	1,310	1,418
New offenders	449	345	377
% new	27.3%	26.3%	26.6%

Court Support Services Division

Table 6 – The Jail Re-interview Program

	Pre-trial admissions	Offender interviews	Offenders released	Releases last year
Oct.	1,645	1,756	706	1,081
Nov.	1,310	1,327	804	917
Dec.	1,418	1,525	877	907

Table 6a – Pre-Trial & split-sentence starts

	Pre-trial Bail Case Starts	Client Supv. Starts	Split Sentence Starts
Oct.	2,581	2,426	419
Nov.	2,207	2,022	378
Dec.'15	2,307	2,368	422

Note: Figures published here are based on operational data available at the time of publication. Data in subsequent issues may not agree.

Chart 3 – Prison population

January 1, 2015 to January 7, 2015

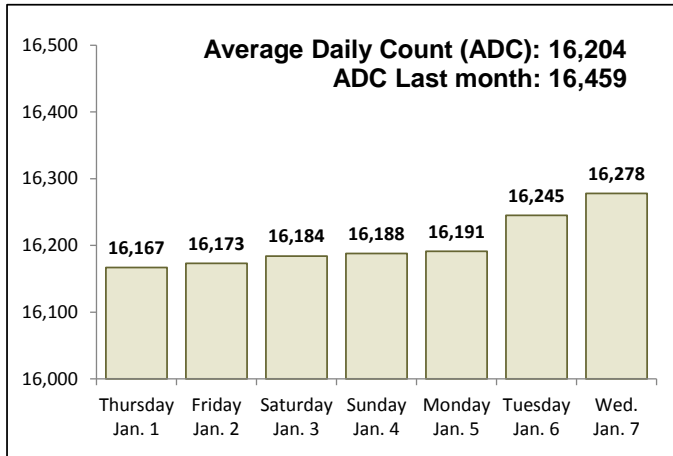


Chart 6 – Monthly DOC Admissions

November 2013 through December 2014

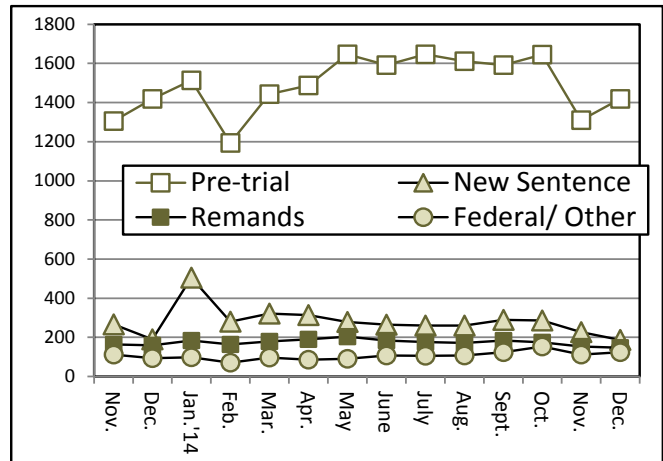


Chart 4 – Prison population, first-of-month

2013, 2014 and 2015

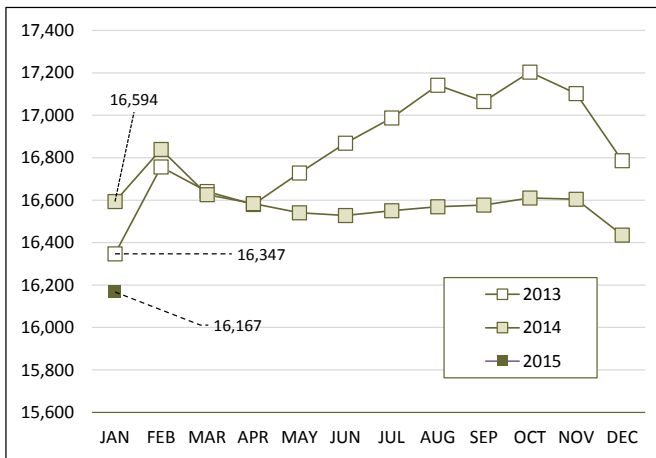


Chart 7– Remands from community release

December 2014

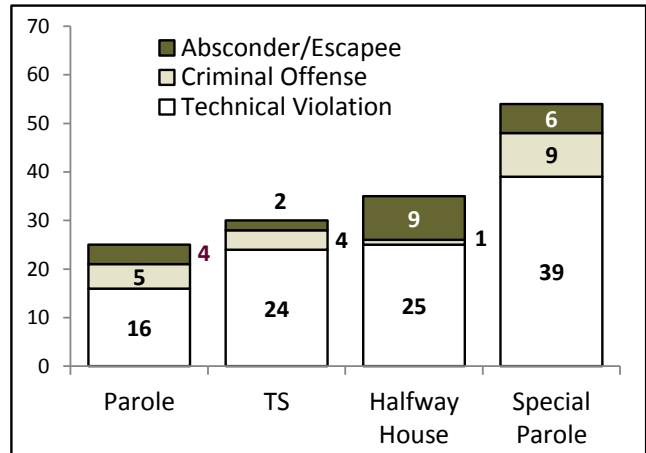


Chart 5 – Statewide criminal arrests

2013 versus 2014

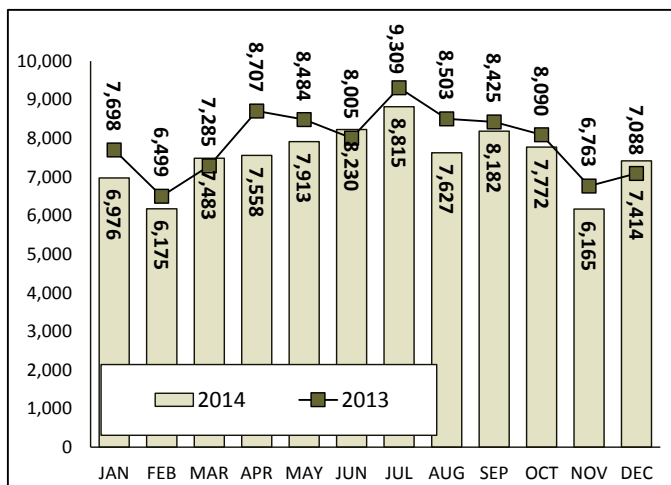
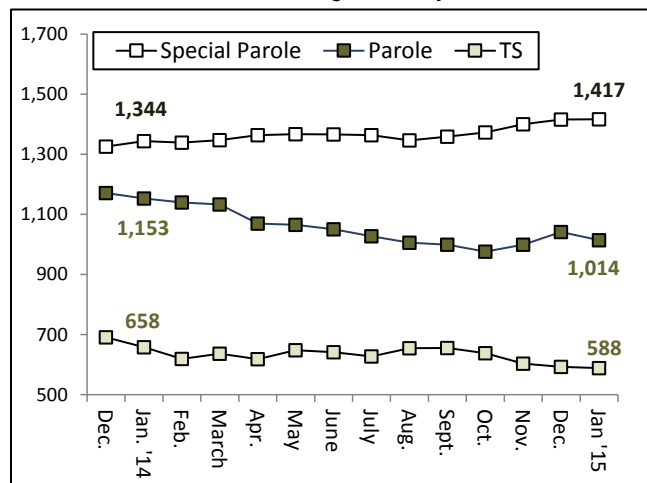


Chart 8 – DOC community supervision

December 1, 2013 through January 1, 2015



Note: Data for all charts, with the exception of Chart 5, was supplied by CT DOC. Data for Chart 5 is based on new case starts in the state Offender-Based Tracking System (OBTS). Chart 8 includes offenders in halfway houses.