

OPM - Criminal Justice Policy & Planning Division

Monthly Indicators Report

Highlights

- On August 1, 2015, 16,156 people were incarcerated in Connecticut prisons, On August 1, 2013, 17,142 people were in prison.
- There were 2,214 prison admissions in July, up slightly from June when there were 1,969 admits. Last July, 2,187 people were admitted to state prisons (see table 3).
- On August 13, 2015, the Connecticut Supreme Court ruled that the state's death penalty was unconstitutional. The ruling will effect 11 men currently on the state's death row. The last man executed in CT was the serial killer Michael Ross in 2005. Before Ross the last person executed was Joseph Taborsky in 1960.
- The Community Release Unit (CRU) reviewed 829 cases in July. As the new unit consolidates, they are developing better metrics to benchmark their performance. During July, the unit closed interest in the cases of 71 offenders without sponsors whose sentences were so short they were not eligible for halfway house placements.
- Over the last 5 years, the number of young offenders in adult prisons has dropped significantly in the state. As of August 13, 2015, there were 80 prisoners under the age of 18 in DOC custody. Over half were on pre-trial status. Most young prisoners came from the state's larger towns. Seventy percent (70%) of these young prisoners were black.

To have the Monthly Indicators Report emailed to you each month. Please email: opm.mir@ct.gov In the subject line write: Send Monthly

Prison Population Forecast

The prison population increased moderately during July. An increase of 154 prisoners is not cause for great concern given that it is summer. During July, 255 more people were admitted to prison than in the month of June. That the prison count increased by only 150 suggests that the system is running relatively efficiently.

OPM continues to believe that the prison population will continue to track in alignment with the February forecast. If it does, the prison population should dip below 16,000 prisoners by year's end.

To date, the average daily prison population for the first week of each month (ADC) has stayed within 0.5 percent of the figure projected by OPM in February 2015.

TABLE 1 – Prison Population Forecast

| | Avg. Daily Count | OPM 2015 Forecast | Inmate difference |
|---------|------------------|-------------------|-------------------|
| JAN '15 | 16,204 | - | - |
| FEB | 16,302 | 16,343 | 41 |
| MAR | 16,124 | 16,136 | 12 |
| APR | 16,161 | 16,079 | (82) |
| MAY | 16,093 | 16,052 | (41) |
| JUN | 16,121 | 16,039 | (82) |
| JUL | 16,006 | 16,061 | 55 |
| AUG | 16,160 | 16,078 | (82) |
| SEP | - | 16,085 | - |
| OCT | - | 16,117 | - |
| NOV | - | 16,112 | - |
| DEC | - | 15,948 | - |
| JAN '16 | - | 15,686 | - |
| FEB | - | 15,917 | - |

Avg. Daily Count (ADC) for 1st week of month

Last year, OPM's 2014 forecast proved to be too conservative. That forecast anticipated an increase in the size of the prison population, over the summer months, that never materialized. A combination of factors like fewer arrests, more consistent bail criteria, more capacity for pre-trial diversion and the Jail Re-interview program may be upsetting typical historical patterns that saw the prisons swell with pre-trial prisoners during the summer months.

Chart 1 – Actual prison population against the OPM forecasts
January 1, 2014 through February 1, 2016

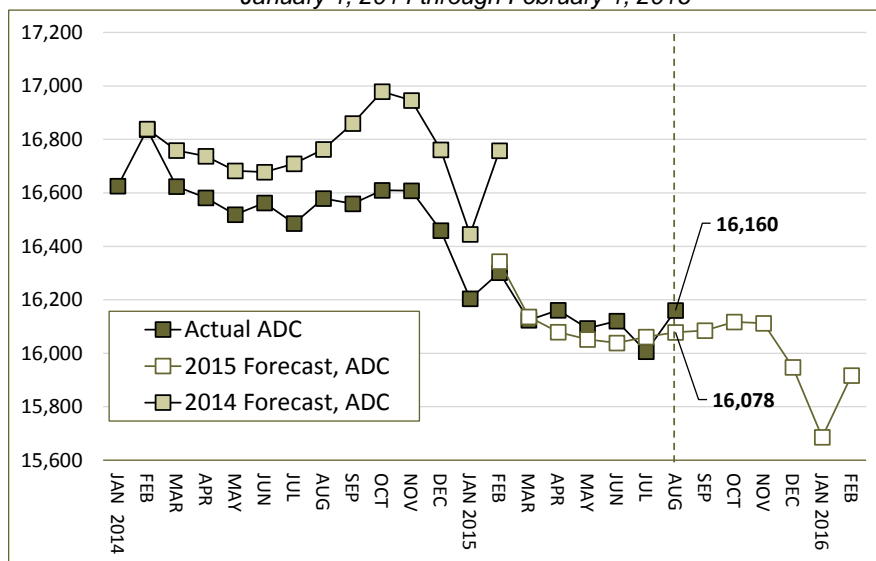
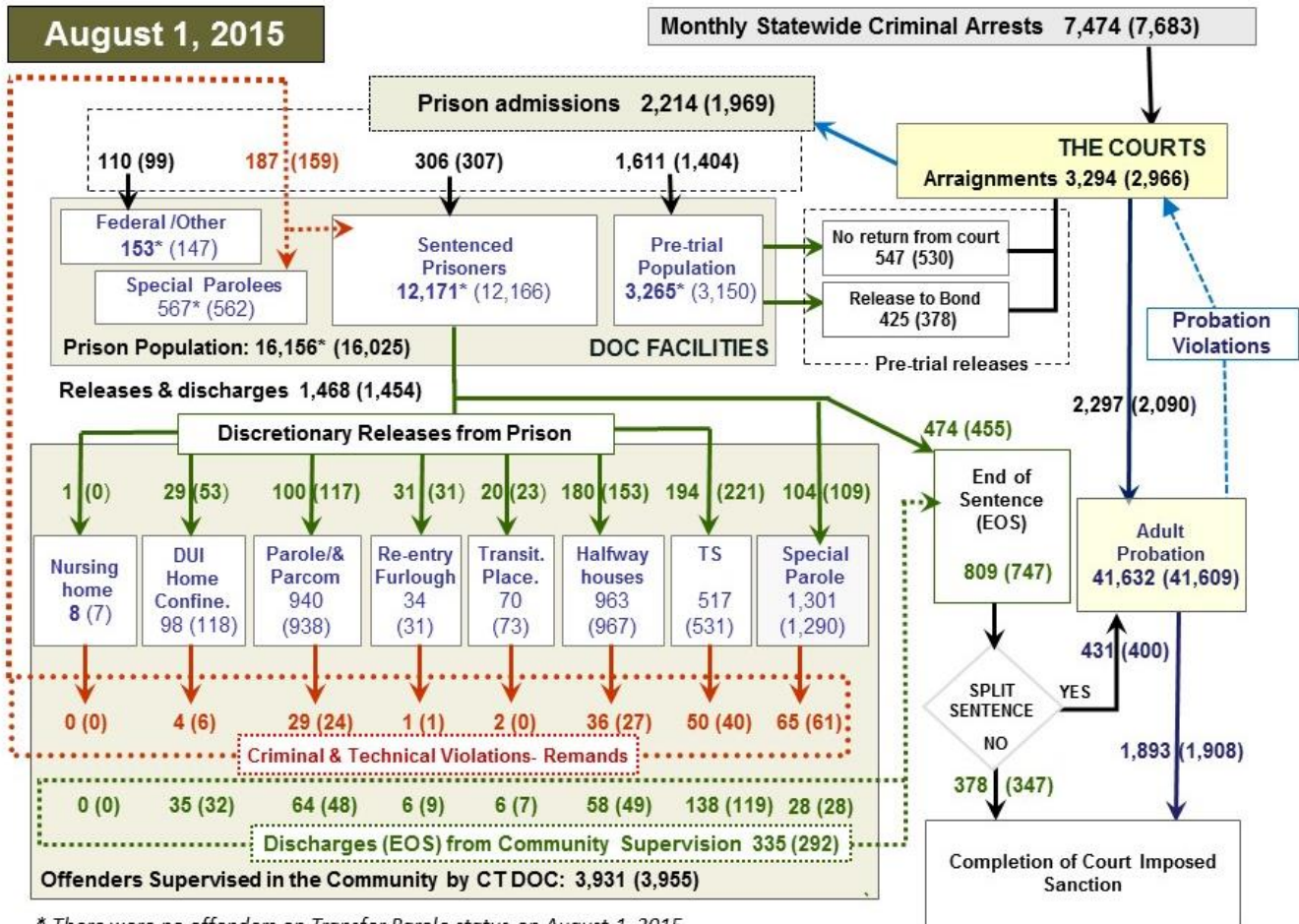


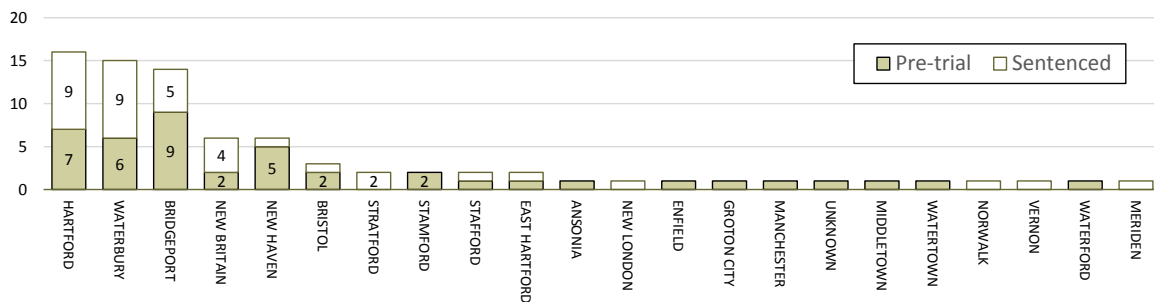
Chart 2 - Criminal justice, monthly counts and flows



* There were no offenders on Transfer Parole status on August 1, 2015.

Chart 2 contains monthly, operations data for the month of July 2015 and daily counts reported on August 1, 2015. Figures followed by asterisks (*) indicate the daily count on August 1st. Last month's figures are enclosed by parentheses. Sources: Arrests - OBTS, Court and probation data - CSSD, all other data - CT DOC.

Chart 2a – Youth under 18 in adult prisons



In this section, in the July issue of this paper, we reported that the number of offenders, under the age of 18, incarcerated in adult prisons in the state fell from 332 to 85 between 2009 and 2015, a 74% decrease.

On August 13, 2015, 80 offenders under the age of 18 were incarcerated in adult prison facilities in Connecticut; 37 were serving sentences, 43 were on pre-trial status. Forty-five (45) out of the 80 incarcerated youth came from just 3 towns, Hartford (16), Waterbury (15), and Bridgeport (14). In

contrast, only 6 incarcerated youths were from New Haven.

Out of 80 young prisoners, only one was female. Seventy percent (70%) of these young prisoners were black. Among sentenced prisoners, the percentage of blacks jumped to 81%.

For the 43 pre-trial offenders bonds ranged from \$7,500 to \$2M. Two-thirds of pre-trial detainees came from either Hartford, Waterbury, Bridgeport, New Britain or New Haven.

Table 2 – The first-of-the-month totals

| | 2015 | 2015 | 2015 | 2014 | % Change | |
|-----------------------|---------------|---------------|---------------|---------------|--------------|--------------|
| | June 1 | July 1 | Aug.1 | Aug.1 | Monthly | Annual |
| DOC Facilities | | | | | | |
| Federal/Other | 146 | 147 | 153 | 205 | 4.1% | -25.4% |
| Sentenced | 12,301 | 12,166 | 12,171 | 12,451 | 0.0% | -2.2% |
| Special Parole | 562 | 562 | 567 | 426 | 0.9% | 33.1% |
| Pre-trial | 3,156 | 3,150 | 3,265 | 3,487 | 3.7% | -6.4% |
| Total | 16,165 | 16,025 | 16,156 | 16,569 | 0.8% | -2.5% |
| DOC Community | | | | | | |
| Transfer Parole | 0 | 0 | 0 | 0 | - | - |
| Parole/ Parcom Total | 906 | 938 | 940 | 951 | 0.2% | -1.2% |
| Parole | 735 | 768 | 768 | 789 | 0.0% | -2.7% |
| Parcom @ CT | 171 | 170 | 172 | 162 | 1.2% | 6.2% |
| Furlough | 26 | 31 | 34 | 2 | - | - |
| Trans Placement | 71 | 73 | 70 | 144 | -4.1% | -51.4% |
| DUI/Home confine. | 106 | 118 | 98 | 85 | -16.9% | 15.3% |
| Halfway House Total | 983 | 967 | 963 | 925 | -0.4% | 4.1% |
| Comm Release | 633 | 618 | 613 | 683 | -0.8% | -10.2% |
| TS | 38 | 50 | 55 | 36 | 10.0% | 52.8% |
| Parole | 106 | 103 | 104 | 55 | 1.0% | 89.1% |
| Transfer Parole | 0 | 0 | 0 | 0 | - | - |
| Special Parole | 206 | 196 | 191 | 151 | -2.6% | 26.5% |
| TS Total | 493 | 531 | 517 | 618 | -2.6% | -16.3% |
| Nursing home | 8 | 7 | 8 | 7 | - | - |
| Special Parole | 1,249 | 1,290 | 1,301 | 1,195 | 0.9% | 8.9% |
| Total | 3,842 | 3,955 | 3,931 | 3,927 | -0.6% | 0.1% |

Table 3 – Admissions, releases & discharges*

| | 2015 | 2015 | 2015 | 2014 | % Change | |
|--------------------------------|--------------|--------------|--------------|--------------|--------------|-------------|
| | May | June | July | July | Monthly | Annual |
| Admissions | | | | | | |
| Federal/Other | 88 | 99 | 110 | 105 | 11.1% | 4.8% |
| Remands | 162 | 159 | 187 | 176 | 17.6% | 6.3% |
| DUI | 5 | 6 | 4 | 1 | - | - |
| Parole | 28 | 24 | 29 | 35 | 20.8% | -17.1% |
| Trans Plac/Furlough | 3 | 1 | 3 | 7 | - | - |
| HWH | 31 | 27 | 36 | 33 | 33.3% | 9.1% |
| TS | 44 | 40 | 50 | 52 | 25.0% | -3.8% |
| Special Parole | 51 | 61 | 65 | 48 | 6.6% | 35.4% |
| New Sentence | 281 | 307 | 306 | 260 | -0.3% | 17.7% |
| VOP | 91 | 92 | 106 | 87 | 15.2% | 21.8% |
| Pre-trial | 1,397 | 1,404 | 1,611 | 1,646 | 14.7% | -2.1% |
| Total | 1,928 | 1,969 | 2,214 | 2,187 | 12.4% | 1.2% |
| Releases and discharges | | | | | | |
| Transfer Parole | 0 | 0 | 0 | 0 | - | - |
| Parole | 86 | 117 | 100 | 82 | -14.5% | 22.0% |
| Furlough | 17 | 31 | 31 | 4 | 0.0% | 675.0% |
| Trans. Placement | 12 | 23 | 20 | 31 | -13.0% | -35.5% |
| Home Confinement DUI | 31 | 53 | 29 | 24 | -45.3% | 20.8% |
| HWH | 134 | 153 | 180 | 168 | 17.6% | 7.1% |
| TS | 131 | 221 | 194 | 223 | -12.2% | -13.0% |
| Special Parole | 90 | 109 | 104 | 74 | -4.6% | 40.5% |
| Nursing home | 2 | 0 | 1 | 0 | - | - |
| End of Sentence | 735 | 747 | 809 | 798 | 8.3% | 1.4% |
| Total | 1,238 | 1,454 | 1,468 | 1,404 | 1.0% | 4.6% |
| Pre-trial Releases* | | | | | | |
| No return from Court | 530 | 530 | 547 | 569 | 3.2% | -3.9% |
| Release to Bond | 352 | 378 | 425 | 495 | 12.4% | -14.1% |

* Totals reflect events, not individual offenders

Table 3a – Comm. Release Unit metrics

| | Reviewed | Approved | Denied | Continued | Approval Rate |
|------|----------|----------|--------|-----------|---------------|
| May | 840 | 438 | 209 | 119 | 52% |
| June | 892 | 439 | 203 | 157 | 49% |
| July | 829 | 381 | 152 | 136 | 46% |

Board of Pardons and Paroles

Table 4 – Parole hearings, new cases

| | Parole Hearings | Paroles granted | Grant rate | Paroles granted, 2014 | Paroles granted, 2013 |
|------|-----------------|-----------------|------------|-----------------------|-----------------------|
| May | 134 | 83 | 62% | 73 | 149 |
| June | 145 | 70 | 48% | 98 | 133 |
| July | 153 | 84 | 55% | 125 | 106 |

Table 4a – Other parole actions

| | Reparole from revocation | Reparole from rescission | Closed interest cases | Special parole cases |
|------|--------------------------|--------------------------|-----------------------|----------------------|
| May | 35 | 2 | 38 | 25 |
| June | 46 | 5 | 20 | 53 |
| July | 46 | 8 | 56 | 41 |

The pre-trial population

Table 5 – Bond ranges for pre-trial detainees

| Bond amount | June 1, 2015 | July 1, 2015 | Aug. 1, 2015 | Aug. 1, 2014 |
|-------------------|--------------|--------------|--------------|--------------|
| Less than \$20K | 566 | 558 | 651 | 687 |
| \$20K to < \$50K | 510 | 517 | 535 | 653 |
| \$50K to < \$100K | 664 | 721 | 724 | 740 |
| \$100K or higher | 1,410 | 1,458 | 1,460 | 1,501 |
| Over \$1M | 185 | 175 | 180 | 193 |
| Offenders w/bonds | 3,150 | 3,254 | 3,370 | 3,581 |

Table 5a – Pre-trial, weeks since admission

| Weeks since last DOC admit | June 1, 2015 | July 1, 2015 | Aug. 1, 2015 | Aug. 1, 2014 |
|----------------------------|--------------|--------------|--------------|--------------|
| < 1 week | 464 | 469 | 511 | 527 |
| 1 to < 3 weeks | 351 | 346 | 417 | 440 |
| 3 to < 10 weeks | 773 | 882 | 877 | 936 |
| 10 to < 30 weeks | 809 | 823 | 826 | 977 |
| 30 wks or more | 754 | 735 | 742 | 701 |
| Pre-trial prisoners | 3,151 | 3,255 | 3,373 | 3,581 |

Table 5b – Pre-trial admits, new offenders

| | Mar 2015 | Apr. 2015 | May 2015 | June 2015 | July 2015 |
|------------------|----------|-----------|----------|-----------|-----------|
| Arraignments | 3,101 | 2,798 | 2,903 | 2,966 | 3,294 |
| Pre-trial Admits | 1,498 | 1,350 | 1,397 | 1,404 | 1,611 |
| New to DOC | 368 | 338 | 357 | 353 | 415 |
| % New | 25% | 25% | 26% | 25% | 26% |

Court Support Services Division

Table 6 – The Jail Re-interview Program

| | Pre-trial admissions | Offender interviews | Offenders released | Releases last year |
|------|----------------------|---------------------|--------------------|--------------------|
| May | 1,397 | 1,729 | 832 | 827 |
| June | 1,404 | 1,751 | 778 | 841 |
| July | 1,611 | 1,893 | 873 | 837 |

Table 6a – Pre-Trial & split-sentence starts

| | Pre-trial Case Starts | Bail Starts | Client Supv. Starts | Split Sentence Starts |
|------|-----------------------|-------------|---------------------|-----------------------|
| May | 2,267 | 2,291 | 397 | |
| June | 2,419 | 2,090 | 400 | |
| July | 2,518 | 2,297 | 431 | |

Note: Figures published here are based on operational data available at publication. Data in subsequent issues may not agree.

Chart 3 – Prison population

First week of the month, and ADC

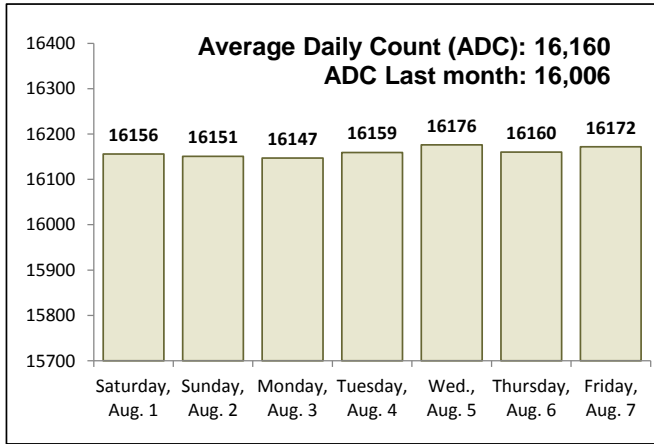


Chart 6 – Monthly DOC Admissions

May 2014 through July 2015

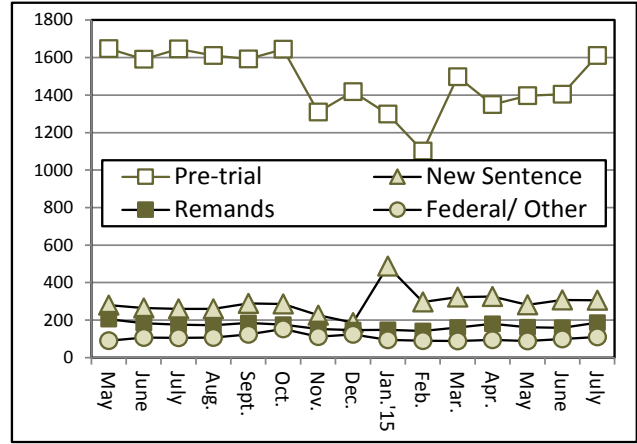


Chart 4 – Prison population, first-of-month

2013, 2014 and 2015

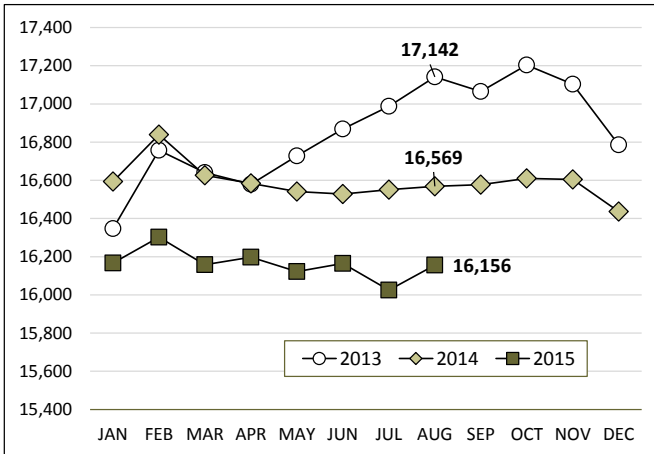


Chart 7– Remands from community release

July 2015

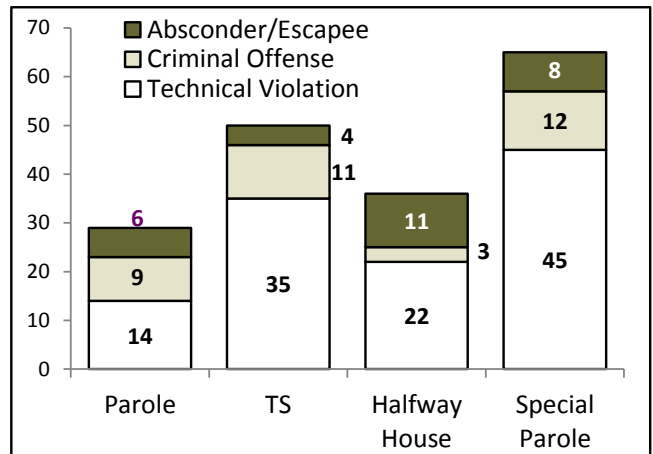


Chart 5 – Statewide criminal arrests

2014 and 2015

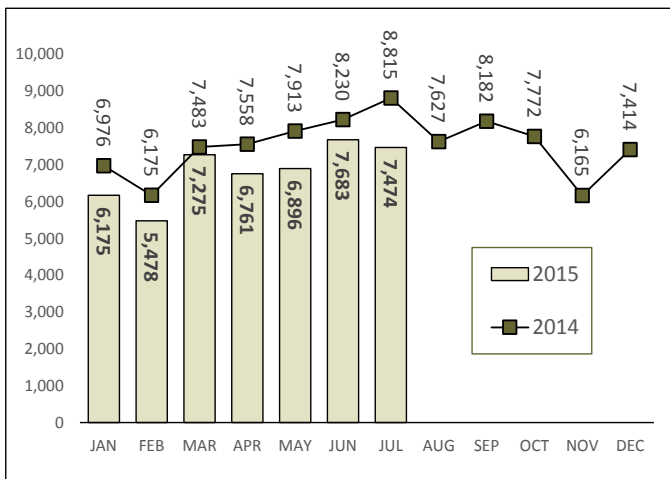
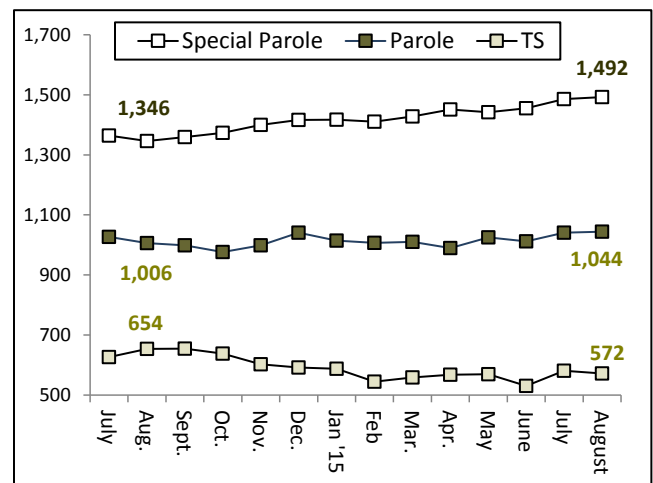


Chart 8 – DOC community supervision

July 1, 2014 through August 1, 2015



Note: Data for all charts, with the exception of Chart 5, was supplied by CT DOC. Data for Chart 5 is based on new case starts in the state Offender-Based Tracking System (OBTS). Chart 8 includes offenders in halfway houses.