

OPM - Criminal Justice Policy & Planning Division

Monthly Indicators Report

Highlights

- The prison system held 148 more prisoners on May 1st than it did on April 1st, a 0.9% jump. An increase of this size, coming at this time of the year, should be cause for some attention. Over the last 10 years, the prison population during April declined 8 times. Last month's increase was the largest since before 2000. Given that the pre-trial population remained flat and the number of admissions of sentenced offenders was unchanged, it is likely these increases are due to problems with the state's parole review and release processes.
- In May, the state began admitting chronic and terminally ill patients to a nursing home facility in Rocky Hill. The facility, which is expected to house up to 95 people, had faced considerable opposition from some town residents and local elected officials.
- Statewide criminal arrests in April spiked by 20% compared to March. They exceeded the arrest total for April 2012 by 4%. Pre-trial admissions to DOC facilities were 7.4% higher in April than they were in March (see Table 2).
- Recent legislative changes to the Risk Reduction Earned Credit initiative (RREC) may contribute to a larger prison population as fewer parole eligible offenders are able to make it out to parole before they discharge. It is likely that we will see more high-risk offenders discharge from the prison with no community supervision.

Contact this paper at:
opm.mir@ct.gov

Prison Population Forecast

The prison population veered off from OPM's projection over last month. The reason is not yet entirely clear. Even though the number of monthly admissions increased by 249 from March to April, 90% of the admissions were for pre-trial offenders, and the pre-trial population remained relatively flat (see Chart 2).

Last month's increase in the prison population was driven, almost entirely, by an unusual spike in the sentenced population. Since sentenced admits did not increase, it is reasonable to expect that some unanticipated or unforeseen process change has constricted and slowed the movement of offenders out to community supervision programs, particularly parole.

Although it is too early to assign a cause to the latest uptick in the sentenced population, one thing appears certain; the prison population is expanding in advance of summer, when we typically expect growth due to an influx of pre-trial detainees. Unless a correction is implemented quickly, it would be reasonable to expect the prison population to approach almost 17,000 by early fall.

TABLE 1 –Prison Population Forecast

	Avg. Daily Count, Actual	OPM 2012 Forecast	Diff. %
JAN 2013	16,347	16,347	-
FEB	16,712	16,763	0.3%
MAR	16,619	16,673	0.3%
APR	16,597	16,655	0.4%
MAY	16,731	16,551	-1.1%
JUN		16,522	-
JUL		16,515	-
AUG		16,530	-
SEP		16,584	-
OCT		16,635	-
NOV		16,500	-
DEC		16,314	-
JAN 2014		16,010	-
FEB		16,215	-
Average Daily Count for first week of month			

Chart 1 – Actual ADC of the prison population against the OPM forecast
 January 1, 2012 through February 1, 2014

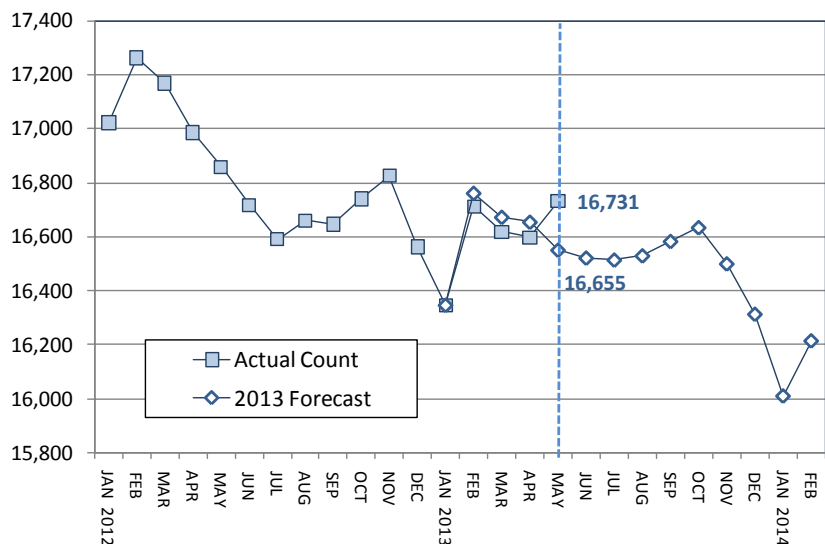
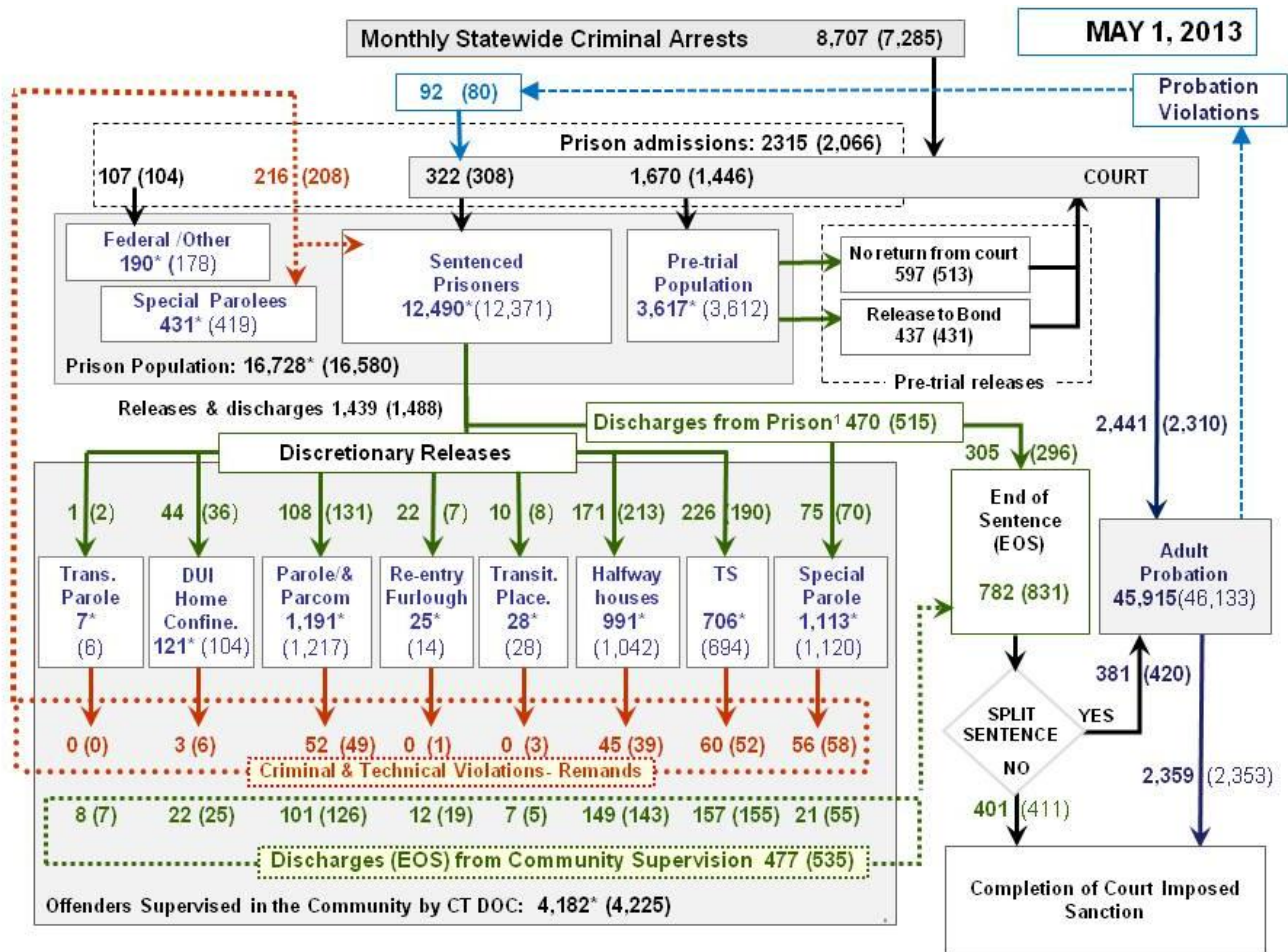
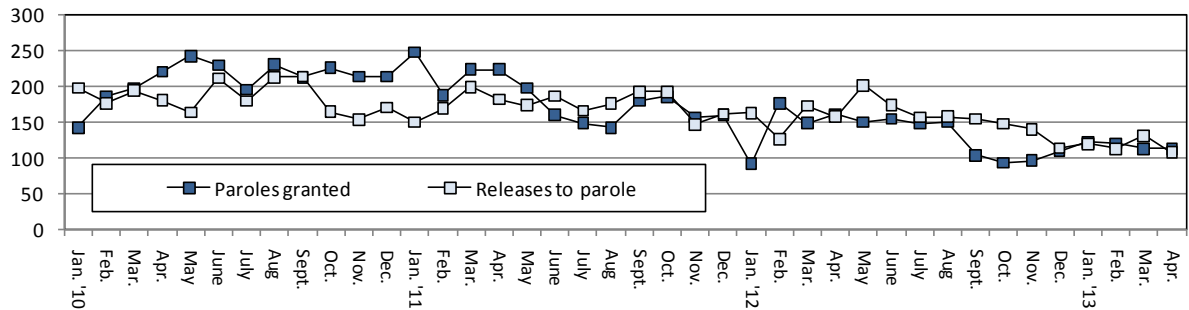


Chart 2 Criminal justice , monthly flows



This chart contains monthly operational data for April 2013 and daily counts reported on May 1, 2013. Asterisks (*) indicate the daily count on May 1st. Numbers enclosed by parenthesis are for the previous month. ¹DOC facility reports indicate that 470 sentenced offenders discharged (EOS) from DOC facilities during the month. Data source: Arrest data - OBTS, Court and probation data - CSSD, all other data - CT DOC

Chart 2a. Parole releases, January 2010 through April 2013



Year	Paroles granted	Avg. grants per month	Releases to parole	Avg. releases per month
2010	2515	209.6	2223	185.3
2011	2217	184.8	2099	174.9
2012	1618	134.8	1826	152.2
2013*	469	117.3	472	118.0

* January through April

Table 2 – DOC Population Counts, First of the Month

	2013	2013	2013	2012	% Change	
	Mar. 1	Apr. 1	May 1	May 1	Monthly	Annual
DOC Facilities						
Federal/Other	181	178	190	158	6.7%	20.3%
Sentenced	12,441	12,371	12,490	12,749	1.0%	-2.0%
Special Parole	390	419	431	327	2.9%	31.8%
Pre-trial	3,629	3,612	3,617	3,624	0.1%	-0.2%
Total	16,641	16,580	16,728	16,858	0.9%	-0.8%
DOC Community						
Transfer Parole	5	6	7	7	16.7%	0.0%
Parole/ Parcom Total	1,263	1,217	1,191	1,287	-2.1%	-7.5%
Parole	1,092	1,052	1,026	1,114	-2.5%	-7.9%
Parcom @ CT	171	165	165	173	0.0%	-4.6%
Furlough	19	14	25	24	78.6%	4.2%
Trans Placement	31	28	28	11	0.0%	154.5%
DUI/Home confine.	101	104	121	81	16.3%	49.4%
Halfway House Total	990	1,042	991	1,082	-4.9%	-8.4%
Comm Release	776	818	770	875	-5.9%	-12.0%
TS	9	13	12	16	-7.7%	-25.0%
Parole	73	85	76	79	-10.6%	-3.8%
Transfer Parole	0	0	0	0	-	-
Special Parole	131	126	133	112	5.6%	18.8%
TS Total	719	694	706	724	1.7%	-2.5%
Special Parole	1,120	1,120	1,113	1,129	-0.6%	-1.4%
Total	4,248	4,225	4,182	4,345	-1.0%	-3.8%

Table 3 – DOC Admissions and Releases, Monthly Totals*

	2013	2013	2013	2012	% Change	
	Feb.	Mar.	Apr.	Apr.	Monthly	Annual
Admissions						
Federal/Other	84	104	107	93	2.9%	15.1%
Returns	189	208	216	168	3.8%	28.6%
Trans.Parole / DUI	3	6	3	0	-	-
Parole	46	49	52	43	6.1%	20.9%
Trans Plac/Furlough	1	4	0	1	-	-
HWH	38	39	45	41	15.4%	9.8%
TS	45	52	60	45	15.4%	33.3%
Special Parole	56	58	56	38	-3.4%	47.4%
New Sentence	292	308	322	323	4.5%	-0.3%
VOP	69	80	92	91	15.0%	1.1%
Pre-trial	1,239	1,446	1,670	1,555	15.5%	7.4%
Total	1,804	2,066	2,315	2,139	12.1%	8.2%
Releases						
Transfer Parole	0	2	1	2	-	-
Parole	113	131	108	158	-17.6%	-31.6%
Furlough	16	7	22	23	214.3%	-4.3%
Transfer Placement	20	8	10	9	25.0%	11.1%
Home Confinement DUI	22	36	44	55	22.2%	-20.0%
HWH	171	213	171	183	-19.7%	-6.6%
TS	198	190	226	231	18.9%	-2.2%
Special Parole	72	70	75	70	7.1%	7.1%
End of Sentence	755	831	782	853	-5.9%	-8.3%
Total	1,367	1,488	1,439	1,584	-3.3%	-9.2%
Pre-trial Releases*						
Did not return from Court	519	513	597	575	16.4%	3.8%
Release to Bond	375	431	437	401	1.4%	9.0%

* Totals reflect events not individuals.

Board of Pardons and Parole

Table 4a – Inmates with sentences greater than 24 months

	Parole eligible	Not eligible
Mar.	8,344	847
Apr.	8,311	848
May	8,383	853

Table 4b – Parole hearings

	Hearings	Granted	Rate
Feb.	165	121	73%
Mar.	160	113	71%
Apr.	171	113	66%

Pre-trial detainees

Table 5 – Bond ranges, pre-trial prisoners

Bond amount	Mar. 1, 2013	Apr. 1, 2013	May 1, 2013
Less than \$20K	17.1%	17.0%	16.5%
\$20K to < \$50K	15.5%	15.8%	16.5%
\$50K to < \$100K	21.1%	21.7%	20.5%
\$100K or higher	46.3%	45.5%	46.4%
Over \$1M	6.4%	6.3%	6.3%

Table 5a – Pre-trial inmates, length-of-stay

Weeks since last DOC admit	Mar. 1, 2013	Apr. 1, 2013	May 1, 2013
< 1 week	13.3%	13.8%	14.0%
1 to < 3 weeks	8.8%	10.6%	11.6%
3 to < 10 weeks	25.9%	24.2%	24.7%
10 to < 30 weeks	30.3%	28.8%	27.8%
30 wks or more	21.7%	22.6%	22.0%
	100%	100%	100%

Court Support Services Division

Table 6 – The Jail Re-interview Program

	Offenders interviewed	Offenders released	Releases last year
Feb.	1,370	852	689
Mar.	1,535	889	702
Apr.	1,655	970	660

Table 7 –Pre-Trial & split-sentence starts

	Pre-trial Bail Case Starts	Client Supv. Starts	Split Sentence Starts
Feb.	1,929	2,145	395
Mar.	2,237	2,310	420
Apr.	2,612	2,441	381

DUI – home confinement

Table 8 – Releases and discharges

	Monthly releases to	On home confinement, 1st of month	Monthly discharges from
Mar.	36	101	25
Apr.	44	104	22
May	-	121	-

Note: Figures published here are based on operational data available at the time of publication. Data in subsequent issues may not agree.

Chart 3 – Prison Population
May 1, 2013 to May 7, 2013

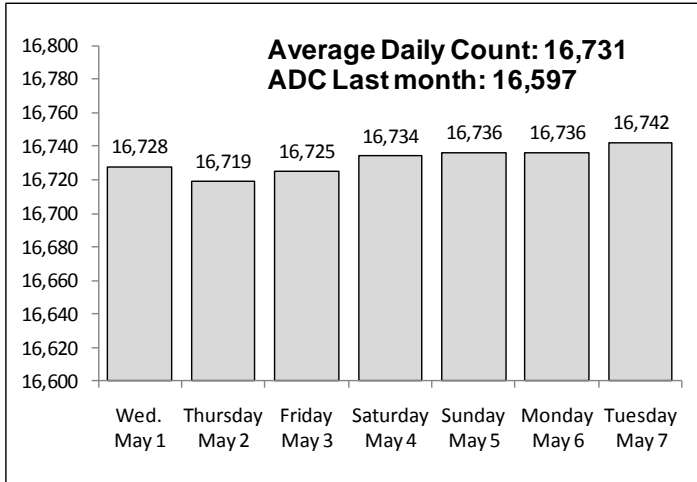


Chart 6 – Monthly DOC Admissions by Type
March 2012 through April 2013

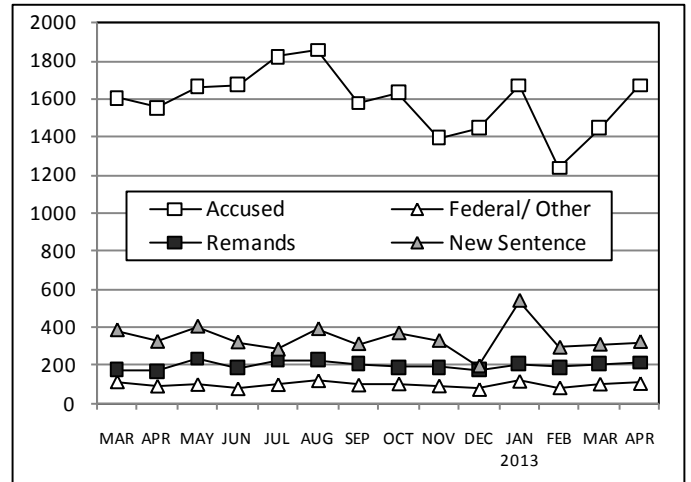


Chart 4 – Prison Population, first-of-month
2011 through 2013

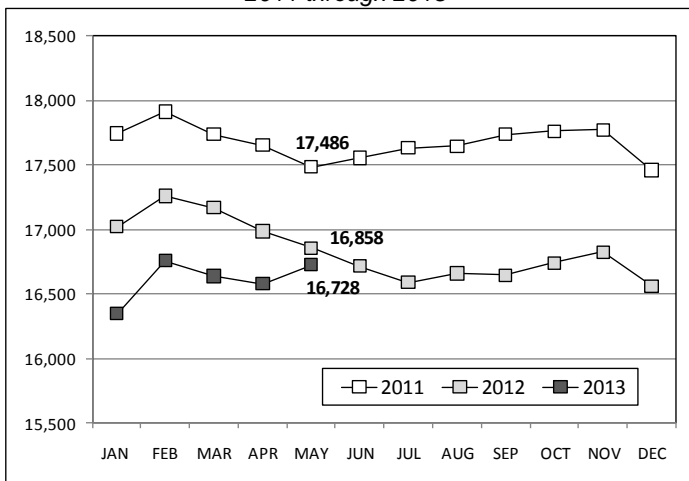


Chart 7 – Remands from Community Release
April 2013

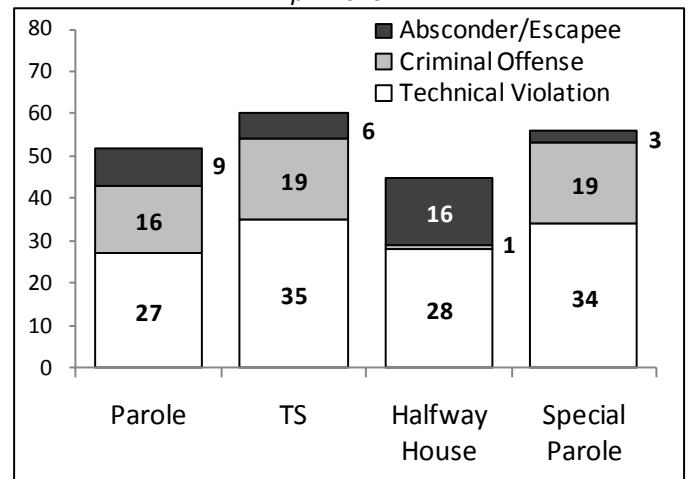


Chart 5 – Monthly Statewide Criminal Arrests
2012 versus 2013

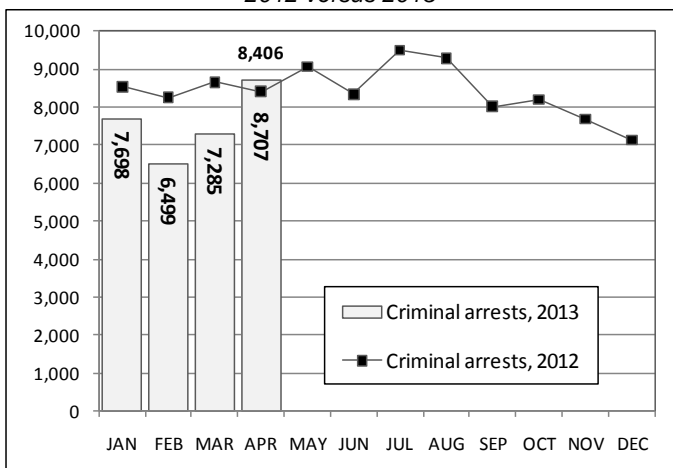
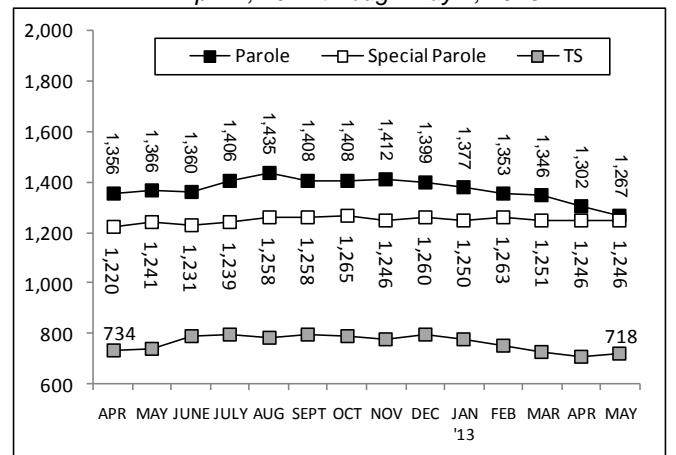


Chart 8 – Parole, TS and Special Parole, supervised cases
April 1, 2012 through May 1, 2013



Note: Data for all charts, with the exception of Chart 5, was supplied by CT DOC. Data for Chart 5 is based on new case starts in the state Offender-Based Tracking System (OBTS).