

OPM - Criminal Justice Policy & Planning Division

Monthly Indicators Report

Highlights

- 16,347 offenders were incarcerated in state prisons on January 1, 2013. This is the lowest first-of-the-month total since September 1998.
- On January 1, 12,104 sentenced offenders were incarcerated in the state. This was the lowest first-of-the-month count of sentenced offenders since February 1997.
- During the month of December, operations slow considerably in the criminal justice system. This is particularly true at the courts, where there appears to be a steep in case continuances. As a consequence, the prison population typically plummets by several hundred prisoners during December.
- This past December the DOC reported 194 sentenced admissions to prison. In November, there were 328 such admissions. In the first eleven months of 2012, 375 sentenced prisoners were admitted, on average, each month.
- After the Cheshire murders in 2008, the Board of Pardons and Paroles was required by legislation to give each parole-eligible prisoner a full-panel hearing before parole could be granted. Prior to that, almost half the paroles were granted in and administrative review procedure. Over the last 4 years, the number of parole hearings has dropped by 25%. In 2009, three-member BOPP panels reviewed 5,496 cases. In 2012, they reviewed only 4,105.

Please direct comments or questions to: opm.mir@ct.gov

Prison Population Forecast

OPM's 2012 prison population forecast consistently over-estimated the number of prisoners who were incarcerated in the state this past year.

For most of the year, movement in the size of the prison population defied historic patterns. Rather than gain population during the summer months, the state's prisons lost inmates well into July. In a typical year, the prison population begins to ebb in September, this year it continued to rise through to the end of October.

TABLE 1 --Prison Population Forecast

	Actual (*Avg Daily Count)	OPM 2011 Forecast	Diff. %
FEB '12	17,224*	17,224	
MAR	17,117*	17,171	-0.3%
APR	16,973*	17,172	-1.2%
MAY	16,829*	17,100	-1.6%
JUN	16,698*	17,143	-2.6%
JUL	16,586*	17,213	-3.6%
AUG	16,603*	17,238	-3.7%
SEP	16,677*	17,263	-3.4%
OCT	16,745*	17,238	-2.9%
NOV	16,777*	17,121	-2.0%
DEC	16,566*	17,013	-2.6%
JAN '13	16,439*	16,587	-0.9%
FEB	-	16,756	

* Average Daily Count, first week of month

Given the limited operational data that is available, and timing in the shifts in the prison population, it is difficult- at this point- to describe why the population moved as it did with complete certainty. We are currently analyzing operational data to identify the factors that affected the population as it did over the past year.

RREC and DUI home confinement programs certainly contributed to the rapid decline in the prison population early in 2012. RREC, however, had its maximum impact during the closing months of 2011 due to retroactive awards of credits. Total prison admissions and releases remained relatively constant in 2012 compared to figures for 2011; arrests were down, statewide, by 12% in 2012 compared to 2011.

CHART 1 – Actual ADC of the prison population against the OPM forecast
January 1, 2011 through February 1, 2013

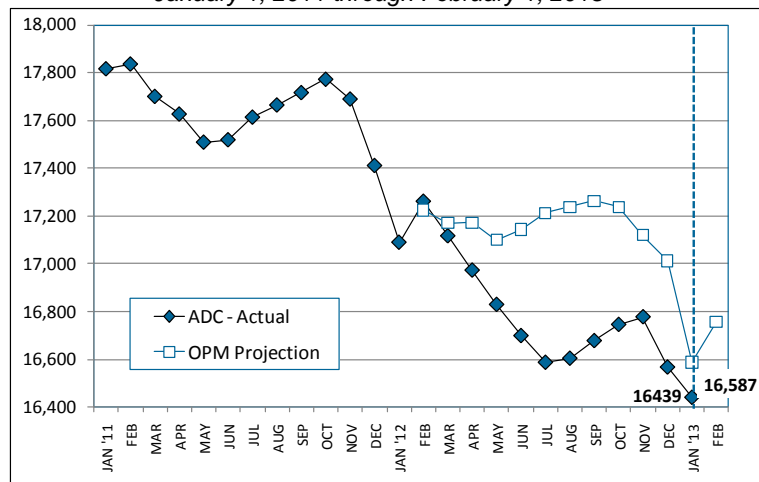
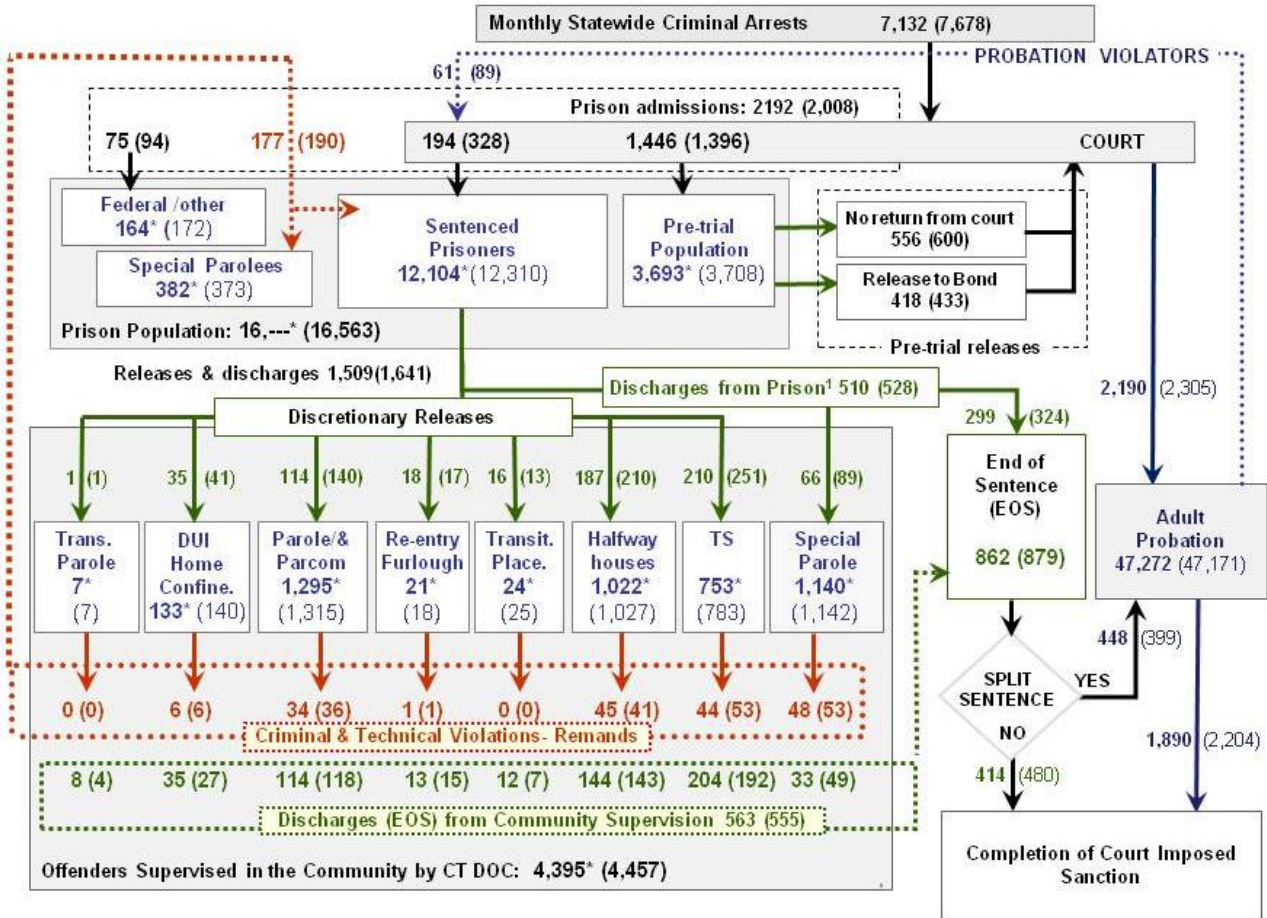


CHART 2 – Connecticut Criminal Justice System – Monthly Overview



This chart contains monthly operational data for December 2012 and daily counts reported on January 1, 2013. Asterisks (*) indicate counts the daily count on January 1st. Numbers enclosed by parenthesis are for the previous month. ¹DOC facility reports indicate that 510 offenders discharged (EOS) from DOC facilities during the month. Sources include: Arrest data - OBTS, Court and probation data - CSSD, all other data CT DOC

CHART 2a – Some demographic data on the state's inmate population

Change in inmate population by age group

	Jan.1, 2011	Jan.1, 2012	Jan.1, 2013	Change 2011 to 2013, %
Under 16	13	17	12	-8%
16 and 17	186	126	94	-49%
18 to 21	1,765	1,611	1,425	-19%
22 to 29	5,180	4,860	4,713	-9%
30 to 39	4,972	4,846	4,742	-5%
40 and older	5,630	5,562	5,361	-5%
Total	17,746	17,022	16,347	-8%

Change in inmate population by race/ethnicity

	Jan.1, 2011	Jan.1, 2012	Jan.1, 2013	Change 2011 to 2013, %
White	5,431	5,416	5,176	-5%
Black	7,474	7,078	6,738	-10%
Hispanic	4,729	4,419	4,326	-9%
Other	112	109	107	-4%
Total	17,746	17,022	16,347	-8%

CHART 2b – Board of Pardons and Paroles, full-panel parole hearings, 2009 through 2012

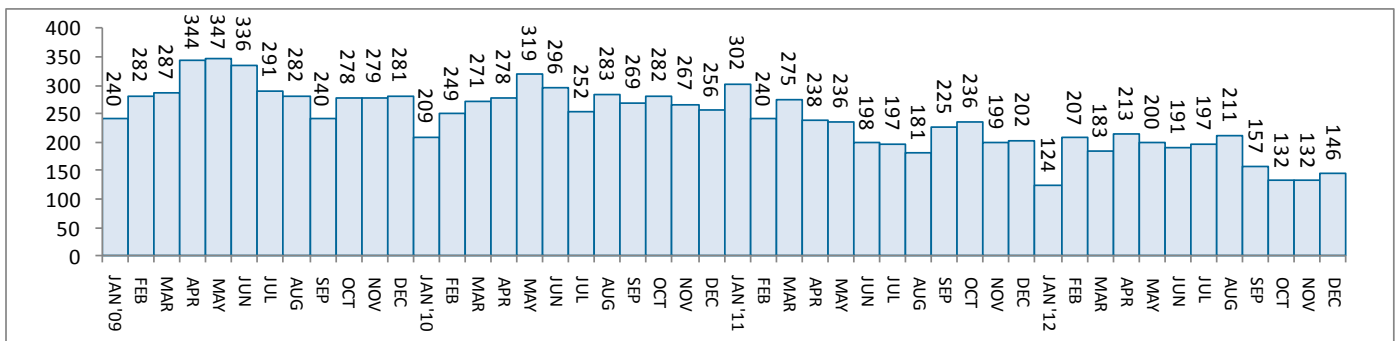


TABLE 2 – DOC Population Counts, First of the Month

	2012	2012	2013	2012	% Change	
	Nov. 1	Dec. 1	Jan. 1	Jan. 1	Monthly	Annual
DOC Facilities						
Federal/Other	163	172	164	145	-4.7%	13.1%
Sentenced	12,398	12,310	12,104	12,955	-1.7%	-6.6%
Special Parole	377	373	382	299	2.4%	27.8%
Pre-trial	3,888	3,708	3,697	3,623	-0.3%	2.0%
Total	16,826	16,563	16,347	17,022	-1.3%	-4.0%
DOC Community						
Transfer Parole	6	7	7	12	0.0%	-41.7%
Parole/ Parcom Total	1,326	1,315	1,295	1,289	-1.5%	0.5%
Parole	1,155	1,150	1,126	1,116	-2.1%	0.9%
Parcom @ CT	171	165	169	173	2.4%	-2.3%
Furlough	20	18	21	12	16.7%	75.0%
Trans Placement	16	25	24	6	-4.0%	300.0%
Home confinement/DUI	133	140	133	0	-5.0%	-
Halfway House Total	1,035	1,027	1,022	1,091	-0.5%	-6.3%
Comm Release	825	815	819	885	0.5%	-7.5%
TS	14	10	11	16	10.0%	-31.3%
Parole	86	84	82	102	-2.4%	-19.6%
Transfer Parole	0	0	0	0	-	-
Special Parole	108	118	110	118	-6.8%	-6.8%
TS Total	765	783	753	716	-3.8%	5.2%
Special Parole	1,138	1,142	1,140	1,069	-0.2%	6.6%
Total	4,439	4,457	4,395	4,195	-1.4%	4.8%

TABLE 3 – DOC Admissions and Releases, Monthly Totals*

	2012	2012	2012	2011	% Change	
	Oct.	Nov.	Dec.	Dec.	Monthly	Annual
Admissions						
Federal/Other	105	94	75	100	-20.2%	-25.0%
Returns	192	190	177	179	-6.8%	-1.1%
Trans.Parole / DUI	9	6	6	0	-	-
Parole	45	36	34	38	-5.6%	-10.5%
Trans Plac/Furlough	1	1	1	1	-	-
HWH	34	41	45	46	9.8%	-2.2%
TS	51	53	43	50	-18.9%	-14.0%
Special Parole	52	53	48	44	-9.4%	9.1%
New Sentence	368	328	194	223	-40.9%	-13.0%
VOP	116	89	61	59	-31.5%	3.4%
Pre-trial	1,635	1,396	1,446	1,516	3.6%	-4.6%
Total	2,300	2,008	1,892	2,018	-5.8%	-6.2%
Releases						
Transfer Parole	0	1	1	11	-	-
Parole	148	140	114	162	-18.6%	-29.6%
Furlough	21	17	18	6	5.9%	200.0%
Transfer Placement	10	13	16	2	23.1%	-
Home Confinement DUI	46	41	35	0	-14.6%	-
HWH	182	210	187	184	-11.0%	1.6%
TS	231	251	210	222	-16.3%	-5.4%
Special Parole	78	89	66	103	-25.8%	-35.9%
End of Sentence	808	879	862	1,096	-1.9%	-21.4%
Total	1,524	1,641	1,509	1,786	-8.0%	-15.5%
Pre-trial Releases*						
Did not return from Court	571	600	556	607	-7.3%	-8.4%
Release to Bond	438	433	418	481	-3.5%	-13.1%

* Totals reflect events not individuals.

Board of Pardons and Parole

TABLE 4 – Inmates with sentences greater than 24 months

	Parole eligible	Not eligible
Nov.	8,284	841
Dec.	8,272	842
Jan. '13	8,284	844

TABLE 4 – Parole hearings

	Hearings	Granted	Rate
Oct.	132	93	70%
Nov.	132	93	70%
Dec.	146	110	75%

DOC – Pre-trial offenders

TABLE 5 – Bond ranges, pre-trial prisoners

	Dec 2012	Jan 2013
Less than \$20K	17.0%	17.2%
\$20K to <\$50K	16.9%	16.2%
\$50K to <\$100K	22.8%	22.3%
\$100K or higher	43.2%	44.3%
Over \$1M	5.9%	6.2%

TABLE 5a – Pre-trial inmates, length-of-stay

Weeks since last DOC admit	Offenders, Dec 1, 2012	Offenders, Jan. 1, 2013
< 1 week	6.6%	9.7%
1 to < 3 weeks	9.5%	11.8%
3 to < 10 weeks	27.8%	24.6%
10 to < 30 weeks	34.1%	33.1%
30 weeks or longer	21.9%	20.8%
	100%	100%

Jail Re-interview Program

TABLE 6 – Monthly interviews and releases

	Offenders interviewed	Offenders released	Releases last year
Oct.	1,135	659	751
Nov.	1,533	807	701
Dec.	1,609	878	731

CSSD – Adult Probation

TABLE 7 –Pre-Trial & split-sentence starts

	Pre-trial Bail Case Starts	Client Supv. Starts	Split Sentence Starts
Oct.	2,321	2,450	373
Nov.	2,271	2,305	399
Dec.	2,086	2,190	448

DUI home confinement

TABLE 8 – Releases and discharges

	Monthly releases to	On home confinement, 1st of month	Monthly discharges from
Nov.	41	133	27
Dec.	35	140	35
Jan. '13	-	133	-

Note: Figures published here are based on operational data available at the time of this report. Data in subsequent issues may not agree.

CHART 3 – Prison Population
January 1, 2012 to January 7, 2012

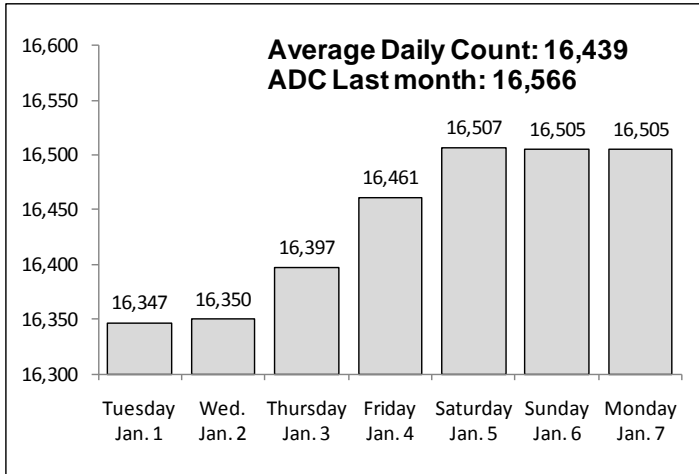


CHART 6 – Monthly DOC Admissions by Type
Nov. 2011 through Dec. 2012

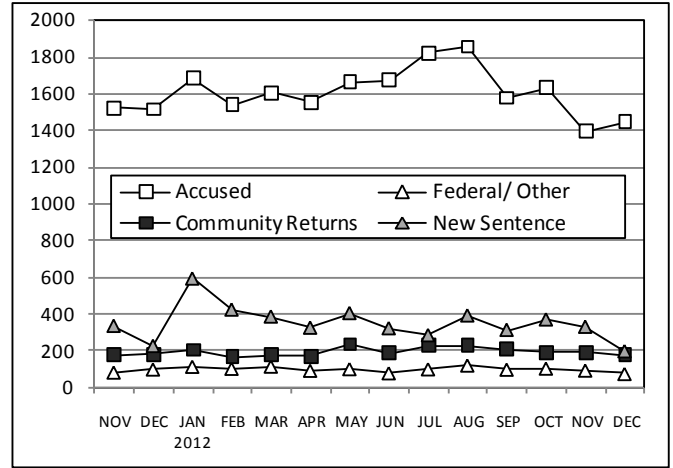


CHART 4 – Prison Population, first-of-month
January 1 through December 1

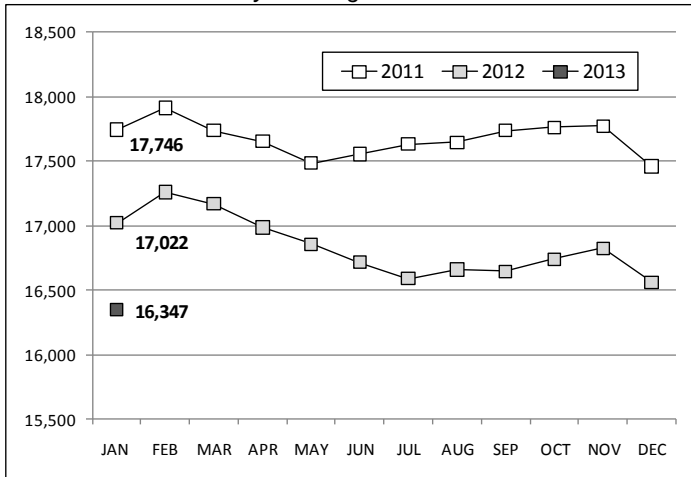


CHART 7 – Readmissions from Community Release
December 2012

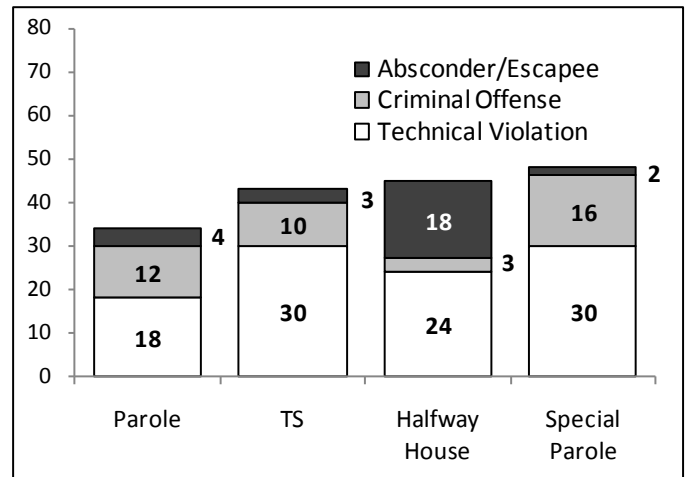


CHART 5 – Monthly Statewide Criminal Arrests
2011 versus 2012

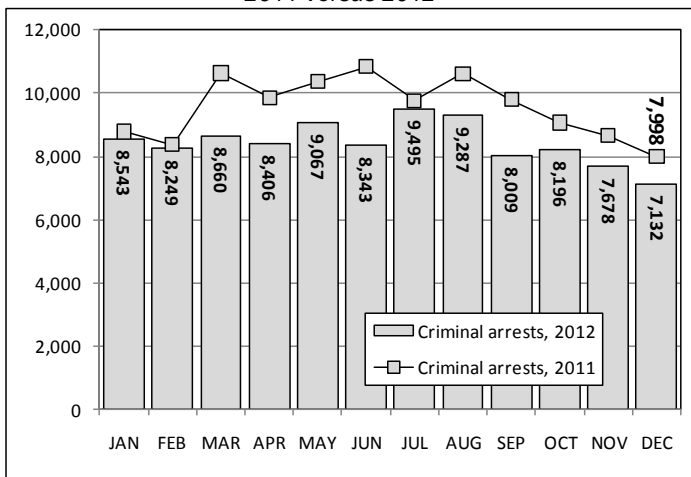
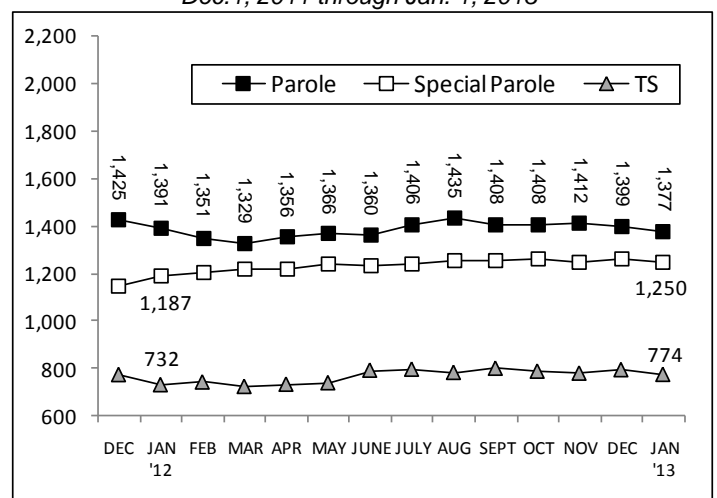


CHART 8 – Parole, TS and Special Parole, supervised cases
Dec. 1, 2011 through Jan. 1, 2013



Note: Data for all charts, with the exception of Chart 5, was supplied by CT DOC. Data for Chart 5 is based on new case starts in the state Offender-Based Tracking System (OBTS).