

OPM - Criminal Justice Policy & Planning Division

Monthly Indicators Report

Highlights

- 16,757 prisoners were incarcerated in state prisons on February 1, 2013. Between January 1st and February 1st, the prison population grew by 410 prisoners.
- OPM publishes its prison population forecast for 2013 this month. In the new forecast, OPM anticipates that the prison population will fall moderately over the coming year. If accurate, the prison population on Jan. 1, 2014 will be in the vicinity of 16,010 (see chart 2a).
- Each year in December, prison observers expect a regular drop in the inmate population. In fact, the decline in the year-end prison population generally begins in November. Since 1992, prison population has declined, on average, by 285 offenders during the month of December. The average decline for both November and December was 408 prisoners.
- Typical end-of-the-year drops in the inmate count are normally followed by a rebound in January, when the courts become crowded with cases deferred during the holiday season followed by a surge in case dispositions. In December, for example, 2,190 people were sentenced by the court to terms of probation. In January, that figure jumped to 2,692, a 23% increase. In December, 194 people were sentenced to prison. In January that number jumped to 539, a increase of 178%.

Please direct comments or questions to: opm.mir@ct.gov

Prison Population Forecast

For most of 2012, OPM's prison population forecast over-estimated the number of prisoners who would be incarcerated in the state. By August, the projection was off by 3.7%, or about 600 prisoners. If there is was bright side, it was that the projection had been too conservative. It would have been much worse for the state had OPM underestimated the size of the prison population.

Despite missing the mark for most of the year, by the end of the forecast period- February 2013 - the actual prison population and the forecast population closed to within a third of a percent, or 45 prisoners. The fact that the actual prison population and the projection drew so close at the end of the year illustrates how the prison system – and the larger criminal justice system – are generally self-correcting and, thus, relatively stable over time. While the prison population may expand or decline in short bursts, the entire system operates in a manner that is self-leveling. In 2008, when the parole system temporarily ground to a halt, the prison population surged very quickly. Over the next year, the system responded to severe overcrowding by steadily expanding the use of other discretionary release mechanisms.

TABLE 1 –Prison Population Forecast

	Actual (*Avg Daily Count)	OPM 2012 Forecast	Diff. %
FEB '12	17,224*	17,224	
MAR	17,117*	17,171	-0.3%
APR	16,973*	17,172	-1.2%
MAY	16,829*	17,100	-1.6%
JUN	16,698*	17,143	-2.6%
JUL	16,586*	17,213	-3.6%
AUG	16,603*	17,238	-3.7%
SEP	16,677*	17,263	-3.4%
OCT	16,745*	17,238	-2.9%
NOV	16,777*	17,121	-2.0%
DEC	16,566*	17,013	-2.6%
JAN '13	16,439*	16,587	-0.9%
FEB	16,712*	16,756	-0.3%

* Average Daily Count, first week of month

CHART 1 – Actual ADC of the prison population against the OPM forecast
January 1, 2011 through February 1, 2013

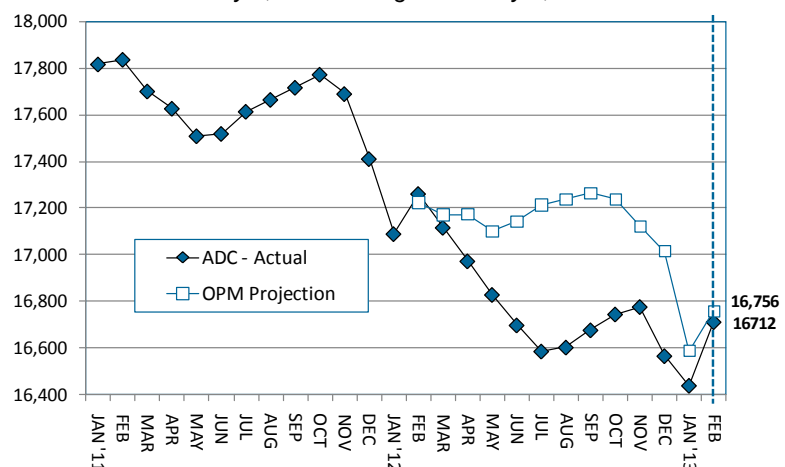
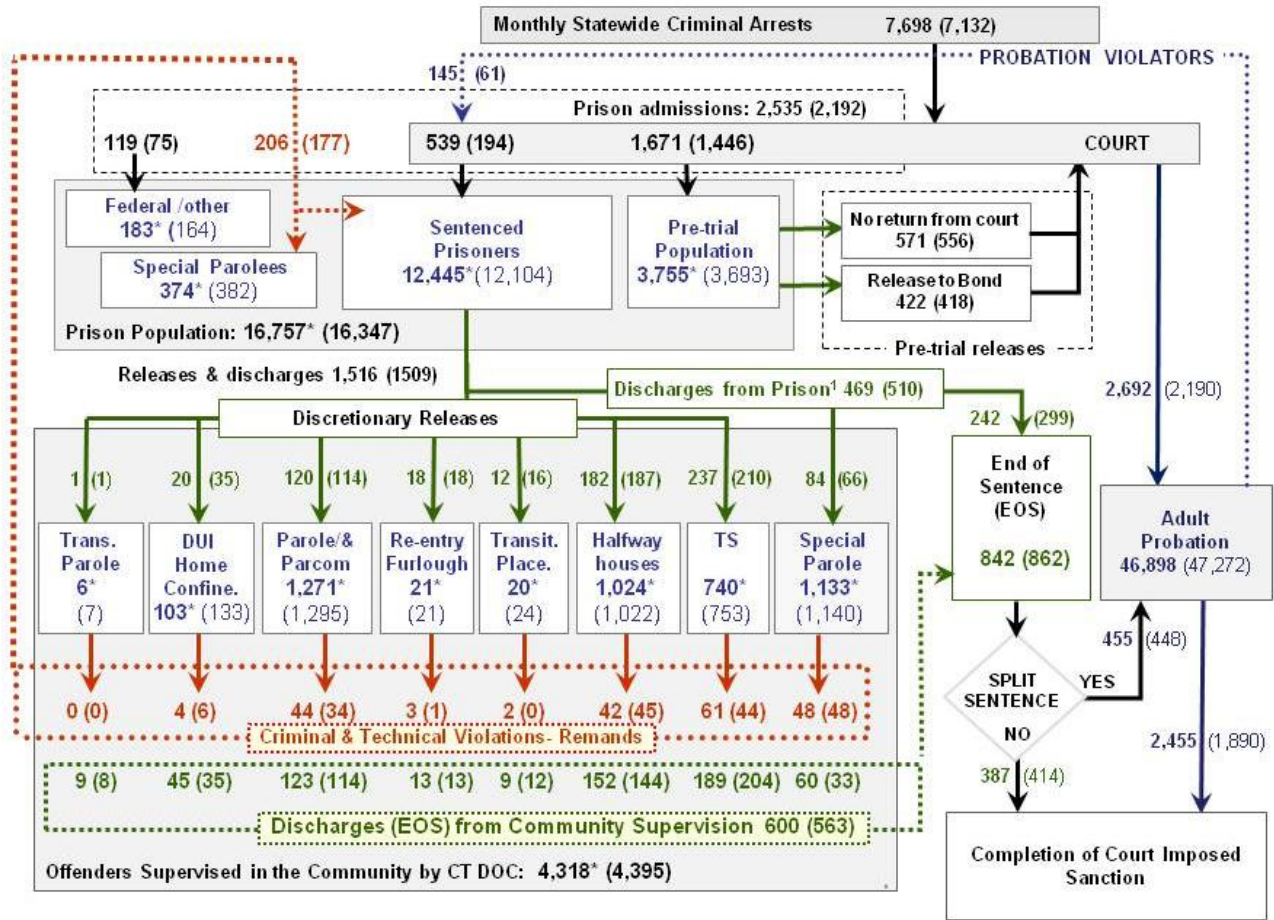


CHART 2 – Connecticut Criminal Justice System – Monthly Overview



This chart contains monthly operational data for January 2013 and daily counts reported on February 1, 2013. Asterisks (*) indicate the daily count on February 1st. Numbers enclosed by parenthesis are for the previous month. ¹DOC facility reports indicate that 469 offenders discharged (EOS) from DOC facilities during the month. Sources include: Arrest data - OBTS, Court and probation data - CSSD, all other data CT DOC

CHART 2a – OPM forecast of the prison population through February 2014

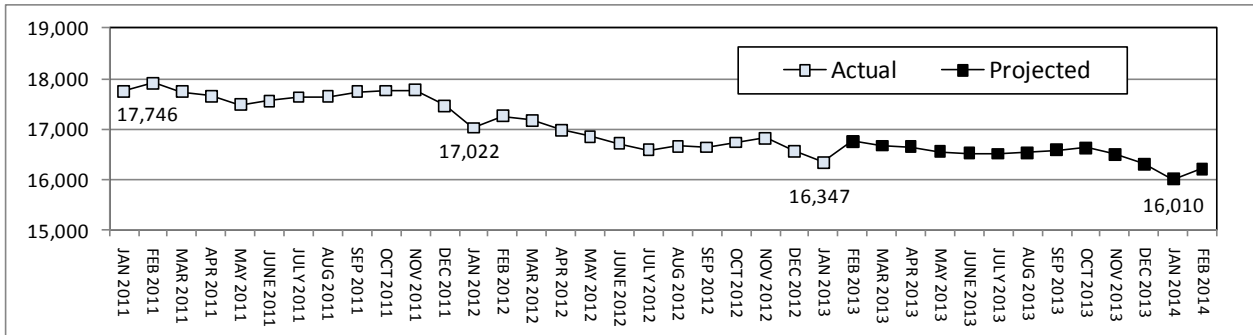


CHART 2b – Monthly admissions of sentenced offenders, Jan. 2008 through Jan. 2013

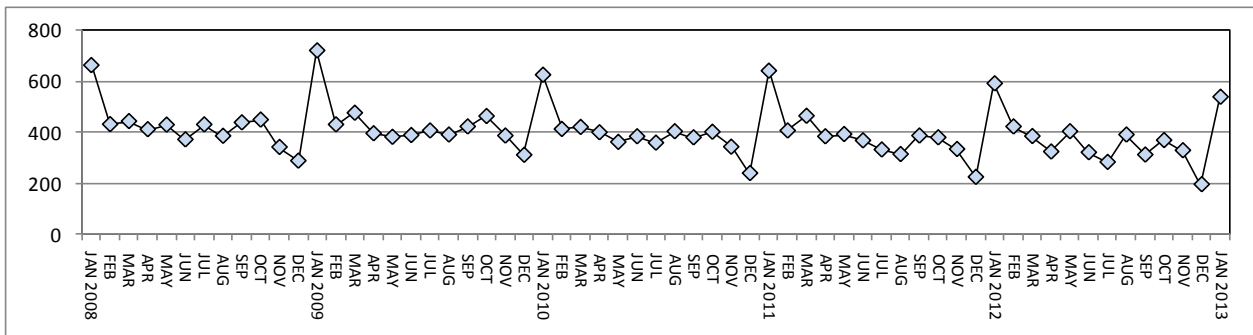


TABLE 2 – DOC Population Counts, First of the Month

	2012	2013	2013	2012	% Change	
	Dec. 1	Jan. 1	Feb. 1	Feb. 1	Monthly	Annual
DOC Facilities						
Federal/Other	172	164	183	166	11.6%	10.2%
Sentenced	12,310	12,104	12,445	13,130	2.8%	-5.2%
Special Parole	373	382	374	307	-2.1%	21.8%
Pre-trial	3,708	3,697	3,755	3,659	1.6%	2.6%
Total	16,563	16,347	16,757	17,262	2.5%	-2.9%
DOC Community						
Transfer Parole	7	7	6	4	-14.3%	50.0%
Parole/ Parcom Total	1,315	1,295	1,271	1,252	-1.9%	1.5%
Parole	1,150	1,126	1,104	1,083	-2.0%	1.9%
Parcom @ CT	165	169	167	169	-1.2%	-1.2%
Furlough	18	21	21	16	0.0%	31.3%
Trans Placement	25	24	20	7	-16.7%	185.7%
Home confinement/DUI	140	133	103	0	-22.6%	-
Halfway House Total	1,027	1,022	1,024	1,096	0.2%	-6.6%
Comm Release	815	819	803	857	-2.0%	-6.3%
TS	10	11	9	15	-18.2%	-40.0%
Parole	84	82	82	99	0.0%	-17.2%
Transfer Parole	0	0	0	0	-	-
Special Parole	118	110	130	125	18.2%	4.0%
TS Total	783	753	740	728	-1.7%	1.6%
Special Parole	1,142	1,140	1,133	1,079	-0.6%	5.0%
Total	4,457	4,395	4,318	4,182	-1.8%	3.3%

TABLE 3 – DOC Admissions and Releases, Monthly Totals*

	2012	2012	2013	2012	% Change	
	Nov.	Dec.	Jan.	Jan.	Monthly	Annual
Admissions						
Federal/Other	94	75	119	115	58.7%	3.5%
Returns	190	177	206	204	16.4%	1.0%
Trans.Parole / DUI	6	6	6	0	-	-
Parole	36	34	44	49	29.4%	-10.2%
Trans Plac/Furlough	1	1	5	1	-	-
HWH	41	45	42	54	-6.7%	-22.2%
TS	53	43	61	41	41.9%	48.8%
Special Parole	53	48	48	59	0.0%	-18.6%
New Sentence	328	194	539	592	177.8%	-9.0%
VOP	89	61	145	168	137.7%	-13.7%
Pre-trial	1,396	1,446	1,671	1,686	15.6%	-0.9%
Total	2,008	1,892	2,535	2,597	34.0%	-2.4%
Releases						
Transfer Parole	1	1	1	4	-	-
Parole	140	114	120	163	5.3%	-26.4%
Furlough	17	18	18	10	0.0%	80.0%
Transfer Placement	13	16	12	4	-25.0%	-
Home Confinement DUI	41	35	20	0	-42.9%	-
HWH	210	187	182	198	-2.7%	-8.1%
TS	251	210	237	233	12.9%	1.7%
Special Parole	89	66	84	92	27.3%	-8.7%
End of Sentence	879	862	842	919	-2.3%	-8.4%
Total	1,641	1,509	1,516	1,623	0.5%	-6.6%
Pre-trial Releases*						
Did not return from Court	600	556	571	589	2.7%	-3.1%
Release to Bond	433	418	422	433	1.0%	-2.5%

* Totals reflect events not individuals.

Board of Pardons and Parole

TABLE 4a – Inmates with sentences greater than 24 months

	Parole eligible	Not eligible
Dec.	8,272	842
Jan. '13	8,284	844
Feb.	8,331	843

TABLE 4b – Parole hearings

	Hearings	Granted	Rate
Nov.	132	93	70%
Dec.	146	110	75%
Jan. '13	122	91	75%

DOC – Pre-trial offenders

TABLE 5 – Bond ranges, pre-trial prisoners

	Dec 2012	Jan 2013	Feb. 2013
Less than \$20K	17.0%	17.2%	16.9%
\$20K to < \$50K	16.9%	16.2%	16.2%
\$50K to <\$100K	22.8%	22.3%	21.8%
\$100K or higher	43.2%	44.3%	44.9%
Over \$1M	5.9%	6.2%	6.2%

TABLE 5a – Pre-trial inmates, length-of-stay

Weeks since last DOC admit	Dec. 2012	Jan. 2013	Feb. 2013
< 1 week	6.6%	9.7%	13.2%
1 to < 3 weeks	9.5%	11.8%	11.1%
3 to < 10 weeks	27.8%	24.6%	25.1%
10 to < 30 weeks	34.1%	33.1%	30.1%
30 wks or more	21.9%	20.8%	20.5%
	100%	100%	100%

Jail Re-interview Program

TABLE 6 – Monthly interviews and releases

	Offenders interviewed	Offenders released	Releases last year
Nov.	1,533	807	701
Dec.	1,609	878	731
Jan. '13	1,756	926	680

CSSD – Adult Probation

TABLE 7 –Pre-Trial & split-sentence starts

	Pre-trial Bail Case Starts	Client Supv. Starts	Split Sentence Starts
	Nov.	2,271	2,305
Dec.	2,086	2,190	448
Jan. '13	2,515	2,690	455

DUI home confinement

TABLE 8 – Releases and discharges

	Monthly releases to	On home confinement, 1st of month	Monthly discharges from
Nov.	41	133	27
Dec.	35	140	35
Jan. '13	20	133	45
Feb.	-	103	-

Note: Figures published here are based on operational data available at the time of this report. Data in subsequent issues may not agree.

CHART 3 – Prison Population
February 1, 2012 to February 7, 2012

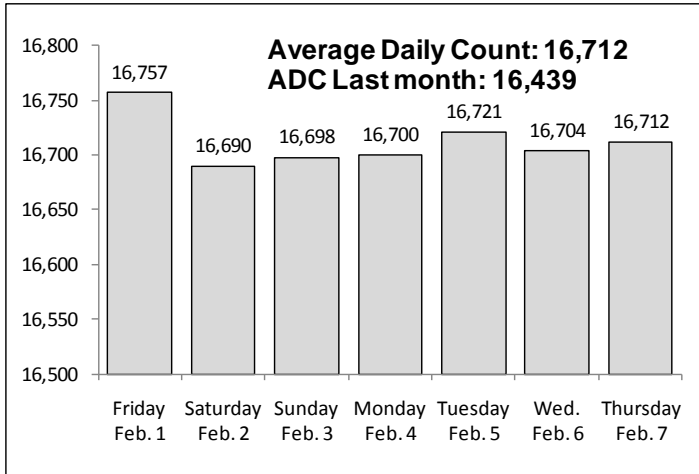


CHART 6 – Monthly DOC Admissions by Type
Dec. 2011 through Jan. 2013

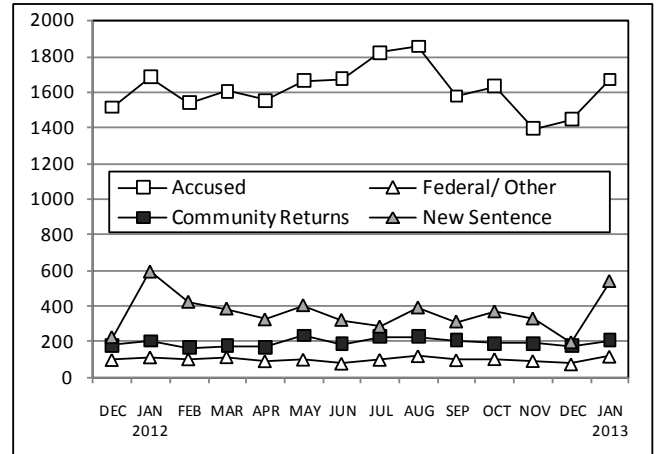


CHART 4 – Prison Population, first-of-month
2011 through 2013

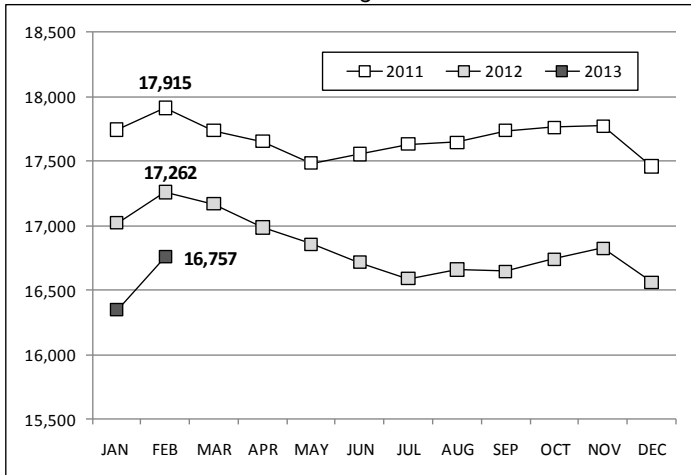


CHART 7 – Readmissions from Community Release
January 2013

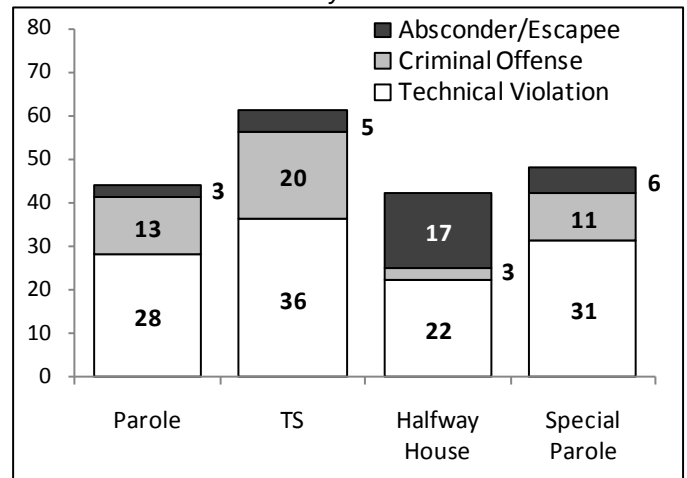


CHART 5 – Monthly Statewide Criminal Arrests
2012 versus 2013

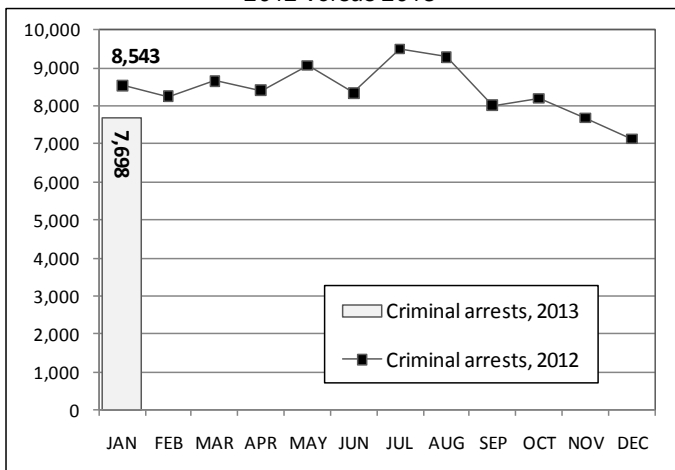
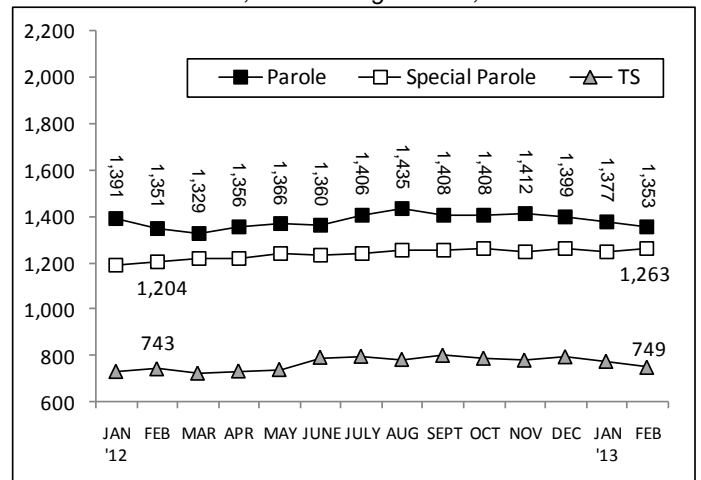


CHART 8 – Parole, TS and Special Parole, supervised cases
Jan. 1, 2012 through Feb. 1, 2013



Note: Data for all charts, with the exception of Chart 5, was supplied by CT DOC. Data for Chart 5 is based on new case starts in the state Offender-Based Tracking System (OBTS).