

OPM - Criminal Justice Policy & Planning Division

Monthly Indicators Report

Highlights

- In July, the prison population grew by 142 a slight increase over June when the population grew by 119. On July 1st, 17,142 people were incarcerated in state prisons. Last year, on the same date, there were 16,660 inmates incarcerated in state prison facilities (see chart 4).
- The Board of Pardons and Parole (BoPP) closed interest on 262 cases in July. In June, they closed interest on 5 cases. To provide readers with some context for the scale of this change, in the previous 20 months, the BoPP closed interest on a total of 252 cases (see chart 2a).
- According to BoPP, the agency is closing interest in cases involving parole-eligible offenders that are placed in Community Release programs prior to their parole hearings. BoPP has also begun closing interest in 85%-eligibility cases where, as a result of RREC, the end of sentence date exceeds parole eligibility by 6 months or less. Although the impact of these changes has not been quantified, it appears likely that they will create added, on-going demand for prison bed capacity moving forward.
- In recent months, significant attention has been focused on the state's parole hearing and release mechanisms. Monthly data on prisoner releases (see chart 8) shows that Transitional Supervision (TS) caseloads have declined substantially, along with parole caseloads, since the beginning of the 2013.

Contact this paper at:
opm.mir@ct.gov

Prison Population Forecast

The prison population continues to rise. The average daily count for the first week in August exceeded OPM's February 2013 estimate by 585 prisoners.

In May, this paper surmised that rising prison counts were likely due to changes in prisoner-release processes that were constricting the normal flow of offenders out to community supervision programs. Analysis, since then, has reinforced that initial assumption. The number of offenders being released to parole during the second quarter of 2013 (297) was 44% lower than the figure for 2012 (534).

The State's Board of Pardons and Parole (BoPP) is currently instituting significant changes in the way the parole process operates in Connecticut. In addition to applying "Structured Decision Making", a risk-based method that will, in theory, produce better parole outcomes, the Board is also implementing an upgrade to Case Notes, its Lotus-based case management system. BoPP received additional powers, during this legislative session, to waive its requirement to provide parole hearings to all parole-eligible inmates.

No quick fixes are available to reverse this current spike in the prison population. Although the DOC and BoPP have been meeting regularly to discuss ways to ameliorate the situation, it appears unlikely that the prison population will decline to projected levels any time soon.

TABLE 1 – Prison Population Forecast

	Avg. Daily Count, Actual	OPM 2012 Forecast	Inmate difference
JAN 2013	16,347	16,347	0
FEB	16,712	16,763	-51
MAR	16,619	16,673	-54
APR	16,597	16,655	-58
MAY	16,731	16,551	180
JUN	16,884	16,522	362
JUL	17,007	16,515	492
AUG	17,115	16,530	585
SEP		16,584	-
OCT		16,635	-
NOV		16,500	-
DEC		16,314	-
JAN 2014		16,010	-
FEB		16,215	-

Avg. Daily Count (ADC) for first week of month

Chart 1 – Actual ADC of the prison population against the OPM forecast January 1, 2012 through February 1, 2014

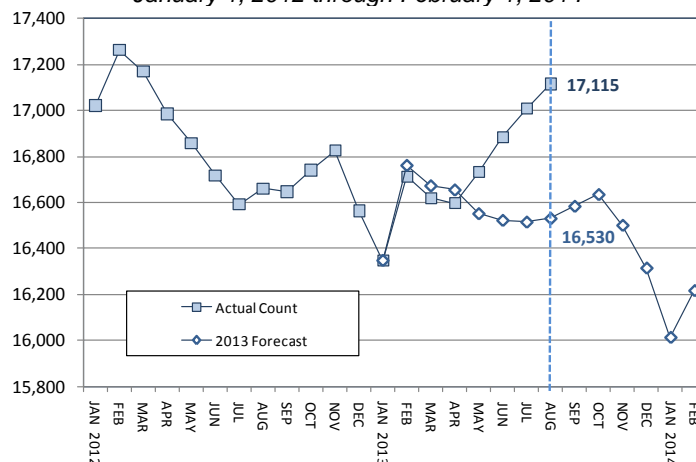
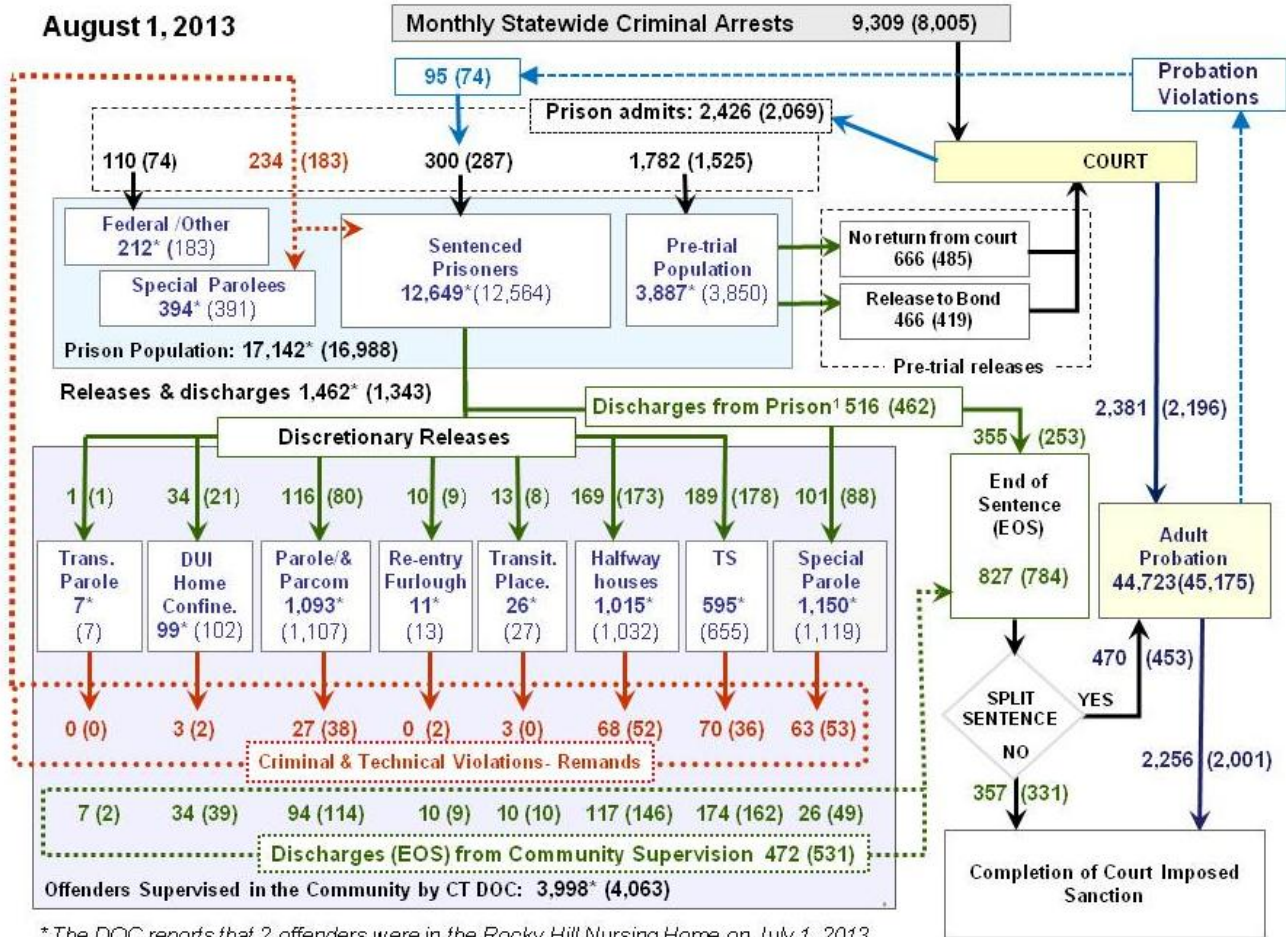
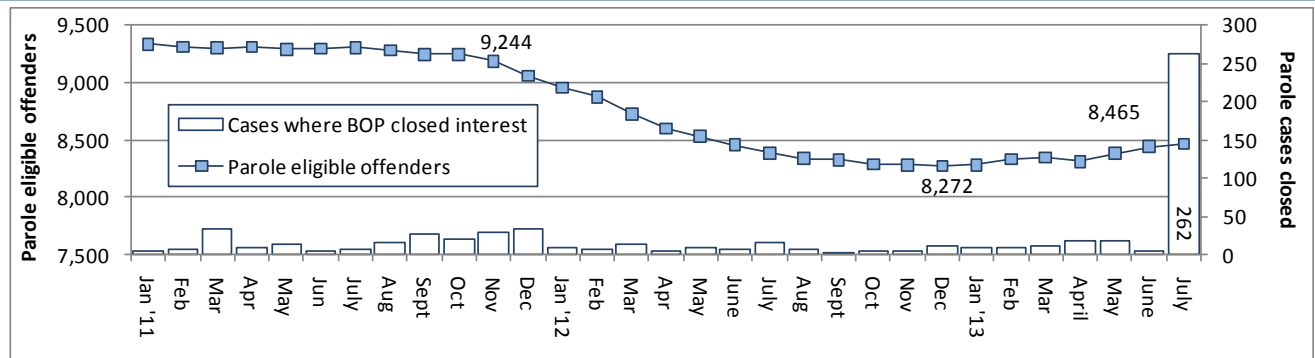


Chart 2 - Criminal justice, monthly flows



This chart contains monthly operational data for July 2013 and daily counts reported on August 1, 2013. Asterisks (*) indicate the daily count on August 1st. Figures for the previous month are enclosed by parentheses.
¹DOC facility reports indicate that 516 sentenced offenders discharged (EOS) from DOC facilities during the month.
 Sources of the data: Arrests - OBTS, Court and probation data - CSSD, all other data - CT DOC

Chart 2a – The parole-eligible prison population and parole cases closed by BoPP



New legislation (*PA 13-247, Section 376*) expanded the authority of the Board of Pardons and Paroles (BoPP) so that the agency is no longer required to provide a parole hearing to every parole-eligible inmate. Reflecting this new authority, BoPP closed interest on 262 parole cases in July. In the coming months, it is anticipated that the Board will close interest on hundreds more parole cases. The vast majority of these cases are expected to be for offenders who have parole eligibility at 85% of their sentences.

Although intended to streamline the parole process, a likely consequence of this legislation may be that more offenders, particularly those convicted on more serious charges, will be discharged at the end of their sentences without any form of community supervision. In recent years, the state's re-entry policy had rested on the assumption that offenders who were supervised in the community adjusted better and recidivated less than offenders who served out their sentences in prison.

Table 2 – The first-of-month population counts

	2013	2013	2013	2012	% Change	
	June 1	July 1	Aug. 1	Aug. 1	Monthly	Annual
DOC Facilities						
Federal/Other	191	183	212	158	15.8%	34.2%
Sentenced	12,594	12,564	12,649	12,348	0.7%	2.4%
Special Parole	413	391	394	344	0.8%	14.5%
Pre-trial	3,671	3,850	3,887	3,810	1.0%	2.0%
Total	16,869	16,988	17,142	16,660	0.9%	2.9%
DOC Community						
Transfer Parole	6	7	7	9	-	-
Parole/ Parcom Tot:	1,156	1,107	1,093	1,352	-1.3%	-19.2%
Parole	992	940	926	1,181	-1.5%	-21.6%
Parcom @ CT	164	167	167	171	0.0%	-2.3%
Furlough	13	13	11	33	-15.4%	-66.7%
Trans Placement	32	27	26	17	-3.7%	52.9%
DUI/Home confine.	122	102	99	116	-2.9%	-14.7%
Halfway House Tota	1,006	1,032	1,015	1,038	-1.6%	-2.2%
Comm Release	753	771	756	831	-1.9%	-9.0%
TS	12	15	17	7	13.3%	142.9%
Parole	87	84	93	83	10.7%	12.0%
Transfer Parole	0	0	0	0	-	-
Special Parole	154	162	149	117	-8.0%	27.4%
TS Total	665	655	595	775	-9.2%	-23.2%
Nursing home	1	1	2	0	-	-
Special Parole	1,107	1,119	1,150	1,141	2.8%	0.8%
Total	4,107	4,063	3,998	4,481	-1.6%	-10.8%

Table 3 – Monthly admissions, releases and discharges*

	2013	2013	2013	2012	% Change	
	May	June	July	July	Monthly	Annual
Admissions						
Federal/Other	111	74	110	101	48.6%	8.9%
Returns	196	183	234	227	27.9%	3.1%
Trans.Parole / DUI	11	2	3	10	-	-
Parole	41	38	27	46	-28.9%	-41.3%
Trans Plac/Furlough	6	2	3	1	-	-
HWH	38	52	68	56	30.8%	21.4%
TS	61	36	70	62	94.4%	12.9%
Special Parole	39	53	63	52	18.9%	21.2%
New Sentence	356	287	300	282	4.5%	6.4%
VOP	103	74	95	88	28.4%	8.0%
Pre-trial	1,662	1,525	1,782	1,824	16.9%	-2.3%
Total	2,325	2,069	2,426	2,434	17.3%	-0.3%
Releases						
Transfer Parole	0	1	1	5	-	-
Parole	109	80	116	157	45.0%	-26.1%
Furlough	6	9	10	30	11.1%	-66.7%
Transfer Placement	14	8	13	6	62.5%	116.7%
Home Confinement DL	49	21	34	38	61.9%	-10.5%
HWH	151	173	169	196	-2.3%	-13.8%
TS	205	178	189	263	6.2%	-28.1%
Special Parole	84	88	101	85	14.8%	18.8%
Nursing home	0	1	2	-	-	-
End of Sentence	884	784	827	838	5.5%	-1.3%
Total	1,502	1,343	1,462	1,618	8.9%	-9.6%
Pre-trial Releases*						
Did not return from Cox	583	485	666	598	37.3%	11.4%
Release to Bond	425	419	466	495	11.2%	-5.9%

* Totals reflect events not individuals.

Board of Pardons and Paroles

Table 4a – Inmates with sentences > 24 months

	Parole eligible	Not eligible
June	8,440	860
July	8,465	861
August	8,471	862

Table 4b – Parole hearings

	Hearings	Granted	Rate
May	186	149	80%
June	166	133	80%
July	139	106	76%

Pre-trial detainees

Table 5 – Bond ranges, pre-trial prisoners

	June 1, 2013	July 1, 2013	Aug. 1, 2013
Bond amount			
Less than \$20K	15.5%	16.9%	17.3%
\$20K to < \$50K	17.9%	17.3%	17.7%
\$50K to <\$100K	21.0%	20.9%	21.2%
\$100K or higher	45.6%	44.9%	43.9%
Over \$1M	6.1%	5.7%	5.5%

Table 5a – Pre-trial inmates, length-of-stay

Weeks since last DOC admit	June 1, 2013	July 1, 2013	Aug. 1, 2013
< 1 week	13.6%	13.8%	13.8%
1 to < 3 weeks	11.4%	11.8%	11.5%
3 to < 10 weeks	27.2%	27.1%	26.3%
10 to < 30 weeks	25.6%	27.2%	28.1%
30 wks or more	22.1%	20.0%	20.3%
	100%	100%	100.0%

Court Support Services Division

Table 6 – The Jail Re-interview Program

	Offenders interviewed	Offenders released	Releases last year
May	1,839	942	733
June	1,641	848	751
July	1,824	1,016	709

Table 7 – Pre-Trial & split-sentence starts

	Pre-trial Bail Case Starts	Client Supv. Starts	Split Sentence Starts
May	2,488	2,472	432
June	2,440	2,196	453
July	2,670	2,381	470

DUI – Home confinement

Table 8 – Releases, count and discharges

	Monthly releases to	On home confinement, 1st of month	Monthly discharges from
June	21	122	39
July	34	102	34
Aug.	-	99	-

Note: Figures published here are based on operational data available at the time of publication. Data in subsequent issues may not agree.

Chart 3 – Prison Population
August 1, 2013 to August 7, 2013

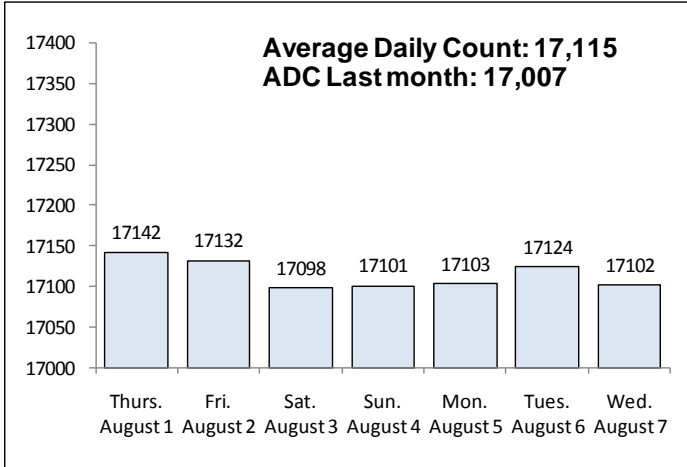


Chart 6 – Monthly DOC Admissions
June 2012 through July 2013

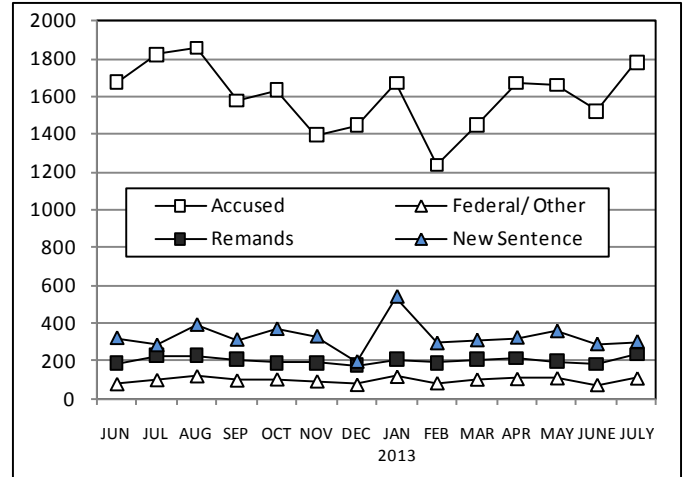


Chart 4 – Prison Population, first-of-month
2011 through 2013

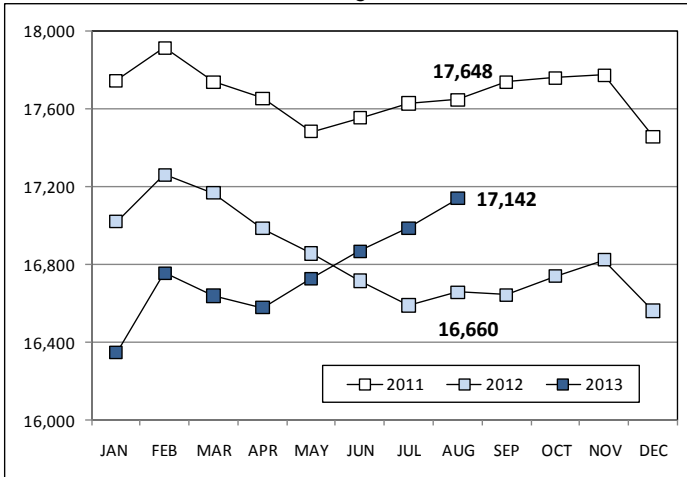


Chart 7– Remands from Community Release
July 2013

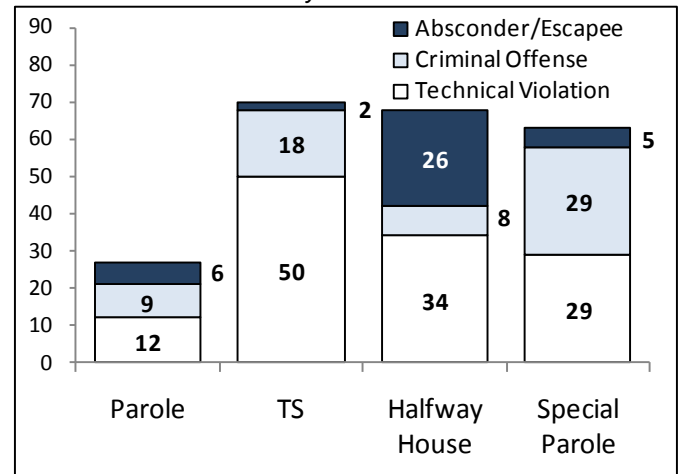


Chart 5 – Monthly Statewide Criminal Arrests
2012 versus 2013

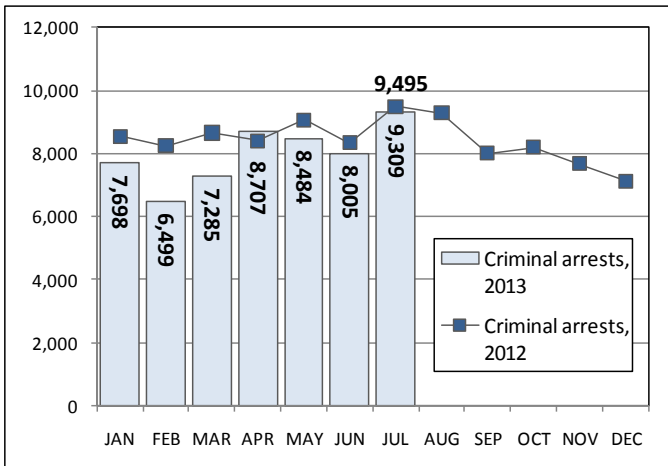
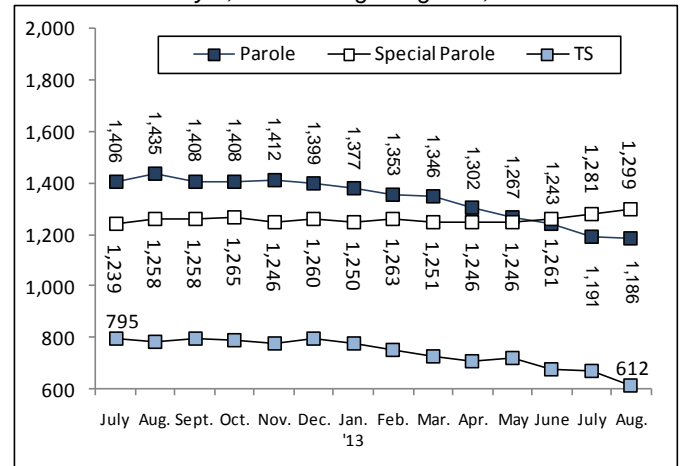


Chart 8 – Parole, TS and Special Parole, supervised cases
July 1, 2012 through August 1, 2013



Note: Data for all charts, with the exception of Chart 5, was supplied by CT DOC. Data for Chart 5 is based on new case starts in the state Offender-Based Tracking System (OBTS). Chart 8 includes offenders in halfway houses.