

OPM - Criminal Justice Policy & Planning Division

Monthly Indicators Report

Highlights

- On April 1, 16,580 offenders were incarcerated in CT prisons. During March, the population fell by 61.
- The number of prisoners in community supervision programs on April 1st was 0.7% lower than it was on April 1st last year (see Table 2). The number offenders on parole and TS declined by 4.3% and 3.3% respectively. The number of offenders on DUI/home increased from 31 to 104.
- James E. Dzurenda has been appointed as Interim Commissioner of the CT DOC following the departure of Leo Arnone.
- A review of offenders released to parole in 2008, revealed that 59% of parolees successfully completed the terms of their community supervision within three years of release. Another 36% were remanded to prison for technical or criminal violations during the same period. Only 29% of offenders who were remanded for technical violations were reparaoled (see Chart 2a).
- About one-in-six pre-trial prisoners are held on bonds of \$20,000 or less. One-in-five pre-trial prisoners have been incarcerated for at least 30 weeks or longer (see Tables 5 and 5a). On April 1, 21.7% of offenders in state prisons were on pre-trial status.

Recent technical glitches have been resolved and Monthly Indicators Report is back online on OPM's Criminal Justice Policy & Planning website. Contact this paper at: opm.mir@ct.gov

Prison Population Forecast

The prison population continues to move as projected in OPM's 2013 forecast.

During March, the prison population declined by 61 prisoners. Population swings during March are generally hard to predict. Over the last decade, the prison system had declined by an average of 40 prisoners during the month of March. The average in this case, however, is misleading. In the years 2005, 2007, 2011, 2012 and 2013, the prison population during March fell by an average of 101 prisoners. In years 2004, 2006, 2008, 2009, and 2010, the average prison population, in March, increased by 20.

The prison population in March has declined in 6 of the last 12 years. In five of those years, the prison population, measured from January to January, also declined. If recent history is an indicator of future performance, the prison population appears on a track to approach the 16,000-prisoner mark by the end of this year.

TABLE 1 –Prison Population Forecast

	Avg. Daily Count, Actual	OPM 2012 Forecast	Diff. %
JAN 2013	16,347	16,347	-
FEB	16,712	16,763	0.3%
MAR	16,619	16,673	0.3%
APR	16,597	16,655	0.4%
MAY		16,551	-
JUN		16,522	-
JUL		16,515	-
AUG		16,530	-
SEP		16,584	-
OCT		16,635	-
NOV		16,500	-
DEC		16,314	-
JAN 2014		16,010	-
FEB		16,215	-
Average Daily Count for first week of month			

Chart 1 – Actual ADC of the prison population against the OPM forecast
January 1, 2012 through February 1, 2014

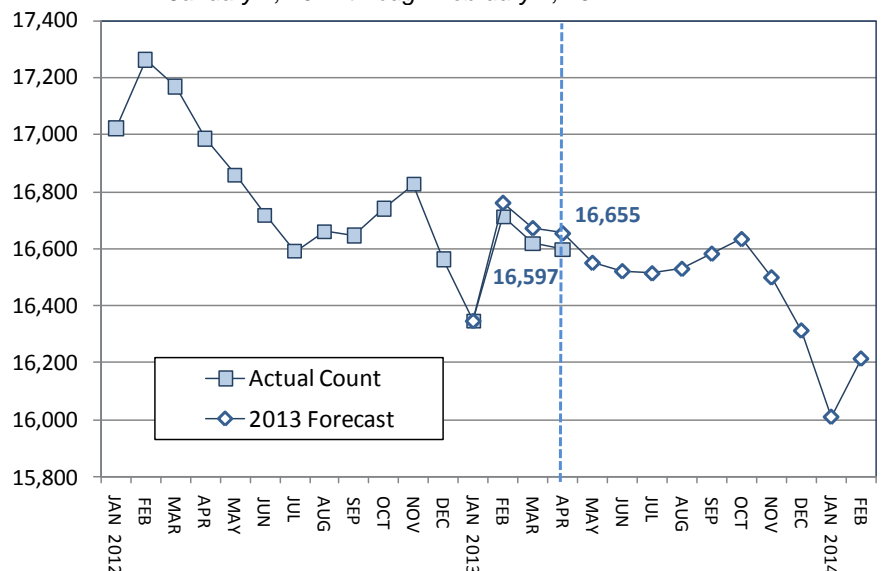
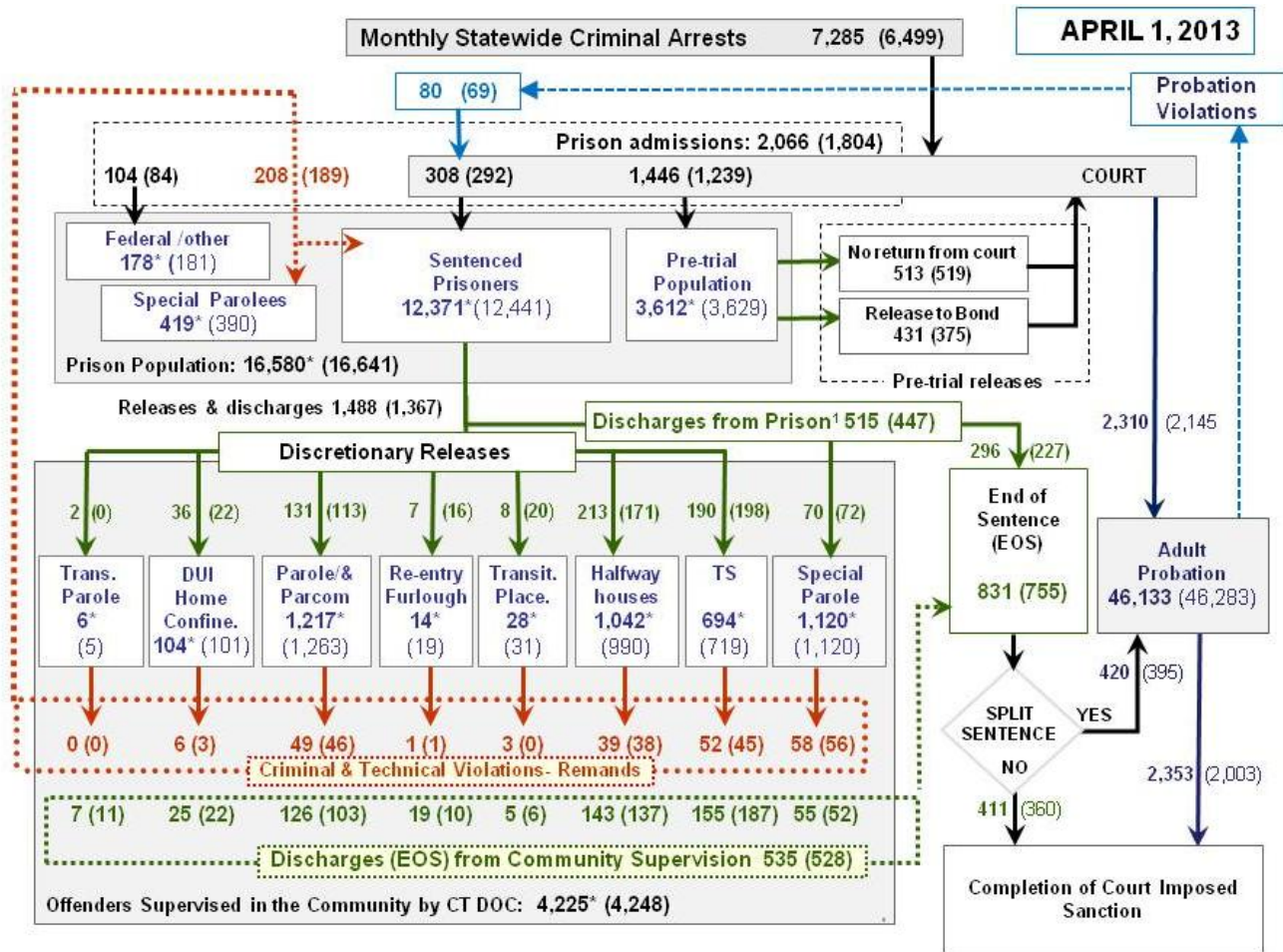


Chart 2 Criminal justice , monthly flows



This chart contains monthly operational data for March 2013 and daily counts reported on April 1, 2013. Asterisks (*) indicate the daily count on April 1st. Numbers enclosed by parenthesis are for the previous month. ¹DOC facility reports indicate that 515 sentenced offenders discharged (EOS) from DOC facilities during the month. Data source: Arrest data - OBTS, Court and probation data - CSSD, all other data - CT DOC

Chart 2a. Outcomes, offenders released to parole in 2008

During 2008, 1,547 offenders were released to parole. Over the next three years, 56.9% of these offenders ended their sentences in the community without incurring a technical or criminal violation. Almost 23% of parolees were remanded to prison, within three years, by their parole officers for technical violations. Another 12.9% were returned to prison for criminal violations. Just over 3% absconded and 2% returned to prison voluntarily to complete drug and alcohol programming with the Time Out Program.

Among technical violators, over half (53%) remained incarcerated until the completion of their prison sentences. Another 9% of these technical violators picked up a new prison sentence after being remanded, an indication that they were actually returned for a criminal offense instead of a technical one. Only 28.8% of technical violators were reparaoled.

Next move type	All parolees	Percent
Ended sentence on parole	880	56.9%
Technical violation	353	22.8%
Criminal violation	200	12.9%
Absconded	48	3.1%
Time out program	31	2.0%
Sent to other jurisdiction	13	0.8%
Died	12	0.8%
No change	10	0.6%
Total	1547	100.0%

Among the 56.9% of offenders who successfully completed parole, one third (33%) were back in prison within three years of their releases.

Table 2 – DOC Population Counts, First of the Month

	2013	2013	2013	2012	% Change	
	Feb. 1	Mar. 1	Apr. 1	Apr. 1	Monthly	Annual
DOC Facilities						
Federal/Other	183	181	178	169	-1.7%	5.3%
Sentenced	12,445	12,441	12,371	12,837	-0.6%	-3.6%
Special Parole	374	390	419	324	7.4%	29.3%
Pre-trial	3,755	3,629	3,612	3,656	-0.5%	-1.2%
Total	16,757	16,641	16,580	16,986	-0.4%	-2.4%
DOC Community						
Transfer Parole	6	5	6	8	20.0%	-25.0%
Parole/ Parcom Total	1,271	1,263	1,217	1,272	-3.6%	-4.3%
Parole	1,104	1,092	1,052	1,098	-3.7%	-4.2%
Parcom @ CT	167	171	165	174	-3.5%	-5.2%
Furlough	21	19	14	13	-26.3%	7.7%
Trans Placement	20	31	28	9	-9.7%	211.1%
Home confinement/DI	103	101	104	31	3.0%	235.5%
Halfway House Total	1,024	990	1,042	1,093	5.3%	-4.7%
Comm Release	803	776	818	883	5.4%	-7.4%
TS	9	9	13	16	44.4%	-18.8%
Parole	82	73	85	84	16.4%	1.2%
Transfer Parole	0	0	0	1	-	-
Special Parole	130	131	126	109	-3.8%	15.6%
TS Total	740	719	694	718	-3.5%	-3.3%
Special Parole	1,133	1,120	1,120	1,111	0.0%	0.8%
Total	4,318	4,248	4,225	4,255	-0.5%	-0.7%

Table 3 – DOC Admissions and Releases, Monthly Totals*

	2013	2013	2013	2012	% Change	
	Jan.	Feb.	Mar.	Mar.	Monthly	Annual
Admissions						
Federal/Other	119	84	104	116	23.8%	-10.3%
Returns	206	189	208	175	10.1%	18.9%
Trans.Parole / DUI	6	3	6	0	-	-
Parole	44	46	49	36	6.5%	36.1%
Trans Plac/Furlough	5	1	4	2	-	-
HWH	42	38	39	39	2.6%	0.0%
TS	61	45	52	47	15.6%	10.6%
Special Parole	48	56	58	51	3.6%	13.7%
New Sentence	539	292	308	384	5.5%	-19.8%
VOP	145	69	80	80	15.9%	0.0%
Pre-trial	1,671	1,239	1,446	1,605	16.7%	-9.9%
Total	2,535	1,804	2,066	2,280	14.5%	-9.4%
Releases						
Transfer Parole	1	0	2	4	-	-
Parole	120	113	131	173	15.9%	-24.3%
Furlough	18	16	7	14	-56.3%	-50.0%
Transfer Placement	12	20	8	6	-60.0%	33.3%
Home Confinement DUI	20	22	36	26	63.6%	38.5%
HWH	182	171	213	219	24.6%	-2.7%
TS	237	198	190	240	-4.0%	-20.8%
Special Parole	84	72	70	83	-2.8%	-15.7%
End of Sentence	842	755	831	1,011	10.1%	-17.8%
Total	1,516	1,367	1,488	1,776	8.9%	-16.2%
Pre-trial Releases*						
Did not return from Court	571	519	513	560	-1.2%	-8.4%
Release to Bond	422	375	431	474	14.9%	-9.1%

* Totals reflect events not individuals.

Board of Pardons and Parole

Table 4a – Inmates with sentences greater than 24 months

	Parole eligible	Not eligible
Feb.	8,331	843
Mar.	8,344	847
Apr.	8,311	848

Table 4b – Parole hearings

	Hearings	Granted	Rate
Jan. '13	122	91	75%
Feb.	121	77	64%
Mar.	113	66	58%

Pre-trial detainees

Table 5 – Bond ranges, pre-trial prisoners

Bond amount	Feb. 1, 2013	Mar. 1, 2013	Apr. 1, 2013
Less than \$20K	16.9%	17.1%	17.0%
\$20K to < \$50K	16.2%	15.5%	15.8%
\$50K to < \$100K	21.8%	21.1%	21.7%
\$100K or higher	44.9%	46.3%	45.5%
Over \$1M	6.2%	6.4%	6.3%

Table 5a – Pre-trial inmates, length-of-stay

Weeks since last DOC admit	Feb. 1, 2013	Mar. 1, 2013	Apr. 1, 2013
< 1 week	13.2%	13.3%	13.8%
1 to < 3 weeks	11.1%	8.8%	10.6%
3 to < 10 weeks	25.1%	25.9%	24.2%
10 to < 30 weeks	30.1%	30.3%	28.8%
30 wks or more	20.5%	21.7%	22.6%
	100%	100%	100%

Court Support Services Division

Table 6 – Monthly interviews and releases

	Offenders interviewed	Offenders released	Releases last year
Jan. '13	1,756	926	680
Feb.	1,370	852	689
Mar.	1,535	889	702

Table 7 – Pre-Trial & split-sentence starts

	Pre-trial Bail Case Starts	Client Supv. Starts	Split Sentence Starts
Jan. '13	2,515	2,690	455
Feb.	1,929	2,145	395
Mar.	2,237	2,353	420

DUI – home confinement

Table 8 – Releases and discharges

	Monthly releases to	On home confinement, 1st of month	Monthly discharges from
Feb.	22	103	22
Mar.	36	101	25
Apr.	-	104	-

Note: Figures published here are based on operational data available at the time of publication. Data in subsequent issues may not agree.

Chart 3 – Prison Population
April 1, 2012 to April 7, 2012

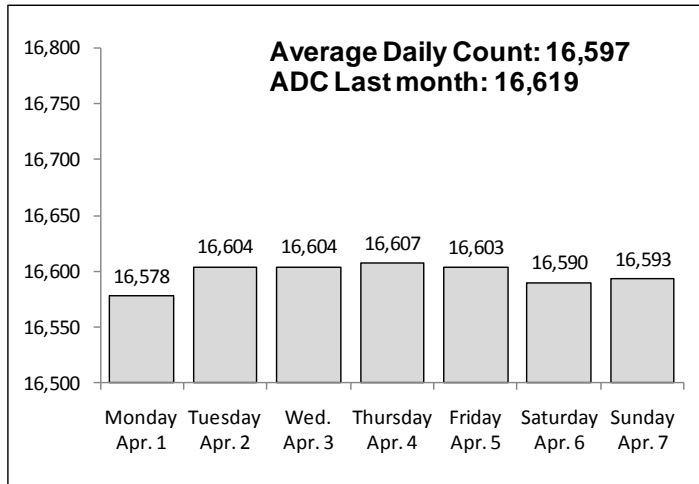


Chart 6 – Monthly DOC Admissions by Type
Feb. 2012 through Mar. 2013

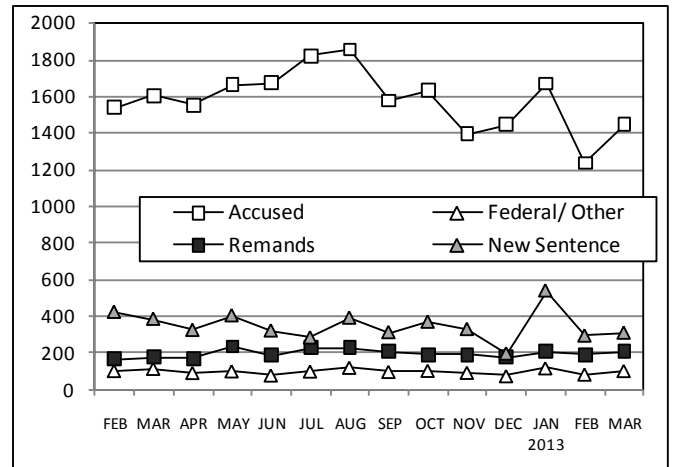


Chart 4 – Prison Population, first-of-month
2011 through 2013

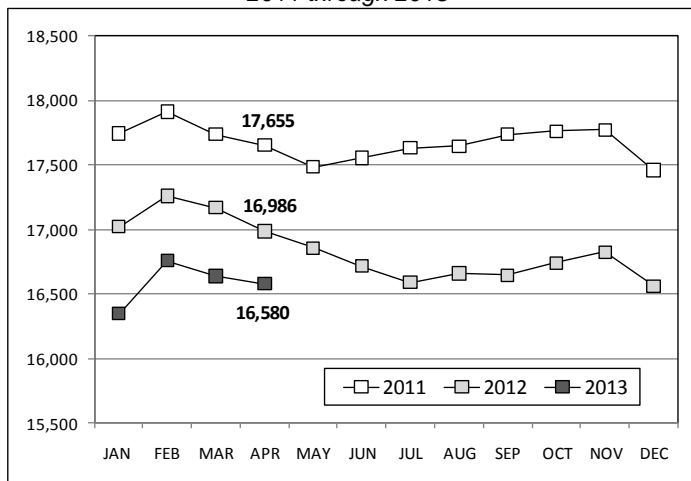


Chart 7 – Remands from Community Release
March 2013

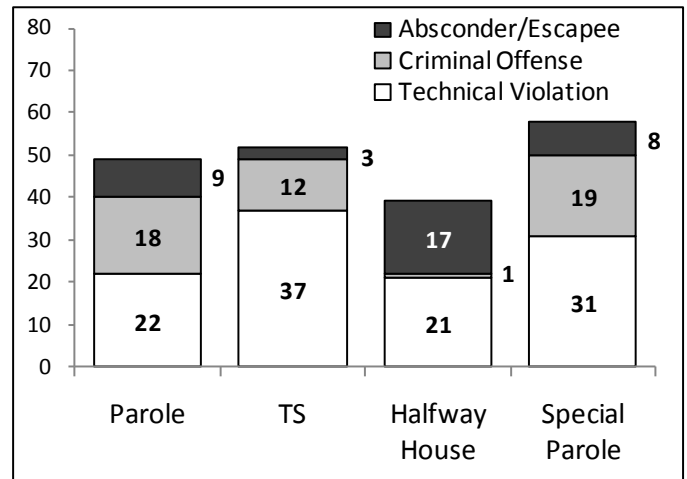


Chart 5 – Monthly Statewide Criminal Arrests
2012 versus 2013

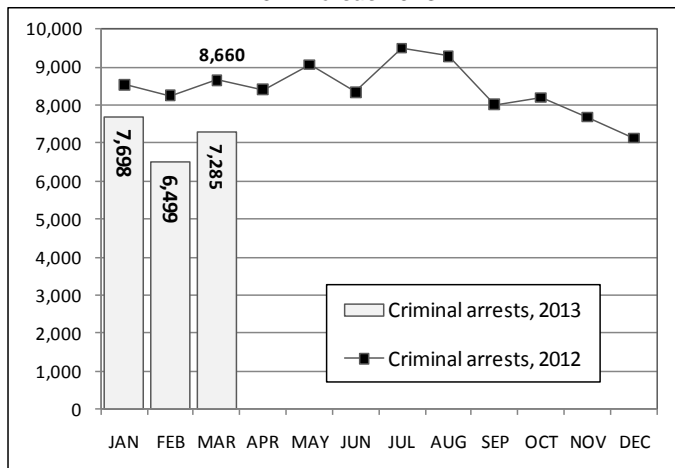
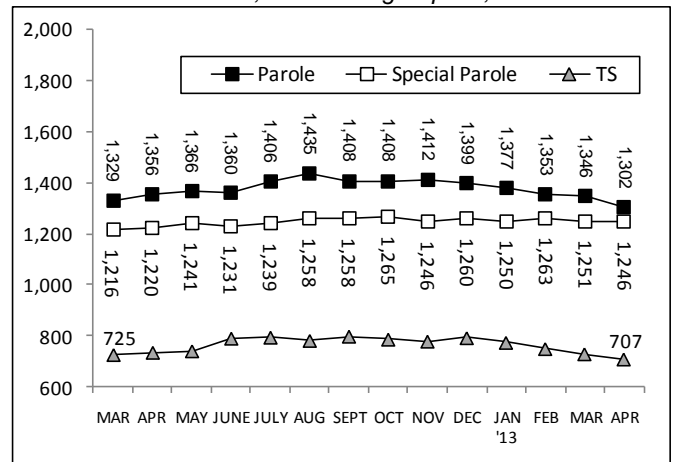


Chart 8 – Parole, TS and Special Parole, supervised cases
March 1, 2012 through April 1, 2013



Note: Data for all charts, with the exception of Chart 5, was supplied by CT DOC. Data for Chart 5 is based on new case starts in the state Offender-Based Tracking System (OBTS).