

Criminal Justice Policy & Planning Division Monthly Indicators Report



Monthly Indicators are available online at: www.ct.gov/OPM/CriminalJustice/Research

Highlights

- On May 1, 2011 there were 17,486 inmates incarcerated in the state. It was the lowest May 1st inmate total since May 2000, when 17,435 people were incarcerated.
- Gates Correctional Institution, in Niantic, will close at the end of the month. On May 1st, Gates had 489 sentenced inmates and 14 pre-trial detainees.
- As part of the administration's "plan B" to close the state budget deficit, Governor Malloy announced that his administration was prepared to close Bergin Correctional Institution in Mansfield on July 1, 2011. Bergin, a level 2 facility, had 975 inmates at the start of this month. The final decision to shutter Bergin is contingent on the Governor's ability to negotiate concessions with state employee unions.
- In February, DOC Commissioner Arnone approved a temporary expansion of programs so that release-eligible inmates can complete their programming more quickly. As a result of this initiative, the number of offenders on Transitional Supervision rose above 1,000 for the first time since January (See Chart 8).

Over the next few months, this publication will expand its coverage of the state criminal justice system. OPM is currently working with Court Support Services Division and the State Public Defender's Office to identify the types of data that would be most useful in describing the operations at the front end of the state criminal justice system.

Prison Population Forecast

The state's prison population has declined in seven of the last eight months (See Chart 1). Between Sept. 1st and May 1st, the inmate count shrank by 1,107 inmates (6%).

Although the speed and scale of this contraction is impressive, it is also unusual given that almost 80% of the reduction is due to dramatic reductions in the pre-trial prison population. While the total prison population, between September and May, fell by 6%, there was only a 1% decline in the sentenced population. In contrast, the pre-trial population fell from 4,256 to 3,376, an astonishing 21% drop.

OPM's February forecast had anticipated an increase in the prison population during the early months of the year. That increase never materialized. Although the forecast population is 1.6% above the actual population, the prison population has trended downward in a manner that is generally consistent with OPM's initial projection.

TABLE 1 –Prison Population Forecast

	Actual (*Avg Daily Count)	OPM 2011 Forecast	Diff. %
FEB '11	17,838*	-	-
MAR	17,702*	17,960	-1.4%
APR	17,628*	17,910	-1.6%
MAY	17,510*	17,792	-1.6%
JUN	-	17,787	-
JUL	-	17,786	-
AUG	-	17,810	-
SEP	-	17,950	-
OCT	-	18,035	-
NOV	-	17,931	-
DEC	-	17,758	-
JAN '12	-	17,375	-
FEB	-	17,640	-

* Average Daily Count, first week of month

CHART 1 – Total DOC Facility Population, Actual and Projected
January 1, 2010 through February 1, 2012

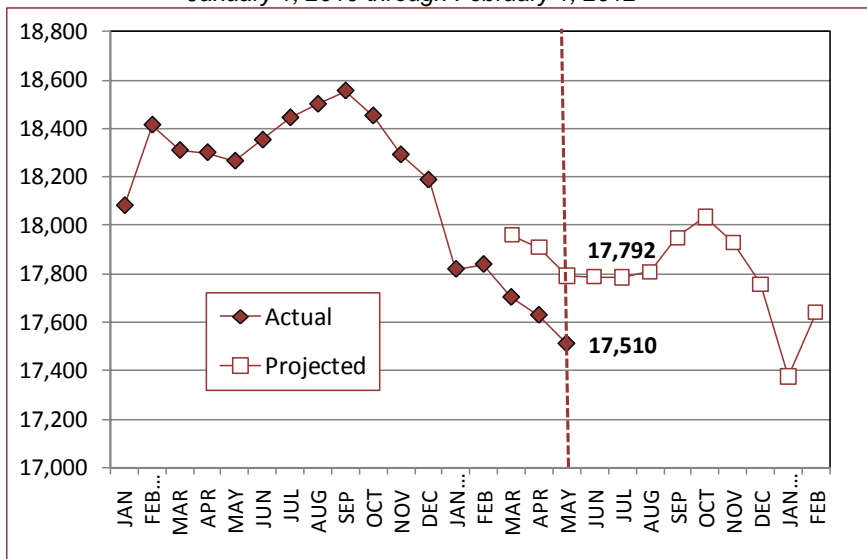
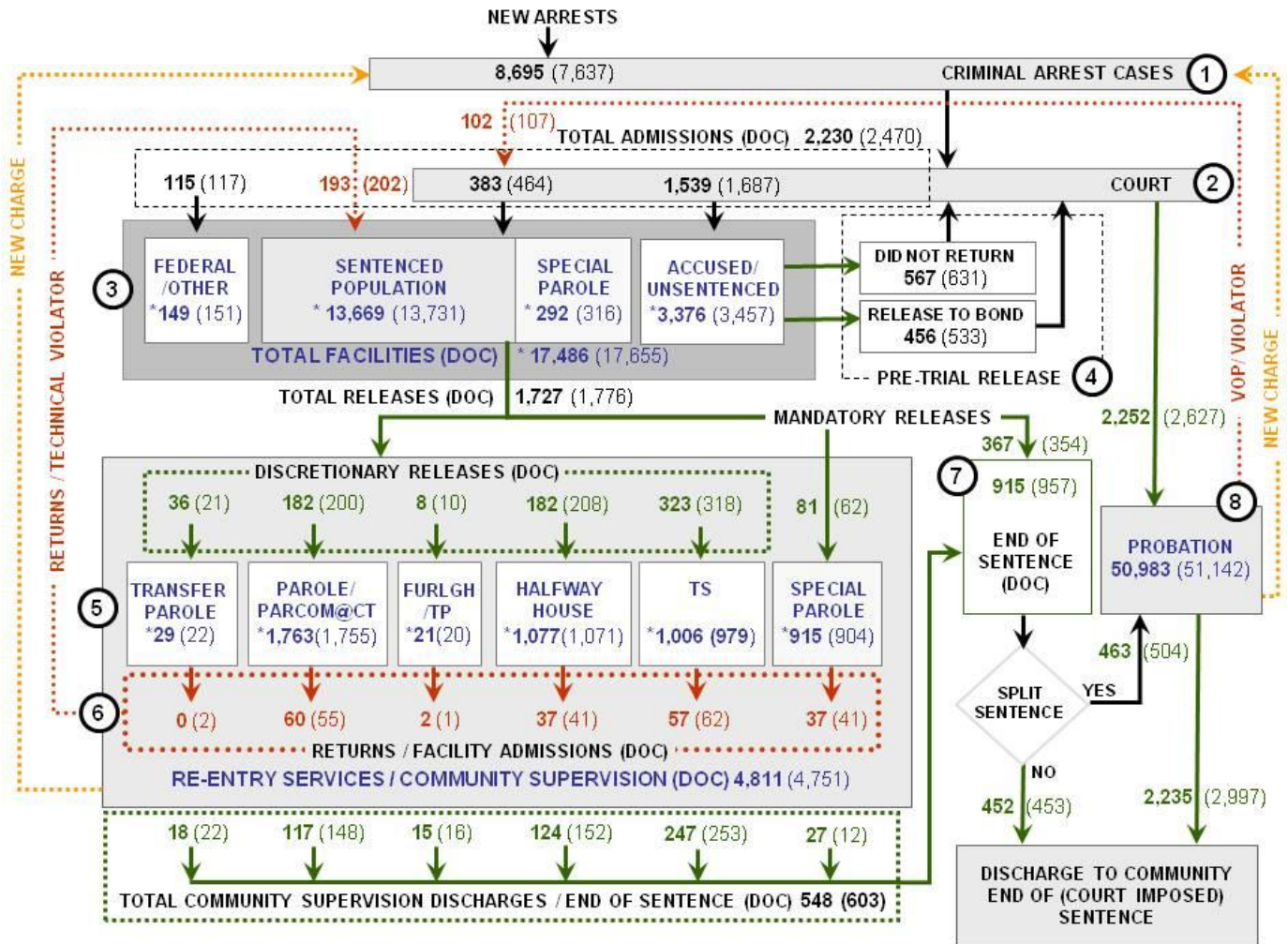


CHART 2 – Connecticut Criminal Justice System – Monthly Overview



Asterisks (*) indicate the population count on May 1, 2011.

Parentheses enclose figures for the previous month.

Sources: Arrest-Judicial/Court Operations; Court-Judicial/CSSD; Facility/Community Supervision-DOC

Unlike states that have county governments, the majority of agencies within Connecticut's criminal justice system are State agencies. The one exception is law enforcement, where there are over 90 local police departments and the Connecticut State Police.

- 1) Arrest:** An individual enters into the criminal justice system at the time of arrest.
- 2) Court:** At arraignment, judges review the charges filed against the accused and set a bail amount. Individuals who cannot meet bail conditions are incarcerated in DOC facilities to await trial. If the defendant is convicted, they may be sentenced to a range of sanctions including a fine, probation, or a term of incarceration.
- 3) DOC Facilities:** Total facility population at DOC contains the unsentenced population, which is awaiting trial, the sentenced population, inmates who have returned from special parole, and offenders charged in federal cases or non-state cases.
- 4) Pre-Trial Release:** Some defendants who are incarcerated pending the disposition of their cases may be eligible for a bond reduction or placement into pre-trial diversionary programs or treatment programs. These programs feature close coordination and cooperation between DOC, CSSD and the Department of Mental Health and Addiction Services (DMHAS).
- 5) Re-Entry Services:** Depending on several factors, an inmate may be eligible to complete a portion of his/her prison sentence under supervision of the DOC's Parole and Community Services Unit. Non-violent Inmates with sentences shorter than two years are eligible for Transitional Supervision after serving 50% of their sentences. Inmates serving sentences longer than two years may be eligible for parole.
- 6) Returns:** Offenders who violate the conditions of their community release may be returned to prison to complete the remainder of their sentences.
- 7) End of Sentence (EOS):** At the end of their sentences some offenders are required to complete a period of post-release supervision. Split-sentence offenders are supervised by the Judicial Branch's Office of Adult Probation. Offenders sentenced to special parole remain under DOC supervision.
- 8) Violation of Probation:** If an individual violates the terms of their probation, an arrest warrant must be issued, and the violator's case is returned to court.

TABLE 2 – DOC Population Counts, First of the Month

	2010	2011	2011	2010	% Change	
	Mar. 1st	Apr. 1st	May 1st	May 1st	Monthly	Annual
DOC Facility						
Federal/Other	145	151	149	146	-1.3%	2.1%
Sentenced	13,758	13,731	13,669	14,081	-0.5%	-2.9%
Special Parole	292	316	292	319	-8.2%	-8.5%
Accused/Unsentenced	3,544	3,457	3,376	3,713	-2.4%	-9.1%
Total	17,739	17,655	17,486	18,259	-1.0%	-4.2%
DOC Community						
Transfer Parole	40	22	29	55	24.1%	-47.3%
Parole/ Parcom Total	1,743	1,755	1,763	1,749	0.5%	0.8%
Parole	1,565	1,584	1,592	1,594	0.5%	-0.1%
Parcom @ CT	178	171	171	155	0.0%	10.3%
Furlgh/Trans Place Total	25	20	21	57	4.8%	-63.2%
Furlough	5	3	5	38	40.0%	-86.8%
Trans Placement	20	17	16	19	-6.3%	-15.8%
Halfway House Total	1,049	1,071	1,077	1,075	0.6%	0.2%
Comm Release	855	905	859	890	-5.4%	-3.5%
TS	18	21	16	16	-31.3%	0.0%
Parole	85	98	90	99	-8.9%	-9.1%
Transfer Parole	0	1	3	1	-	-
Special Parole	91	100	109	69	8.3%	58.0%
TS Total	952	979	1,006	915	2.7%	9.9%
Special Parole	911	904	915	844	1.2%	8.4%
Total	4,720	4,751	4,811	4,695	1.2%	2.5%

TABLE 3 – DOC Admissions and Releases, Monthly Totals

	2010	2010	2011	2010	% Change	
	Feb.	Mar.	April	April	Monthly	Annual
Admissions						
Federal/Other	71	117	115	82	-1.7%	40.2%
Returns	174	202	193	241	-4.5%	-19.9%
Transfer Parole	0	2	0	1	-	-
Parole	55	55	60	81	9.1%	-25.9%
Trans Plac/Furlough	1	1	2	8	-	-
HWH	29	41	37	42	-9.8%	-11.9%
TS	54	62	57	63	-8.1%	-9.5%
Special Parole	35	41	37	46	-9.8%	-19.6%
New Sentence	406	464	383	399	-17.5%	-4.0%
VOP	86	107	102	88	-4.7%	15.9%
Accused	1,303	1,687	1,539	1840	-8.8%	-16.4%
Total	1,954	2,470	2,230	2,562	-9.7%	-13.0%
Releases						
Transfer Parole	35	21	36	32	71.4%	12.5%
Parole	169	200	182	181	-9.0%	0.6%
Trans Plac/Furlough	14	10	8	44	-20.0%	-81.8%
HWH	155	208	182	209	-12.5%	-12.9%
TS	249	318	323	272	1.6%	18.8%
Special Parole	67	62	81	81	30.6%	0.0%
End of Sentence	910	957	915	934	-4.4%	-2.0%
Total	1,599	1,776	1,727	1,753	-2.8%	-1.5%
Pre-trial Releases*						
Did not return from Court	482	631	567	678	-10.1%	-16.4%
Release to Bond	427	553	456	630	-17.5%	-27.6%

*Monthly totals are measured by occurrence, not by individual.

Parole

Paroles and Parole hearings

The Board considered 238 parole cases at full panel hearings in April. In addition, the Board reviewed another 95 parole violation cases. Sixty-three (63) of these cases resulted in offenders being reparaoled; 37 cases had been for revocations; 26 were for rescissions.

TABLE 4A –Paroles Granted, Monthly

	Hearings	Granted	Rate
FEB	240	188	78%
MAR	275	224	81%
APR	238	224	94%

Data Notes: Figures are based on the data available at the time of this report. Data in subsequent issues may not agree.

The Board of Pardons and Paroles schedules parole hearing dates up to 18 months before an offender's eligibility date. This should allow the Board to have a greater impact on offender programming while the offender remains incarcerated. It should also provide DOC with more time to develop appropriate reintegration plans for each parolee. If properly implemented, this change should reduce the number of offenders that are incarcerated beyond their parole eligibility dates.

TABLE 4B –Transfer Parole Cases

	Reviewed	Granted	Denied	Continued	Rate
FEB	230	66	145	19	29%
MAR	261	67	174	20	26%
APR	123	58	58	7	47%

Probation

Court Support Services Division: total client caseload for April 2011: 50,983. In March the caseload was 51,142.

TABLE 5 – Monthly CSSD Direct Sentenced & Probationer Community Placements

	Community Based	Out-patient	Inpatient/ Resident	Total
JAN '11	1,303	858	19	2,180
FEB	1,286	849	27	2,162
MAR	1,154	1,185	26	2,365

Figures are based on the latest data available at publication time. Figures in subsequent issues may not agree with those published here.

Pre-trial Diversion and Supervision

TABLE 6 – Pre-trial Diversion & Supervision

	Pre-trial Bail Case Starts	Client Supv. Starts
FEB	2,109	2,119
MAR	2,673	2,627
APR	2,523	2,252

CHART 3 – Daily Facility Population
 May 1, 2011 to May 7, 2011

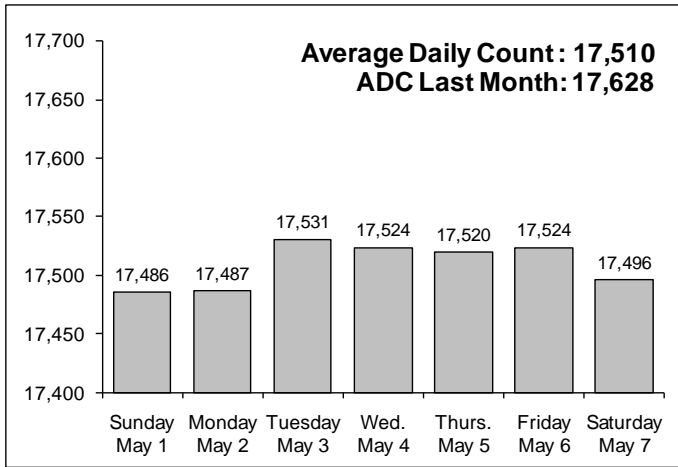


CHART 6 – Monthly DOC Admissions by Type
 March 2010 through April 2011

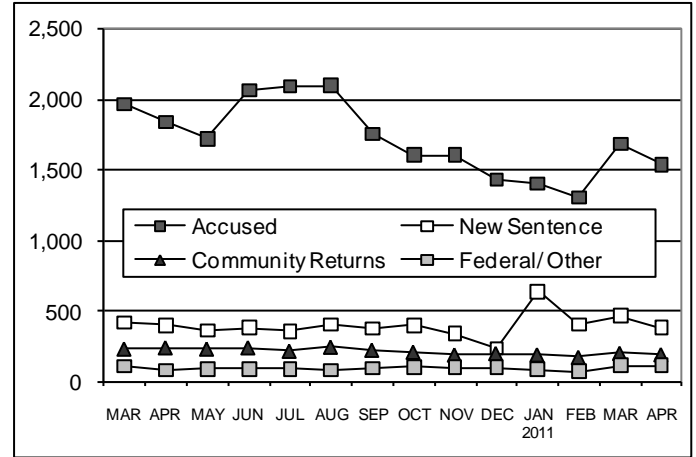


CHART 4 – Prison Population, first-of-month
 January 1 through December 1

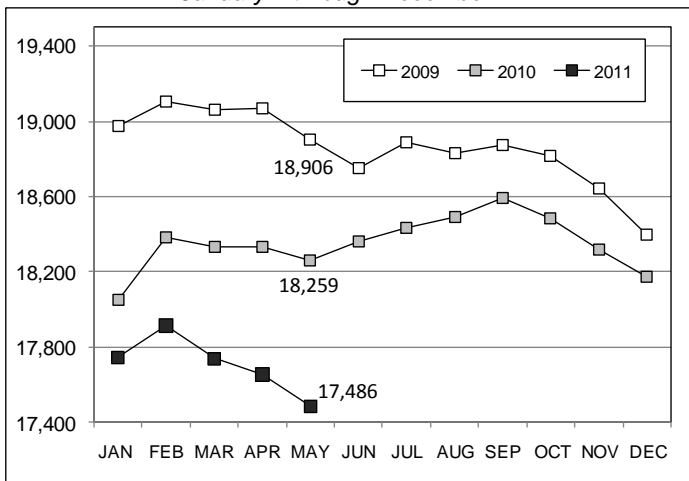


CHART 7 – Monthly Readmissions from Community Release
 April 2011

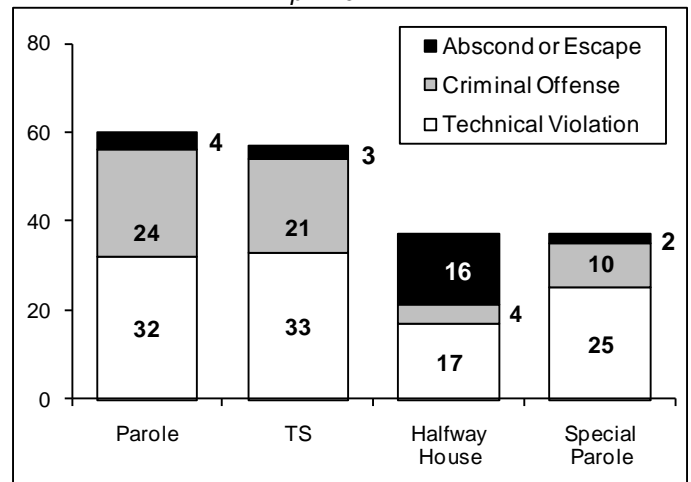


CHART 5 – Monthly Criminal Arrests
 2011 against the 3-year average

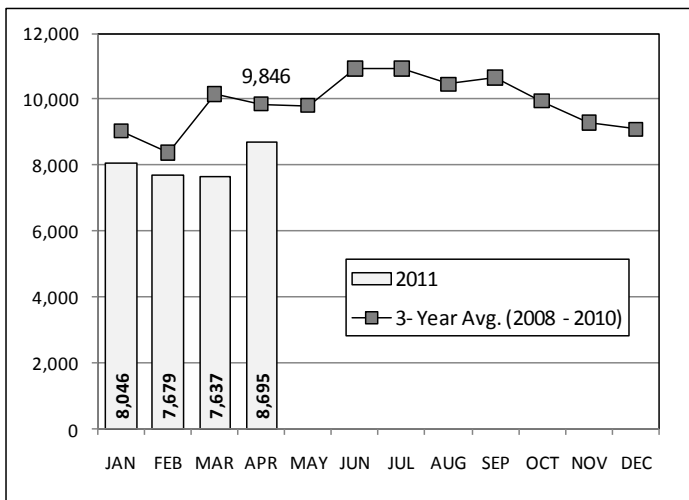
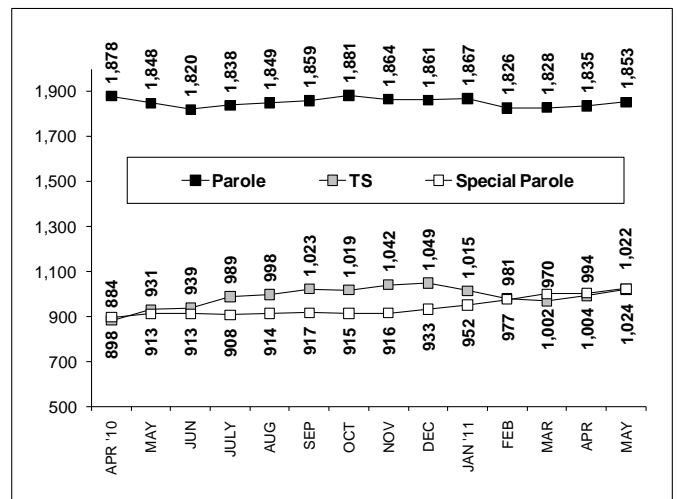


CHART 8 – Parole, TS and Special Parole, supervised cases
 April 1, 2010 to May 1, 2011



Note: Data for all charts, with the exception of Chart 5, was supplied by CT DOC. Data for Chart 5 was provided by Court Operations. Data in Chart 8 includes all offenders under parole jurisdiction.