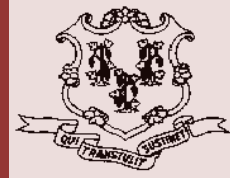


Criminal Justice Policy & Planning Division Monthly Indicators Report



Published by the Connecticut State Office of Policy and Management and the Connecticut Statistical Analysis Center

Highlights

- On December 1st, the state's inmate count was 17,459, 313 fewer than on the first of November. 2000 was the last year in which the December 1st prison count was lower.
- The implementation of the Risk Reduction Earned Credit (RREC) program is proceeding at the DOC. In October, RREC credits were applied to 252 offenders. During November, earned credits were applied to 506 prisoners who discharged from prison during the month. Credits were also applied to 618 offenders who discharged from community supervision programs. The average prisoner discharging from prison in November earned about 27 days of credit. The average offender in a community supervision program received about 63 days.
- The high volume of discharges from community programs, due to RREC, has resulted in a steep and rapid drop in parole and transitional supervision caseloads at DOC's Community Supervision Division (See Chart 8). In December 2010, there were 3,842 offenders under the DOC community supervision. Today there are about 3,345.
- The number of monthly, statewide criminal arrests has lagged the 3-year arrest average in every month in 2011 (See Chart 5).

CT's death row population increased from 10 to 11 on December 9th when Joshua Komisarjevsky received the death penalty for his role in the Cheshire murders in 2007.

Prison Population Forecast

OPM's forecast of the average daily prison count during the first week in December was off by 1.9%. Although OPM had projected a declining prison population during November, the introduction of Risk Reduction Earned Credits by DOC resulted in several hundred early discharges that were not anticipated when the forecast was produced in February.

According to DOC data, 1,351 prisoners were discharged from prison, at the end of their sentences during November (See Table 3). Approximately 500 of these prisoners (See Bullet 2 on this page) were released early because of credits. The high number of end-of-sentence (EOS) prison discharges in November produced a small spike in the number of offenders beginning split sentences with adult probation.

In the August 2011 this paper reported that the prison population could fall below 17,200 by January 2012. Today, it appears almost certain that the prison population will bottom out at around that figure by New Year's Day.

TABLE 1 –Prison Population Forecast

	Actual (*Avg Daily Count)	OPM 2011 Forecast	Diff. %
FEB '11	17,838*	-	-
MAR	17,702*	17,960	-1.4%
APR	17,628*	17,910	-1.6%
MAY	17,510*	17,792	-1.6%
JUN	17,520*	17,787	-1.5%
JUL	17,615*	17,786	-1.0%
AUG	17,666*	17,810	-0.8%
SEP	17,718*	17,950	-1.3%
OCT	17,774*	18,035	-1.4%
NOV	17,691*	17,931	-1.3%
DEC	17,412*	17,758	-1.9%
JAN '12	-	17,375	-
FEB	-	17,640	-

* Average Daily Count, first week of month

CHART 1 – Average Daily Inmate Count for the First Week of the Month
January 1, 2010 through February 1, 2012

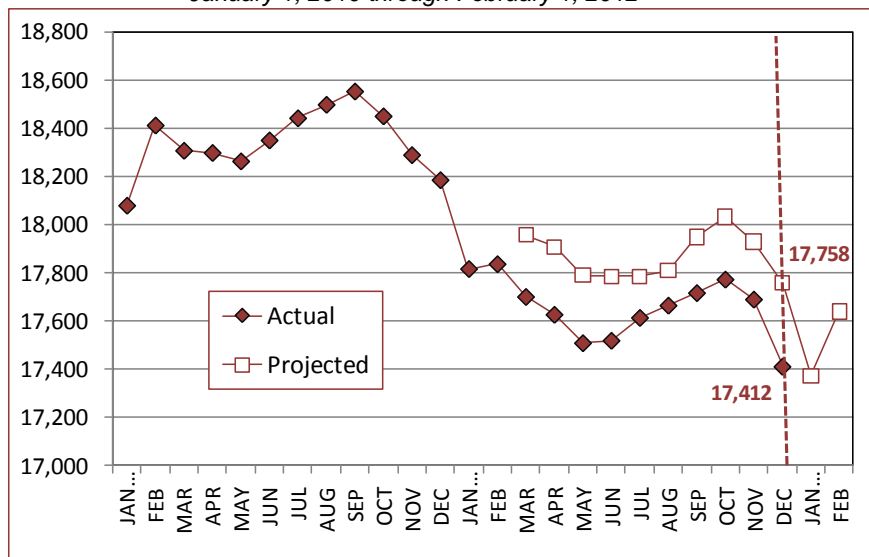
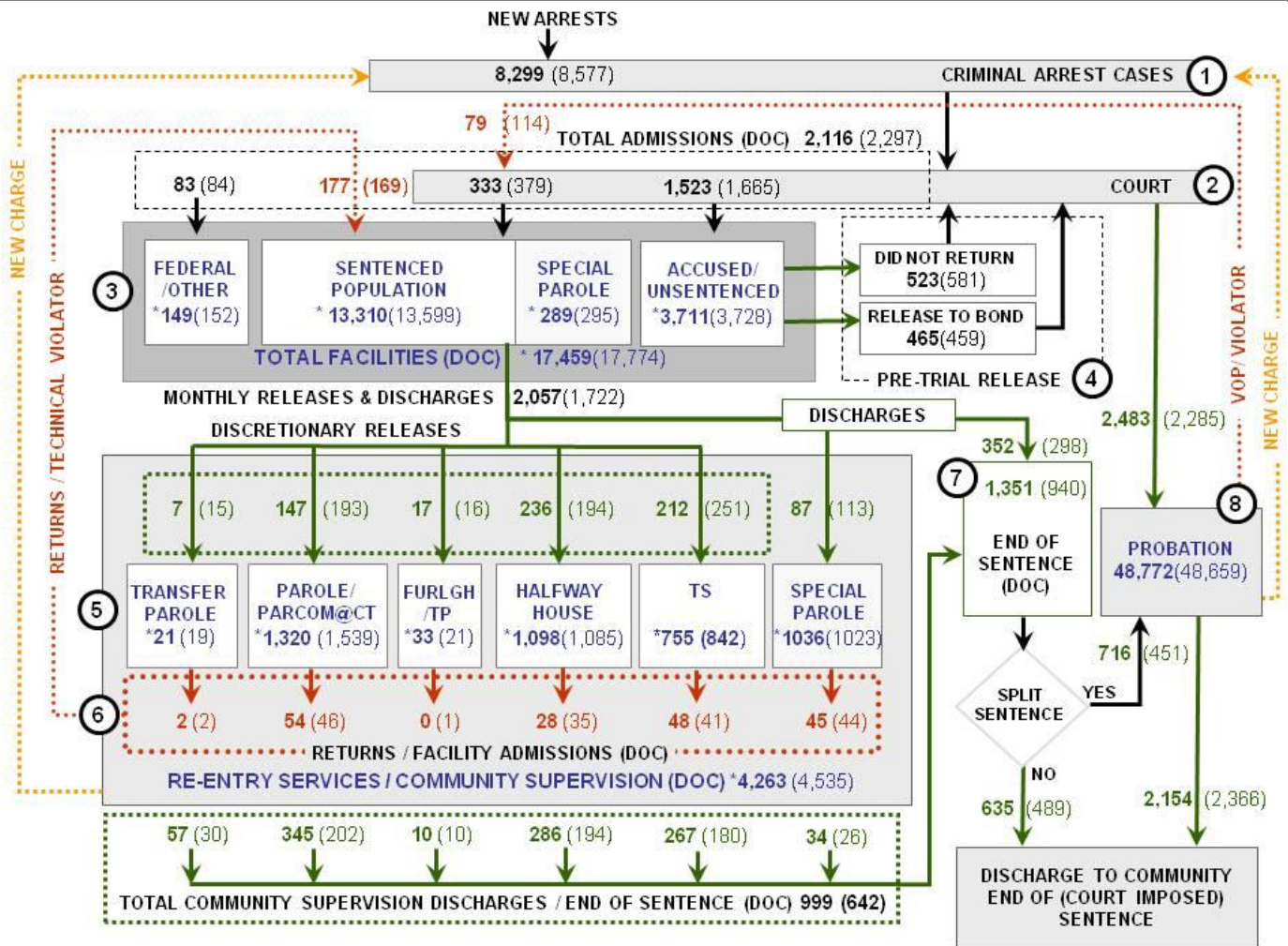


CHART 2 – Connecticut Criminal Justice System – Monthly Overview



Asterisks (*) indicate the population count on December 1, 2011.
 Parentheses enclose figures for the previous month.
 Sources: Arrest-Judicial/Court Operations; Court-Judicial/CSSD; Facility/Community Supervision-DOC

Unlike states that have county governments, the majority of agencies within Connecticut's criminal justice system are State agencies. The one exception is law enforcement, where there are over 90 local police departments and the Connecticut State Police.

- 1) Arrest:** An individual enters into the criminal justice system at the time of arrest.
- 2) Court:** At arraignment, judges review the charges filed against the accused and set a bail amount. Individuals who cannot meet bail conditions are incarcerated in DOC facilities to await trial. If the defendant is convicted, they may be sentenced to a range of sanctions including a fine, probation, or a term of incarceration.
- 3) DOC Facilities:** Total facility population at DOC contains the unsentenced population, which is awaiting trial, the sentenced population, inmates who have returned from special parole, and offenders charged in federal cases or non-state cases.
- 4) Pre-Trial Release:** Some defendants who are incarcerated pending the disposition of their cases may be eligible for a bond reduction or placement into pre-trial diversionary programs or treatment programs. These programs feature close coordination and cooperation between DOC, CSSD and the Department of Mental Health and Addiction Services (DMHAS).
- 5) Re-Entry Services:** Depending on several factors, an inmate may be eligible to complete a portion of his/her prison sentence under supervision of the DOC's Parole and Community Services Unit. Non-violent Inmates with sentences shorter than two years are eligible for Transitional Supervision after serving 50% of their sentences. Inmates serving sentences longer than two years may be eligible for parole.
- 6) Returns:** Offenders who violate the conditions of their community release may be returned to prison to complete the remainder of their sentences.
- 7) End of Sentence (EOS):** At the end of their sentences some offenders are required to complete a period of post-release supervision. Split-sentence offenders are supervised by the Judicial Branch's Office of Adult Probation. Offenders sentenced to special parole remain under DOC supervision.
- 8) Violation of Probation:** If an individual violates the terms of their probation, an arrest warrant must be issued, and the violator's case is returned to court.

TABLE 2 – DOC Population Counts, First of the Month

	2011	2011	2011	2010	% Change	
	Oct. 1st	Nov. 1st	Dec. 1st	Dec. 1st	Monthly	Annual
DOC Facility						
Federal/Other	149	152	149	145	-2.0%	2.8%
Sentenced	13,599	13,599	13,310	13,758	-2.2%	-3.3%
Special Parole	294	295	289	340	-2.1%	-15.0%
Pre-trial	3,720	3,728	3,711	3,929	-0.5%	-5.5%
Total	17,762	17,774	17,459	18,172	-1.8%	-3.9%
DOC Community						
Transfer Parole	21	19	21	33	9.5%	-36.4%
Parole/ Parcom Total	1,618	1,539	1,320	1,771	-16.6%	-25.5%
Parole	1,443	1,363	1,146	1,593	-18.9%	-28.1%
Parcom @ CT	175	176	174	178	-1.1%	-2.2%
Furlgh/Trans Place Tota	13	21	33	22	36.4%	50.0%
Furlough	6	13	23	8	43.5%	187.5%
Trans Placement	7	8	10	14	20.0%	-28.6%
Halfway House Total	1,117	1,085	1,098	1,080	1.2%	1.7%
Comm Release	881	842	863	885	2.4%	-2.5%
TS	19	19	18	17	-5.6%	5.9%
Parole	109	114	105	90	-8.6%	16.7%
Transfer Parole	1	0	1	3	-	-
Special Parole	107	110	111	85	0.9%	30.6%
TS Total	822	848	755	1,032	-12.3%	-26.8%
Special Parole	982	1,023	1,036	848	1.3%	22.2%
Total	4,573	4,535	4,263	4,786	-6.4%	-10.9%

TABLE 3 – DOC Admissions and Releases, Monthly Totals*

	2011	2011	2011	2010	% Change	
	Sept.	Oct.	Nov.	Nov.	Monthly	Annual
Admissions						
Federal/Other	108	84	83	102	-1.2%	-18.6%
Returns	233	169	177	191	4.7%	-7.3%
Transfer Parole	0	2	2	0	-	-
Parole	77	46	54	65	17.4%	-16.9%
Trans Plac/Furlough	1	1	0	2	-	-
HWH	37	35	28	30	-20.0%	-6.7%
TS	75	41	48	59	17.1%	-18.6%
Special Parole	43	44	45	35	2.3%	28.6%
New Sentence	386	379	333	342	-12.1%	-2.6%
VOP	121	114	79	98	-30.7%	-19.4%
Pre-trial	1,696	1,665	1,523	1604	-8.5%	-5.0%
Total	2,423	2,297	2,116	2,239	-7.9%	-5.5%
Releases						
Transfer Parole	11	15	7	29	-53.3%	-75.9%
Parole	193	193	147	154	-23.8%	-4.5%
Trans Plac/Furlough	10	16	17	12	6.3%	41.7%
HWH	213	194	236	186	21.6%	26.9%
TS	227	251	212	283	-15.5%	-25.1%
Special Parole	101	113	87	68	-23.0%	27.9%
End of Sentence	1,117	940	1,351	887	43.7%	52.3%
Total	1,872	1,722	2,057	1,619	19.5%	27.1%
Pre-trial Releases*						
Did not return from Court	592	581	523	577	-10.0%	-9.4%
Release to Bond	532	459	465	515	1.3%	-9.7%

*Monthly totals are measured by occurrence, not by individual.

Board of Pardons and Parole

TABLE 4A – Paroles Granted, New cases

	Hearings	Granted	Rate
SEP	225	180	80%
OCT	236	186	79%
NOV	199	157	79%

The Board also considered 72 parole revocation and rescission cases during November.

TABLE 4B – Other Parole Hearings

	Revocations		Rescissions	
	Granted	Denied	Granted	Denied
SEPT	67	27	20	12
OCT	40	21	20	15
NOV	36	21	11	4

Public Defender Services

Public Defender services are provided to "indigent" adults and juveniles at 37 field offices and by six specialized units around the state.

TABLE 5 – PD Cases, Appointed & Disposed

	Cases appointed		Cases disposed	
	GA	JD	GA	JD
AUG	6,462	255	4,205	150
SEPT	6,129	266	4,436	182
OCT	5,620	263	4,270	152

CSSD – Adult Probation

Court Support Services Division: Between October and November, the number of split sentence client starts increased from 451 to 716.

TABLE 6 – Monthly CSSD Direct Sentenced & Probationer Community Placements

	Community Based	Out-patient	Inpatient/Resident	Total
AUG	713	994	24	1,731
SEPT	760	868	26	1,654
OCT	741	904	35	1,680

Pre-trial Diversion and Supervision

TABLE 7 –Pre-trial and split sentence starts

	Pre-trial Case Starts	Bail Client Starts	Supv. Split Sentence Starts
SEPT	2,301	2,185	480
OCT	2,244	2,285	451
NOV	2,114	2,483	716

TABLE 8 – The Jail Re-interview Program

	Interviews	Releases	Releases
	2011	2011	2010
SEPT	1,377	807	694
OCT	1,307	751	797
NOV	1,091	691	726

Data Notes: Figures are based on operational data available at the time of this report. Data in subsequent issues may not agree.

CHART 3 – Total Facility Population
December 1, 2011 to December 7, 2011

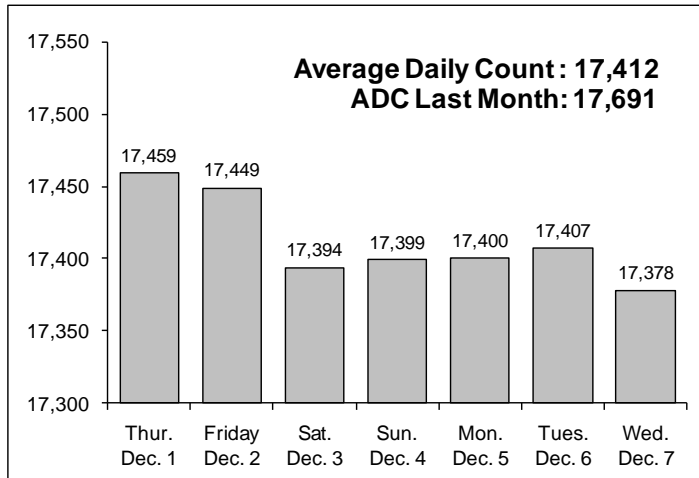


CHART 6 – Monthly DOC Admissions by Type
Oct. 2010 through Nov. 2011

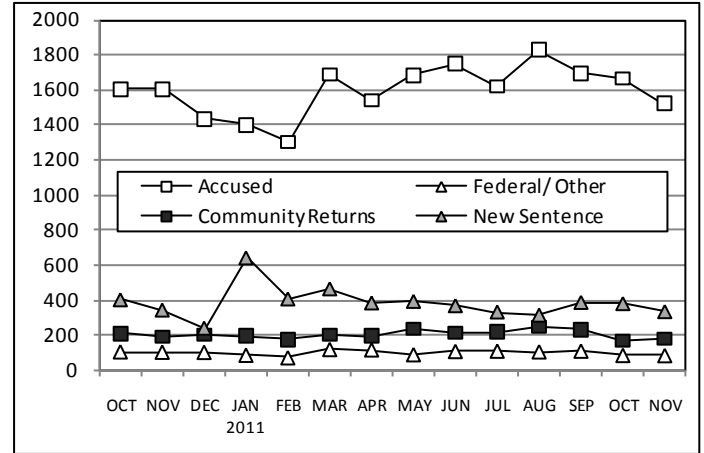


CHART 4 – Prison Population, first-of-month
January 1 through December 1

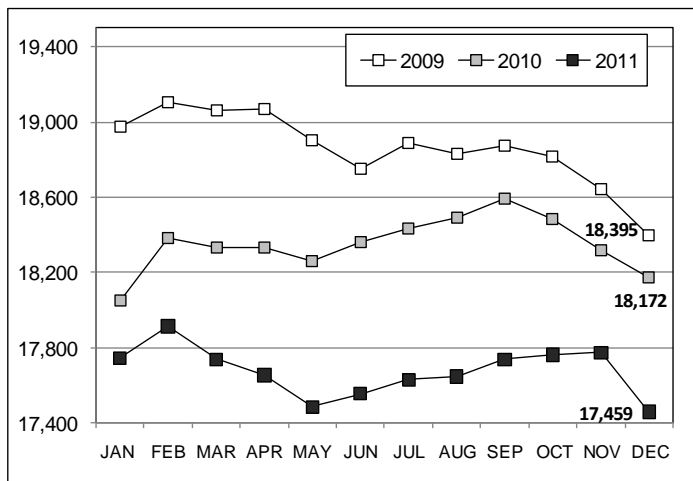


CHART 7 – Readmissions from Community Release
November 2011

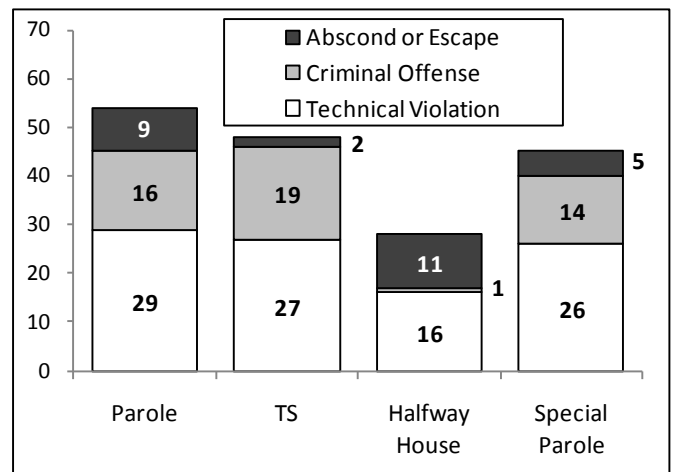


CHART 5 – Monthly, Statewide Criminal Arrests
2011 against the 3-year average

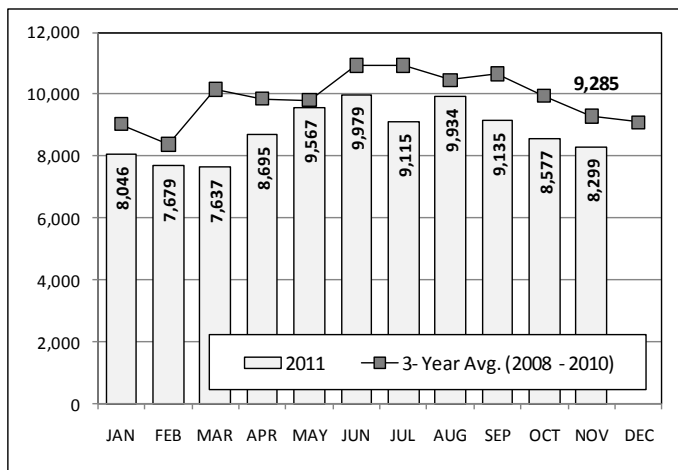
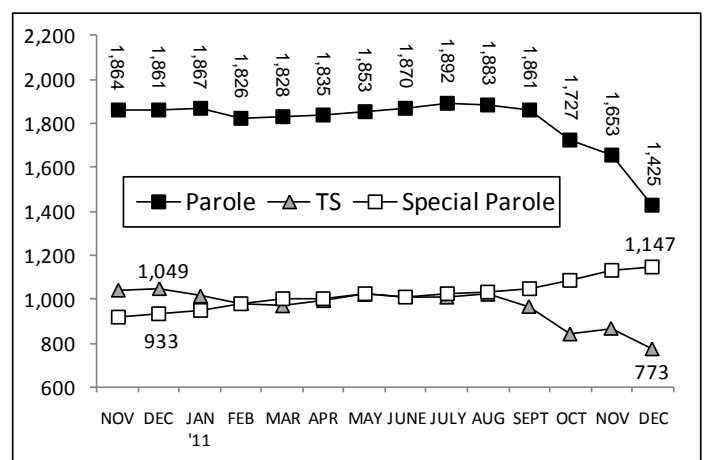


CHART 8 – Parole, TS and Special Parole, supervised cases
November 1, 2010 through December 1, 2011



Note: Data for all charts, with the exception of Chart 5, was supplied by CT DOC. Data for Chart 5 was provided by Court Operations. Data in Chart 8 includes all offenders under parole jurisdiction.