

Criminal Justice Policy & Planning Division Monthly Indicators Report



Monthly Indicators are available online at: www.ct.gov/OPM/CriminalJustice/Research

Highlights

- 17,655 inmates were in state prisons on April 1, 2011. This figure was the lowest April 1st inmate count since 2001.
- As *Monthly Indicators* goes to press, the legislature is considering allowing DOC Commissioner Arnone to commit some DWI and misdemeanor drug offenders to house arrest -with GPS monitoring and mandatory treatment- for a portion of their prison sentence. Also under consideration are plans to implement Risk Reduction Credits for inmates who participate in proven risk reduction programs. 42 states have such incentives.
- On April 1st, DOC Commissioner Leo Arnone announced that the state will close Gates Correctional Institution on June 1st. Gates, in Niantic, is a Level 2 facility that currently houses about male 700 offenders. According to the DOC, the prison system has adequate capacity to house inmates currently incarcerated at Gates at other facilities. Closing the prison could produce \$12.3 million in annual savings for the state.
- The pre-trial prison population could also fall significantly in the next year. CSSD is concentrating on efforts to direct low-risk people with low bonds away from prison. A soon-to-be implemented program featuring intensive probation supervision for pre-trial offenders could also reduce prison admits.

On March 28, 2011, Governor Malloy appointed Erika Tindill to head the state Board of Pardons and Paroles. Ms. Tindill will replace Robert Farr.

Prison Population Forecast

For the second month in a row, the actual prison count has fallen below OPM's projected count by over a percentage point. Most of the discrepancy stems from the fact that an anticipated rebound in the prison population, that typically occurs after January, never materialized.

Over the next year we should see a significant reduction in the prison population. As this issue goes to press, state officials and legislators are considering a variety of measures that could reduce the prison population by 1,000 prisoners or more over the coming year (See sidebar). The Criminal Justice Division at OPM and the CJPAC Research Workgroup will track the effect of these changes as they unfold.

At the present time, OPM believes that it would be premature to readjust the prison population forecast downward. We believe the forecast remains a reasonable benchmark to use as we track changes in the prison population over the next two quarters.

TABLE 1 –Prison Population Forecast

	Actual (*Avg Daily Count)	OPM 2011 Forecast	Diff. %
FEB '11	17,838*	-	-
MAR	17,702*	17,960	-1.4%
APR	17,628*	17,910	-1.6%
MAY	-	17,792	-
JUN	-	17,787	-
JUL	-	17,786	-
AUG	-	17,810	-
SEP	-	17,950	-
OCT	-	18,035	-
NOV	-	17,931	-
DEC	-	17,758	-
JAN '12	-	17,375	-
FEB	-	17,640	-

* Average Daily Count, first week of month

CHART 1 – Total DOC Facility Population, Actual and Projected
January 1, 2010 through February 1, 2012

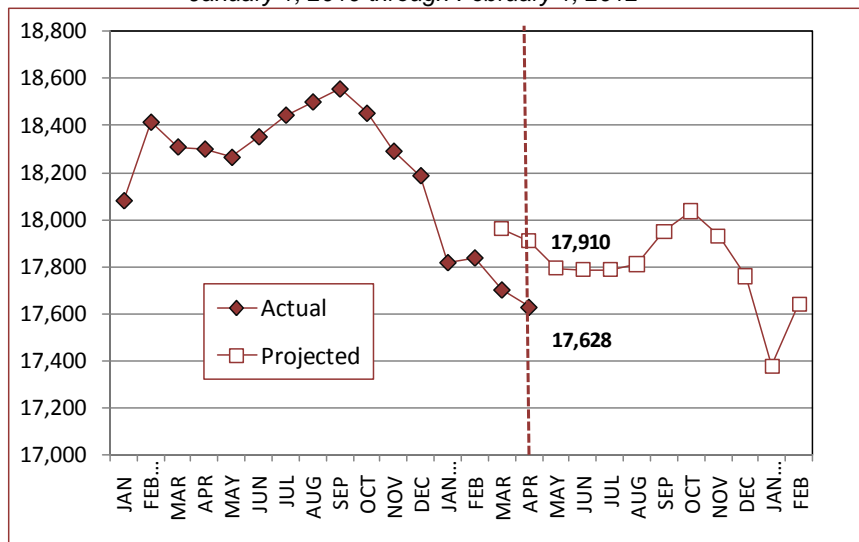
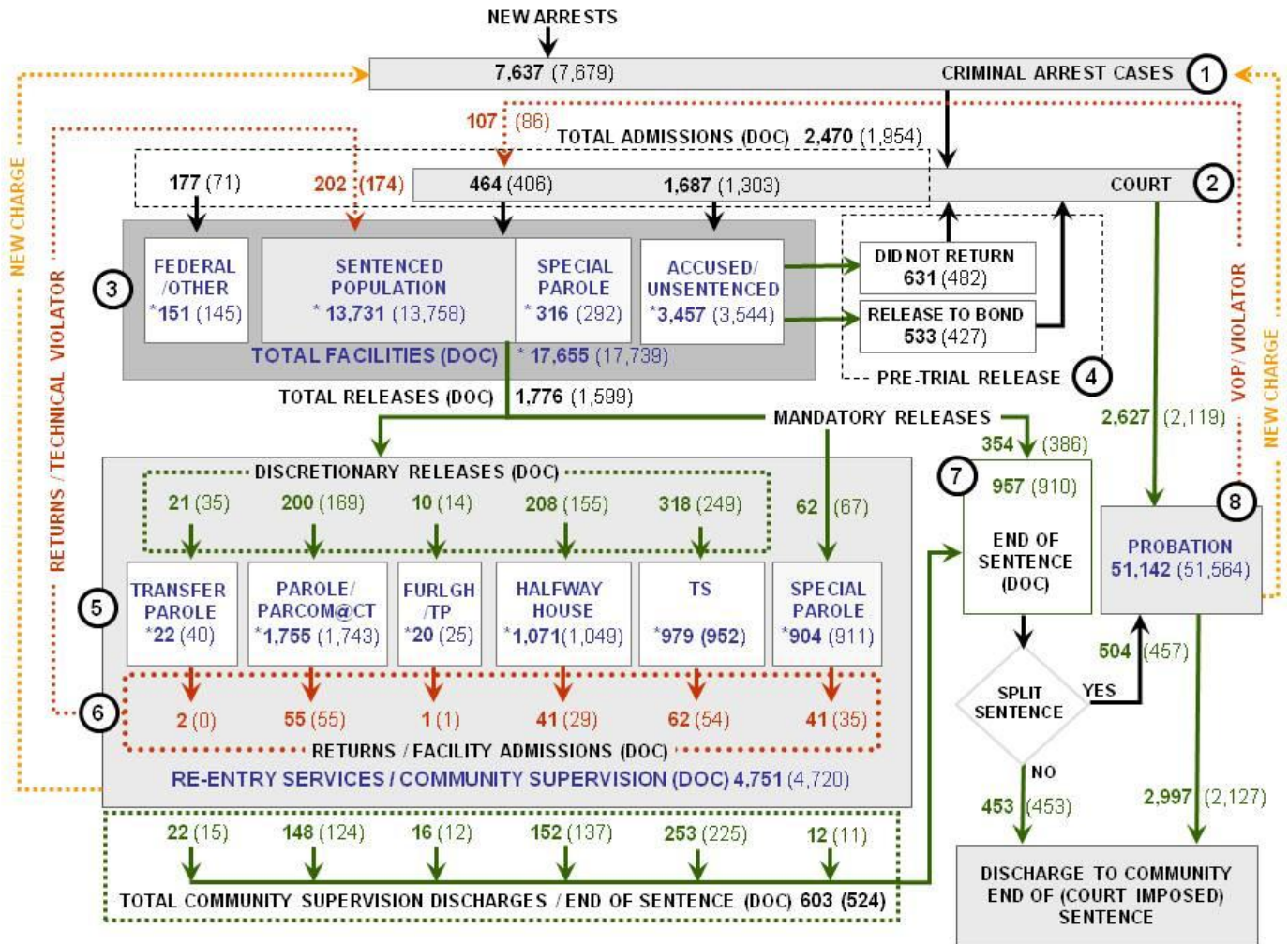


CHART 2 – Connecticut Criminal Justice System – Monthly Overview



Asterisks (*) indicate the population count on April 1, 2011.

Parentheses enclose figures for the previous month.

Sources: Arrest-Judicial/Court Operations; Court-Judicial/CSSD; Facility/Community Supervision-DOC

Unlike states that have county governments, the majority of agencies within Connecticut's criminal justice system are State agencies. The one exception is law enforcement, where there are over 90 local police departments and the Connecticut State Police.

- 1) Arrest:** An individual enters into the criminal justice system at the time of arrest.
- 2) Court:** At arraignment, judges review the charges filed against the accused and set a bail amount. Individuals who cannot meet bail conditions are incarcerated in DOC facilities to await trial. If the defendant is convicted, they may be sentenced to a range of sanctions including a fine, probation, or a term of incarceration.
- 3) DOC Facilities:** Total facility population at DOC contains the unsentenced population, which is awaiting trial, the sentenced population, inmates who have returned from special parole, and offenders charged in federal cases or non-state cases.
- 4) Pre-Trial Release:** Some defendants who are incarcerated pending the disposition of their cases may be eligible for a bond reduction or placement into pre-trial diversionary programs or treatment programs. These programs feature close coordination and cooperation between DOC, CSSD and the Department of Mental Health and Addiction Services (DMHAS).
- 5) Re-Entry Services:** Depending on several factors, an inmate may be eligible to complete a portion of his/her prison sentence under supervision of the DOC's Parole and Community Services Unit. Non-violent Inmates with sentences shorter than two years are eligible for Transitional Supervision after serving 50% of their sentences. Inmates serving sentences longer than two years may be eligible for parole.
- 6) Returns:** Offenders who violate the conditions of their community release may be returned to prison to complete the remainder of their sentences.
- 7) End of Sentence (EOS):** At the end of their sentences some offenders are required to complete a period of post-release supervision. Split-sentence offenders are supervised by the Judicial Branch's Office of Adult Probation. Offenders sentenced to special parole remain under DOC supervision.
- 8) Violation of Probation:** If an individual violates the terms of their probation, an arrest warrant must be issued, and the violator's case is returned to court.

TABLE 2 – DOC Population Counts, First of the Month

	2010	2011	2011	2010	% Change	
	Feb. 1st	Mar. 1st	Apr. 1st	Apr. 1st	Monthly	Annual
DOC Facility						
Federal/Other	141	145	151	142	4.0%	6.3%
Sentenced	13,795	13,758	13,731	14,109	-0.2%	-2.7%
Special Parole	300	292	316	324	7.6%	-2.5%
Accused/Unsentenced	3,679	3,544	3,457	3,756	-2.5%	-8.0%
Total	17,915	17,739	17,655	18,331	-0.5%	-3.7%
DOC Community						
Transfer Parole	32	40	22	61	-81.8%	-63.9%
Parole/ Parcom Total	1,745	1,743	1,755	1,780	0.7%	-1.4%
Parole	1,567	1,565	1,584	1,628	1.2%	-2.7%
Parcom @ CT	178	178	171	152	-4.1%	12.5%
Furlgh/Trans Place Total	27	25	20	65	-25.0%	-69.2%
Furlough	4	5	3	43	-66.7%	-93.0%
Trans Placement	23	20	17	22	-17.6%	-22.7%
Halfway House Total	1,072	1,049	1,071	1,091	2.1%	-1.8%
Comm Release	884	855	905	905	5.5%	0.0%
TS	16	18	21	21	14.3%	0.0%
Parole	81	85	98	98	13.3%	0.0%
Transfer Parole	3	0	1	0	-	-
Special Parole	88	91	100	67	9.0%	49.3%
TS Total	965	952	979	863	2.8%	13.4%
Special Parole	889	911	904	831	-0.8%	8.8%
Total	4,730	4,720	4,751	4,691	0.7%	1.3%

TABLE 3 – DOC Admissions and Releases, Monthly Totals

	2010	2010	2011	2010	% Change	
	Jan.	Feb.	Mar.	Mar.	Monthly	Annual
Admissions						
Federal/Other	85	71	117	112	64.8%	4.5%
Returns	192	174	202	232	16.1%	-12.9%
Transfer Parole	1	0	2	0	-	-
Parole	59	55	55	72	0.0%	-23.6%
Trans Plac/Furlough	2	1	1	4	-	-
HWH	36	29	41	35	41.4%	17.1%
TS	60	54	62	73	14.8%	-15.1%
Special Parole	34	35	41	48	17.1%	-14.6%
New Sentence	642	406	464	420	14.3%	10.5%
VOP	156	86	107	97	24.4%	10.3%
Accused	1,402	1,303	1,687	1968	29.5%	-14.3%
Total	2,321	1,954	2,470	2,732	26.4%	-9.6%
Releases						
Transfer Parole	28	35	21	38	-40.0%	-44.7%
Parole	150	169	200	194	18.3%	3.1%
Trans Plac/Furlough	13	14	10	54	-28.6%	-81.5%
HWH	202	155	208	248	34.2%	-16.1%
TS	246	249	318	229	27.7%	38.9%
Special Parole	81	67	62	67	-7.5%	-7.5%
End of Sentence	894	910	957	1037	5.2%	-7.7%
Total	1,614	1,599	1,776	1,867	11.1%	-4.9%
Pre-trial Releases*						
Did not return from Court	487	482	631	665	30.9%	-5.1%
Release to Bond	395	427	553	595	29.5%	-7.1%

*Monthly totals are measured by occurrence, not by individual.

Parole

Paroles and Parole hearings

The Board considered 275 parole cases at full panel hearings in March. In addition, the Board reviewed another 116 parole violation cases. Ninety-one (91) of these cases resulted in offenders being reparaoled; 64 cases had been for revocations; 27 were for rescissions.

TABLE 4A –Paroles Granted, Monthly

	Hearings	Granted	Rate
JAN '11	302	248	82%
FEB	240	188	78%
MAR	275	224	81%

Data Notes: Figures are based on the data available at the time of this report. Data in subsequent issues may not agree.

The Board of Pardons and Paroles schedules parole hearing dates up to 18 months before an offender's eligibility date. This should allow the Board to have a greater impact on offender programming while the offender remains incarcerated. It should also provide DOC with more time to develop appropriate reintegration plans for each parolee. If properly implemented, this change should reduce the number of offenders that are incarcerated beyond their parole eligibility dates.

TABLE 4B –Transfer Parole Cases

	Reviewed	Granted	Denied	Continued	Rate
JAN '11	307	61	218	28	20%
FEB	230	66	145	19	29%
MAR	261	67	174	20	26%

Probation

Court Support Services Division: total client caseload for March 2011: 51,142; February 2011 caseload: 51,564)

TABLE 5 – Monthly CSSD Direct Sentenced & Probationer Community Placements

	Community Based	Out-patient	Inpatient/ Resident	Total
DEC	1,068	999	16	2,083
JAN '11	1,303	858	19	2,180
FEB	1,286	849	27	2,162

Figures are based on the latest data available at publication time. Figures in subsequent issues may not agree with those published here.

Pre-trial Diversion and Supervision

TABLE 6 – Pre-trial Diversion & Supervision

	Pre-trial Bail Case Starts	Client Supv. Starts
JAN '11	2,389	2,294
FEB	2,109	2,119
MAR	2,673	16,248

CHART 3 – Snapshot Daily DOC Facility Population
March 1, 2011 to March 7, 2011

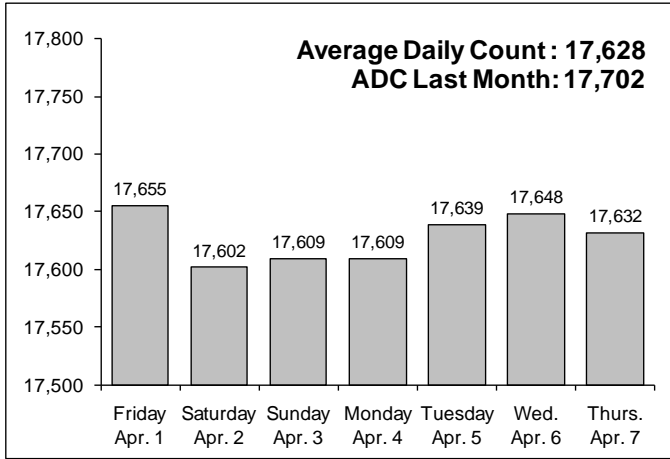


CHART 6 – Monthly DOC Admissions by Type
February 2010 through March 2011

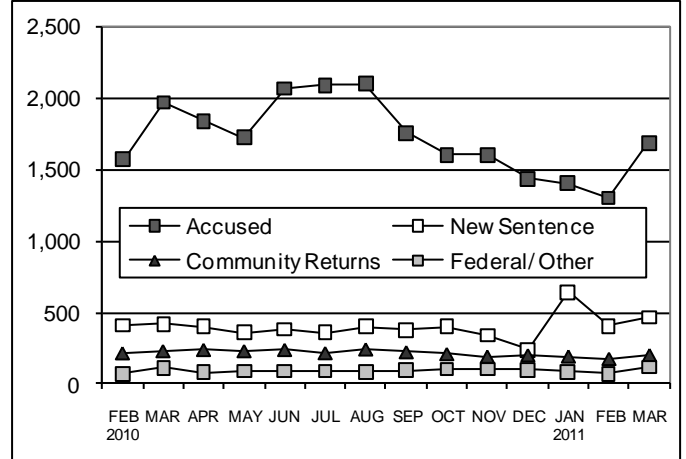


CHART 4 – Prison Population, first-of-month
January 1 through December 1

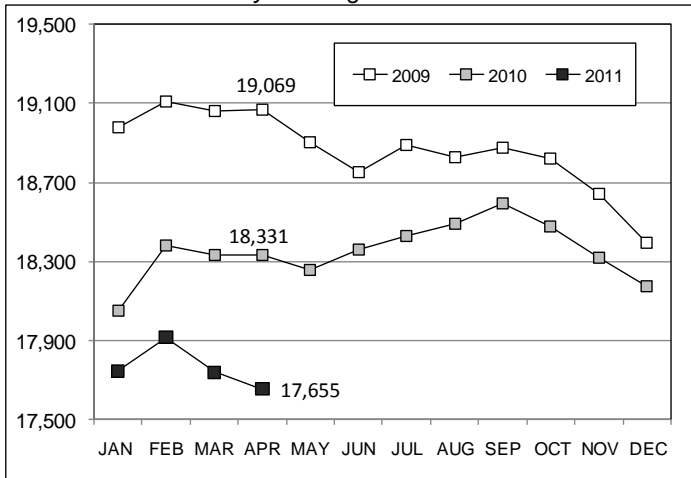


CHART 7 – Monthly Readmissions from Community Release
March 2011

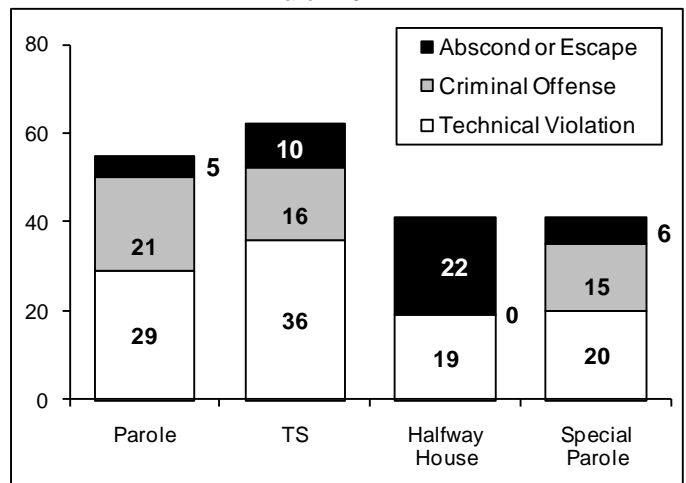


CHART 5 – Monthly Criminal Arrests
2011 against the 3-year average

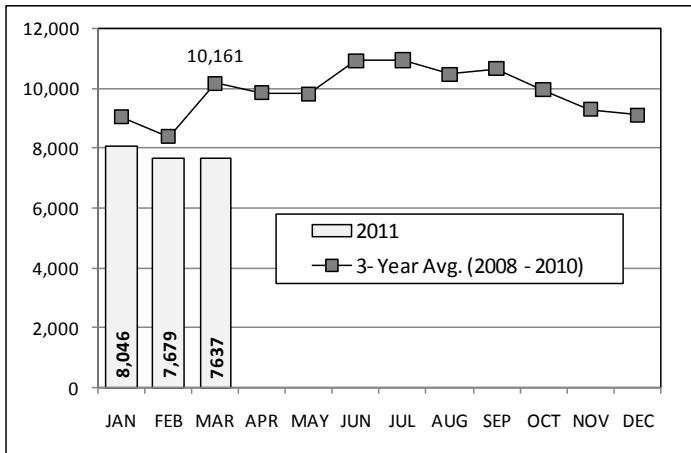
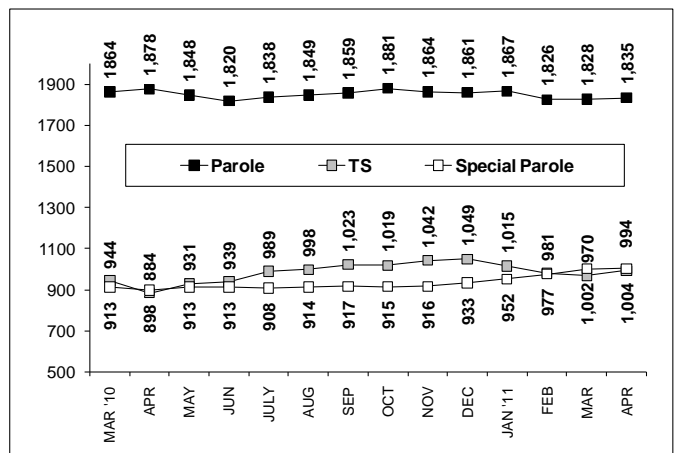


CHART 8 – Parole, TS and Special Parole, supervised cases
March 1, 2010 to April 1, 2011



Note: Data for all charts, with the exception of Chart 5, was supplied by CT DOC. Data for Chart 5 was provided by Court Operations. Data in Chart 8 includes all offenders under parole jurisdiction.