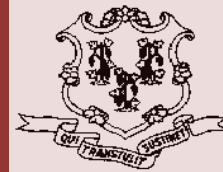


Criminal Justice Policy & Planning Division Monthly Indicators Report



Monthly Indicators are available online at: www.ct.gov/OPM/CriminalJustice/Research

Highlights

- On August 1, there were 17,648 inmates incarcerated in state prisons. This figure represents a slight increase from last month when 17,631 people were incarcerated.
- Bergin CI, in Mansfield, closed during August. During the previous year, Bergin typically housed 900 to 1,050 offenders. The DOC currently houses about 400 offenders at the Niantic Annex at units that were formally part of Gates CI.
- Unionized state employees will vote again in mid-August on a package of labor concessions negotiated with the Malloy administration. In June, a majority of state workers approved the contract package but they were unable to meet the threshold for ratification. The uncertainty surrounding the state's workforce has had a substantial impact on planning and operations at criminal justice agencies.
- Although the number of pre-trial prisoners has increased in recent months, the pre-trial prison population on August 1st was 11.4% lower than the same figure last year (See Table 2).
- The number of offenders on Special Parole status has grown from 1,227 last year to 1,364 this year. This represents an 11.2% increase.

This month Monthly Indicators has begun to publish the data provided by CSSD on the Jail Re-Interview Program See Table 8).

Prison Population Forecast

The state's prison population grew during July converging to within 0.8% of the figure projected by OPM in February. The overall prison population remains about 150 prisoners below the number projected in the forecast.

As expected we have seen the prison population grow as the summer has progressed. Although the rate of growth in the pre-trial population has caused some concern among DOC administrators, the number of monthly pre-trial prison admits is down significantly from last year. CSSD's Jail Reinterview Program (See Table 8) had become a critical component in the state's effort to appropriately reduce the number of incarcerated pre-trial offenders.

Anticipating the impact of changes like earned risk credits, OPM now believes that the prison population could fall below 17,200 before the end of the year.

TABLE 1 –Prison Population Forecast

	Actual (*Avg Daily Count)	OPM 2011 Forecast	Diff. %
FEB '11	17,838*	-	-
MAR	17,702*	17,960	-1.4%
APR	17,628*	17,910	-1.6%
MAY	17,510*	17,792	-1.6%
JUN	17,520*	17,787	-1.5%
JUL	17,615*	17,786	-1.0%
AUG	17,666*	17,810	-0.8%
SEP	-	17,950	-
OCT	-	18,035	-
NOV	-	17,931	-
DEC	-	17,758	-
JAN '12	-	17,375	-
FEB	-	17,640	-

* Average Daily Count, first week of month

CHART 1 – Total DOC Facility Population, Actual and Projected
January 1, 2010 through February 1, 2012

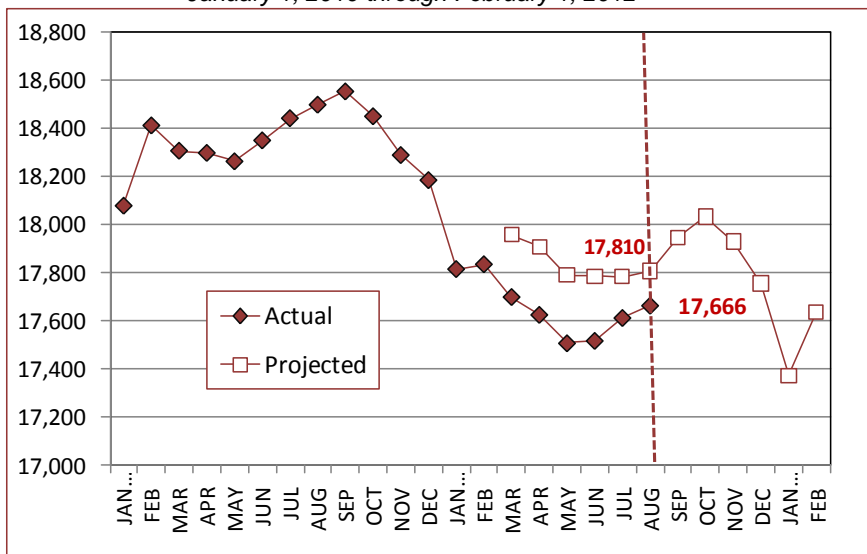
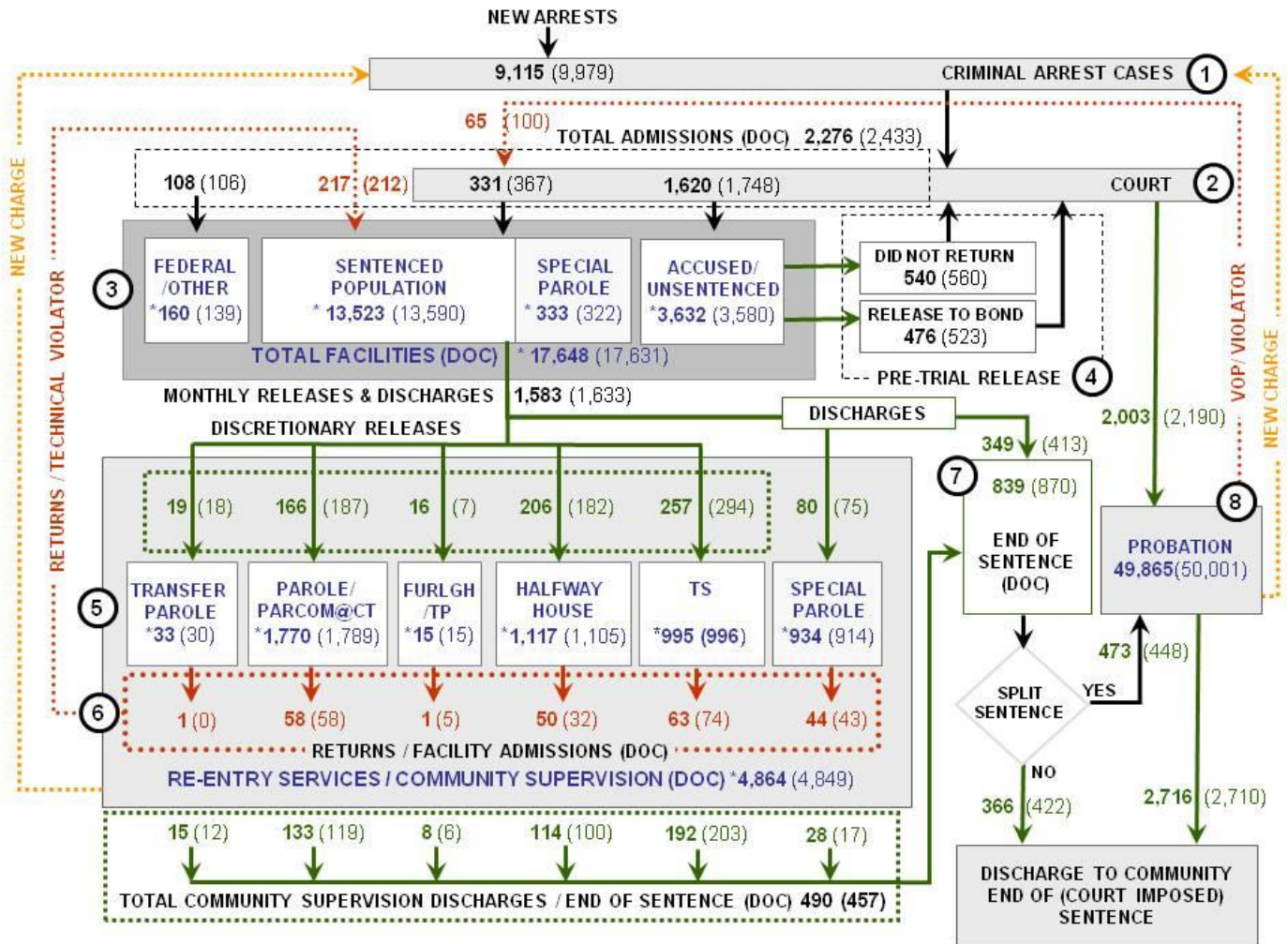


CHART 2 – Connecticut Criminal Justice System – Monthly Overview



Asterisks (*) indicate the population count on August 1, 2011.
 Parentheses enclose figures for the previous month.

Sources: Arrest-Judicial/Court Operations; Court-Judicial/CSSD; Facility/Community Supervision-DOC

Unlike states that have county governments, the majority of agencies within Connecticut's criminal justice system are State agencies. The one exception is law enforcement, where there are over 90 local police departments and the Connecticut State Police.

- 1) Arrest:** An individual enters into the criminal justice system at the time of arrest.
- 2) Court:** At arraignment, judges review the charges filed against the accused and set a bail amount. Individuals who cannot meet bail conditions are incarcerated in DOC facilities to await trial. If the defendant is convicted, they may be sentenced to a range of sanctions including a fine, probation, or a term of incarceration.
- 3) DOC Facilities:** Total facility population at DOC contains the unsentenced population, which is awaiting trial, the sentenced population, inmates who have returned from special parole, and offenders charged in federal cases or non-state cases.
- 4) Pre-Trial Release:** Some defendants who are incarcerated pending the disposition of their cases may be eligible for a bond reduction or placement into pre-trial diversionary programs or treatment programs. These programs feature close coordination and cooperation between DOC, CSSD and the Department of Mental Health and Addiction Services (DMHAS).
- 5) Re-Entry Services:** Depending on several factors, an inmate may be eligible to complete a portion of his/her prison sentence under supervision of the DOC's Parole and Community Services Unit. Non-violent Inmates with sentences shorter than two years are eligible for Transitional Supervision after serving 50% of their sentences. Inmates serving sentences longer than two years may be eligible for parole.
- 6) Returns:** Offenders who violate the conditions of their community release may be returned to prison to complete the remainder of their sentences.
- 7) End of Sentence (EOS):** At the end of their sentences some offenders are required to complete a period of post-release supervision. Split-sentence offenders are supervised by the Judicial Branch's Office of Adult Probation. Offenders sentenced to special parole remain under DOC supervision.
- 8) Violation of Probation:** If an individual violates the terms of their probation, an arrest warrant must be issued, and the violator's case is returned to court.

TABLE 2 – DOC Population Counts, First of the Month

	2010	2011	2011	2010	% Change	
	June 1	July 1	Aug. 1st	Aug. 1st	Monthly	Annual
DOC Facility						
Federal/Other	132	139	160	155	13.1%	3.2%
Sentenced	13,613	13,590	13,523	13,898	-0.5%	-2.7%
Special Parole	319	322	333	323	3.3%	3.1%
Accused/Unsentenced	3,491	3,580	3,632	4,114	1.4%	-11.7%
Total	17,555	17,631	17,648	18,490	0.1%	-4.6%
DOC Community						
Transfer Parole	30	30	33	43	9.1%	-23.3%
Parole/ Parcom Total	1,775	1,789	1,770	1,761	-1.1%	0.5%
Parole	1,599	1,613	1,594	1,599	-1.2%	-0.3%
Parcom @ CT	176	176	176	162	0.0%	8.6%
Furlgh/Trans Place Total	23	15	15	17	0.0%	-11.8%
Furlough	5	2	7	4	71.4%	75.0%
Trans Placement	18	13	8	13	-62.5%	-38.5%
Halfway House Total	1,092	1,105	1,117	1,101	1.1%	1.5%
Comm Release	880	878	889	919	1.2%	-3.3%
TS	10	14	18	16	22.2%	12.5%
Parole	95	103	113	88	8.8%	28.4%
Transfer Parole	2	0	0	1	-	-
Special Parole	105	109	97	77	-12.4%	26.0%
TS Total	1,003	996	995	982	-0.1%	1.3%
Special Parole	907	914	934	837	2.1%	11.6%
Total	4,830	4,849	4,864	4,741	0.3%	2.6%

TABLE 3 – DOC Admissions and Releases, Monthly Totals

	2010	2010	2011	2010	% Change	
	May	June	July	July	Monthly	Annual
Admissions						
Federal/Other	88	106	108	90	1.9%	20.0%
Returns	234	212	217	217	2.4%	0.0%
Transfer Parole	2	0	1	3	-	-
Parole	71	58	58	72	0.0%	-19.4%
Trans Plac/Furlough	0	5	1	0	-	-
HWH	26	32	50	38	56.3%	31.6%
TS	85	74	63	66	-14.9%	-4.5%
Special Parole	50	43	44	38	2.3%	15.8%
New Sentence	392	367	331	358	-9.8%	-7.5%
VOP	99	100	65	90	-35.0%	-27.8%
Accused	1,684	1,748	1,620	2091	-7.3%	-22.5%
Total	2,398	2,433	2,276	2,756	-6.5%	-17.4%
Releases						
Transfer Parole	26	18	19	23	5.6%	-17.4%
Parole	174	187	166	180	-11.2%	-7.8%
Trans Plac/Furlough	11	7	16	12	128.6%	33.3%
HWH	228	182	206	229	13.2%	-10.0%
TS	268	294	257	292	-12.6%	-12.0%
Special Parole	59	75	80	61	6.7%	31.1%
End of Sentence	889	870	839	948	-3.6%	-11.5%
Total	1,655	1,633	1,583	1,745	-3.1%	-9.3%
Pre-trial Releases*						
Did not return from Court	570	560	540	653	-3.6%	-17.3%
Release to Bond	459	523	476	703	-9.0%	-32.3%

*Monthly totals are measured by occurrence, not by individual.

Parole

Paroles and Parole hearings

The Board considered 197 new parole cases at full panel hearings in July. In addition, another 122 parole violation cases were reviewed. Ninety-one (91) of these cases resulted in offenders being reparaoled. Out of 91, 67 cases had been for parole revocations; 24 were for rescissions.

TABLE 4 – Paroles Granted, Monthly

	Hearings	Granted	Rate
MAY	236	198	84%
JUN	198	160	81%
JUL	197	149	76%

The Board did not consider any cases for Transfer Parole this month.

Data on transfer paroles will be published once the Board completes its program evaluation.

Public Defender Services

Public Defender services are provided to "indigent" adults and juveniles at 37 field offices and by 6 specialized units around the state.

TABLE 5 – PD Cases, Appointed & Disposed

	Cases appointed		Cases disposed	
	GA	JD	GA	JD
APR	5,081	211	4,450	202
MAY	5,444	272	4,231	148
JUN	5,725	207	4,011	181

Data Notes: Figures are based on the data available at the time of this report. Data in subsequent issues may not agree.

CSSD – Adult Probation

Court Support Services Division: total client caseload for July 2011: 49,865. In June, the caseload was 50,001.

TABLE 6 – Monthly CSSD Direct Sentenced & Probationer Community Placements

	Community Based	Out-patient	Inpatient/Resident	Total
APR	1,296	953	22	2,271
MAY	987	969	22	1,982
JUN	1,475	974	38	2,487

Pre-trial Diversion and Supervision

TABLE 7 – Pre-trial Diversion & Supervision

	Pre-trial Bail Client Supv.	
	Case Starts	Starts
MAY	2,516	2,251
JUNE	2,418	2,190
JULY	2,365	2,003

TABLE 8 – The Jail Re-interview Program

	Interviews	Releases	Releases
	2011	2011	2010
MAY	1,253	719	705
JUNE	1,425	725	742
JULY	1,335	713	722

Data Notes: Figures are based on the data available at the time of this report. Data in subsequent issues may not agree.

CHART 3 – Daily Facility Population
August 1, 2011 to August 7, 2011

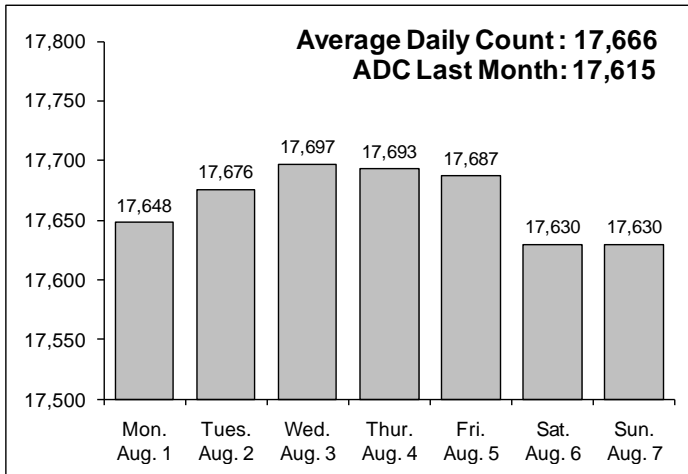


CHART 6 – Monthly DOC Admissions by Type
June 2010 through July 2011

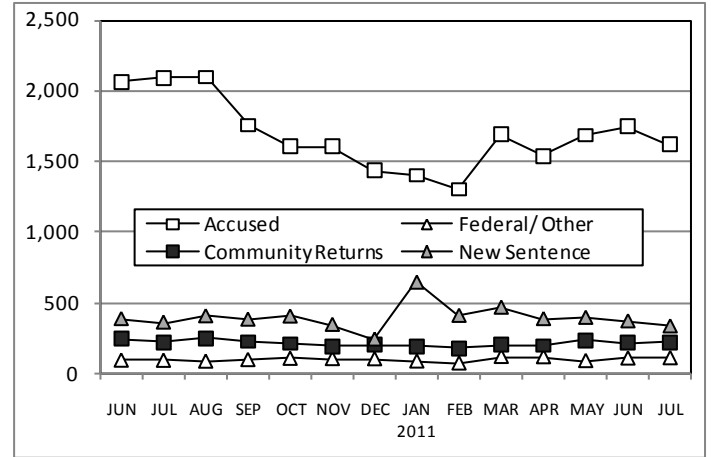


CHART 4 – Prison Population, first-of-month
January 1 through December 1

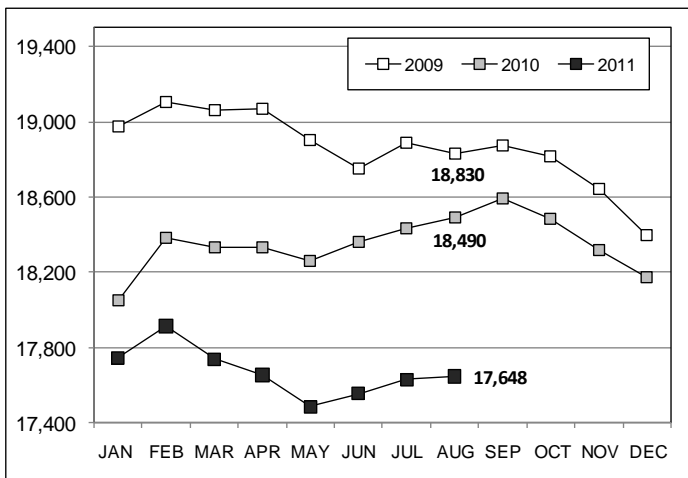


CHART 7 – Readmissions from Community Release
July 2011

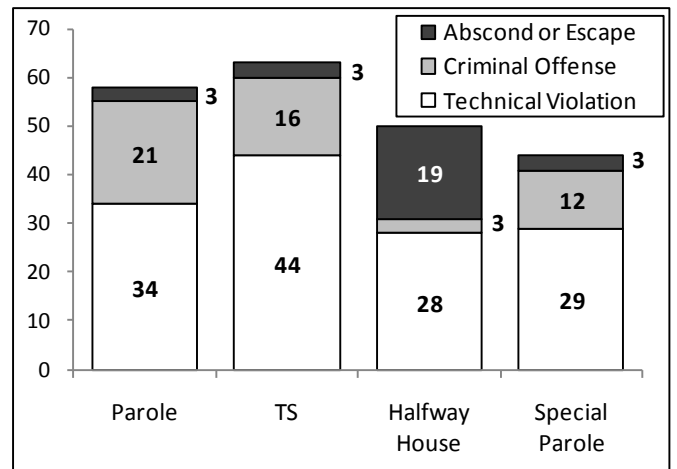


CHART 5 – Monthly, Statewide Criminal Arrests
2011 against the 3-year average

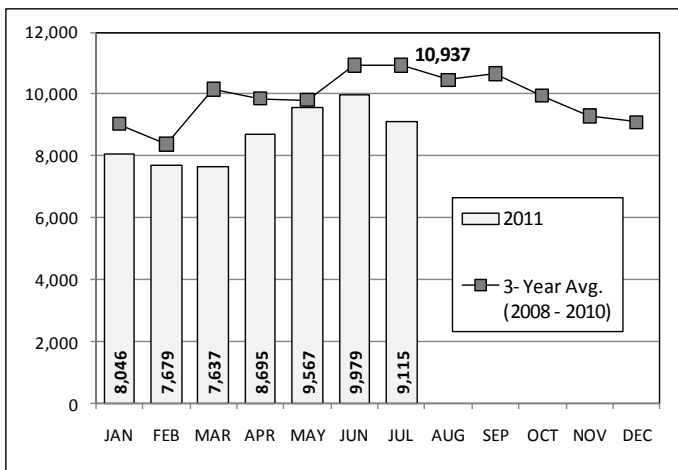
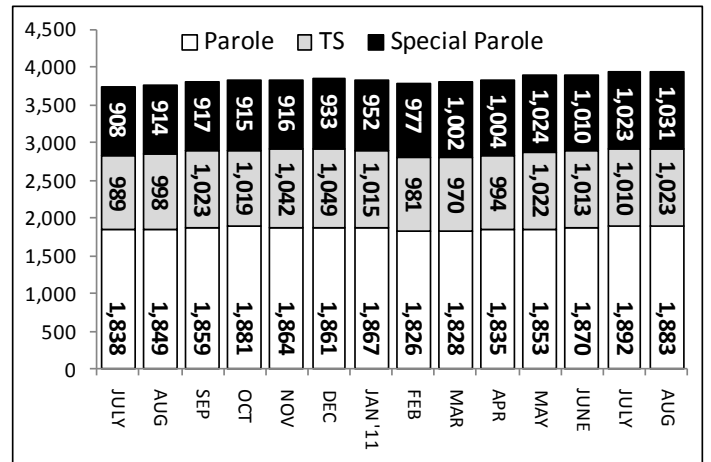


CHART 8 – Parole, TS and Special Parole, supervised cases
July 1, 2010 to August 1, 2011



Note: Data for all charts, with the exception of Chart 5, was supplied by CT DOC. Data for Chart 5 was provided by Court Operations. Data in Chart 8 includes all offenders under parole jurisdiction.