

Criminal Justice Policy & Planning Division Monthly Indicators Report



Monthly Indicators are available online at: www.ct.gov/OPM/CriminalJustice/Research

Highlights

- The prison population increased by 103 inmates between August 1st and September 1st. The count on the first of this month stood at 18,593; last month it was 18,490.
- Despite four months of growth, the prison population remains significantly below the level of a year ago. On Sept. 1st, 2009, 18,873 people were incarcerated in Connecticut prisons. On Sept. 1st, 2008, the state prison population was 19,552 (See Chart 4).
- Recent increases in the prison population have been driven by sustained growth in the number of unsentenced prisoners awaiting trial (See Chart 5). While the number of accused prisoners has risen, the state's sentenced population has been declining since May. On June 1st 2010, there were 14,155 sentenced prisoners. By September 1st, that number had fallen to 13,855.
- Since July 2009, when the DOC implemented new contracts for its network of community based beds, the number of special parolees in halfway house beds has increased by almost 80%. At the same time the number of TS offenders in contracted beds declined by 82% (See Table 2).

CJPPD recently published a fact sheet on recidivism among weapons offenders. The report is available on-line at www.ct.gov/opm/cjppd and following the link to the Criminal Justice Policy Advisory Commission (CJPAC) meetings, agendas and minutes.

Prison Population Forecast

The state's prison population increased again last month, making August the fourth consecutive month in which the prison population has grown.

Although the prison population in recent months has outpaced OPM's February forecast, the discrepancy between the OPM estimate and the inmate count closed significantly this month, from 1.7% to 1.2%. The reason: OPM's model projected that the prison population would experience moderate gains during August and September.

TABLE 1 –Prison Population Forecast

	Actual (*Avg Daily Count)	OPM 2010 Forecast	Difference
FEB '10	18,414*	-	-0.1%
MAR	18,309*	18,332	0.12%
APR	18,300*	18,281	-0.10%
MAY	18,265*	18,161	-0.57%
JUN	18,352*	18,156	-1.07%
JUL	18,444*	18,155	-1.6%
AUG	18,500*	18,180	-1.7%
SEP	18,555*	18,323	-1.2%
OCT	-	18,411	
NOV	-	18,305	
DEC	-	18,129	
JAN '11	-	17,738	
FEB	-	18,009	

* Average Daily Count, first week of month

Between May 1st and Sept. 1st, the accused prison population grew by 15%, or 543 inmates. This occurred despite the facts that statewide criminal arrests and prison admittances of accused offenders did not increase, and there was no trend evidence of higher average bonds. After discussions between CJPAC partner agencies, it appears that the growth in the prison population resulted from a gradual reduction in the volume of prisoners released through the alternative to incarceration network. Accordingly, CSSD and DOC are redoubling their efforts in this area and OPM projects that the prison population should return to expected levels within two months.

CHART 1 – Total DOC Facility Population, Actual and Projected
January 1, 2009 through February 1, 2011

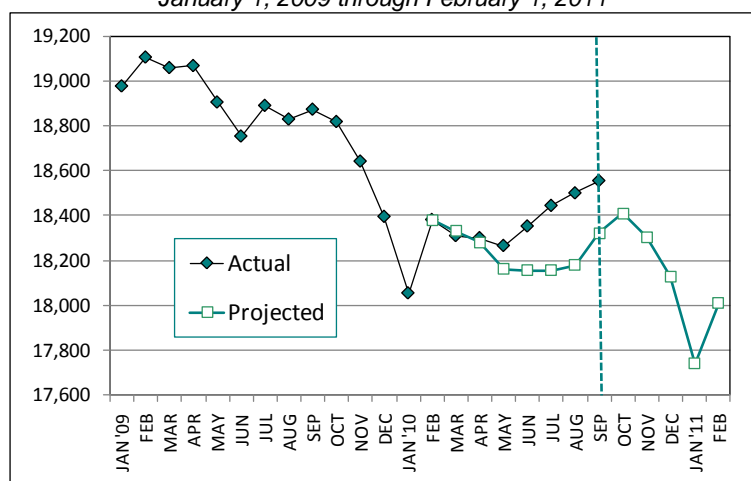
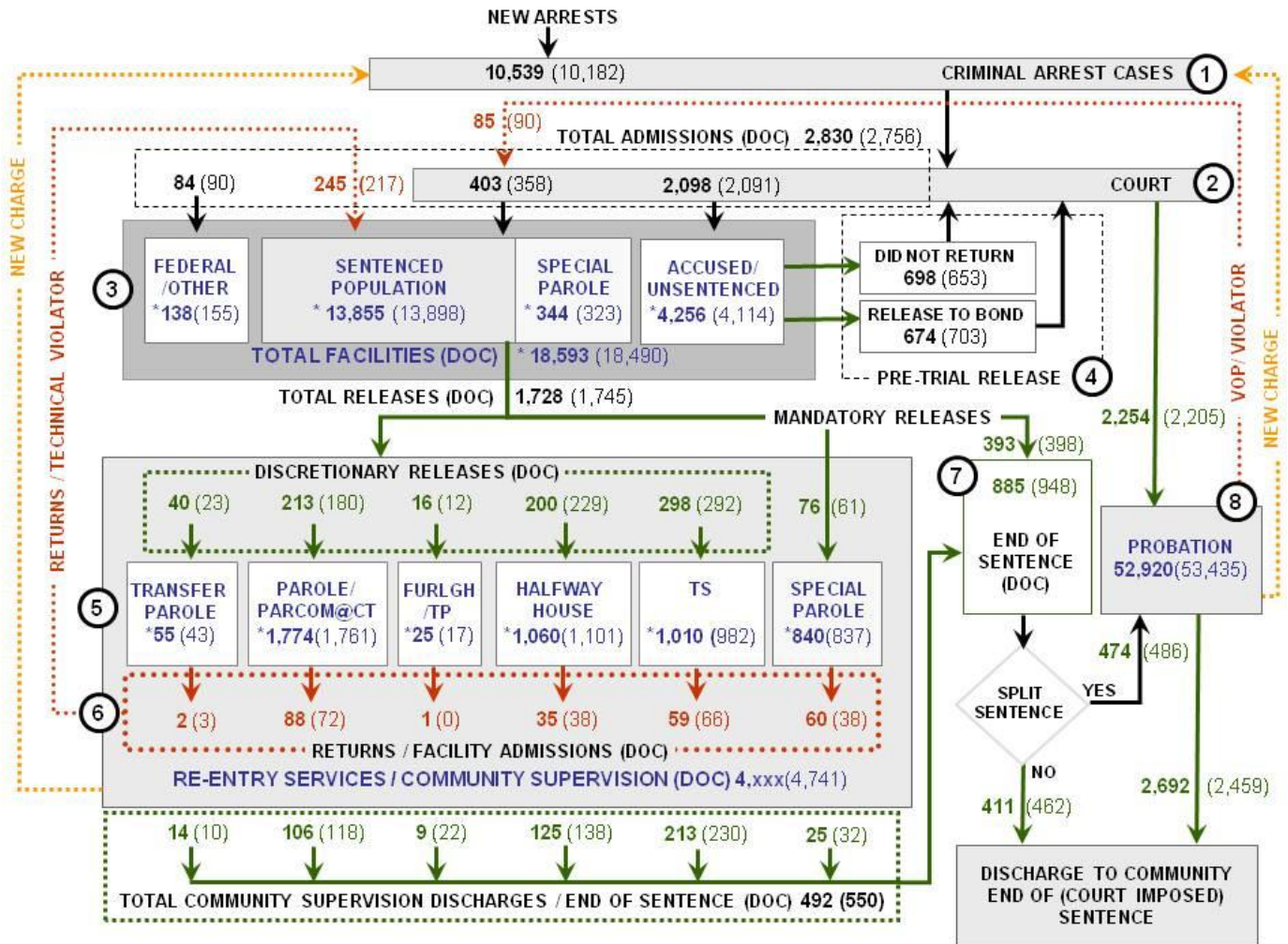


CHART 2 – Connecticut Criminal Justice System – Monthly Overview



Asterisks (*) indicate the population count on September 1, 2010.
 Parentheses enclose figures for the previous month.

Sources: Arrest-Judicial/Court Operations; Court-Judicial/CSSD; Facility/Community Supervision-DOC

Unlike states that have county governments, the majority of agencies within Connecticut's criminal justice system are State agencies. The one exception is law enforcement, where there are over 90 local police departments and the Connecticut State Police.

- 1) Arrest:** An individual enters into the criminal justice system at the time of arrest.
- 2) Court:** At arraignment, judges review the charges filed against the accused and set a bail amount. Individuals who cannot meet bail conditions are incarcerated in DOC facilities to await trial. If the defendant is convicted, they may be sentenced to a range of sanctions including a fine, probation, or a term of incarceration.
- 3) DOC Facilities:** Total facility population at DOC contains the unsentenced population, which is awaiting trial, the sentenced population, inmates who have returned from special parole, and offenders charged in federal cases or non-state cases.
- 4) Pre-Trial Release:** Some defendants who are incarcerated pending the disposition of their cases may be eligible for a bond reduction or placement into pre-trial diversionary programs or treatment programs. These programs feature close coordination and cooperation between DOC, CSSD and the Department of Mental Health and Addiction Services (DMHAS).
- 5) Re-Entry Services:** Depending on several factors, an inmate may be eligible to complete a portion of his/her prison sentence under supervision of the DOC's Parole and Community Services Unit. Non-violent Inmates with sentences shorter than two years are eligible for Transitional Supervision after serving 50% of their sentences. Inmates serving sentences longer than two years may be eligible for parole.
- 6) Returns:** Offenders who violate the conditions of their community release may be returned to prison to complete the remainder of their sentences.
- 7) End of Sentence (EOS):** At the end of their sentences some offenders are required to complete a period of post-release supervision. Split-sentence offenders are supervised by the Judicial Branch's Office of Adult Probation. Offenders sentenced to special parole remain under DOC supervision.
- 8) Violation of Probation:** If an individual violates the terms of their probation, an arrest warrant must be issued, and the violator's case is returned to court.

TABLE 2 – DOC Population Counts, First of the Month

	2010	2010	2010	2009	% Change	
	Jul. 1st	Aug. 1st	Sept. 1st	Sept. 1st	Monthly	Annual
DOC Facility						
Federal/Other	145	155	138	161	-12.3%	-14.3%
Sentenced	14,035	13,898	13,855	14,441	-0.3%	-4.1%
Special Parole	320	323	344	303	6.1%	13.5%
Accused/Unsentenced	3,931	4,114	4,256	3,969	3.3%	7.2%
Total	18,431	18,490	18,593	18,874	0.6%	-1.5%
DOC Community						
Transfer Parole	53	43	55	43	21.8%	27.9%
Parole/ Parcom Total	1,748	1,761	1,774	1,703	0.7%	4.2%
Parole	1,588	1,599	1,603	1,536	0.2%	4.4%
Parcom @ CT	160	162	171	167	5.3%	2.4%
Furlgh/Trans Place Total	22	17	25	35	32.0%	-28.6%
Furlough	6	4	6	0	33.3%	-
Trans Placement	16	13	19	35	31.6%	-45.7%
Halfway House Total	1,065	1,101	1,060	1,046	-3.9%	1.3%
Comm Release	880	919	883	875	-4.1%	0.9%
TS	19	16	13	71	-23.1%	-81.7%
Parole	90	88	85	57	-3.5%	49.1%
Transfer Parole	2	1	2	0	-	-
Special Parole	74	77	77	43	0.0%	79.1%
TS Total	970	982	1,010	1,019	2.8%	-0.9%
Special Parole	834	837	840	838	0.4%	0.2%
Total	4,692	4,741	4,764	4,684	0.5%	1.7%

TABLE 3 – DOC Admissions and Releases, Monthly Totals

	2010	2010	2010	2009	% Change	
	June	July	August	August	Monthly	Annual
Admissions						
Federal/Other	91	90	84	124	-6.7%	-32.3%
Returns	241	217	245	236	12.9%	3.8%
Transfer Parole	1	3	2	0	-	-
Parole	80	72	88	75	22.2%	17.3%
Trans Plac/Furlough	2	0	1	1	-	-
HWH	40	38	35	38	-7.9%	-7.9%
TS	68	66	59	86	-10.6%	-31.4%
Special Parole	50	38	60	36	57.9%	66.7%
New Sentence	383	358	403	390	12.6%	3.3%
VOP	94	90	85	118	-5.6%	-28.0%
Accused	2,065	2,091	2,098	2,066	0.3%	1.5%
Total	2,780	2,756	2,830	2,816	2.7%	0.5%
Releases						
Transfer Parole	39	23	40	29	73.9%	37.9%
Parole	212	180	213	218	18.3%	-2.3%
Trans Plac/Furlough	7	12	16	10	33.3%	60.0%
HWH	225	229	200	191	-12.7%	4.7%
TS	336	292	298	312	2.1%	-4.5%
Special Parole	53	61	76	55	24.6%	38.2%
End of Sentence	931	948	885	826	-6.6%	7.1%
Total	1,803	1,745	1,728	1,641	-1.0%	5.3%
Pre-trial Releases*						
Did not return from Court	623	653	698	717	6.9%	-2.6%
Release to Bond	654	703	674	667	-4.1%	1.0%

*Measured by occurrence, not by individual.

Parole

Paroles and Parole hearings

The Board considered 252 parole cases at full panel in August. In addition, the Board considered an additional 105 parole violation cases. Seventy-eight (78) of these cases resulted in offenders being reparaoled; 64 cases had been revocations; 14 had been rescissions.

TABLE 4A –Paroles Granted, Monthly

	Hearings	Granted	Rate
JUN	296	230	78%
JULY	252	196	78%
AUG	283	231	82%

Data Notes: Figures are based on the data available at the time of this report. Data in subsequent issues may not agree.

The Board of Pardons and Paroles schedules parole hearing dates up to 18 months before an offender's eligibility date. This should allow the Board to have a greater impact on offender programming while the offender remains incarcerated. It should also provide DOC with more time to develop appropriate reintegration plans for each parolee. If properly implemented, this change should reduce the number of offenders that are incarcerated beyond their parole eligibility dates.

TABLE 4B –Transfer Parole Activity

	Reviewed	Granted	Denied	Continued	Rate
MAY	212	66	115	31	31%
JUN	318	82	208	28	26%
JULY	269	80	160	29	30%
AUG	274	77	180	17	28%

Probation

Court Support Services Division caseload for August 2010: 52,920 (July 2010: 53,435)

TABLE 5 – Monthly CSSD Direct Sentenced & Probationer Community Placements

	Community Based	Out-patient	Inpatient/ Resident	Total
MAY	1,377	845	30	2,252
JUN	1,491	965	30	2,252
JUL	1,509	911	24	2,444

Data Notes: Figures are based on the latest data available at publication time. Figures in subsequent issues may not agree with those published here.

Pre-trial Diversion and Supervision

TABLE 6 – Pre-trial Diversion & Supervision

	Pre-trial Bail Case Starts	Client Supv. Starts
JUNE	2,854	1,981
JULY	2,797	2,205
AUG	2,774	2,254

CHART 3 – Snapshot Daily DOC Facility Population
September 1, 2010 to September 7, 2010

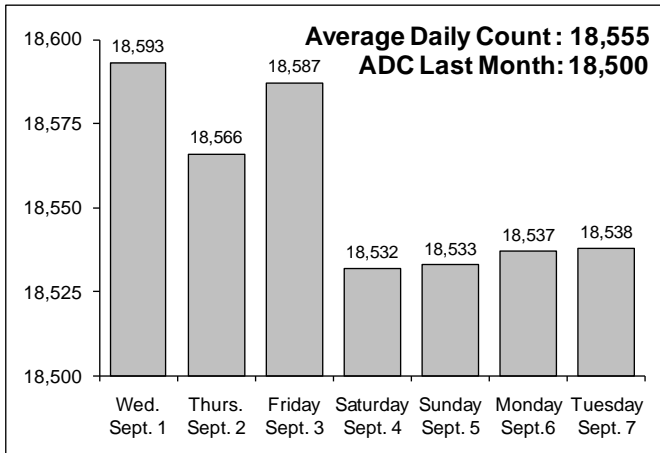


CHART 6 – Monthly DOC Admissions by Type
July 2009 to August 2010

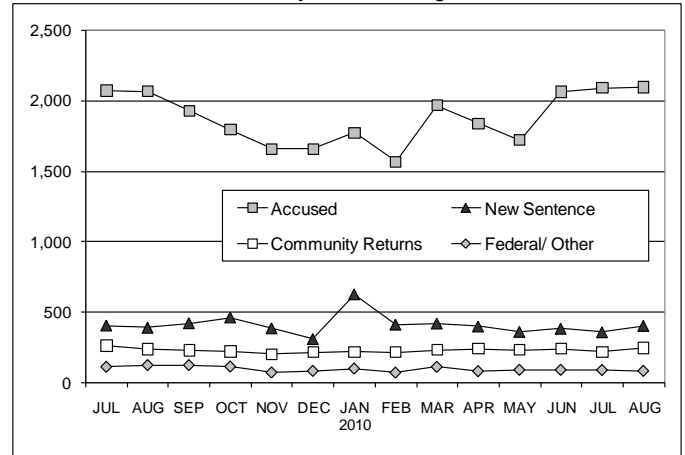


CHART 4 – Prison Population, first-of-month
January 1 through December 1, Calendar Year

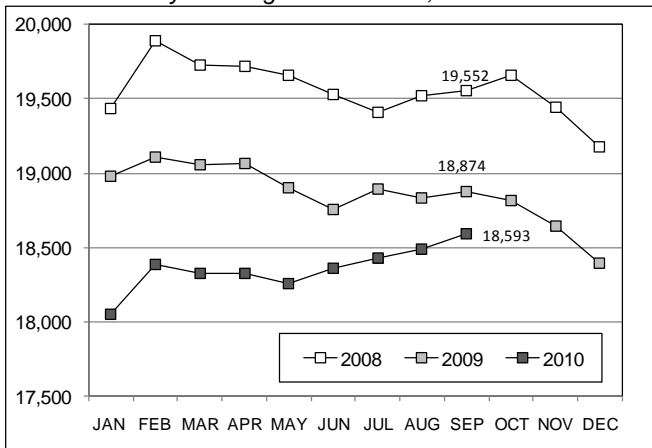


CHART 7 – Monthly Readmissions from Community Release
August 2010

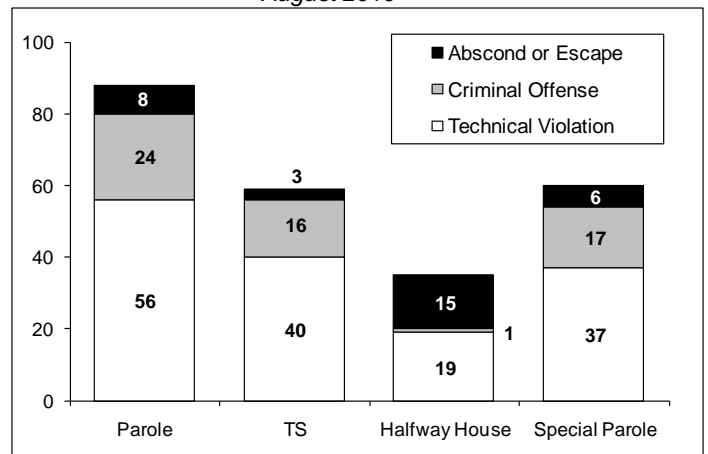


CHART 5 – Unsentenced prison population
2010 to date v. 2009 and 2005

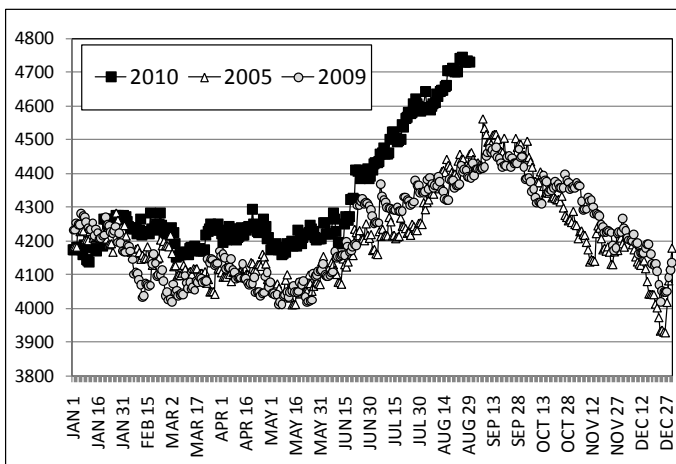
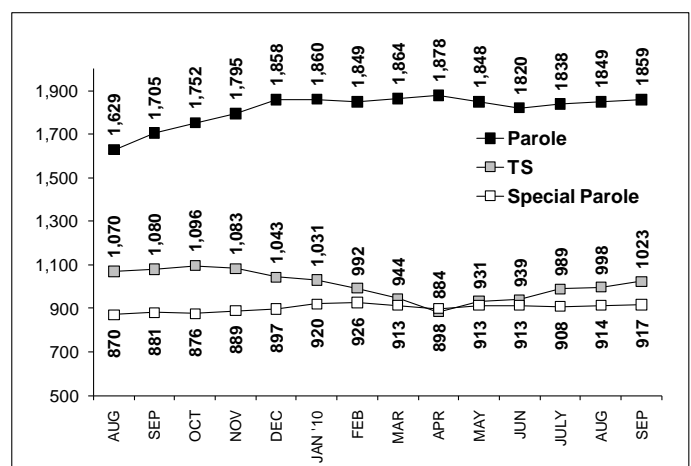


CHART 8 – Parole, TS and Special Parole, supervised cases
August 1, 2009 to September 1, 2010



Note: Data for all charts was supplied by CT DOC. Data in Chart 8 includes all offenders under parole jurisdiction.