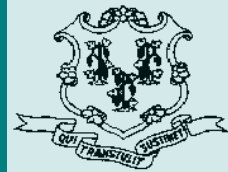


Criminal Justice Policy & Planning Division Monthly Indicators Report



RESEARCH, ANALYSIS & EVALUATION — WWW.CT.GOV/OPM/CriminalJustice/Research

Highlights

- In a typical year, the prison population dips by several hundred in December and rebounds during January. Between New Year's Day and February 1, 2010, the prison system added 330 inmates, growing from 18,053 to 18,383. Over the last decade, the January rebound has exceeded 330 six times.
- The number of sentenced offenders admitted to prison between December and January doubled from 310 to 626 (See Chart 2). The accused population also increased during January (See Chart 5).
- OPM expects the inmate population to range from between 18,000 to 18,500 inmates during the remainder of 2010.
- In December 2009, Acting DOC Commissioner Brian Murphy recommended closing Webster Correctional Institution in Cheshire to Gov. Rell. On January 14, the DOC transferred the last inmates out of Webster closing the 400-bed, Level 2, minimum security facility at midnight. Shutting Webster is expected to produce \$3.4 million in annual savings without significantly impacting public safety.

CJPPD published two reports this month: 2010 Correctional Population Forecast Report and 2010 Recidivism Report. Both are available on CJPPD's website listed by the masthead of this report.

Six Month Prison Population Forecast

CJPPD recently published its annual forecast of the prison population for 2010. According to these new estimates, the prison population should fluctuate between 18,000 and 18,500 over the next 12 months.

CJPPD does not consider this estimate to be overly aggressive given the dramatic decline in inmate numbers witnessed over the last 18 months. Assuming the forecast proves accurate, the prison population, measured from January 2010 to January 2011 is expected to decline by approximately 2%.

CJPPD's current estimate is based on several factors. The rate of decline in the prison system should slow since, over the past year, the volume of prison releases had been augmented due to a backlog of offenders whose prison releases had been delayed. In addition, improved coordination between DOC and the Board of Pardons and Parole should result in the transfer of more offenders into the jurisdiction of community supervision programs.

TABLE 1 –Prison Population Forecast

	Actual (*Avg Daily)	OPM 2010 Forecast
FEB '10	18,414*	-
MAR	-	18,332
APR	-	18,281
MAY	-	18,161
JUN	-	18,156
JUL	-	18,155
AUG	-	18,180
SEP	-	18,323
OCT	-	18,411
NOV	-	18,305
DEC	-	18,129
JAN '11	-	17,738
FEB	-	18,009

* Average Daily Count, first week of month

CHART 1 – Total DOC Facility Population, Actual and Projected
January 1, 2008 through March 1, 2010

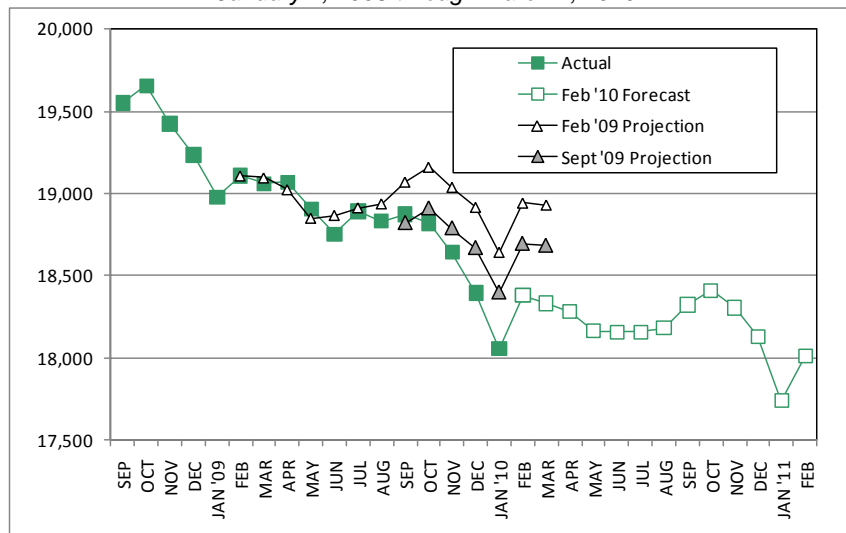
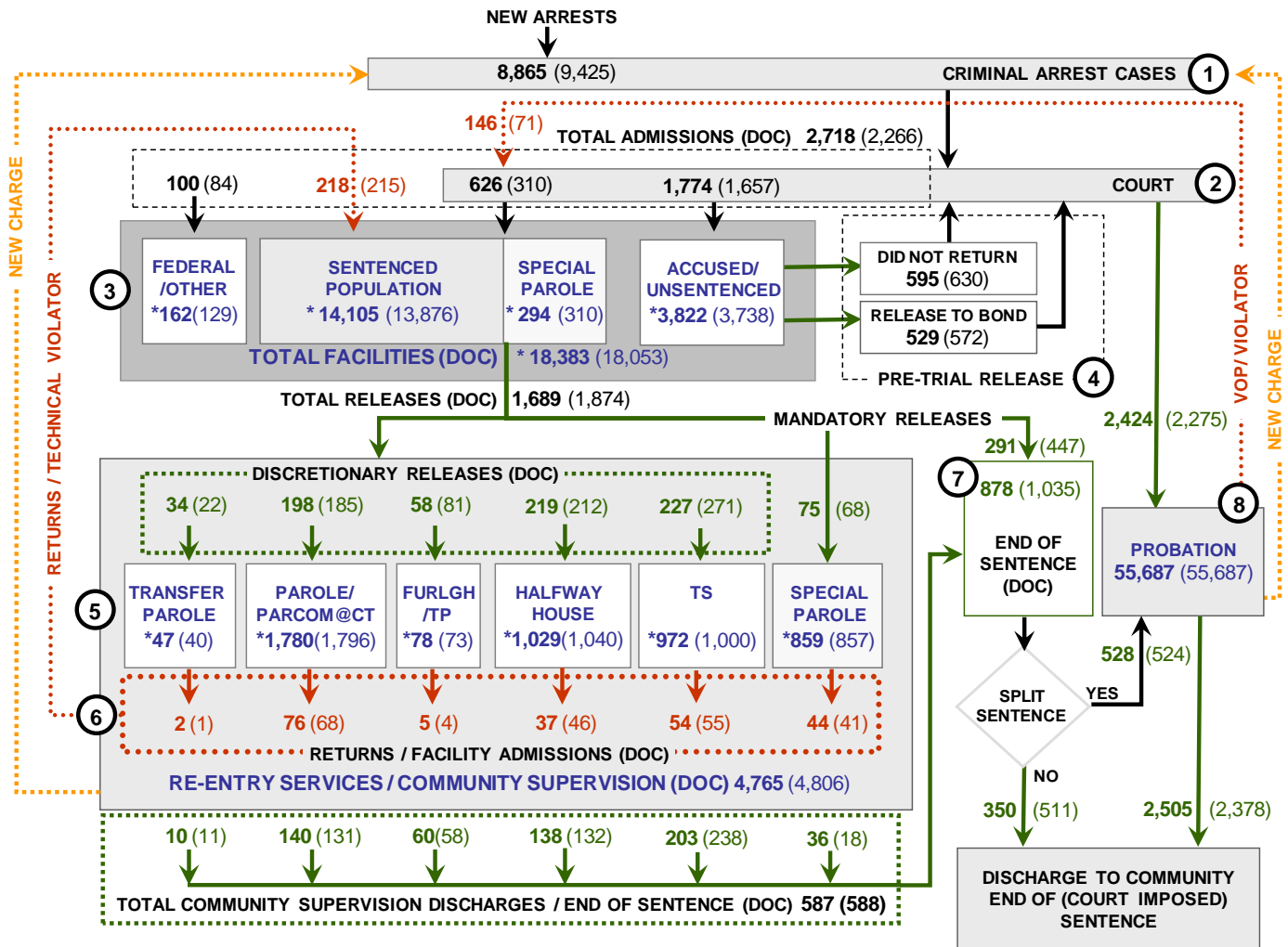


CHART 2 – Connecticut Criminal Justice System – Monthly Overview



Asterisks (*) indicate the single-day population count on February 1, 2010.
 Numbers enclosed by parentheses contain the figure for the previous month.
 Data shown for New Split Sentence Probationer is only approximate due to processing difficulties.
 Sources: Arrest-Judicial/Court Operations; Court-Judicial/CSSD; Facility/Community Supervision-DOC

Unlike states that have county governments, the majority of agencies within Connecticut's criminal justice system are State agencies. The one exception is law enforcement, where there are over 90 local police departments and the Connecticut State Police.

- 1) Arrest:** An individual enters into the criminal justice system at the time of arrest.
- 2) Court:** During arraignment, judges review the charges filed against the accused and set a bail amount. Individuals who cannot meet the conditions of bail are placed in DOC facilities to await trial. If the defendant is convicted they may be sentenced to serve a period of probation, a term of incarceration or some other sanction.
- 3) DOC Facilities:** Total facility population at DOC contains the unsentenced population, which is awaiting trial, the sentenced population, inmates on special parole, and individuals charged in federal cases or non-state cases.
- 4) Pre-Trial Release:** Some defendants who are incarcerated pending the disposition of their cases may be eligible for a bond reduction or placement into pre-trial diversionary programs or treatment programs. These programs feature close coordination and cooperation between DOC, CSSD and the Department of Mental Health and Addiction Services (DMHAS).
- 5) Re-Entry Services:** Depending on several factors, an inmate may be eligible to complete a portion of his/her prison sentences under supervision of the DOC's Parole and Community Services Unit. Non-violent Inmates with sentences shorter than two years are eligible for Transitional Supervision after serving 50% of their sentences. Inmates serving sentences longer than two years may be eligible for parole.
- 6) Returns:** Offenders who violate the conditions of their community release may be returned to prison to serve out the remainder of their sentences.
- 7) End of Sentence:** At the end of their sentences some offenders are required to complete a period of post-release supervision. Split-sentence offenders enter probation where they are monitored by CSSD personnel. Offenders sentenced to special parole remain under DOC supervision.
- 8) Violation of Probation:** If an individual violates the terms of their probation, an arrest warrant is issued and the violator is returned to court.

TABLE 2 –DOC Population Counts, First of the Month

	2009	2009	2010	2009	% Change	
	Dec. 1st	Jan. 1st	Feb. 1st	Feb. 1st	Monthly	Annual
DOC Facility						
Federal/Other	124	129	162	130	20.4%	24.6%
Sentenced	14,126	13,876	14,105	14,941	1.6%	-5.6%
Special Parole	313	310	294	278	-5.4%	5.8%
Accused/Unsentenced	3,832	3,738	3,822	3,758	2.2%	1.7%
Total	18,395	18,053	18,383	19,107	1.8%	-3.8%
DOC Community						
Transfer Parole	49	40	47	42	14.9%	11.9%
Parole/ Parcom Total	1,787	1,796	1,780	1,395	-0.9%	27.6%
Parole	1,625	1,642	1,637	1,232	-0.3%	32.9%
Parcom @ CT	162	154	143	163	-7.7%	-12.3%
Furlgh/Trans Place Total	53	73	78	23	6.4%	239.1%
Furlough	24	50	54	0	-	-
Trans Placement	29	23	24	23	4.2%	4.3%
Halfway House Total	1,049	1,040	1,029	1,238	-1.1%	-16.9%
Comm Release	885	882	873	924	-1.0%	-5.5%
TS	41	31	20	161	-55.0%	-87.6%
Parole	72	64	69	78	7.2%	-11.5%
Transfer Placement	0	0	0	0	-	-
Special Parole	51	63	67	75	6.0%	-10.7%
TS Total	1,002	1,000	972	893	-2.9%	8.8%
Special Parole	846	857	859	777	0.2%	10.6%
Total	4,786	4,806	4,765	4,368	-0.9%	9.1%

TABLE 3 – DOC Admissions and Releases, Monthly Totals

	2009	2009	2010	2009	% Change	
	Nov.	Dec.	Jan.	Jan.	Monthly	Annual
Admissions						
Federal/Other	73	84	100	102	19.0%	-2.0%
Returns	203	215	218	187	1.4%	16.6%
Transfer Parole	0	1	2	2	100.0%	-
Parole	55	68	76	53	11.8%	43.4%
Trans Plac/Furlough	3	4	5	1	25.0%	-
HWH	27	46	37	33	-19.6%	12.1%
TS	71	55	54	71	-1.8%	-23.9%
Special Parole	47	41	44	27	7.3%	63.0%
New Sentence	386	310	626	722	101.9%	-13.3%
VOP	83	71	146	203	105.6%	-28.1%
Accused	1,659	1,657	1,774	1,710	7.1%	3.7%
Total	2,321	2,266	2,718	2,721	19.9%	-0.1%
Releases						
Transfer Parole	36	22	34	22	54.5%	54.5%
Parole	225	185	198	153	7.0%	29.4%
Trans Plac/Furlough	46	81	58	7	-28.4%	728.6%
HWH	193	212	219	166	3.3%	31.9%
TS	262	271	227	311	-16.2%	-27.0%
Special Parole	75	68	75	77	10.3%	-2.6%
End of Sentence	938	1,035	878	1,020	-15.2%	-13.9%
Total	1,775	1,874	1,689	1,756	-9.9%	-3.8%
Pre-trial Releases*						
Did not return from Court	636	630	595	645	-5.6%	-7.8%
Release to Bond	543	572	529	528	-7.5%	0.2%

*Measured by occurrence, not by individual.

Parole

Paroles Granted During December: 143

The Board considered 209 parole cases at full panel hearings during January. In 143 cases, offenders were granted parole dates; in 67 cases, parole was denied. In addition there were 91 parole violation hearings, resulting in 68 re-paroles (44 revocations and 24 rescissions).

TABLE 4A –Paroles Granted, January 2010

	Hearings	Granted	Rate
NOV	279	215	77%
DEC	281	218	78%
JAN 2010	209	143	68%

Data Notes: Figures are based on the data available at the time of this report. Data in subsequent issues may not agree.

Parole hearings are typically scheduled six months prior to an offender's parole eligibility date. An offender may be released to parole on their first eligibility date or a later time. As a result, the time between parole being granted and the offender being released to parole may take longer than six months.

Transfer Parole Approval Rate: 18%.

Although transfer parole grant rates have remained relatively stable, the number of offenders considered for transfer parole has increased considerably in recent months. The decline in January 2010 numbers is considered to be anomalous and temporary.

TABLE 4B –Transfer Paroles, January 2009

	Reviewed	Granted	Denied	Continued	Rate
NOV	256	58	123	75	23%
DEC	299	53	163	83	18%
JAN '10	180	32	81	67	18%

Probation

Total Court Support Services Division caseload for December 2009: 55,687

TABLE 5 – Monthly CSSD Direct Sentenced & Probationer Community Placements

	Community Based	Out-patient	Inpatient/Resident	Total
OCT**	1,449	967	12	2,428
NOV	1,522	765	6	2,293
DEC	1,458	1,026	32	2,516

** October figures have been adjusted by CSSD since last month's Indicators Report

Data Notes: Figures are based on the latest data available at publication time. Figures in subsequent issues may not agree with those published here.

Pre-trial Diversion and Supervision

TABLE 6 – Pre-trial Diversion & Supervision

	Pre-trial Bail Case Starts	Client Supv. Starts
NOV	2,426	2,294
DEC	2,463	2,275
JAN '10	2,600	2,424

CHART 3 – Snapshot Daily DOC Facility Population
February 1, 2010 to February 7, 2010

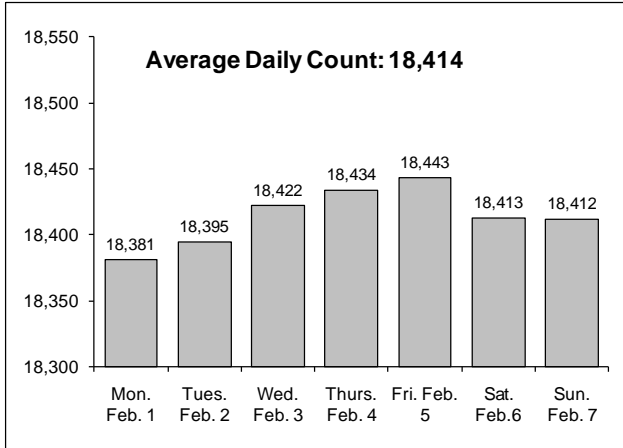


CHART 6 – Monthly DOC Admissions by Type
February 2009 to January 2010

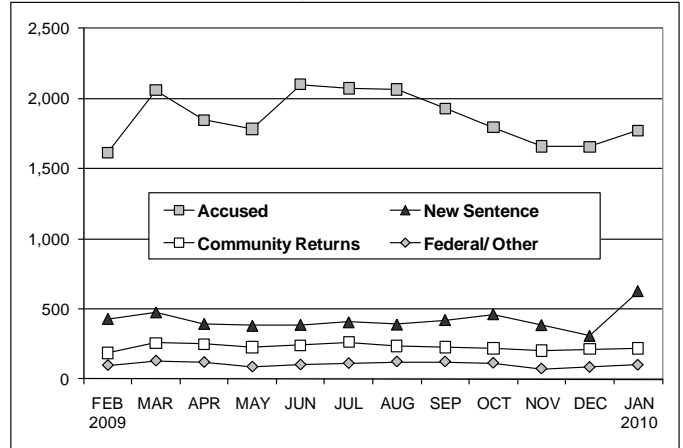


CHART 4 –Monthly Prison Population
January 1 through December 1, Calendar Year

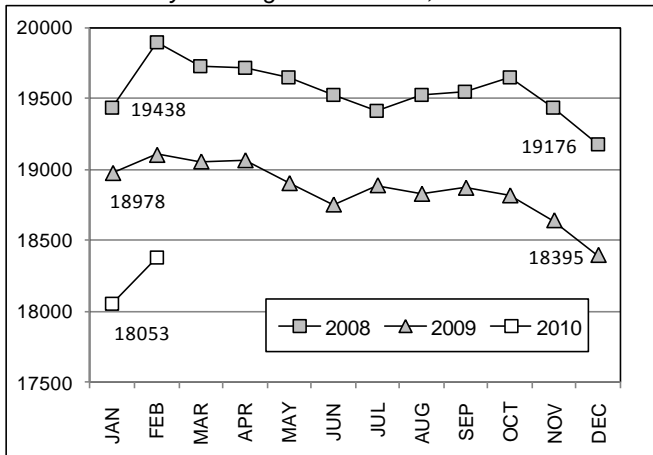


CHART 7 –Readmissions from Community Release
January 2010

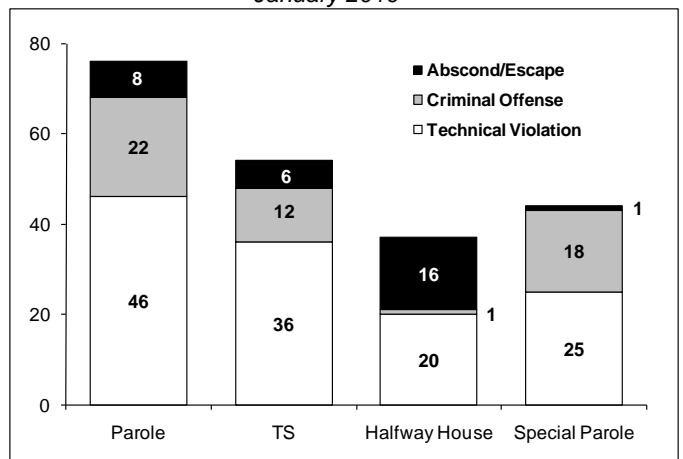


CHART 5 – Net increase in inmates
January 1, 2010 to January 31, 2010

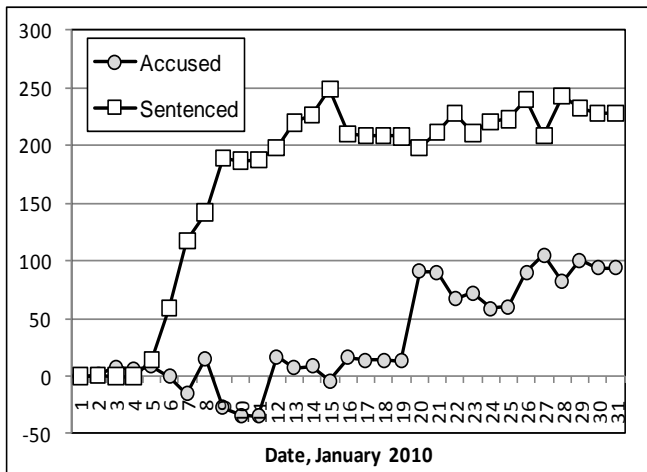
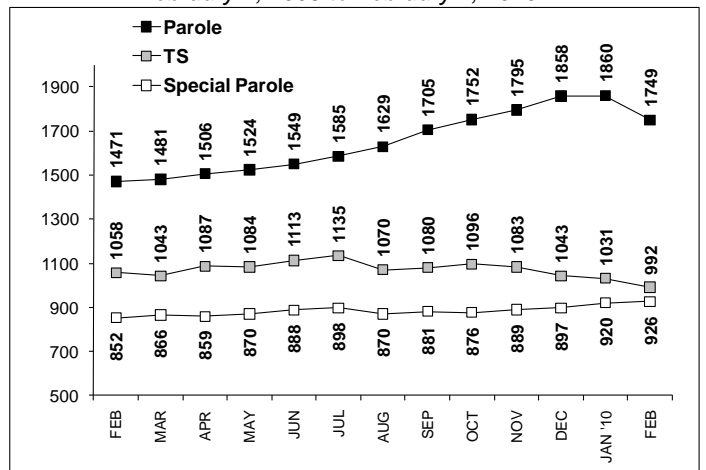


CHART 8 –Parole, TS and Special Parole, supervised cases
February 1, 2009 to February 1, 2010



* Data for charts 3 through 8 were provided by CT DOC
**Data in Chart 8 include all offenders under parole jurisdiction

Supplementary tables (1) – 2009 data

Monthly admits to DOC facilities in 2009

	Returns/			Total Accused	Total Admissions
	Federal/ Other	Comm. Supv.	New Sentence		
JAN	102	187	722	1,710	2,721
FEB	98	186	430	1,612	2,326
MAR	130	258	476	2,061	2,925
APR	120	249	395	1,848	2,612
MAY	87	228	381	1,783	2,479
JUN	102	241	388	2,102	2,833
JUL	112	263	406	2,073	2,854
AUG	124	236	390	2,066	2,816
SEP	124	229	422	1,931	2,706
OCT	114	220	463	1,796	2,593
NOV	73	203	386	1,659	2,321
DEC	84	215	310	1,657	2,266
Total	1,270	2,715	5,169	22,298	31,452

Total monthly discharges in 2009

	Discharges from Comm Supv	End of Sentence discharges	Total Discharges
JAN	527	493	1,020
FEB	464	429	893
MAR	521	506	1,027
APR	535	473	1,008
MAY	446	549	995
JUN	521	431	952
JUL	554	501	1,055
AUG	438	388	826
SEP	499	447	946
OCT	521	534	1,055
NOV	494	444	938
DEC	588	447	1,035
Total	6,108	5,642	11,750

Monthly returns from DOC Community Supervision Programs in 2009

	Halfway		TS	Special		Total
	Parole	House		Parole	Other**	
JAN	53	33	71	27	3	187
FEB	43	52	62	28	3	188
MAR	61	47	87	54	9	258
APR	60	46	96	42	5	249
MAY	63	37	72	49	7	228
JUN	62	54	69	52	4	241
JUL	71	40	79	69	4	263
AUG	75	38	86	36	1	236
SEP	76	35	72	45	1	229
OCT	59	36	80	41	4	220
NOV	55	27	71	47	3	203
DEC	68	46	55	41	5	215
Total	746	491	900	531	49	2,717

**Other: transfer parole, furlough and transitional placement

Inmate population, first of month, 2009

	Sentenced inmates	Accused inmates	Special Parole	Federal/ Other	Total Facility
JAN	14,745	3,788	310	135	18,978
FEB	14,941	3,758	278	130	19,107
MAR	15,032	3,612	275	141	19,069
APR	14,914	3,738	279	138	19,069
MAY	14,828	3,654	278	146	18,906
JUNE	14,640	3,688	264	162	18,754
JULY	14,598	3,858	273	162	18,891
AUG	14,486	3,870	314	160	18,830
SEP	14,441	3,969	303	161	18,874
OCT	14,366	3,998	302	153	18,819
NOV	14,279	3,915	307	141	18,642
DEC	14,126	3,832	313	124	18,395

Discharges from DOC Community Supervision Programs. in 2009

	Parole	Halfway House	TS	Special Parole	Other**
JAN	99	118	260	40	10
FEB	97	89	227	29	22
MAR	119	124	234	29	15
APR	121	109	252	35	18
MAY	91	78	251	15	11
JUN	105	99	278	26	13
JUL	119	122	263	31	19
AUG	107	91	192	35	13
SEP	120	111	235	18	15
OCT	119	116	257	19	10
NOV	110	99	228	26	31
DEC	131	132	238	18	69
Total	1,338	1,288	2,915	321	246

**Other: transfer parole, furlough and transitional placement

Population in DOC Community Supervision Programs, first of month, 2009

	Parole*	Halfway House	TS	Special Parole	Other**
JAN	1,361	1,227	900	759	56
FEB	1,395	1,238	893	777	65
MAR	1,402	1,200	874	802	92
APR	1,427	1,202	928	803	103
MAY	1,447	1,208	927	812	114
JUNE	1,549	1,175	977	832	115
JULY	1,585	944	1,035	851	126
AUG	1,628	1,041	987	825	87
SEP	1,703	1,046	1,019	838	78
OCT	1,681	1,064	1,021	828	91
NOV	1,726	1,077	1,027	837	75
DEC	1,787	1,049	1,002	846	102

* Parole includes parole compact offenders

**Other: transfer parole, furlough and transitional placement

Supplementary tables (2) – 2009 data

Offenders in halfway houses, by jurisdiction, first of month, 2009

	Jurisdiction				Total	
	Community		TS	Parole		Special Parole
	Release	DOC				
JAN	927	165	79	56	1,227	
FEB	924	161	78	75	1,238	
MAR	888	169	77	64	1,198	
APR	908	159	79	56	1,202	
MAY	918	155	77	58	1,208	
JUNE	912	136	70	56	1,174	
JULY	796	100	50	47	993	
AUG	858	83	55	45	1,041	
SEP	875	71	57	43	1,046	
OCT	869	75	71	49	1,064	
NOV	899	56	70	52	1,077	
DEC	885	41	72	51	1,049	

CSSD, Community Placements in 2009

	Community-Based		Inpatient/Residential	Total
	Based	Outpatient		
JAN	1,046	843	35	1,924
FEB	939	839	18	1,796
MAR	1,086	959	48	2,093
APR	1,216	991	48	2,255
MAY	1,136	770	43	1,949
JUNE	1,261	855	39	2,155
JULY	1,277	789	34	2,100
AUG	1,334	934	24	2,292
SEP*	1,297	1,041	20	2,358
OCT	1,449	967	12	2,428
NOV	1,522	765	6	2,293
DEC	1,458	1,026	32	2,516

Total population under Judicial or DOC supervision in 2009

	Prison population	Community Supervision, DOC	Total DOC supervised population	Adult Probation, CSSD	Total State supervised population
JAN	18,978	4,303	23,281	56,293	79,574
FEB	19,107	4,368	23,475	56,880	80,355
MAR	19,060	4,370	23,430	56,875	80,305
APR	19,069	4,463	23,532	56,774	80,306
MAY	18,906	4,508	23,414	56,665	80,079
JUNE	18,754	4,648	23,402	56,771	80,173
JULY	18,891	4,541	23,432	56,775	80,207
AUG	18,830	4,568	23,398	56,797	80,195
SEP*	18,874	4,684	23,558	55,410	78,968
OCT	18,819	4,685	23,504	55,418	78,922
NOV	18,642	4,742	23,384	55,863	79,247
DEC	18,395	4,786	23,181	55,687	78,868

* CSSD altered its counting methods in Sept. 2009

Arrests and pre-trial releases in 2009

	Pre-trial releases from prison		Criminal Arrests
	Release to Bond	Did not return from Court	
JAN	528	645	8,747
FEB	508	595	8,682
MAR	617	677	11,055
APR	563	728	10,296
MAY	579	612	10,548
JUN	667	669	11,712
JUL	655	772	11,547
AUG	667	717	11,107
SEP	641	677	11,095
OCT	606	653	10,338
NOV	543	636	9,697
DEC	572	630	9,425
Total	7,146	8,011	124,249

Monthly releases to DOC Community Supervision Programs in 2009

	Transfer Parole	Parole	Furlough	Trans Plac	Halfway House	TS	Special Parole	Total
JAN	22	153	0	7	166	311	77	736
FEB	23	120	0	14	157	270	50	634
MAR	21	183	0	12	227	360	64	867
APR	16	178	0	18	200	338	74	824
MAY	16	171	0	9	184	338	78	796
JUN	25	179	0	15	118	354	76	767
JUL	19	176	0	9	229	282	70	785
AUG	29	218	0	10	191	312	55	815
SEP	47	238	0	16	197	311	60	869
OCT	25	211	0	4	217	326	69	852
NOV	36	225	37	9	193	262	75	837
DEC	22	185	75	6	212	271	68	839
Total	301	2237	112	129	2291	3735	816	9,621