



# Criminal Justice Policy & Planning Division

## Monthly Indicators Report

RESEARCH, ANALYSIS & EVALUATION — WWW.CT.GOV/OPM/CriminalJustice/Research

### Highlights

- On June 1, 2009, 18,754 inmates were incarcerated in DOC facilities. A year earlier, on June 1, 2008, 19,656 inmates were incarcerated in State prison facilities. June is the fifth consecutive month in which the prison population has declined.
- The number of sentenced inmates declined by 188 between May 1<sup>st</sup> and June 1<sup>st</sup>. During the same period, the accused population rose by 34 (See Table 2).
- Although 28 fewer offenders were released into discretionary re-entry programs during May, the total offender population that was under DOC supervision in the community increased from 4,510 to 4,577 (see Chart 2).
- The accused prison population generally increases each year as the warmer weather progresses. This month's decline in the prison population follows a drop in the number of unsentenced offenders who were admitted to State prison facilities during May. This decline occurred despite a slight up tick in the number of statewide criminal arrests during the month.
- During May 2009, the Board of Pardons and Parole heard 349 parole cases; 299 offenders, or 86%, were granted parole and assigned a parole-release date. In May 2008, the Board held full-panel parole hearings for 69 cases. Another 277 cases received administrative reviews.

### Six Month Prison Population Forecast

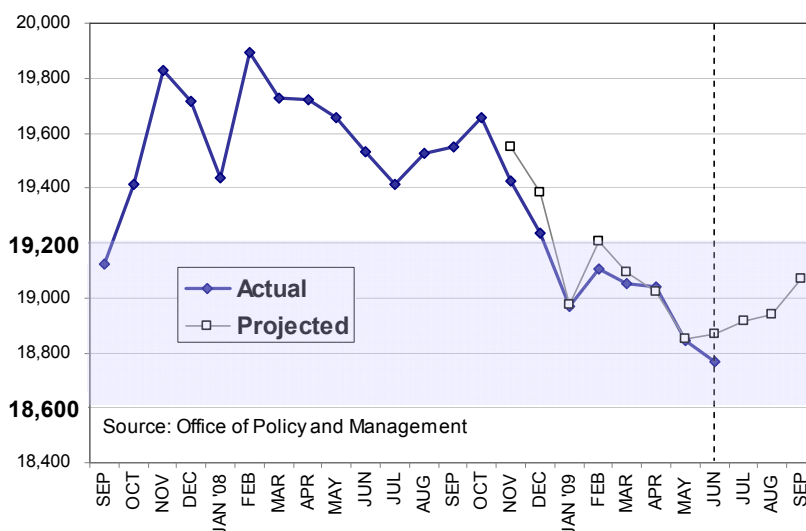
The average prison population during the first seven days of June was lower, by 101 prisoners, than the figure projected in CJPPD's 6-month population forecast that was published in February. The June population figure, 18,765 inmates, is the lowest since August 2006.

TABLE 1 – 6-Month Prison Population Forecast

	2009 Actual (*Avg Daily)	6 Month Population Forecast	Difference Actual vs. Projected	% Diff
MAR	19,053*	19,095	-42	-0.2%
APR	19,040*	19,023	17	0.1%
MAY	18,845*	18,849	-4	0.0%
JUN	18,765*	18,866	-101	-0.5%
JUL	-	18,913	-	-
AUG	-	18,937	-	-
SEP	-	19,070	-	-

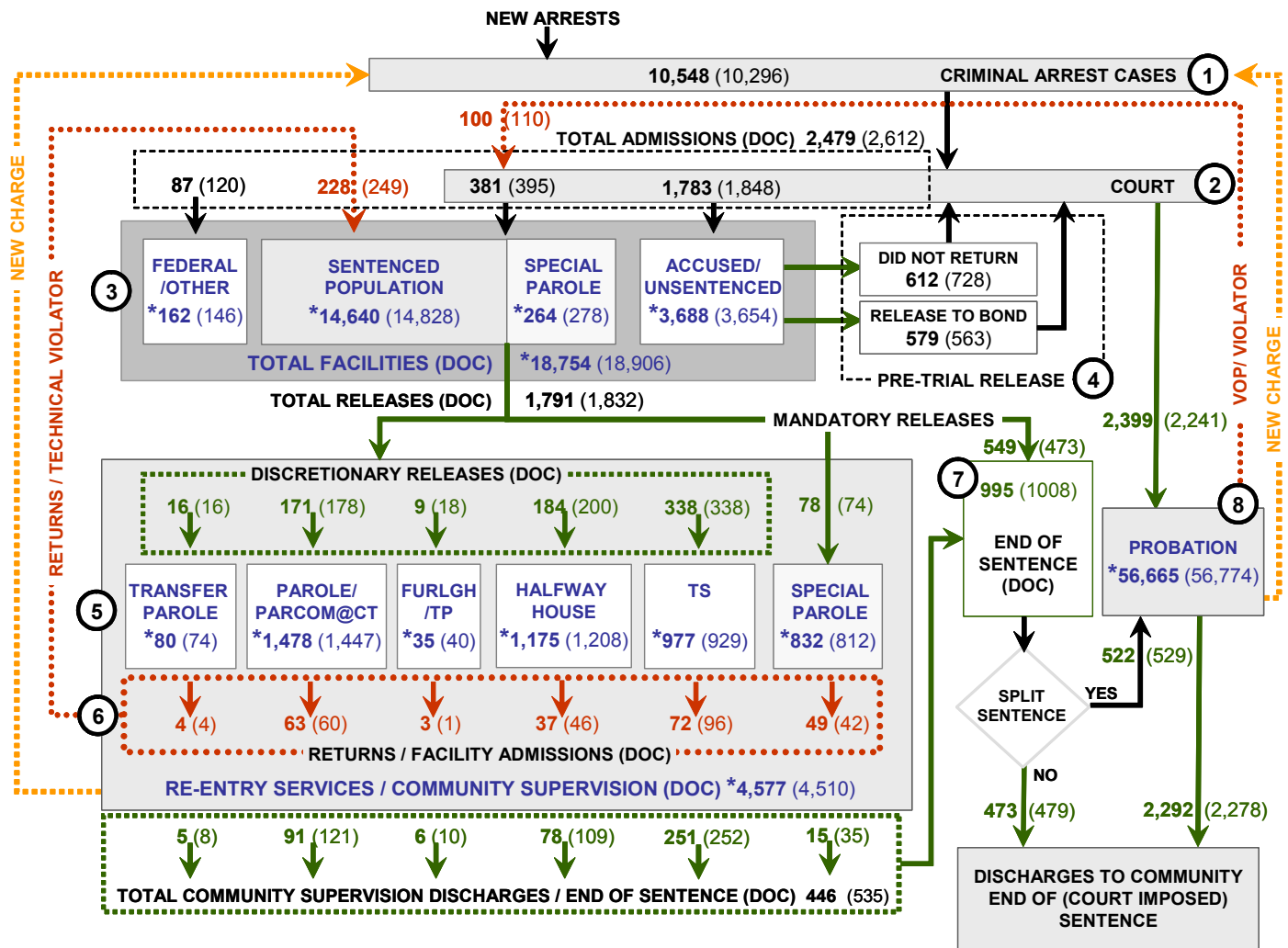
DOC data (See Table 3) indicates that admissions to DOC facilities were 3.5% lower in May than in April. Compared with May 2008, the number of accused offenders admitted to DOC facilities was down 10.6% during May.

CHART 1 – Total DOC Facility Population, Actual and Projected  
September 1, 2007 to September 1, 2009



Commissioner Theresa Lantz will be leaving the Department of Correction at the end of June along with several members of her senior executive staff. Considering the State's fiscal outlook, any incoming DOC administration will surely face a multitude of difficult challenges. Fortunately, prison overcrowding will not be an immediate concern. Thanks to the exiting administration, the State's prison population over the last 15 months has fallen by over 1,000 inmates and community re-entry programs have been reviewed and enhanced. Frederick Levesque, Director of Offender Classification and Population Management, will also be retiring from DOC. As a member of the CJPAC Research Workgroup, we have benefited greatly from his knowledge and significant contributions to our collaborative work products. Our best wishes to Commissioner Lantz and Frederick Levesque in their new endeavors.

## CHART 2 – Connecticut Criminal Justice System Overview



Asterisks (\*) indicate single-day, snapshots of population count on June 1, 2009. Numbers enclosed by parentheses contain figures for the previous month. Data shown for New Split Sentence Probationer is only approximate due to processing difficulties. Sources: Arrest-Judicial/Court Operations; Court-Judicial/CSSD; Facility/Community Supervision-DOC

Unlike states that have county governments, the majority of agencies within Connecticut's criminal justice system are State agencies. The one exception is law enforcement, where there are over 90 local police departments and the Connecticut State Police.

- 1) Arrest:** An individual enters into the criminal justice system at the time of arrest.
- 2) Court:** During arraignment, judges review the charges filed against the accused and set a bail amount. Individuals who cannot meet the conditions of bail are placed in DOC facilities to await trial. If the defendant is convicted they may be sentenced to serve a period of probation, a term of incarceration or some other sanction.
- 3) DOC Facilities:** Total facility population at DOC contains the unsentenced population, which is awaiting trial, the sentenced population, inmates on special parole, and individuals charged in federal cases or non-state cases.
- 4) Pre-Trial Release:** Some defendants who are incarcerated pending the disposition of their cases may be eligible for a bond reduction or placement into pre-trial diversionary programs or treatment programs. These programs feature close coordination and cooperation between DOC, CSSD and the Department of Mental Health and Addiction Services (DMHAS).
- 5) Re-Entry Services:** Depending on several factors, an inmate may be eligible to complete a portion of his/her prison sentences under supervision of the DOC's Parole and Community Services Unit. Non-violent Inmates with sentences shorter than two years are eligible for Transitional Supervision after serving 50% of their sentences. Inmates serving sentences longer than two years may be eligible for parole.
- 6) Returns:** Offenders who violate the conditions of their community release may be returned to prison to serve out the remainder of their sentences.
- 7) End of Sentence:** At the end of their sentences some offenders are required to complete a period of post-release supervision. Split-sentence offenders enter probation where they are monitored by CSSD personnel. Offenders sentenced to special parole remain under DOC supervision.
- 8) Violation of Probation:** If an individual violates the terms of their probation, an arrest warrant is issued and the violator is returned to court.

TABLE 2 – Snapshot of Month DOC Population Counts

	2009			2008	% Change	
	Apr 1st	May 1st	June 1st	June 1st	Monthly	Annual
<b>DOC Facility</b>						
Federal/Other	138	146	162	189	11.0%	-14.3%
Sentenced	14,914	14,828	14,640	15,209	-1.3%	-3.7%
Special Parole	279	278	264	348	-5.0%	-24.1%
Accused/Unsentenced	3,738	3,654	3,688	3,786	0.9%	-2.6%
<b>Total</b>	<b>19,069</b>	<b>18,906</b>	<b>18,754</b>	<b>19,532</b>	<b>-0.8%</b>	<b>-4.0%</b>
<b>DOC Community</b>						
Transfer Parole	70	74	80	37	8.1%	116.2%
Parole/ Parcom Total	1,427	1,447	1,478	1,319	2.1%	12.1%
Parole	1,273	1,286	1,314	1,163	2.2%	13.0%
Parcom @ CT	154	161	164	156	1.9%	5.1%
Furlgh/Trans Place Total	33	40	35	0	-12.5%	
Furlough	0	0	0	0		
Trans Placement	33	40	35	0	-12.5%	
Halfway House Total	1,202	1,208	1,175	1,200	-2.7%	-2.1%
Comm Release	908	918	912	912	-0.7%	0.0%
TS	159	155	136	172	-12.3%	-20.9%
Parole	79	77	71	60	-7.8%	18.3%
Transfer Parole	0	0	0	4		
Special Parole	56	58	56	52	-3.4%	7.7%
TS Total	928	929	977	1,008	5.2%	-3.1%
Special Parole	803	812	832	702	2.5%	18.5%
<b>Total</b>	<b>4,463</b>	<b>4,510</b>	<b>4,577</b>	<b>4,266</b>	<b>1.5%</b>	<b>7.3%</b>

TABLE 3 – Total DOC Admissions and Releases by Month

	2009			2008	% Change	
	Mar	Apr	May	May	Monthly	Annual
<b>Admissions</b>						
Federal/Other	130	120	87	134	-27.5%	-35.1%
Returns	258	249	228	259	-8.4%	-12.0%
Transfer Parole	2	4	4	3	0.0%	-
Parole	61	60	63	55	5.0%	14.5%
Trans Plac/Furlough	7	1	3	-		
HWH	47	46	37	51	-19.6%	-27.5%
TS	87	96	72	108	-25.0%	-33.3%
Special Parole	54	42	49	41	16.7%	19.5%
New Sentence	476	395	381	429	-3.5%	-11.2%
VOP	138	110	100	105	-9.1%	-4.8%
Accused	2,061	1,848	1,783	1,994	-3.5%	-10.6%
<b>Total</b>	<b>2,925</b>	<b>2,612</b>	<b>2,479</b>	<b>2,816</b>	<b>-5.1%</b>	<b>-12.0%</b>
<b>Releases</b>						
Transfer Parole	21	16	16	6	0.0%	166.7%
Parole	183	178	171	109	-3.9%	56.9%
Trans Plac/Furlough	12	18	9	-	-50.0%	
HWH	227	200	184	218	-8.0%	-15.6%
TS	360	338	338	376	0.0%	-10.1%
Special Parole	64	74	78	50	5.4%	56.0%
End of Sentence	1,027	1,008	995	1,097	-1.3%	-9.3%
<b>Total</b>	<b>1,894</b>	<b>1,832</b>	<b>1,791</b>	<b>1,856</b>	<b>-2.2%</b>	<b>-3.5%</b>
<b>Pre-trial Releases*</b>						
Release to Bond	617	563	579	-	-6.2%	-
Did not return from Court	677	728	612	-	-9.6%	-

\*Measured by occurrence, not by individual.

**Parole**

**Paroles Granted During May 2009:**

During May, the Board conducted 24 full-panel hearings where they considered 347 cases. 299 offenders were granted parole dates and 48 cases were denied or continued. In addition, hearings were conducted for 57 cases involving parole revocations or rescissions. Of these, 44 cases were granted re-parole.

TABLE 4A – Monthly Parole Granting Rate

	Hearings	Granted	Rate
MAR	287	262	91%
APR	344	296	86%
MAY	347	299	86%

Data Notes: Figures are based on actual data available at the time of this report. Subsequent reports may not agree.

Parole hearings are typically held six months prior to an offender's parole eligibility date. An offender may be released to parole on their first eligibility date or a later time. As a result, the time between parole being granted and the offender being released to parole may take longer than six months.

**Transfer Parole Rates:** In May, 270 cases were reviewed for transfer parole. Of these cases 59 were approved, 155 were denied, and 56 received continuances.

TABLE 4B – Monthly Transfer Paroles Granted

	Reviewed	Granted	Denied	Continued	Rate
MAR	188	44	90	54	23%
APR	140	43	65	32	31%
MAY	270	59	155	56	22%

**Probation**

**Total number sentenced offenders placed on probation in May: 2,399 (See Chart 2).**

TABLE 5 – Monthly CSSD Direct Sentenced & Probationer Community Placements

	Community Based	Out-patient	Inpatient/ Resident	Total
FEB	939	839	18	1,796
MAR	1,086	959	48	2,093
APR	1,216	991	48	2,255

Data Notes: May 2009 data for Community Placements was not available at the time of this report. Figures are based on data available at the time of this report. Figures in subsequent reports may not agree with those published here.

**Pre-trial Diversion Supervision**

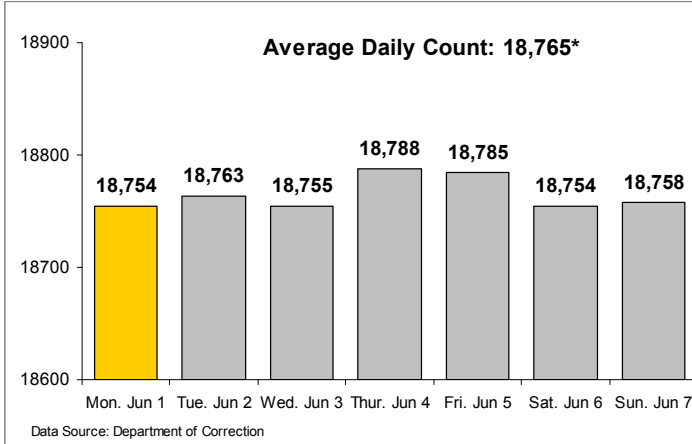
**Total number of offenders released to Pre-trial Diversion/Supervision in May: 2,706.**

This figure includes offenders who were released from DOC facilities.

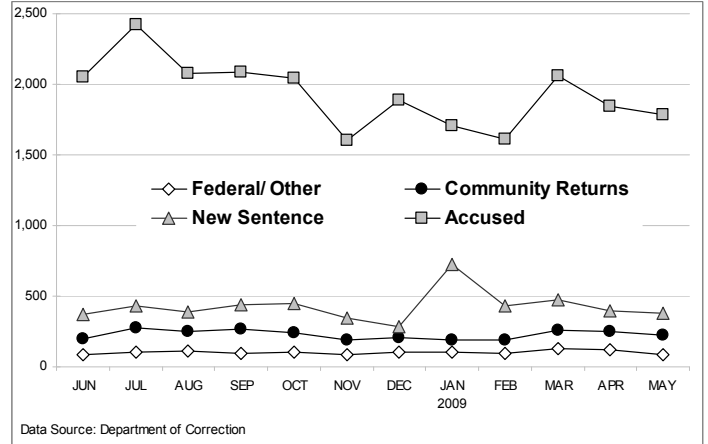
TABLE 6 – Pre-trial Diversion/Supervision

MAR	3,067
APR	2,819
MAY	2,706

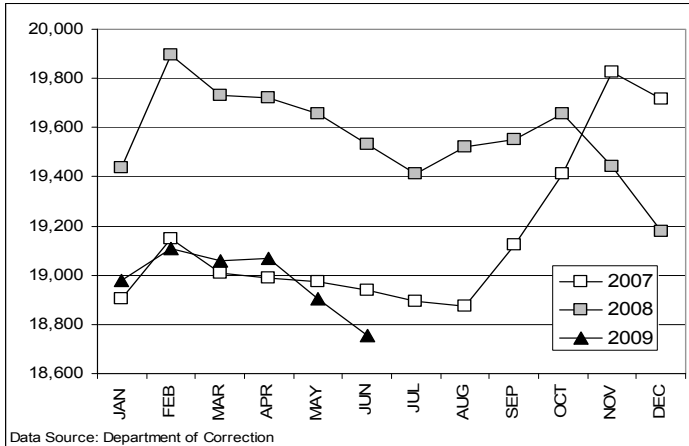
**CHART 3 – Snapshot Daily DOC Facility Population**  
June 1, 2009 to June 7, 2009



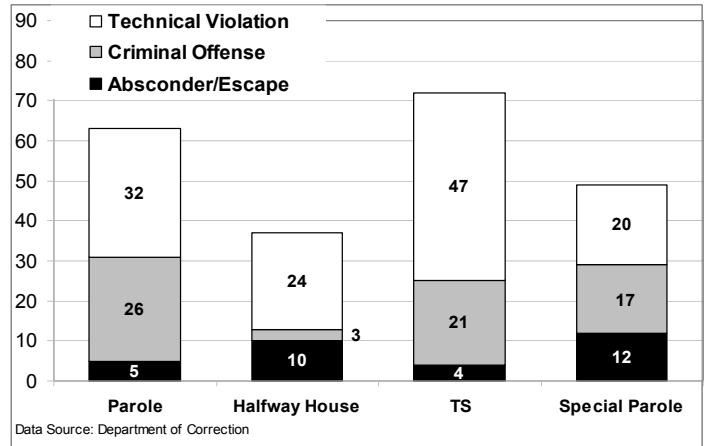
**CHART 6 – Monthly DOC Admissions by Type**  
June 2008 to May 2009



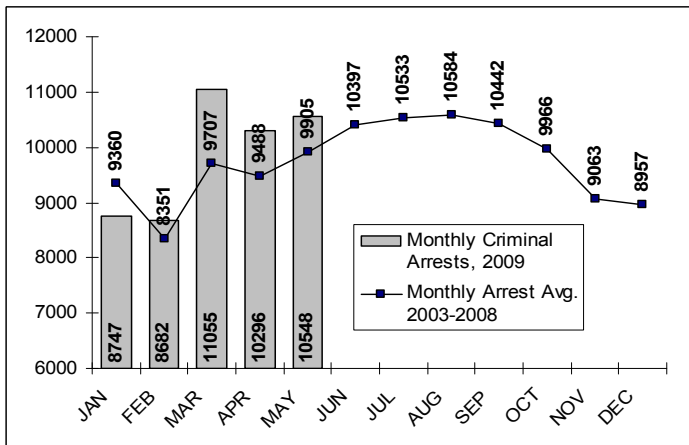
**CHART 4 – Snapshot Monthly DOC Prison Population**  
January through December (Calendar Year)



**CHART 7 – Community Release Readmission Reasons**  
May 2009



**CHART 5 – Statewide Criminal Arrests, Monthly totals in 2009 against the 6-year monthly average**  
Monthly, calendar year



**CHART 8 – Snapshot Monthly Parole, TS and Special Parole**  
October 1, 2007 to June 1, 2009

